

**Information note to the Press**  
**(Press Release No. 34/2009/QoS)**  
**Telecom Regulatory Authority of India**

**For Immediate Release**

Tel. No. : 011-23230404  
Fax : 011-23213036  
E-mail : [advqos@traf.gov.in](mailto:advqos@traf.gov.in)  
Website : [www.traf.gov.in](http://www.traf.gov.in)

**TRAI Releases Network/POIs congestion report of the Cellular Mobile Service Providers (CMSPs) for the months of October, November & December 2008**

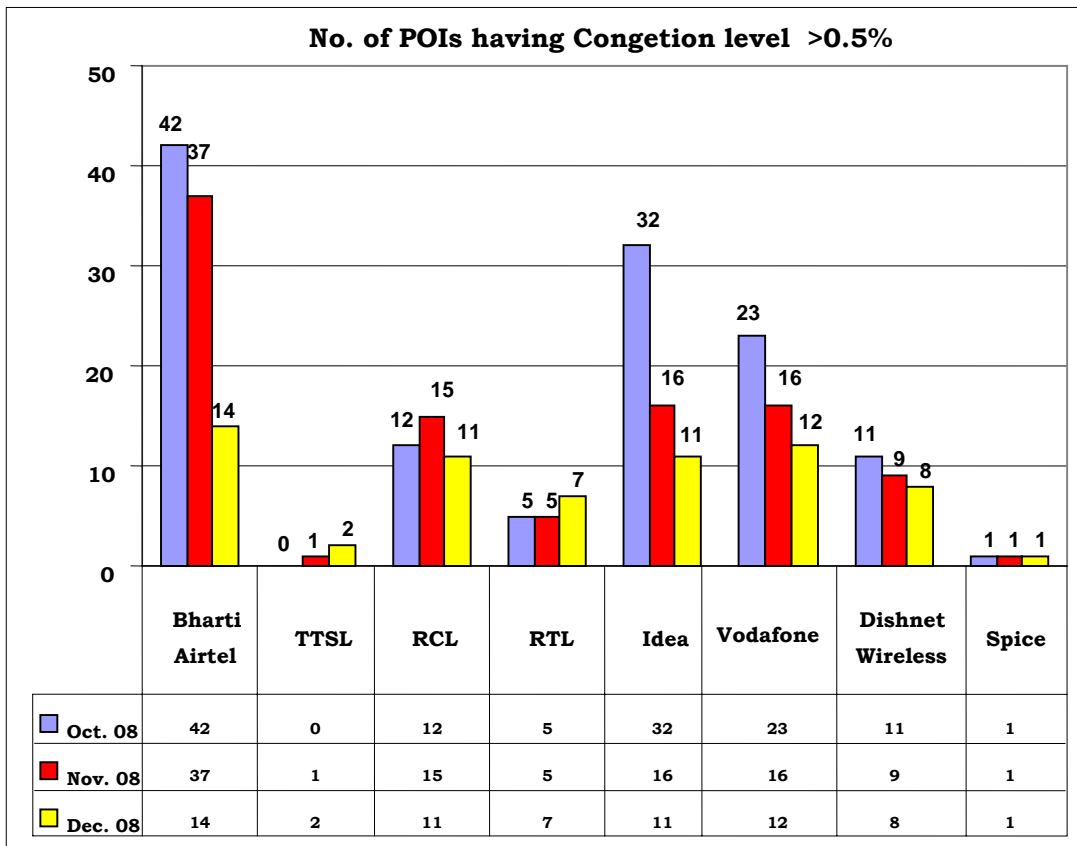
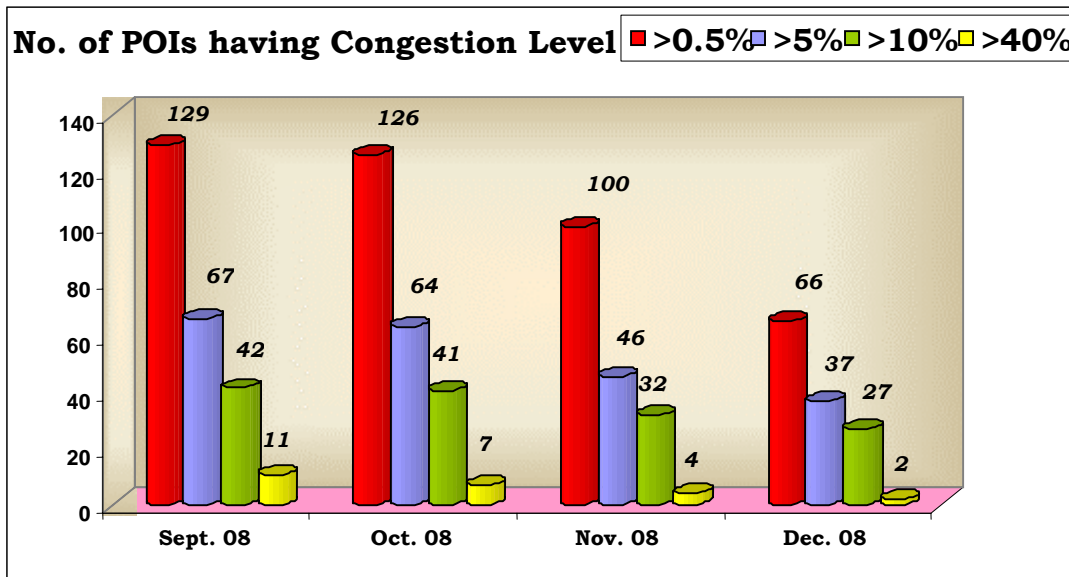
The growth of mobile network is taking place at a very rapid pace and about 10 million subscribers are added every month. In order to ensure seamless interconnection, TRAI has been monitoring the level of congestion at the Point of Interconnection (POI) between various service providers on a monthly basis. This parameter signifies the ease with which a customer of one network is able to communicate with a customer of another network. This parameter also reflects as to how effective is the interconnection between two networks. The benchmark notified by TRAI in the QoS Regulations for this parameter is <0.5%. This means out of 200 calls between two operators only one call should face congestion problem. The result of the monitoring reveals that in a number of areas, the degree of congestion between the operators is alarming. In a number of cities, the level of congestion between the networks of different operators is far more than this benchmark.

Cellular Mobile Service Providers have submitted their POIs Congestion Reports in TRAI for the months of October, November and December 2008.

- We have included only the Service Providers who do not meet the TRAI stipulated POI Congestion benchmark of <0.5% in any of their service areas.
- The POI Congestion Report analysis for the month of October, 2008 to December, 2008 shows that the performance of the CMSPs with respect to the congestion on POIs has improved in the month of December, 2008 as compared with the performance in September, 2008. During the period Cellular Mobile Telephone Subscriber base has increased from 315.31 million in September 2008 to 346.89 million in December 2008. The number of POIs having congestion has decreased from 129 in September, 2008 to 66 in December, 2008.
- Out of these 66 POIs in December, 2008, in 37 POIs, the level of congestion is more than 5% as compared to 67 POIs in September, 2008.
- The number of such POIs where the level of congestion is more than 10% is 27 in December, 2008, whereas it was 42 in the month of September, 2008.
- The number of worst affected POIs where congestion level is more than 40% is 2 in the month of December, 2008 whereas it was 11 in the month of September, 2008.
- In respect of POIs from Private CMSPs to BSNL/MTNL, the number of POIs having congestion has decreased from 68 in September, 2008 to 35 in the month of December, 2008.

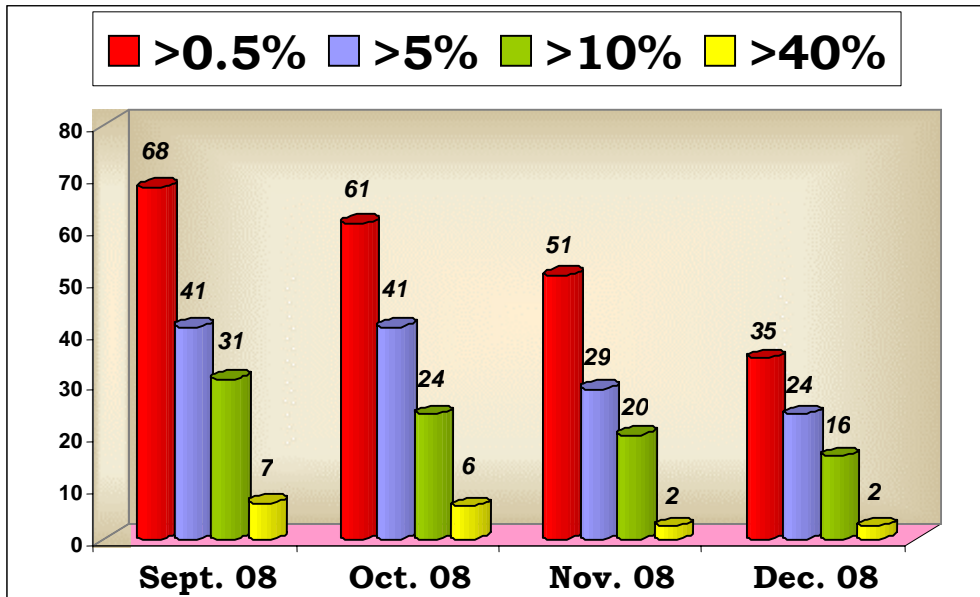
- During the same period POI congestion among Private CMSPs has also decreased from 61 in September, 2008 to 31 in December, 2008.
- Amongst the private service providers, Bharti Airtel has the largest number of POIs having Congestion (14 POIs as of December '08) followed by Vodafone 12 POIs as of December '08), Reliance Communications and Idea (11 POIs each as of December '08), Dishnet Wireless (8 POIs).
- The Circles/ States more affected due to POI congestion are Bihar (22 PoIs) followed by North East, Rajasthan, UP-E and UP-W (each having 5 no. of congested PoIs).

**The analysis of the degree of congestion in these POIs is given below:-**

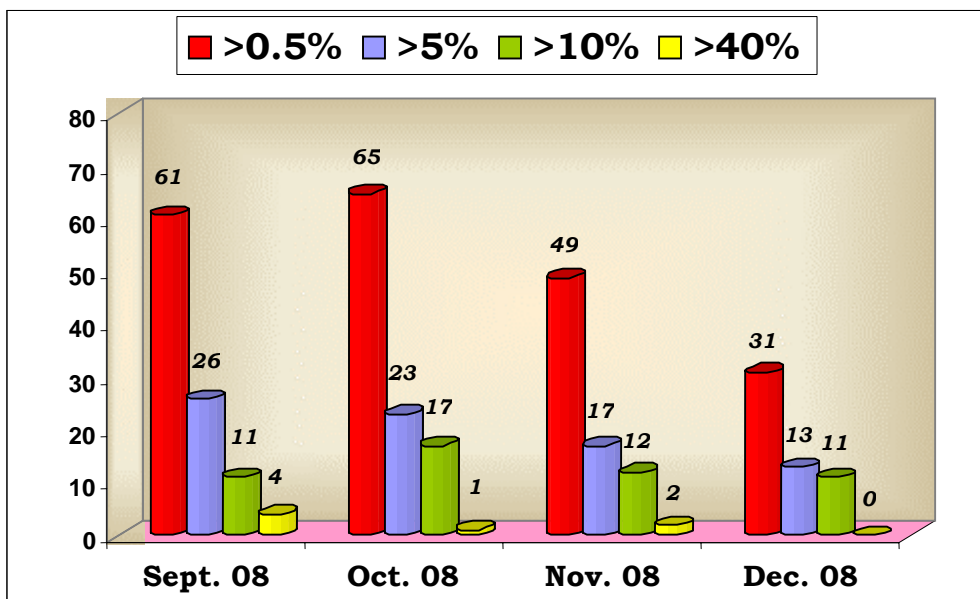


The POI congestion level between Private Service Providers and BSNL, and also among the Private Service Providers is given below in graphs: -

**Number of POIs having congestion level between Private Service Providers and BSNL/MTNL**



**Number of POIs having congestion level among the Private Service Providers**



## Critical Analysis – Operator wise: -

The worst affected POIs where Congestion level on point of interconnections (POIs) is more than 10%, from Private Service Providers to BSNL and Private Service Providers to Private Service Providers for the month of December, 2008 :-

<b>POIs between Private Operators and BSNL</b>					
<b>Bharti Airtel</b>	<b>Tata Teleservices</b>	<b>Reliance Com/ Reliance Telecom</b>	<b>Idea Cellular</b>	<b>Vodafone</b>	<b>Dishnet Wireless</b>
<b>UP-W :- Level -2</b> Almora = 32%	<b>AP :-</b> Cellone = 14.40%	<b>Reliance Comm.</b> <b>AP :-</b> Cellone = 21.75% <b>Bihar :-</b> Cellone = 16.94% <b>Reliance Telecom</b> <b>Bihar :- Level -2</b> Saharsa = 16.90% <b>HP :-</b> Shimla = 37.30% <b>North East :-</b> Cellone Shilong = 43.03%	<b>Bihar :-</b> Cellone = 12.40%  Airtel Ranchi OG = 10.20%  <b>UP-W :- Level -2</b> Kotdwar = 44.51%  Almora = 36.77%	<b>AP :-</b> Cellone = 12.70%  <b>Haryana :-</b> Cellone = 28.37%	<b>North East :-</b> Shilong NLD = 12.46%  <b>Bihar :-</b> Patna – 16.84%  Ranchi = 14.91%

<b>POIs among the Private Operators</b>					
<b>Bharti Airtel</b>	<b>Tata Teleservices</b>	<b>Reliance Com/ Reliance Telecom</b>	<b>Idea Cellular</b>	<b>Vodafone</b>	<b>Dishnet Wireless</b>
<b>Bihar :-</b> <b>Dishnet Aircel</b> = 13.12% <b>Reliance WLL</b> = 19% <b>RTL</b> = 16.38%	<b>AP :-</b> <b>Idea Cellular</b> = 15.30%	<b>Reliance Comm.</b> <b>Bihar: -</b> <b>Bharti</b> Ranchi = 13.50%  <b>Rajasthan :-</b> <b>Shyam</b> = 13.50%	<b>UP-W :-</b> <b>Reliance</b> = 16.60%	<b>Bihar :-</b> <b>Airtel</b> Patna = 14% <b>Airtel</b> Ranchi = 21% <b>Airtel</b> Bhagalpur = 25%  <b>RIM</b> = 30.85%	-

The non-provisioning and insufficient provisioning of telecom circuit resource as per traffic requirements leads to:

- inter-network congestion at the Point of Interconnection (POI)
- loss of calls
- repeated call attempts by consumers
- deterioration in Quality of Service (QoS)

- consumer dissatisfaction.

The network congestion report of all CMSPs for the period October, November and December 2008 is placed at TRAI website – [www.traigov.in](http://www.traigov.in)

---

Contact Address in case any clarification required:

Advisor (QoS), TRAI  
Mahanagar Doorsanchar Bhawan,  
Jawahar Lal Nehru Marg (Old Minto Road),  
New Delhi - 110002.  
Telephone – 011 - 23230404

Authorised for issue

Advisor (QoS)

**Comparative POI Congestion level of Cellular Mobile Service Providers**

Operators	September, 2008				October, 2008				November, 2008				December, 2008			
	>0.5%	>5.0%	10.0%	40.0%	>0.5%	>5.0%	10.0%	40.0%	>0.5%	>5.0%	10.0%	40.0%	>0.5%	>5%	>10%	>40%
<b>Bharti Airtel</b>	41	20	11	2	42	16	8	0	37	12	9	0	14	7	4	0
<b>Tata Teleservices</b>	1	1	1	0	0	0	0	0	1	1	1	1	2	2	2	0
<b>RCL</b>	19	9	5	0	12	5	5	0	15	8	3	0	11	5	4	0
<b>RTL</b>	7	5	5	2	5	5	4	1	5	5	5	0	7	4	3	1
<b>Idea</b>	19	13	7	5	32	16	13	5	16	8	5	2	11	5	5	1
<b>Vodafone</b>	22	10	7	2	23	13	8	1	16	6	6	1	12	9	6	0
<b>Dishnet Wireless</b>	18	9	6	0	11	9	3	0	9	6	3	0	8	5	3	0
<b>Aircel Limited</b>	1	0	0	0	0	0	0	0	0	0	0	0	0	0	0	0
<b>Spice</b>	1	0	0	0	1	0	0	0	1	0	0	0	1	0	0	0
<b>Total</b>	<b>129</b>	<b>67</b>	<b>42</b>	<b>11</b>	<b>126</b>	<b>64</b>	<b>41</b>	<b>7</b>	<b>100</b>	<b>46</b>	<b>32</b>	<b>4</b>	<b>66</b>	<b>37</b>	<b>27</b>	<b>2</b>

**Analysis - No. of POIs having congestion level License Service Area wise**

SL. No.	Circles	September, 2008				October, 2008				November, 2008				December, 2008			
		>0.5%	>5%	>10%	>40%	>0.5%	>5%	>10%	>40%	>0.5%	>5%	>10%	>40%	>0.5%	>5%	>10%	>40%
1	Andhra Pradesh	2	2	2	0	2	2	2	0	3	2	2	1	4	4	4	0
2	Assam	5	1	1	0	2	2	1	0	2	1	1	0	2	0	0	0
3	Bihar	19	12	9	1	20	14	9	1	17	13	10	1	22	16	14	0
4	Chennai	2	1	0	0	2	0	0	0	1	0	0	0	0	0	0	0
5	Delhi	3	0	0	0	1	0	0	0	1	0	0	0	0	0	0	0
6	Gujarat	11	5	3	0	10	6	2	0	3	0	0	0	3	2	0	0
7	Haryana	7	6	4	2	5	3	3	0	2	1	1	0	2	1	1	0
8	Himachal Pradesh	9	4	3	2	7	4	4	2	11	6	4	1	3	2	1	0
9	J & K	3	1	1	0	1	1	0	0	3	1	0	0	0	0	0	0
10	Karnataka	3	2	1	0	3	1	1	0	2	0	0	0	1	0	0	0
11	Kerala	4	2	0	0	16	4	1	0	2	0	0	0	0	0	0	0
12	Kolkata	2	1	1	0	1	1	1	0	2	0	0	0	0	0	0	0
13	Madhya Pradesh	0	0	0	0	1	1	1	0	1	1	0	0	0	0	0	0
14	Maharashtra	13	7	1	0	16	6	2	0	9	3	0	0	4	0	0	0
15	Mumbai	10	0	0	0	13	2	2	0	11	0	0	0	2	0	0	0
16	North East	6	6	4	1	5	5	4	1	4	4	3	0	5	4	2	1
17	Orissa	0	0	0	0	0	0	0	0	0	0	0	0	1	0	0	0
18	Punjab	1	1	1	0	3	0	0	0	2	0	0	0	0	0	0	0
19	Rajasthan	5	4	3	1	2	1	1	0	5	3	3	0	5	3	1	0
20	Tamilnadu	4	2	0	0	0	0	0	0	1	0	0	0	0	0	0	0
21	UP - East	6	5	4	1	6	4	1	0	8	5	3	0	5	0	0	0
22	UP - West	10	5	4	3	9	7	6	3	8	6	5	1	5	5	4	1
23	West Bengal	4	0	0	0	1	0	0	0	2	0	0	0	2	0	0	0
<b>Total</b>		<b>129</b>	<b>67</b>	<b>42</b>	<b>11</b>	<b>126</b>	<b>64</b>	<b>41</b>	<b>7</b>	<b>100</b>	<b>46</b>	<b>32</b>	<b>4</b>	<b>66</b>	<b>37</b>	<b>27</b>	<b>2</b>

**POIs Congestion Report of M/s Bharti Airtel Limited for the month of October, November & December 2008**

Name of Circle and POIs	Benchmark <0.5%			Action Taken Report
	October, 2008	November, 2008	December, 2008	
<b>Bihar</b>				
<b>Cellone</b>	9.10%	4.90%	8.72%	A/T in progress for 126 E1's
<b>POI With BSNL Level 1 TAX</b>				
Patna	0.00%	0.60%	0.00%	
<b>POI With BSNL Level 2 TAX</b>				
Aarah	1.20%	0.00%	0.00%	
<b>POI with Private Operators</b>				
Dishnet Aircel	15.90%	12.20%	13.12%	60 E1's augmentation in last week of Dec'08
Reliance WLL/WLN	25.00%	11.00%	19.00%	37 E1's augmented, 75 E1 augmentation in progress
Reliance Telecom	17.20%	18.50%	16.38%	20 E1's augmented, 100 E1 augmentation in progress
TATA Mobile/Fix	3.10%	0.00%	1.50%	40 E1's augmented, 63 E1 augmentation in progress
<b>Gujarat</b>				
<b>POI with BSNL Level 2 TAX</b>				
Amreli	0.00%	0.00%	5.25%	Temporary congestion due to link outages
<b>Haryana</b>				
<b>POI with Private Operators</b>				
Vodafone	0.56%	0.00%	0.00%	
<b>Himachal Pradesh</b>				
<b>POI with BSNL Level 2Tax</b>				
Hamirpur	0.00%	0.62%	0.00%	
<b>POI with Private Operators</b>				
BTSOL NLD	0.80%	0.00%	0.00%	
<b>Kolkata</b>				
<b>POI with Private Operators</b>				
RIM Kolkata	0.00%	1.22%	0.00%	
<b>Madhya Pradesh</b>				
<b>Cellone</b>	13.33%	0.00%	0.00%	
<b>POI with BSNL Level 1 Tax</b>				
Bhopal Arera OG	0.00%	7.89%	0.00%	
<b>Maharashtra &amp; Goa</b>				
<b>Cellone</b>	9.22%	0.00%	0.00%	
Cellone Sakkadara	8.12%	0.00%	0.00%	
<b>POI with Private Operators</b>				
Bharti_Idea	18.00%	2.95%	0.00%	
Tata Nasik	0.00%	0.80%	0.00%	
Tata CDMA Mumbai	3.40%	0.00%	0.00%	
Reliance WLL Outgoing	1.40%	0.00%	0.00%	
Reliance Pune	8.32%	2.33%	0.92%	We had applied for 70 E1 Reliance agreed to provide only 50 E1s. Out of these 50, Reliance provided 10 E1s with Pune GMSC. Remaining 40 E1s will be provided from Solapur in Jan '09
Idea Outgoing, Pune	4.91%	0.00%	0.00%	
Idea Outgong	10.28%	0.00%	0.00%	
BPL	3.30%	5.54%	0.85%	Augmentation of 30 E1s for outgoing done. Remaining augmentation in progress.
<b>Tamil Nadu</b>				
<b>POI with Private Operators</b>				
Reliance Mobile Chennai Airtel OG	0.00%	2.52%	0.00%	
<b>UP - East</b>				
<b>Cellone</b>	8.47%	12.49%	2.33%	126 E1s AT is in progress, remaining 391 E1s feasibility awaited
<b>POI with BSNL Level 1 TAX</b>				
IndraNagar Tax (B)	0.00%	4.00%	0.00%	
Indiranagar Axe Exch. MSC-1	25.68%	14.36%	1.52%	40 E1s feasibility awaited since 14 May, 08.
Indranagar Axe. Exch.	6.26%	9.56%	1.52%	
<b>POI with Private Operators</b>				
Reliance Fixed	0.84%	2.11%	1.94%	30 E1s augmentation & traffic optimization is under progress
Reliance Mobile	7.25%	12.00%	0.00%	
Idea Cellular	3.37%	3.48%	0.00%	



<b>West Bengal</b>				
<b>POI with Private Operators</b>				
Vodafone WB	1.61%	1.77%	0.00%	
<b>Mumbai</b>				
<b>POI MTNL</b>				
Dolphin Total	1.50%	1.00%	0.00%	
<b>POI with Private Operators</b>				
Tata CDMA Total	1.00%	0.80%	0.00%	
Tata CDMA Total	0.75%	1.50%	0.00%	
Tata CDMA Total	2.00%	0.00%	0.00%	
Reliance Fixed	1.25%	0.00%	0.00%	
Reliance CDMA Total	0.00%	0.85%	0.00%	
BPL	1.35%	1.50%	0.00%	
BPL MAH Total	1.75%	1.25%	0.00%	
Bharti-Vodafone Total	2.15%	1.25%	0.00%	
BTSOL Fixed Total	0.00%	1.22%	0.00%	
Idea Mumbai Total	0.00%	1.50%	0.00%	
Idea MAH Total	0.65%	1.25%	0.00%	
Tata Fixed line Total	1.60%	1.50%	0.00%	
<b>Chennai</b>				
<b>POI with Private Operators</b>				
Reliance	4.40%	4.40%	0.00%	
<b>Punjab</b>				
<b>POI with Private Operators</b>				
BTSOL NLD	1.70%	0.00%	0.00%	
BTSOL ILD	1.31%	0.00%	0.00%	
<b>Assam</b>				
Cellone	27.00%	0.00%	0.00%	
<b>POI with BSNL Level 2 TAX</b>				
Silchar	0.00%	15.00%	0.00%	
<b>UP -WEST</b>				
Cellone	8.69%	32.17%	6.70%	1 STM augmented on 24th Dec. Congestion would now be within benchmark.
<b>POI with BSNL Level 2 TAX</b>				
Almorah	1.69%	0.00%	32.00%	2 E1s Feasibility awaited since 15th Sept. 2007
<b>POI with Private Operators</b>				
Reliance Fixed	0.00%	2.96%	0.00%	
Reliance Mobile	3.48%	11.57%	0.00%	

POIs Congestion Report of M/s Tata Teleservices for the months of October, November & December 2008				
Name of Circle and POIs	Benchmark <0.5%			Action Taken Report
	October ,2008	November,2008	December,2008	
<b>Andhra Pradesh</b>				
Cellone Safabad	0.00%	0.00%	14.40%	Need to augment
<b>POI with Private Operators</b>				
Idea NLD	0.20%	56.20%	0.00%	
Idea from GMSC	0.00%	0.00%	15.30%	Need to augment new POI with ZTE is under progress

**POIs congestion Report of M/s Reliance Communications Ltd. for the month of October, November & December,2008**

Name of Circle and POIs	Benchmark <0.5%			Action taken report
	October, 2008	November, 2008	December, 2008	
<b>Andhra Pradesh</b>				
Cellone	27.50%	23.00%	21.75%	Applied for 130 E1s on 28.10.08. BSNL has informed these are currently not feasible. Matter is also escalated to Ops BSNL HQ.
<b>Bihar</b>				
Cellone, Bihar	16.30%	17.50%	16.94%	Testing completed for 63 E1s. Augmentation is argeted by 20.1.09
<b>POI with BSNL Level 1 TAX</b>				
Rajender Nagar	3.00%	0.00%	0.00%	
<b>POI with BSNL Level 2 TAX</b>				
MUZAFFARPUR	2.10%	0.00%	0.00%	
<b>POI with Private Operators</b>				
Bharti	0.00%	9.40%	13.50%	20 E1s augmentation on 6.1.09 . Add 10 E1s expected by 15.1.09. Overflow reduced to 40%. Add 38 E1s by 31.1.09
<b>Karnataka</b>				
<b>POI with BSNL Level 2 TAX - Basic POIs</b>				
Hasan TAX	1.10%	0.00%	0.00%	
Somwarpet	20.70%	0.74%	0.00%	
<b>Maharashtra</b>				
<b>POI with Private Operators</b>				
Idea Cellular	0.00%	8.28%	0.00%	
<b>Rajasthan</b>				
Cellone	0.00%	0.00%	0.79%	Applied for 63 E1s in Sept' 08. Demand Note awaited
<b>POI with BSNL Level 1 TAX</b>				
Jhunjhunu	11.80%	0.00%	0.00%	
<b>POI with Private Operators</b>				
Shyam	0.00%	1.60%	13.50%	4 E1s augmented on 8.1.09. No congestion now.
<b>UP - East</b>				
<b>POI with Private Operators</b>				
Airtel,Lucknow	0.00%	6.59%	1.50%	63 E1s are under discussion with Airtel
<b>UP - W</b>				
<b>POI with Private Operators</b>				
Bharti	0.00%	0.90%	0.00%	
Idea	0.00%	7.10%	0.00%	
<b>West Bengal</b>				
<b>POI with Private Operators</b>				
Bharti	0.00%	2.70%	2.80%	3 E1s augmented. Rest augmentation of 13 E1s is pending for Provisioning.
Tata	0.00%	0.00%	3.60%	5 E1s under augmentation will be augmented by 17.1.09
<b>Haryana</b>				
Cellone, Haryana	2.40%	1.80%	1.71%	Demand Note is received for 40 E1s. BSNL is not allowing installation of our equipment due to dispute payment issue of Rs. 9.5 lacs, matter escalated to BSNL HQ also.
<b>POI with BSNL Level 2 TAX - Basic POIs</b>				
Ambala				
<b>Chennai</b>				
Cellone	0.60%	0.00%	0.00%	
<b>Himachal Pradesh</b>				
Cellone, Himachal Pradesh	4.80%	6.90%	6.48%	IUC issues resolved. Reconciled payment by 9.1.09 . BSNL Demand Note for 5 E1s by 15.1.09. Commissioned by 31.1.09
<b>POI with BSNL Level 2 TAX - Basic POIs</b>				
Bilaspur	0.00%	0.99%	0.00%	
Hamirpur	25.00%	22.41%	0.00%	
Solan	4.80%	0.00%	0.00%	
<b>Mumbai</b>				
<b>POI with Private Operators</b>				
Vodafone	0.00%	0.00%	1.80%	10 E1s augmentation on 5.1.09. No congestion now.
<b>Kolkata</b>				
<b>POI with Private Operators</b>				
Bharti	0.00%	2.70%	0.00%	

POIs Congestion Report of M/s Reliance Telecom Ltd. for the months of October, November & December,2008				
Name of Circle and POIs	Benchmark <0.5%			Action Taken Report
	October,2008	November,2008	December,2008	
<b>Bihar</b>				
<i>POI with BSNL Level 2 TAX</i>				
Saharsa	14.70%	16.90%	16.90%	Augmentation of POI is approved but as per the instructions of SSA. POI built up has to be shifted from Microwave building to TAX building BSNL order for the same is awaited.
Katihar				
<b>POI with Private Operators</b>				
Airtel Local Bihar	8.80%	13.40%	1.12%	Final overflow route, atleast 1 E1s augmentation planned in January which will remove congestion in all Airtel POI
<b>Himachal Pradesh</b>				
<i>POI with BSNL Level 1 TAX</i>				
Shimla	33.16%	36.93%	37.30%	Advise note received for 8 E1s, to be commissioned by 2nd week of January
<b>Assam</b>				
<b>POI with Private Operators</b>				
Aircel Guwahati	0.00%	0.00%	0.60%	No comments
Airtel Guwahati	0.00%	0.00%	2.60%	No comments
<b>North East</b>				
Cellone Shilong	49.18%	17.83%	43.03%	STM4 between new MSC and BSNL required for enhancing has been tested and found OK. But the AT papers are still to be signed from the concerned person from BSNL end. Only after signing, BSNL will release the circuits, thereby bringing down the utilisation
<i>POI with BSNL Level 2 TAX</i>				
Shilong	17.37%	13.86%	8.85%	STM4 between new MSC and BSNL required for enhancing has been tested and found OK. But the AT papers are still to be signed from the concerned person from BSNL end. Only after signing, BSNL will release the circuits, thereby bringing down the utilisation

**POI Congestion Report of M/s Idea Cellular Ltd. for the month of October, November & December, 2008**

Name of Circle and POIs	Benchmark <0.5%			Action Taken Report
	October,2008	November,2008	December,2008	
<b>Bihar</b>				
Cellone Patna OG	0.00%	0.00%	12.40%	E1 augmentation under process with BSNL
<b>POI with Private Operators</b>				
Airtel Patna OG	19.00%	8.00%	0.00%	
Airtel Ranchi OG	13.00%	0.00%	10.20%	32 E1 augmentation in process
BTSOL NLD	0.00%	4.00%	1.00%	Augmentation under process
BTSOL ILD	0.00%	1.00%	1.20%	Augmentation under process
Tata Patna	12.00%	0.00%	0.00%	
RIM NLD	0.00%	0.00%	4.00%	8 E1 augmentaion in process
VSNL NLD	0.00%	0.00%	0.80%	Augmentation under process
<b>Rajasthan</b>				
<b>POI with Private Operators</b>				
Spice Jaipur	0.00%	0.00%	1.32%	Overflow defined on other NLD's
<b>UP - West</b>				
<b>POI with BSNL Level 2 TAX</b>				
Kotdwar	52.81%	71.49%	44.51%	AT for augmentation of 2 E1s done. Approval from BSNL awaited.
Almora	54.09%	35.00%	36.77%	2 ports approved for augmentation AT is not scheduled from BSNL end.
ALMR MSS3	40.71%	0.00%	0.00%	
<b>POI with Private Operators</b>				
Vodafone - UP -E	23.96%	0.00%	0.00%	
RIL-UPW	25.30%	18.04%	16.60%	Ports augmentation is pending from RIL end.
RIL-UPW	11.38%	0.00%	0.00%	
<b>Maharashtra</b>				
<b>POI with BSNL Level 2 TAX</b>				
Beed	3.60%	0.00%	0.00%	
Jalna	1.40%	0.00%	0.00%	
Jalgaon	0.00%	2.75%	0.00%	
Nanded	0.81%	0.00%	0.00%	
Pen	0.00%	1.63%	0.00%	
Sangli	2.29%	5.51%	2.58%	Accidental congestion due to blocking of partial devices - 2nd and 5th Dec '08
<b>POI with Private Operators</b>				
Idea Mumbai	1.51%	0.00%	0.00%	
<b>Kerala</b>				
Cellone MSC1	2.57%	0.00%	0.00%	
Cellone MSC5	2.79%	0.00%	0.00%	
<b>POI with BSNL Level 2 TAX</b>				
Thiruvalla	0.00%	0.78%	0.00%	
<b>POI with Private Operators</b>				
Vodafone CMSP MSC1	5.56%	0.00%	0.00%	
Vodafone CMSP MSC1	9.88%	0.00%	0.00%	
Vodafone CMSP MSC3	0.67%	0.00%	0.00%	
Vodafone CMSP MSC5	1.16%	0.00%	0.00%	
Vodafone NLD MSC1	0.97%	0.00%	0.00%	
Airtel MSC3	30.00%	0.00%	0.00%	
Reliance ILD MSC1	3.83%	0.00%	0.00%	
Reliance ILD MSC3	0.54%	0.00%	0.00%	
Reliance NLD MSC2	1.21%	0.00%	0.00%	
Reliance NLD MSC3	0.70%	0.00%	0.00%	
Reliance Mobile MSC1	7.23%	0.00%	0.00%	
VSNL NLD MSC1	1.81%	0.00%	0.00%	
Tata Mobile MSC3	1.02%	0.00%	0.00%	
<b>Haryana</b>				
Cellone Panipat	25.29%	0.00%	0.00%	
<b>Himachal Pradesh</b>				
Cellone	62.93%	47.80%	0.00%	
<b>POI with BSNL Level 1 TAX</b>				
Shimla	56.62%	19.08%	0.00%	
Shimla	0.00%	7.47%	0.00%	
Shimla ILD	0.00%	0.99%	0.00%	
<b>POI with BSNL Level 2 TAX</b>				
Mandi	0.00%	1.37%	0.00%	
Dharamsala	0.00%	1.39%	0.00%	

POI Congestion Report of M/s Vodafone Essar Mobile Services Ltd. for the month of October, November & December 2008				
Name of Circle and POIs	Benchmark <0.5%			Action Taken Report
	October,2008	November,2008	December,2008	
<b>Delhi</b>				
<b>POI with Private Operators</b>				
Reliance NLD	2.97%	2.97%	0.00%	
<b>Bihar</b>				
<b>POI with Private Operators</b>				
Airtel O/C	97.00%	0.00%	0.00%	
Airtel OG Patna	0.00%	0.00%	14.00%	No comments
Airtel OG Ranchi	0.00%	76.12%	21.00%	Augmentation of 15 E1 is in process
Airtel OG Bhagalpur	0.00%	24.77%	25.00%	Augmentation of 5 E1 is in process
RIM Patna	0.00%	0.00%	30.85%	Augmentation of 5 E1 is in process
<b>Kerala</b>				
Cellone	2.41%	1.63%	0.00%	
<b>Punjab</b>				
<b>POI with Private Operators</b>				
Spice Jalandhar	0.00%	1.64%	0.00%	
Reliance NLD	3.08%	0.62%	0.00%	
<b>Andhra Pradesh</b>				
Cellone	13.70%	4.70%	12.70%	36 no. of E1s demand pending with BSNL since Apr07
<b>Gujarat</b>				
<b>POI with BSNL Level 2 TAX</b>				
Ahmedabad1 GMSC9	2.18%	0.00%	0.00%	
Ahmedabad2 GMSC9	9.62%	0.00%	0.00%	
Ahmedabad3 GMSC9	13.22%	0.00%	0.00%	
Ahmedabad4 GMSC9	7.42%	0.00%	0.00%	
Ahmedabad3 MSC1	7.57%	0.00%	0.00%	
<b>POI with Private Operators</b>				
CMPS Airtel MSC5	2.78%	0.00%	0.00%	
BSO RIM WS O/G MSC3	20.66%	0.00%	0.00%	
RIM Mobile	0.00%	0.00%	7.71%	New 14 pcm demanded on 20.12.2008
RIM MSC1 BSO 93 O/G	5.76%	0.00%	0.00%	
RIM MSC2 BSO 93 O/G	0.00%	0.00%	2.40%	New 5 pcm demanded on 20.12.2008
RIM2 MSC3	0.00%	1.27%	0.00%	
RIM MSC8	0.00%	0.99%	0.00%	
RIM MSS03	0.00%	1.54%	0.00%	
Idea MSC1	1.38%	0.00%	0.00%	
Idea MSC4	0.85%	0.00%	0.00%	
<b>Rajasthan</b>				
Cellone	0.00%	0.00%	9.35%	67 E1 Augmentation in progress
Cellone NLD	0.00%	2.20%	0.00%	
<b>POI with Private Operators</b>				
Reliance NLD	0.00%	16.58%	0.00%	
Reliance ILD	0.00%	10.50%	6.91%	Reliance ILD is a seeker and has not applied for any augmentation
Reliance Cellular	0.00%	12.70%	0.00%	
Tata	3.24%	0.00%	0.00%	
<b>Haryana</b>				
Cellone	39.94%	37.38%	28.37%	219 E1's demand pending with BSNL end.
<b>POI with Private Operators</b>				
REL NLD	16.48%	0.00%	0.00%	
Reliance ILD	0.00%	0.00%	0.00%	
<b>Maharashtra</b>				
Cellone	5.76%	3.21%	2.71%	No comments
<b>POI with Private Operators</b>				
Reliance Mum	2.11%	0.00%	0.00%	
<b>Mumbai</b>				
<b>POI with Private Operators</b>				
RIL-Local FWT	0.69%	0.00%	0.00%	
RIL NLD	32.00%	0.00%	0.00%	
RIL WLL	20.38%	0.00%	0.00%	
RIL CDMA Mah	0.00%	0.00%	0.75%	No comments

**POI Congestion Report of M/s Dishnet Wireless Ltd. for the month of October, November & December 2008**

Name of Circle and POIs	Benchmark <0.5%			Action Taken Report
	October,2008	November,2008	December,2008	
<b>Assam</b>				
<i>POI with BSNL Level 1 TAX</i>				
Guwahati MSC2 NLD	0.00%	3.19%	0.00%	
Jorhat MSC1	6.01%	0.00%	0.00%	
<b>North East</b>				
<i>POI with BSNL Level 1 TAX</i>				
Shillong MSC1 Local	6.87%	0.00%	1.81%	No comments
Shillong NLD	12.73%	9.08%	12.46%	No comments
Dimapur MSC-1 Local	10.12%	16.61%	6.02%	No comments
<b>Orissa</b>				
<i>POI with BSNL Level 1 TAX</i>				
Bhubaneshwar MSC1 NLD	0.00%	0.00%	4.53%	No comments
<b>J &amp; K</b>				
<i>POI with BSNL Level 1 TAX</i>				
Jammu Local	0.00%	1.54%	0.00%	
Jammu NLD	5.49%	8.82%	0.00%	
Srinagar MSC1 Local	0.00%	2.57%	0.00%	
<b>Bihar</b>				
<i>POI with BSNL Level 1 TAX</i>				
Patna MSC1 ILD	2.96%	0.00%	0.00%	
Patna Local	6.15%	12.40%	9.85%	No comments
Patna NLD	5.80%	0.00%	0.00%	
Patna MSC2 Local	8.80%	21.70%	16.84%	No comments
Ranchi MSC1	2.38%	0.00%	0.00%	
Ranchi MSC1 Local	0.00%	8.98%	14.91%	No comments
<b>Himachal Pradesh</b>				
<i>POI with BSNL Level 2 TAX</i>				
Shimla MSC1 Local	0.00%	0.00%	0.68%	No comments
<b>Kolkata</b>				
<i>POI with BSNL Level 1 TAX</i>				
Kolkata NLD	13.22%	0.00%	0.00%	

**POI Congestion Report of M/s Spice for the month of October, November & December,2008**

Name of Circle and POIs	Benchmark <0.5%			Action Taken Report
	October,2008	November,2008	December,2008	
<b>Karnataka</b>				
<i>POI with BSNL Level 1 TAX</i>				
WMS TX Bangalore	2.00%	4.20%	4.10%	No comments