

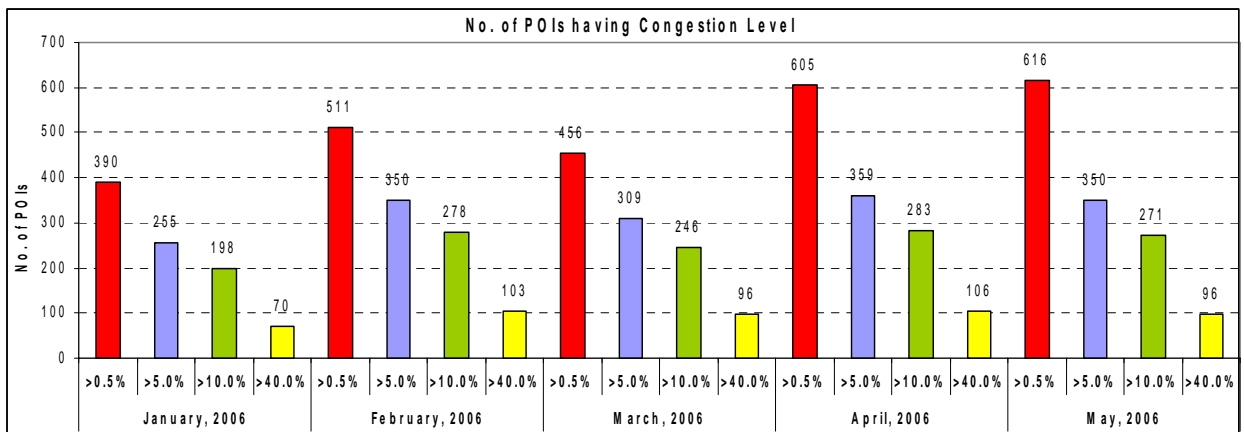
TELECOM REGULATORY AUTHORITY OF INDIA

28th July, 2006
PRESS RELEASE No. 72 / 2006

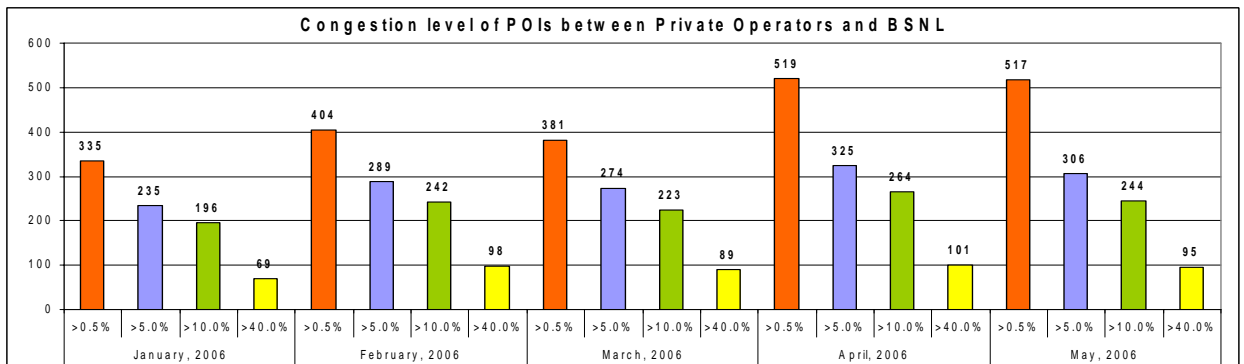
TRAI Releases Network/POIs congestion report of the CMSPs for the month of January - May, 2006

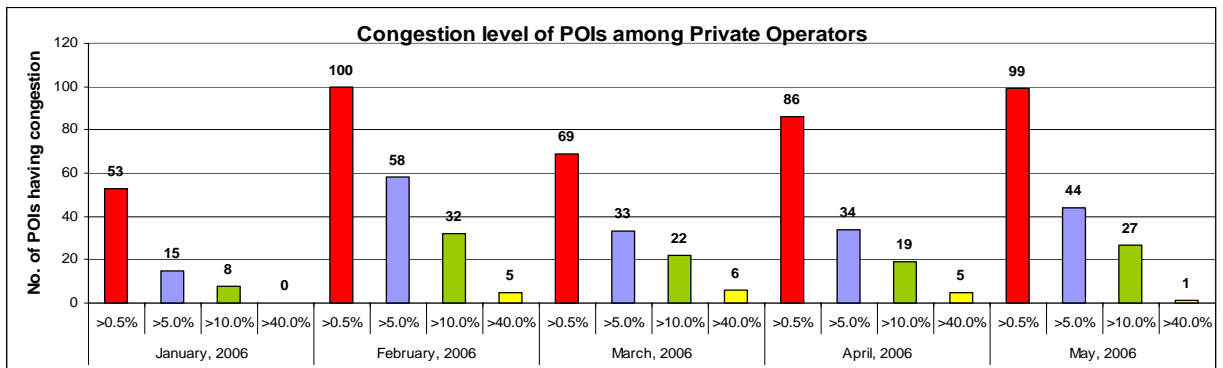
TRAI has been monitoring the level of congestion at the Point of Interconnection (POI) between various service providers on a monthly basis. This parameter signifies the ease by which a customer of one network is able to communicate with a customer of another network. This parameter also reflects as to how effective is the interconnection between two networks. The benchmark notified by TRAI in the QoS Regulation of July 2005 for this parameter is < 0.5%. This means out of 200 calls between two operators only one call should face congestion problem. The result of the monitoring reveals that in a number of areas, the degree of congestion between the operators is alarming. In a number of cities, the level of congestion between the networks of different operators is far more than this benchmark and the number of such places are increasing.

TRAI has been releasing data on POI Congestion from time to time. The POI congestion Report for the month of January, 2006 to May, 2006 shows that the number of POIs having congestion has increased from 390 in January, 2006 to 616 in May, 2006. The analysis of the degree of congestion in these POIs is given below:-



The POIs congestion level between Private CMSPs and BSNL, and also among the Private CMSPs is given below in bar graphs:-





The worst affected POIs where Congestion level on point of interconnections (POIs) is 80% or more, from Private Operator to BSNL:-

Bharti	Hutch	Reliance Infocom Limited	Idea Cellular Limited	Tata Tele.
With BSNL Sasaram (86.21%) Himantnagar (93.03%) Junagarh 2 (89.17%) Surendernagar (88.26%) Jammu Tax Level1 (80.24%) BSNL STD /Local –Shillong-Home Subs OG (82.90%) Sirohi (89.40%) Churu (89.11%) Nagaur (87.58%) Jaunpur(94.40%) Hamirpur (92.50%)	With BSNL Gazipur (87.00%)	With BSNL Durg (100%) Pune (95.40%) Balasore,B30 (83.50%) Alwar(80.90%) Bhadohi (100%) Kolkata (100%) Anand (100%) Dharampuri (100%) Hoshiarpur (100%) Tarantaran (100%)	With BSNL Shahjapur (80.73%)	With BSNL BSNL_Patna NLD (84.47%)

The POIs congestion in the network is on account of inadequate junctions between the two networks and this leads to loss of calls and the consequent poor quality of service to the consumers.

The network congestion report of all CMSPs for the period January, 2006 to May, 2006 is placed at TRAI website (www.traigov.in).

(M.C.Chaube)
Advisor (QoS)

Comparative POIs Congestion Report of M/s Bharti Tele-ventures Limited for the months of Jan, 2006 - May, 2006

Name of Circle and POIs	Benchmark >0.5%				
	Jan	Feb	Mar	Apr	May
Assam					
POI With BSNL(Level 1 Tax)					
BSNL-STD/Local-Guwahati-Home Subs	17.90%	22.40%	13.50%	13.50%	0.00%
JORHAT BSNL	0.00%	17.50%	0.00%	0.00%	0.00%
Inroamers calling Local /STD	82.70%	95.70%	62.50%	62.50%	0.00%
POI with other NLDO					
BTSOL Kolkatta NLD	0.00%	0.00%	0.40%	0.40%	0.00%
BTSOL Kolkatta ILD	0.00%	0.00%	1.10%	1.10%	0.00%
POI with other CMTO					
Reliance Guwahati	0.00%	28.10%	0.50%	0.00%	20.50%
Bihar					
POI with other NLDO /ILDO					
BTSOL NLD Kolkata (Patna MSC)	0.00%	0.06%	0.80%	0.10%	0.00%
BTSOL NLD Kolkata (Ranchi MSC)	0.10%	0.51%	NA	0.00%	0.00%
BTSOL ILD (International roamer) (Patna MSC)	1.80%	0.00%	0.00%	0.00%	0.00%
POI with Other CMTO					
Reliance Telecom Ltd.,(Patna MSC)	0.60%	19.11%	50.67%	0.55%	2.41%
Tata Mobile (Patna MSC)	0.00%	3.58%	0.00%	NA	2.59%
Tata FIX (Patna MSC)	0.40%	1.55%	0.00%	NA	
Reliance fixed (Ranchi MSC)				9.64%	20.77%
Reliance WLL (Ranchi MSC)				13.87%	28.62%
Reliance WLL (Patna MSC)	2.40%	6.47%	0.00%	0.59%	2.11%
Reliance Fix (Patna MSC)	1.20%	11.10%	39.51%	9.03%	20.62%
TATA Mobile (Ranchi MSC)	0.00%	2.46%	0.04%	NA	2.41%
TATA Fixed (Ranchi MSC)	0.00%	0.37%	0.05%	0.08%	
POI With BSNL Level 1 TAX					
PATNA Level 1Tax (Buddha Marg)	47.70%	37.66%	56.51%	31.49%	43.46%
Patna level 1 Tax for ILD (Buddha Marg)	0.00%	0.00%	0.00%	0.00%	0.14%
Patna L1 for national Roamer (Buddha Marg)	28.20%	36.00%	NA	6.19%	0.14%
Patna L1 National Roamer ILD (Buddha Marg)	0.00%	0.00%		0.00%	44.53%
Rajender NagarL1 Tax	18.50%	16.00%	31.79%	0.00%	11.59%
Rajender Nagar L1 Tax for ILD	0.00%	0.00%		13.06%	0.00%
Rajender Nagar L1 Tax national Roamer			87.58%	79.05%	79.84%
POI With BSNL Level 2 TAX					
Ranchi	0.00%	0.00%	0.00%	0.00%	0.00%
Gaya	54.90%	64.63%	51.58%	10.85%	15.24%
Muzaffarpur	1.10%	10.74%	28.82%	17.97%	3.36%
Bhagalpur	50.90%	61.72%	75.79%	20.46%	29.12%
Jameshedpur	0.80%	0.00%	0.00%	0.61%	0.00%
Chapra	60.40%	42.57%	66.26%	44.33%	42.47%
Dharbhanga	42.50%	56.88%	76.63%	43.41%	25.36%
Motihari	37.80%	22.01%	51.44%	30.05%	38.20%
Hazaribagh	0.20%	3.36%	10.44%	4.12%	10.77%
Munger	37.40%	47.23%	76.62%	57.24%	20.81%
Arrah POI	27.40%	5.26%	42.77%	16.34%	29.96%
Sasaram					86.21%

Katihar	0.01%	3.79%	28.87%	10.87%	13.21%
Dhanbad			0.60%	0.00%	
Chennai					
POI with BSNL level 1 TAX					
Flower Bazaar	36.30%	5.00%	6.90%	8.25%	11.50%
Haddow Rd Tax	12.94%	0.00%	0.00%	0.00%	2.70%
POI with BSNL Tandem					
Flower Bazaar Tandem	0.00%	0.00%	0.00%	0.00%	0.00%
KK Nagar Tandem	5.19%	0.00%	0.00%	0.00%	0.00%
POI with other operators					
Hutch			15.80%	0.00%	0.00%
Aircel, Direct POI			4.48%	6.57%	14.52%
Aircel TN - Outgoing	0.00%	17.00%	NA	1.91%	11.01%
Reliance Mobile TN	NA	16.00%	0.00%	0.00%	8.00%
POI with other NLDO & other operators					
Reliance ILD	0.00%	0.00%	0.00%	0.00%	0.00%
Delhi					
POI with long Distance operators					
BSNL		5.60%	17.60%	4.40%	3.20%
POI with other operators					
Dolphin			6.40%	8.40%	15.50%
Gujarat					
POI with other operators					
IDEA, Ahmedabad	0.00%	0.01%	0.14%	0.02%	0.13%
IDEA,Rajkot	0.00%	0.05%	0.00%	0.00%	0.00%
Hutch, Ahmedabad Corp.House	0.00%	0.12%	0.09%	0.00%	0.00%
Hutch,Ahmedabad Sakar	0.00%	0.01%	0.13%	0.00%	0.10%
TATA Fix, Ahmedabad	0.00%	0.00%	0.00%	0.00%	0.00%
TATA Fix Rajkot	0.00%	0.00%	0.00%	0.00%	0.00%
TATA WLL, Ahmedabad	0.00%	0.00%	0.00%	0.16%	0.00%
Tata Wireline	0.00%	0.00%	0.00%	0.00%	0.00%
POI with BSNL Level 1 TAX					
GULBAI TEKRA	0.86%	2.95%	1.95%	6.47%	3.61%
Bhadra - ahd	0.00%	1.34%	0.94%	3.25%	3.25%
POI with BSNL Level 2 TAX					
Gulbai tekra _ahd	0.00%	2.66%	9.38%	25.62%	25.36%
Gulbai tekra _ahd	0.00%	8.69%	6.30%	15.40%	18.00%
Valsad					15.94%
Surat	0.00%	0.00%	0.00%	0.00%	
Bharuch	0.02%	0.25%	0.37%	0.00%	6.27%
Palanpur					32.95%
Anand	1.28%	0.00%	0.00%	0.00%	
Palanpur	0.00%	0.08%	NA	13.92%	
Himantnagarh	64.61%	87.82%	89.44%	92.00%	93.03%
Mehasana	0.00%	0.00%	0.00%	0.32%	1.11%
Bhavanagar	11.73%	10.08%	0.00%	0.00%	
Junagadh	12.11%	26.48%	34.56%	56.34%	51.76%
Junagadh 2					89.17%
Jamanagar	0.00%	0.00%	0.18%	0.00%	10.19%
Bhuj	0.83%	31.76%	49.55%	11.40%	15.68%
Jamnagar	0.00%	0.00%	13.94%	11.59%	
Jamnagar 2					2.43%
Rajkot	36.29%	61.17%	68.44%	53.47%	0.00%
Surendranagar	88.52%	95.46%	96.89%	97.22%	88.26%

Amrelli	11.07%	33.74%	69.28%	73.23%	69.68%
Bhaktinagar				70.20%	75.36%
Haryana					
POI With CMTO					
Idea			0.67%	0.00%	0.01%
POI With Other NLDO					
NLD MSC 2			2.09%	0.00%	0.00%
POI with BSNL Level 1 Tax					
BSNL Cellone OG	3.00%	2.41%	7.36%	0.00%	0.78%
Ambala outgoing	0.00%	0.01%	0.24%	0.38%	1.87%
Ambala City					0.51%
Cellone Ambala			23.29%	0.00%	0.00%
POI with BSNL Level 2 Tax					
Rohtak	0.00%	0.00%	0.00%	0.00%	0.00%
Jind	1.00%	12.22%	0.00%	0.00%	0.15%
Hissar	0.00%	0.00%	0.00%	0.00%	0.01%
Gurgaon	0.00%	0.60%	0.27%	0.00%	0.00%
Rewari			0.60%	0.19%	0.04%
Himachal Pradesh					
POI with BSNL Level 1 Tax					
Shimla	19.00%	30.95%	33.93%	3.29%	11.66%
Shimla CellOne	19.00%	19.58%	19.51%	15.57%	6.14%
POI with BSNL Level 2 Tax					
SOLAN	0.00%	0.00%	0.00%	0.00%	0.00%
Kullu	1.00%	0.00%	0.00%	0.00%	0.00%
Mandi	0.01%	1.33%	0.00%	0.06%	
DHARAMSHALA	25.00%	48.09%	47.61%	44.07%	57.27%
HAMIRPUR	47.00%	62.28%	61.30%	58.14%	38.41%
POI With CMTO					
Reliance					2.24%
Reliance WLL				2.59%	9.42%
J & K					
JAMMU TAX level 1	81.00%	73.31%	72.52%	0.69%	80.24%
Srinager Tax Level 1	22.00%	68.32%	4.66%	0.00%	0.00%
BTSOL - INT				6.16%	0.00%
Jammu ISD				1.19%	0.00%
Karnataka					
POI with BSNL Level 2 Tax					
Mangalore	5.15%	0.26%	6.31%	0.81%	0.00%
TUMKUR	8.66%	10.47%	11.31%	1.50%	0.00%
MANDYA	0.43%	4.56%	1.54%	6.20%	0.15%
HASSAN	31.89%	36.47%	4.29%	3.40%	0.24%
Hublie		2.20%	7.56%	4.40%	0.31%
BELGAUM	27.42%	27.94%	20.34%	5.16%	0.28%
BELLARY	0.00%	0.00%	0.00%	0.00%	0.00%
BIJAPUR	36.68%	35.48%	40.69%	0.00%	0.62%
KARWAR	27.60%	32.59%	0.02%	3.78%	0.00%
Kolar	0.00%	0.00%	0.00%	0.68%	0.00%
Madikeri	1.51%	0.00%	0.00%	0.00%	0.00%
Gulbarga	1.73%	9.74%	14.65%	4.83%	0.15%
Mysore	3.75%	7.38%	9.29%	1.20%	0.25%
Simoga	3.56%	6.06%	10.09%	0.00%	0.00%
Bidar				1.23%	0.15%
Devangiri					1.92%

POI with BSNL Level 1 Tax					
TAX	1.69%	8.34%	7.03%	10.19%	0.00%
Local Exch Jayanagar			3.23%	8.91%	0.00%
POI with other operators					
Spice	2.22%	11.24%	3.02%	0.35%	0.72%
Hutch	2.08%	8.84%	11.52%	0.98%	0.50%
Tata	0.00%	4.80%	0.00%	0.12%	0.01%
Touchtel			3.27%	0.76%	0.00%
Kerala					
POI with other operators					
Reliance NLD	0.00%	0.00%	2.14%	0.00%	0.00%
Reliance ILD	9.80%	0.00%	0.00%	0.00%	0.00%
BPL	0.00%	0.00%	0.00%	0.00%	0.00%
Escotel			3.20%	0.00%	0.00%
POI with BSNL Level 2 TAX					
Trivandrum	0.00%	0.00%	0.00%	0.00%	0.00%
Kottayam	0.00%	0.00%	0.00%	0.00%	0.00%
Thiruvalla	0.00%	0.00%	0.00%	0.00%	0.00%
Palakkad	0.00%	0.00%	0.00%	2.11%	0.00%
Calicut	0.00%	0.00%	0.00%	0.00%	0.00%
Cellone	10.08%	8.20%	12.00%	0.00%	7.00%
POI with other operators					
Tata Fixed			1.00%	0.00%	0.00%
Tata Mobile			2.00%	0.00%	0.00%
Kolkatta					
POI with other operators					
RTL Kolkatta					0.96%
Madhya Pradesh					
POI with BSNL Level 2 TAX					
Bhopal POI OG	78.30%	54.08%	26.50%	24.27%	38.17%
Bhopal POI IC	60.50%	29.94%	43.11%	0.00%	0.00%
Dhar OG	1.65%	43.46%	35.39%	19.73%	20.11%
Damoh POI				1.93%	1.75%
Balaghat IC	0.00%	0.00%	0.00%	0.00%	0.00%
Balaghat OG	16.13%	11.48%	29.26%	42.22%	14.73%
Chhindwara OG	0.50%	3.53%	18.07%	30.37%	42.41%
Raigarh OG	7.01%	17.50%	14.34%	27.67%	27.41%
Raisen POI	1.00%	5.84%	11.98%	17.12%	17.86%
Narsingpur POI	1.09%	4.28%	9.09%	3.52%	0.15%
Seoni POI	2.60%	0.00%	NA	0.01%	0.02%
Chattarpur POI	29.70%	51.97%	67.58%	28.01%	33.37%
Rewa POI				1.71%	4.28%
Bhilai POI	22.20%	27.67%	6.75%	43.86%	9.02%
Bilaspur POI	4.99%	12.40%	30.31%	21.24%	25.92%
Raipur POI	36.29%	30.80%	21.37%	30.52%	41.45%
Betul OG		15.79%	0.80%	1.54%	0.00%
Morena POI	68.76%	66.76%	31.32%	15.15%	21.98%
Mandasore				0.59%	0.67%
Guna POI	6.72%	19.39%	41.75%	42.81%	0.65%
Shivpuri POI			2.63%	7.61%	8.87%
Gwalior POI			3.48%	0.56%	0.00%
Khandwa POI			2.27%	3.07%	0.00%
Vidhisa POI		3.25%	12.46%	25.52%	28.35%
Ratlam POI	5.96%	0.78%	0.00%	0.00%	0.00%

Sagar POI	18.05%	24.37%	52.05%	45.35%	61.24%
BSNL ILD	25.00%	0.12%	0.06%	0.29%	0.00%
Satna POI		0.64%	0.00%	0.09%	0.01%
Sahajanpur		2.42%	11.72%	29.96%	21.53%
Jhabua OG				7.32%	6.49%
Beora					9.77%
Khargone		47.52%	71.01%	75.60%	72.65%
Itarsi		0.73%	2.78%	4.35%	2.87%
Panna		26.55%	17.00%	0.00%	1.92%
Jabalpur		1.59%	9.86%	0.08%	0.06%
Ujjain					3.14%
POI with other operators					
Idea POI	2.00%	1.02%	3.28%	2.59%	1.86%
Reliance CDMA	4.28%	6.11%	9.56%	0.91%	1.61%
Reliance Fix	0.75%	0.06%	0.02%	NA	NA
Reliance GSM				3.96%	8.39%
BTSOL NLD	0.52%	0.00%	0.37%	0.00%	0.00%
BTNL Gwalior	0.00%	0.00%	0.00%	0.62%	0.84%
Maharashtra & Goa					
POI with other operators					
Bharti - Cellone	NA	27.32%	35.36%	32.42%	9.99%
BSNL - Cellone					28.26%
BSNL Nagpur ISD	19.59%	18.52%	9.68%	0.33%	20.30%
Bharti_ Idea	NA	55.57%	17.58%	21.34%	3.64%
Bharti Hutch Orange Mumbai OG	NA	20.34%	47.07%	69.97%	46.74%
Bharti Reliance Mumbai	NA	4.17%	3.67%	11.67%	7.94%
Bharti_Bharti Mumbai	NA	2.89%	75.06%	12.34%	9.05%
Tata Fixed	NA	0.64%	0.31%	2.30%	0.13%
Tata CDMA	NA	6.77%	0.09%	2.13%	9.81%
Tata CDMA Mumbai	NA	13.94%	0.01%	0.66%	0.05%
Reliance Fixed Line	NA	6.42%	1.26%	0.96%	0.50%
Reliance CDMA	NA	7.42%	0.07%	1.01%	7.10%
Reliance CDMA					1.66%
Bharti _ BPL				0.66%	1.99%
Idea Outgoing					2.14%
POI with BSNL Level 1TAX					
Pune Tax 1				84.31%	5.60%
Nagpur	25.02%	25.02%	11.55%	13.81%	6.65%
Sakkardara Tax		70.58%	11.55%	12.80%	NA
Bharti ILDO	0.00%	0.00%	0.00%	0.00%	NA
Jalgaon Tax			31.90%	NA	NA
Jalna			17.61%	NA	NA
Kolhapur			1.90%	NA	NA
Nasik			0.62%	NA	NA
Osmanabad			6.40%	NA	NA
Sawantwadi Tax			6.67%	NA	NA
POI with BSNL Level 2TAX					
Pune Model Colony	10.69%	24.13%	58.17%	NA	NA
Jalgaon	9.97%	12.64%	31.90%	31.90%	0.00%
Khamgaon	50.38%	NA	NA	22.88%	NA
Kalyan	18.29%	23.70%	3.84%	10.54%	1.70%
Latour OG				18.65%	9.97%
Aurangabad	14.67%	9.79%	6.48%		0.00%
Ahamad Nagar	NA	NA	NA		NA
Nanded		22.20%	6.95%	12.34%	0.00%

Beed		41.78%	26.74%	14.54%	7.44%
Dhule	42.77%	45.70%	38.34%	12.65%	0.00%
Solapur	14.64%	25.26%	0.03%	10.42%	0.00%
Kolhapur	15.05%	12.39%	15.92%	1.90%	1.00%
Nagar	20.61%	29.86%	11.79%	11.89%	5.00%
GOA	1.05%	0.28%	NA	0.00%	0.00%
Satara	3.08%	0.27%	0.09%	0.09%	0.66%
Sangli	16.75%	15.54%	0.00%	NA	0.79%
Jalna	55.60%	NA	17.61%	NA	8.47%
Nasik		0.90%	0.62%	0.62%	0.00%
Akola	1.66%	7.33%	2.32%	7.89%	0.96%
Amravati	42.79%	35.28%	17.77%	12.34%	1.59%
Chandrapur	9.64%	17.13%	6.33%	12.68%	0.00%
Wardha	5.59%	16.02%	12.34%	15.82%	7.04%
Yawatmal	33.13%	29.46%	NA	1.83%	2.36%
Savantwadi	17.17%	29.25%	37.25%	37.25%	14.10%
Bhandara	0.45%	5.40%	0.87%	0.00%	0.00%
Ratnagiri	60.98%	51.78%	37.25%	23.34%	7.55%
Osmanabad	23.31%	30.58%	7.12%	6.40%	10.20%
Nagpur			7.09%	13.81%	NA
Sakardara Nagpur			3.84%	NA	0.00%
Prabhani		4.99%	0.99%	16.59%	9.23%
Mumbai					
POI with MTNL Dolphin					
Bharti - Dolphin	0.00%	0.00%	0.00%	0.00%	0.00%
POI with MTNL level 1 TAX					
Fountain	0.00%	0.00%	0.00%	0.00%	0.00%
Thane	0.00%	0.00%	0.00%	0.00%	0.00%
POI With MTNL Tandem					
Cumballa level 3	0.00%	0.00%	0.00%	0.00%	0.00%
Ghatkopar level 5	0.00%	0.00%	0.00%	0.00%	0.00%
Vile Parle level 6	0.00%	0.00%	0.00%	0.00%	0.00%
SakiVihar level 8	0.00%	0.00%	0.00%	0.00%	0.00%
Mulund	0.00%	0.00%	0.00%	0.00%	0.00%
POI with TATA (Local)					
TATA CDMA total	0.90%	0.00%	0.00%	0.00%	0.00%
North East					
POI with other operators					
Reliance Guwahati				42.70%	NA
Reliance Telecom Shillong	0.00%	28.10%	0.00%	NA	8.10%
Shillong BSOL Kol NLD				21.20%	0.00%
POI with BSNL Level 2 TAX					
BSNL-STD/Local-Shillong-Home Subs OG	0.00%	0.00%	0.00%	89.60%	82.90%
Orissa					
POI with BSNL Level 1 TAX					
Cuttack	0.93%	7.29%	23.04%	7.93%	7.07%
POI with BSNL Level 2 TAX					
Bhawanipatna	2.29%	1.66%	3.23%	0.37%	0.17%
Angul	1.02%	0.00%	0.00%	0.06%	0.00%
Sabalpur					1.75%
Kotraput					8.98%
POI with other operators					
RTL GSM		6.27%	11.02%	24.72%	36.22%
BTSOL NLD		0.80%	0.67%	1.96%	0.00%

RILCDMA	10.24%	9.25%	9.81%	0.41%	0.03%
RIL ILT	0.00%	0.00%	0.00%	0.00%	0.00%
Punjab					
POI with BSNL Level 1 TAX					
Cellone			7.09%	9.30%	13.62%
JALANDHAR (Focal Point)	0.06%	2.17%	0.10%	0.00%	0.00%
JALANDHAR (MTS Nagar) local	0.69%	0.00%	0.00%	0.00%	0.00%
JALANDHAR (MTS ISD)	0.00%	0.00%	0.00%	0.00%	6.12%
POI with other operators					
AIRTEL (Broadband Jal)	0.00%	0.00%	0.00%	0.00%	0.00%
Spice, Mohali		1.40%	0.00%	0.00%	0.00%
Tat Cellular				2.23%	9.59%
Rajasthan					
POI with other operators					
Bharti - TATA	0.00%	0.00%		0.00%	0.00%
Bharti - Shyam Tele	0.00%	0.00%		0.00%	0.00%
POI with BSNL Level 1 TAX					
Jaipur	43.23%	0.00%	0.00%	0.00%	0.00%
Cellone			4.15%	4.21%	9.91%
POI with BSNL Level 2 TAX					
Ajmer	0.00%	0.00%	0.00%	0.00%	0.00%
Alwar	66.43%	78.12%	63.43%	79.57%	53.84%
Barmer	75.25%	79.32%	66.60%	70.93%	61.40%
Bharatpur	68.91%	81.71%	77.57%	71.56%	73.36%
Bhilwara	0.00%	0.00%	0.00%	0.00%	0.00%
Bikaner	38.28%	39.17%	0.00%	0.00%	0.00%
Bundi	35.58%	71.27%	77.61%	53.88%	0.00%
Chittorgarh	20.46%	28.47%	36.07%	43.38%	8.22%
Sriganganagar	6.15%	7.08%	0.60%	5.73%	1.21%
Jhalawar	58.32%	70.29%	64.80%	70.24%	0.00%
Jhunjhunu	52.44%	55.89%	63.63%	48.27%	0.00%
Kota	41.53%	43.35%	0.00%	0.04%	0.00%
Sirohi	88.38%	91.65%	88.14%	88.46%	89.40%
Sikar	75.81%	75.62%	82.81%	74.98%	0.27%
Tonk	22.17%	52.11%	62.23%	35.18%	57.75%
Udaipur	0.00%	0.00%	0.00%	0.04%	0.00%
SawaiMadhopur		25.59%	35.79%	23.70%	35.08%
Pali		8.64%	8.37%	55.30%	22.97%
Banswara			0.81%	3.93%	5.06%
Churu			85.22%	79.20%	89.11%
Jaisalmer		1.30%	20.77%	6.45%	0.00%
Nagaur				65.98%	87.58%
Tamil Nadu					
POI with BSNL Level 1 TAX					
Race Course TAX	4.12%	2.20%	6.18%	12.54%	0.00%
POI with BSNL Level 2 TAX					0.00%
Dharmapuri	6.80%	30.12%	38.32%	0.00%	0.00%
Ooty	0.00%	30.59%	30.59%	0.00%	0.00%
Tirunelveli	0.00%	0.00%	0.00%	0.00%	0.00%
Vellore	0.00%	39.50%	9.70%	8.36%	0.00%
Virudhnagar		21.50%	28.70%	14.18%	0.00%
Triticorin			3.70%	11.40%	0.00%
Cudalore		16.25%	0.00%	0.00%	0.00%
Coimbatore	0.00%	8.14%	12.00%	8.56%	0.00%

POI with other operators					
Aircell	0.00%	3.50%	0.00%	0.00%	2.00%
BPL	0.00%	0.00%	0.00%	0.00%	0.00%
Reliance GSM		8.25%	0.00%	0.00%	0.00%
Reliance Fix	0.00%	0.00%	0.00%	0.00%	0.00%
HUTCH Chennai - Outgoing	8.00%	8.00%	0.00%	0.00%	0.00%
Aircel Chennai - Outgoing	5.00%	18.20%	0.00%	0.00%	3.20%
Reliance Mobile -Chennai -Outgoing	0.00%	0.00%	0.00%	0.00%	0.00%
UP - East					
POI with FWPO/FWTO					
Bharti- Reliance	0.00%	0.00%	0.00%	0.00%	0.00%
VSNL				7.20%	0.00%
POI with other operators					
Bhart - Hutch	1.46%	9.50%	0.30%	1.50%	6.60%
Tata					5.10%
Bhart - Reliance	3.22%	36.20%	0.00%	0.00%	4.70%
Bharti_Idea	NA	38.80%	0.20%	0.10%	0.00%
POI with BSNL Level 1 TAX					
IndraNagar	NA	75.20%	26.00%	10.20%	NA
IndraNagar AXE	17.00%	NA	NA	NA	NA
KesharBagh	1.29%	0.00%	3.20%	NA	NA
Cellone			4.80%	26.90%	21.60%
POI with BSNL Level 2 TAX					
Barabanki	0.37%	45.10%	55.80%	0.00%	0.90%
Kanpur					2.60%
Basti	0.24%	59.90%	43.00%	37.84%	35.90%
Jhansi			1.90%	1.54%	0.00%
Faizabad	0.23%	38.20%	39.00%	26.91%	55.20%
Jaunpur	0.11%	92.30%	88.80%	83.15%	94.40%
Deoria	0.00%	67.10%	67.40%	38.46%	70.00%
Mirzapur	0.24%	84.20%	53.10%	26.63%	52.50%
PratapGarh	0.24%	78.90%	14.30%	68.98%	79.20%
AzamGarh	0.29%	53.00%	68.00%	17.12%	55.90%
Sitapur	0.17%	55.70%	51.30%	48.36%	72.50%
Sultanpur	0.13%	49.50%	0.60%	12.22%	5.60%
Varanasi	0.43%	17.90%	1.00%	10.66%	7.30%
Unnao					0.90%
Allahabad					2.40%
Farukhabad			54.60%	33.20%	65.00%
Gorakhpur	0.53%	37.40%	39.00%	3.66%	2.70%
Sahajahanpur	NA	1.10%	0.10%	3.11%	1.00%
Balia			22.20%	27.86%	51.70%
Fatehpur	NA	53.30%	62.20%	0.00%	0.00%
Hardoi	NA	17.40%	19.00%	1.33%	17.10%
Hamirpur	NA	1.90%	79.30%	56.89%	92.50%
Gazipur					0.90%
Gonda	NA	73.30%	0.00%	0.00%	0.20%
UP - West					
POI with BSNL Level 1TAX					
BSNL Level 1, Agra	5.70%	60.00%	19.80%	0.70%	0.00%
POI with BSNL Level 2TAX					
Meerut			19.30%	3.98%	1.50%
Bareilly	0.00%	0.00%	0.00%	0.00%	0.00%
Saharanpur	0.00%	0.00%	0.00%	0.00%	0.00%

Haldwani	0.01%	30.20%	23.30%	20.20%	65.70%
Moradabad	0.13%	46.60%	20.50%	25.96%	0.00%
Bijanore	0.00%	22.60%	8.20%	26.60%	30.80%
Mainpuri		16.60%	NA	0.00%	0.00%
Etah		0.60%	0.00%	0.00%	0.00%
Modinagar		59.60%	57.70%	66.12%	64.00%
Muzzafarpur		33.40%	1.30%	34.34%	25.00%
Badauyun	0.00%	0.00%	0.00%	0.00%	0.00%
Cellone					77.60%
POI with other operators					
Hutch		0.70%	0.00%	2.60%	5.00%
Tata				5.80%	1.90%
Reliance		4.10%	40.40%	44.96%	8.60%
Idea POI			0.90%	2.90%	0.00%
West Bengal					
POI with BSNL Level 1TAX					
Asansol			23.00%	0.04%	0.00%
POI with BSNL Level 2TAX					
Bankura			8.00%	0.00%	0.00%
Coochbihar					66.80%
Jalpaigudi					0.60%
Kharagpur					1.80%
Krishnanagar					1.90%
Cillone					1.50%
POI with other operators					
RTL CDMA WB					4.00%

POIs Congestion Reports of M/s Tata Teleservices & Tata Teleservices (Maharashtra) for the months of Jan, 2006 - May, 2006					
Name of POIs	Benchmark >0.5%				
	Jan	Feb	Mar	Apr	May
Delhi					
POI with BSNL					
Ghaziabad_Tandem	0.40%	0.80%	57.80%	0.00%	0.00%
Faridabad_Tandem	4.60%	7.90%	7.10%	1.10%	3.50%
POI with BSNL NLD					
Delhi_Rajendra Nagar TAX (Fix)	1.10%	0.30%	0.00%	0.00%	0.00%
Ghaziabad_TAX	62.70%	62.40%	0.00%	45.30%	37.10%
Gurgaon_TAX	0.00%	0.00%	0.00%	0.00%	0.00%
Faridabad_TAX	0.00%	0.00%	0.00%	0.00%	0.00%
Delhi_Rajendra Nagar TAX (Mobile)	4.90%	3.90%	0.60%	0.00%	0.00%
Delhi Extern Court Tax (Mobile)	4.70%	0.00%	0.00%	0.00%	0.00%
POI with Private Operators					
Delhi_RIL_AXE-10	0.00%	NA	0.00%	0.00%	NA
Gujarat					
POI with BSNL					
Sanad	0.00%	0.00%	2.84%	2.00%	2.00%
Gandhinagar	0.20%	0.00%	3.32%	1.00%	1.00%
Nadiad	3.80%	3.00%	2.17%	0.00%	0.00%
Godhara				9.00%	0.52%
Ankleshwar	0.00%	0.00%	0.00%	0.00%	0.00%
Valsad	34.10%	34.00%	2.66%	3.00%	0.00%
Bilimora	49.70%	41.00%	20.17%	10.00%	2.11%
Bhuj	1.10%	0.00%	1.24%	0.00%	5.15%

Surrendranagar	0.20%	0.00%	0.00%	0.00%	0.00%
Junagarh	0.00%	0.00%	0.00%	0.00%	0.00%
Gondal	1.30%	1.00%	2.65%	3.00%	1.38%
Porbandar	19.40%	26.00%	16.87%	10.00%	1.05%
Upleta	0.00%	1.00%	0.01%	0.00%	0.00%
Limbdi	0.00%	0.00%	2.50%	6.00%	0.00%
Morbi	0.00%	0.00%	0.00%	0.00%	1.45%
Veraval	27.90%	24.00%	10.49%	5.00%	2.93%
Jetpur	2.20%	2.00%	0.43%	0.00%	0.00%
Navsari	16.30%	4.00%	2.92%	6.00%	14.22%
Deesa	0.00%	0.00%	1.23%	0.00%	11.00%
Bhavnagar	0.00%	0.00%	0.00%	0.00%	0.00%
Ahmedabad_Bhadra TAX	0.10%	0.00%	0.00%	0.00%	0.00%
Junagarh Tax	4.60%	2.00%	0.00%	0.00%	0.00%
Anand Tax	5.60%	9.00%	0.00%	0.00%	0.00%
Surat_TAX	56.80%	19.00%	39.00%	2.00%	0.00%
Valsad TAX			23.00%	0.00%	0.69%
Rajkot KR - TAX	24.00%	0.00%		0.00%	0.00%
Bhuj Tax	40.00%	38.00%	24.00%	0.00%	0.00%
Baroda TAX	24.60%	24.00%	23.00%	0.00%	0.00%
Ahmedabad_Gulbaitekra TAX	0.00%	0.00%	0.00%	0.00%	2.12%
Idar	0.20%	0.00%	0.00%	NA	0.00%
Surat Tax Lucent NLD				1.00%	0.00%
Dwarka	0.00%	0.00%	0.00%	4.00%	2.70%
Bharuch Tax	2.20%	5.00%	0.00%	0.00%	0.00%
Halol	0.50%	0.00%	0.00%	0.00%	2.47%
Bhadra					1.00%
Bhuj Tax Fix					13.00%
POI with Private Operators					
Idea Ahendabad 1					2.00%
Idea Ahendabad 2					1.00%
Rajasthan					
POI with BSNL					
Jaipur L1 TAX Mobile NLD	71.00%	70.00%	53.00%	39.00%	53.07%
BSNL_Ajmer Mobile	2.00%	14.00%	19.00%	18.00%	18.52%
Bharatpur Mobile				4.00%	4.11%
Jaisalmer Mobile				1.00%	0.00%
BSNL_Jodhpur Fix	4.00%	11.00%	52.00%	8.00%	12.00%
Pali Local Fixed				3.00%	0.00%
BSNL L1 TAX_Jaipur_Fix	74.00%	76.00%	74.00%	67.00%	74.00%
Jaipur L1Bajaj Nagar NLD Traffic				26.00%	26.29%
BSNL_Naguar Mobile	5.00%	30.00%	22.00%	35.00%	21.99%
Alwar Mobile	19.00%	42.00%	10.00%	0.00%	9.65%
Bhilwara Mobile	34.00%	52.00%	50.00%	45.00%	50.36%
Chittorgarh Mobile					2.72%
Karnataka					
POI with BSNL					
Anekal Tandem	0.20%	0.10%	0.00%	0.00%	0.00%
Nalamangala Tandem		3.00%	30.30%	22.64%	17.10%
Bidar Tandem	0.00%	0.00%	0.00%	0.00%	0.00%
Tumkur TAX	24.50%	33.50%	39.80%	2.30%	0.30%
Bidar TAX	0.00%	0.10%	0.10%	0.30%	0.00%
Davangere TAX	38.00%	56.40%	62.50%	55.20%	61.00%
Gulbarga Tax	3.80%	14.00%	12.80%	11.90%	0.00%
POI with Private Operators					

Touchtel_Mangalore (HBL LE)	16.70%	19.90%	15.60%	14.20%	17.27%
Reliance Bangalore Tandem	2.50%	0.00%	0.00%	2.30%	14.30%
VSNL Mumbai					3.50%
Haryana					
POI with BSNL					
SONIPAT TANDEM	50.89%	60.00%	64.60%	60.76%	29.50%
Panipat Tandem		3.73%	0.00%	0.00%	0.00%
YAMUNANAGAR TANDEM	20.30%	56.40%	8.50%	3.44%	1.10%
AMBALA TAX(Fixed NLD)	75.45%	81.20%	75.05%	75.00%	73.30%
AMBALA TAX(Mobile NLD)	70.93%	0.00%	26.50%	NA	0.00%
KARNAL TAX(Fixed NLD)	20.71%	34.05%	52.20%	30.93%	30.93%
SONIPAT TAX(Fixed NLD)	77.34%	82.70%	82.00%	77.00%	39.00%
Jind Tax (Mobile Local)	38.41%	59.20%	0.00%	0.00%	0.00%
Rewari TAX Mobile	21.85%	46.60%	6.39%	0.22%	0.00%
VSNL NLD CMO Mobile NLD GSM		0.83%	0.00%	0.00%	3.60%
Cellone					15.11%
Punjab					
POI with BSNL					
Chandigarh Sec. 17 Tandem	7.20%	12.80%	0.00%	0.00%	0.00%
Chandigarh Sec. 34 Tandem	1.03%	1.09%	0.00%	0.00%	0.00%
Ferozpur Tandem	46.60%	51.30%	11.22%	3.94%	1.18%
Jalandhar Tandem				2.78%	0.00%
Kotkapuram Tandem				0.80%	0.00%
Nawanshar Tandem	89.00%	67.90%	56.45%	27.44%	20.00%
Patiala Tandem	3.05%	5.02%	0.00%	0.00%	0.00%
Rayya Tandem	0.90%	3.50%	0.97%	0.13%	0.00%
Rajpura Tandem	17.00%	21.60%	0.00%	0.00%	0.00%
Samarala Tandem		0.70%	0.10%	0.00%	0.00%
Amritsar TAX	7.60%	18.60%	24.20%	15.32%	9.00%
Chandigarh TAX	71.40%	73.10%	72.40%	73.06%	63.00%
Jalandhar TAX	32.40%	47.80%	56.70%	45.03%	39.00%
Jalandhar TAX Mobile NLD				25.30%	
Ludhiana TAX	0.00%	5.40%	10.20%	12.14%	8.00%
Patiala TAX	67.00%	72.00%	76.20%	79.81%	78.80%
Ropar Tax NLD Mobile		2.85%	3.03%	3.65%	4.00%
Chandigarh BTSOL GSM	NA	1.11%	0.00%	NA	NA
Chandigarh BTSOL Fixed	NA	16.20%	NA	NA	NA
Jalandhar Reliance NLD	0.00%	6.04%	5.84%	NA	NA
VSNL Jalandhar	NA	NA	NA	14.31%	NA
VSNL Jalandhar Fixed Mobile NLD	NA	NA	NA	7.43%	NA
Hoshiarpur Tax Mobile NLD	NA	NA	NA	1.06%	NA
Airtel KOL BSNL ILD	NA	NA	NA	NA	NA
TTSL WB	NA	NA	NA	NA	NA
Bihar					
POI with BSNL					
BSNL_Aarah (Fixed Local)	0.00	0.00%	0.00%	3.00%	0.00%
BSNL Aarah	0.00	0.00%	0.00%	0.00%	0.00%
BSNL Patna Roamer Old L1		29.00%		39.00%	24.97%
BSNL Patna Homer Old L2					64.12%
BSNL Patna Hoomer	17.00	12.00%	14.00%	18.00%	NA
BSNL_Jamsedpur	0.00		0.00%	0.00%	0.00%
BSNL_Patna NLD	16.88	17.92%		24.00%	84.47%
Patna Homer New L1	New POIs		93.00%	20.00%	74.40%
Patna Roamer New L1	New		13.00%	91.00%	24.20%

	POIs				
Hazaribag					1.60%
Darbhanga L2					34.33%
Gaya L2				29.00%	12.85%
POI with Private Operators/VSNL					
VSNL_Kolkatta	7.43	22.40%	13.33%	20.00%	20.78%
VSNL_Patna	0.00	0.00%	0.00%	0.00%	0.00%
Airtel (Mobile), Patana	10.88	0.00%	0.00%	0.00%	29.29%
AIRTEL, Ranchi, Fixed	0.00	15.28%	0.00%	0.00%	14.43%
AIRTEL, Ranchi, Mobile		7.02%	0.00%	2.00%	16.02%
Bihar sarif					17.02%
RIL Local	2.74	11.42%	0.00%	0.00%	0.00%
RTL Local	NA	13.64%	0.00%	10.00%	4.53%
VSNL Cuttack	0.17	0.00%	0.00%	0.00%	0.00%
UP - W					
POI with BSNL					
Agra Local (Fix)	58.10%	13.60%	0.00%	0.19%	1.49%
Dehradun Local (Fix)	87.50%	69.60%	0.47%	4.34%	46.66%
POI with BSNL- NLD					
Dehradun Tax (Fix)	75.60%	51.60%	8.10%	8.50%	61.00%
Moradabad Tax (Fix)	91.10%	90.90%	72.80%	0.00%	
Meerut Tax (Fix)	90.40%	80.70%	55.20%	0.00%	
Mathura Tax	2.50%	5.30%	0.00%	0.00%	
Bijnaur Tax					2.27%
POI with BSNL - Mobile					
Agra Tax (Cimo)-Sanjay Place	77.87%	49.00%	53.73%	0.00%	0.00%
Agra Tax (Cimo) - Tax Bhawan	61.16%	66.00%	70.59%	11.54%	0.00%
Agra Tax (Cimo-Roamer Only)	2.50%	4.33%	0.81%	0.55%	14.48%
Haldwani Tax				8.10%	14.34%
BSNL Moradabad Tax	0.00%	0.00%	0.00%	0.00%	0.00%
Modinagar Tax (Cimo)	0.00%	0.00%	0.00%	0.00%	4.13%
Rampur Tax					2.91%
POI with Private Operators/VSNL					
Airtel msc 1 mobile					6.65%
Airtel Mobile					1.15%
Airtel Fix					0.83%
Hutch (CIMO) GSM	0.00%	0.00%	0.00%	0.00%	0.00%
VSNL NLD Ambala	0.96%	0.06%	0.00%	0.00%	0.00%
BTSO NLD Fix		2.08%		0.00%	0.00%
BTSO Mobile NLD					
BTSOL NLD Noida	0.00%	0.00%	0.00%	0.00%	0.00%
Idea					10.57%
Tata					38.88%
VSNL Bhopal					5.31%
Andhara Pradesh					
POI with Private Operators					
Airtel, Hyd	0.00%	0.00%	0.00%	0.00%	0.00%
Hutch Hyd	0.00%	0.00%	15.80%	0.00%	0.00%
BTSOL NLD Hyd	0.60%	0.00%	0.90%	0.60%	0.00%
VSNL NLD Chennai Mobile	8.70%	5.50%	0.00%	0.00%	0.00%
POI with BSNL					
BSNL Kurnool	1.30%	0.80%	2.70%	6.40%	18.20%
BSNL Guntur L2	0.00%	0.00%	0.00%	17.30%	22.91%
BSNL Ananthapur	5.30%	1.70%	6.20%	5.10%	14.20%
BSNL Rajmundry L2	0.00%	0.00%	0.00%	11.90%	22.18%

Vizag L2				0.90%	0.00%
BSNL Nalgonda	24.50%	19.50%	25.70%	18.00%	13.60%
BSNL Karimnagar	17.60%	17.20%	18.60%	18.30%	10.50%
BSNL Khammam	0.70%	0.30%	0.00%	0.50%	0.60%
BSNL Mobile Mehboobnagar	6.90%	2.10%	2.30%	4.80%	3.30%
BSNL STD HYD		1.50%			NA
BSNL Eluru L-11	0.50%	0.00%	0.16%	0.20%	2.05%
BSNL Mobile Ongole L2	0.00%	0.00%	0.00%	0.00%	0.13%
BSNL Sangareddy	0.00%	0.00%	0.00%	0.00%	1.30%
Cucappah		2.50%	0.00%	0.00%	0.00%
UP - E					
POI with BSNL					
Lucknow	24.00%	17.74%	0.00%	0.00%	0.00%
Basti	14.00%	11.03%	0.00%	0.00%	0.00%
Sahajanpur				4.31%	5.32%
Gonda				3.01%	9.93%
Raibareilly					4.45%
POI with BSNL NLD					
Lucknow	56.00%	46.29%	25.10%	0.00%	0.00%
BSNL_Lucknow L1 Tax	16.00%	32.33%	20.36%	0.00%	8.32%
VARANASI	88.00%	85.49%	0.00%	1.66%	0.00%
BASTI	93.00%	89.69%	0.00%	0.00%	0.00%
MP & Chhattisgarh					
POI with BSNL					
Jabalpur_Tandem	6.51%	0.00%	0.00%	0.00%	0.00%
Raipur_Tandem	1.04%	1.00%	0.00%	0.00%	0.00%
Bilaspur_Tandem	6.39%	7.00%	3.20%	0.48%	0.20%
POI with BSNL - NLD					
Bhopal	6.02%	0.02%	0.61%	5.02%	13.70%
Jabalpur	6.27%	0.05%	0.00%	0.00%	0.00%
Raipur	2.55%	3.70%	0.00%	0.00%	0.00%
Indore	1.97%	0.06%	0.00%	0.00%	0.00%
Gwalior	16.00%	0.00%	0.00%	0.00%	0.00%
Bilapur L2	32.05%	32.70%	36.82%	0.54%	0.00%
Itarsi			1.80%	2.87%	0.00%
Maharashtra					
POI with BSNL					
Baramati				1.00%	1.00%
Himachal Pradesh					
POI with BSNL					
Shimla-TAX-FWP	51.73%	64.72%	64.36%	42.05%	0.00%
Kullu Tax	0.00%	0.00%	1.81%	0.00%	0.00%
Mandi Tax	0.00%	0.00%	1.32%	0.00%	0.00%
Hamirpur Tax Mob NLD				1.00%	5.00%
POI with other operators					
Reliance Local			2.55%	0.00%	0.00%
VSNL NLD			1.89%	0.00%	2.00%
Kerala					
POI with BSNL					
Thrissur	5.82%	3.27%	0.00%	0.00%	0.00%
Kottiyam	24.71%	8.06%	0.00%	0.00%	0.00%
Allepey	1.70%	0.31%	0.00%	0.00%	0.00%
POI with other operators					
Palakkad Fixed NLD	6.48%	4.42%	2.22%	0.00%	0.00%

VSNL, Ernakulam NLD	0.00%	0.00%	0.00%	0.00%	0.00%
Airtel_Kerala _ MSC-1	0.00%	0.00%	0.00%	0.00%	0.00%
Chennai VSNL,Kerela	0.00%	0.00%	0.00%	0.00%	0.00%
Chennai VSNL, Ernakulam	0.00%	0.00%	0.00%	0.00%	0.00%
Kolkata					
POI with BSNL					
Central OCB Tandem	NA		NA		NA
BSNL Sakia (mobile)	NA	44.37%	NA	31.09%	18.83%
BSNL COT(Mobile)	NA	32.55%	NA	NA	NA
BSNL COT Fix	NA	0.00%	36.22%	NA	NA
BSNL Sakia Fix	NA	34.72%	42.30%	15.32%	2.33%
BSNL SOT(Mobile)	NA	20.28%	16.36%	NA	NA
BSNL NOT(Mobile)	NA	10.53%	2.72%	NA	NA
POI with NLD Fixed Operators			NA	NA	NA
VSNL Kol		8.12%	9.24%	0.34%	0.16%
VSNL Bhopal		16.63%	69.35%	0.23%	3.15%
BTSOL Kol		1.63%	0.97%	NA	17.24%
RIL NLD		51.60%	2.53%	0.00%	12.60%
TBN EWSD Mobile					4.76%
TTSL Fixed Local Traffic					
BSNL SOT(Fixed)		1.85%	NA	NA	NA
BSNL HOT		1.11%	NA	NA	NA
TBN EWSD TANDEM		3.91%	5.09%	NA	11.79%
HUTCH WB		0.91%	5.49%	0.48%	3.16%
POI with Private Operators					
Airtel Kol (Mobile)	NA		0.00%	NA	0.00%
VSNL BHOPAL	NA	14.75%	NA	NA	NA
Airtel WB Fix	NA	0.01%	0.92%	NA	0.20%
Hutch Kol GMSC2	NA	0.00%	0.00%	NA	NA
RIL NLD	NA	1.40%	2.53%	NA	0.00%
RIL Local	NA	2.22%	6.05%	NA	NA
TTSL WB Local (Mobile)	NA	51.78%	23.24%	NA	22.83%
TTSL WB Local Fix local	NA	0.00%	NA	NA	1.49%
VSNL	NA	14.75%	NA	NA	NA
VSNL, KOL (Mobile)	NA	1.89%	NA	NA	NA
West Bengal					
POI with BSNL					
Asansol - NLD	5.60	2.20%	0.10%	0.00%	0.00%
Krishna Nagar - Mobile	0.00	0.00%	0.01%	0.00%	0.00%
Kharagpur	0.00	0.00%	0.00%	0.00%	0.00%
Krishna Nagar, NLD	0.00	0.00%	0.00%	0.00%	0.00%
Krishna Nagar, Fixed	1.75	2.45%	0.00%	0.00%	6.73%
Suri, Mobile	1.60	17.80%	0.00%	0.00%	0.00%
Suri, NLD, fixed	5.74	43.95%	0.00%	0.00%	0.00%
Suri, fixed					10.22%
Behrampur, Fixed Local	5.40	47.50%	0.50%	0.00%	0.00%
Behrampur NLD Fixed		0.65%	0.00%	0.00%	0.00%
Bolpur	1.10	0.00%	0.00%	0.00%	0.00%
Asansol - NLD Mobile		22.80%	0.10%	0.00%	2.30%
POI with Private Operators					
Airtel	0.00%	0.00%	0.00%	0.00%	NA
Hutch	0.00	0.00%	0.00%	0.00%	NA
Chennai					
POI with BSNL					
Anna Road Tandem(fix)	31.41%	4.16%	0.23%	0.17%	0.16%

KK Nagar Tandem(fix)	37.99%	5.38%	0.00%	0.20%	0.16%
Flower Bazar Tandem	34.78%	4.19%	0.24%	0.27%	0.21%
Kachipuram					16.43%
POI with Private Operators					
Aircel Coimbatore					10.43%
Airtel Coimbatore					1.35%
Tamilnadu					
POI with BSNL					
Cellone Coimbatore					NA
Kanchipuram	10.35%	18.71%	26.92%	14.22%	0.00%
Kumbakonam	5.17%	20.68%	0.00%	0.00%	0.00%
Virudunagar_Local	2.07%	5.58%	0.00%	0.00%	0.00%
Coimbatore Tax NLD		0.70%	0.00%	0.64%	0.64%
POI with BSNL NLD					
Dharmapuri_TAX	26.85%	0.00%	0.00%	0.00%	0.00%
Virudunagar_TAX	1.64%	1.51%	0.00%	0.00%	0.00%
ERODE_Tax		0.00%	0.00%	0.00%	0.00%
POI with Private Operators					
Aircel Coimbatore Fixed	0.72%	12.87%	14.54%	5.73%	13.85%
Aircel Coimbatore Mobile				1.53%	7.60%
Bharti Local Madurai		0.00%	0.00%	0.00%	0.00%
Reliance Coimbatore		0.00%	0.00%	0.00%	0.00%

POIs congestion Report of M/s Reliance Infocom Limited for the months of Jan, 2006 - May, 2006					
Service area and POIs	Benchmark >0.5%				
	Jan	Feb	Mar	Apr	May
Madhya Pradesh					
POI with BSNL					
Bhopal	3.30%	5.70%	17.20%	20.70%	15.40%
Bilaspur	5.10%	7.20%	10.20%	9.60%	7.20%
Raigarh					15.90%
Betul	13.90%	10.80%	0.00%	0.00%	0.00%
Jhabua	0.80%	2.50%	2.40%	0.00%	0.00%
Raipur	10.40%	11.00%	15.70%	12.00%	0.00%
Shahdol	18.10%	24.70%	22.50%	11.90%	12.10%
Itarsi	2.90%	5.40%	0.10%	0.00%	0.10%
Morena	7.60%	11.20%	16.10%	21.80%	0.00%
Dhar		1.90%	3.80%	0.00%	0.00%
Khandwa		1.90%	3.30%	5.60%	6.80%
Sanguja, Ambikapur			14.70%	12.50%	17.40%
Basic POIs					
Bhopal				3.60%	4.00%
Damoh					0.90%
Durg					100.00%
Indore				100.00%	0.00%
Narsingpur				51.10%	60.90%
Rewa				6.90%	0.10%
POI with other Operators					
Idea	5.00%	5.10%	2.80%	6.30%	2.60%

Bharti		4.30%	0.00%	0.40%	0.00%
RTL	0.00%	0.00%		0.00%	0.00%
Andhra Pradesh					
Basic POIs					
Andole					1.20%
Annakapalle				2.00%	0.00%
Armoor				29.30%	31.40%
Chivela					1.30%
Huzurabad					2.60%
Hyderabad				12.70%	11.10%
Karimnagar					0.70%
Ibrahampatnam				0.60%	0.00%
Kurnool				2.20%	13.30%
Mulug					1.00%
Narasampet				9.40%	10.60%
Narsaraopet					2.40%
Pargi				2.50%	8.30%
Peddapalli				2.80%	3.20%
Repalle					1.50%
Siddipet				1.00%	2.30%
Vijayawada					0.90%
Vikrabad				24.70%	0.80%
POI with BSNL					
MAHABUBNAGAR	23.10%	9.10%	4.50%	6.30%	6.20%
Kurnool	0.00%	0.00%	0.00%	0.50%	2.10%
NALGONDA	0.00%	0.00%	0.00%	0.00%	0.00%
Vijayagram					8.70%
Hyderabad L1 TAX 1	10.20%	6.10%	0.00%	0.00%	0.00%
Sangareddy	19.70%	13.70%	0.30%	0.20%	0.10%
Adilabad	0.70%	1.10%	0.00%	6.80%	0.00%
Srikulam	4.10%	0.00%	0.00%	0.00%	0.00%
POI with other Operators					
Idea	0.10%	0.30%	1.30%	0.30%	0.80%
Bharti	0.00%	2.00%	0.00%	0.70%	1.80%
Hutch			0.90%	0.00%	0.00%
Bihar					
POI with BSNL					
Darbanga	12.50%	7.20%	9.70%	0.90%	2.30%
GAYA	0.00%	0.00%	0.00%	0.00%	0.00%
Patna	20.50%	27.50%	6.80%	5.00%	1.40%
Chhapra	0.80%	0.00%	0.00%	0.00%	0.00%
Patliputra L2 Tax					8.60%
Patna Rajendra Nagar L1 Tax					1.70%
Cellone					18.10%
Basic POIs					
Darbanga					1.00%
Nawada				1.00%	0.01%
POI with other Operators					
RTL	5.20%	3.60%	0.00%	0.00%	0.01%
Tata	1.00%	7.00%	0.00%	0.00%	0.01%
Bharti	3.70%	5.10%	0.30%	2.80%	4.80%
Karnataka					
POI with BSNL					
BELGAUM	30.90%	0.00%	0.00%	0.30%	0.70%

Bijapur	9.40%	0.00%	0.00%	0.00%	0.00%
cellone				4.60%	5.50%
Basic POIs					
Bangerpet					0.70%
Bhatkal					2.10%
Bijapur					0.80%
Chanaryapatna					5.70%
Gokak				4.60%	8.10%
Goribindnur					0.60%
Haveri					1.10%
Hublie				1.70%	0.60%
Kolar				1.50%	6.00%
Kolegal					1.00%
Kunigal					10.50%
Malavalli				0.60%	0.00%
Sidlaghatta				0.70%	0.60%
Shorapur					5.10%
Tumkur				2.50%	4.20%
POI with other Operators					
Hutch	0.00%	0.00%	0.00%	0.00%	
Kerala					
POI with BSNL				8.30%	7.20%
Cellone					
Basic POIs					
Alathur				1.50%	4.80%
Ernakulam					0.60%
Mannarghat					1.50%
Shoranampur				26.90%	35.40%
Uppala				12.10%	14.40%
Maharashtra					
POI with BSNL					
Akola				1.10%	0.00%
AMRAVATI	39.40%	14.30%	15.30%	16.40%	11.60%
BULDHANA	42.00%	54.10%	60.50%	10.00%	31.80%
Dhulia	13.70%	29.70%	8.20%	12.00%	0.00%
Bhir		4.20%		0.00%	0.00%
Jalgaon	2.40%	10.20%	10.70%	12.20%	4.70%
JALNA	0.00%	0.00%	0.30%	0.70%	1.20%
Latour	4.20%	0.00%	0.00%	0.20%	1.20%
Wardha					1.70%
Nagpur sakardara L1 TAX			0.60%	0.90%	0.00%
RATNAGIRI	27.10%	0.00%	0.00%	0.00%	0.00%
Sangli	3.80%	13.30%	11.30%	17.50%	0.00%
Prabhani	2.40%	0.20%	1.60%	1.60%	0.00%
Yavatmal			0.90%	5.90%	9.30%
Cellone					9.10%
Basic POIs					
Ahamednagar				58.80%	0.80%
Akola				1.10%	0.20%
Alibagh					0.60%
Barsi				0.60%	0.00%
Bhusawal				1.10%	0.00%
Chiplun				1.40%	0.30%

Hinganghat					19.10%
Jalgaon				13.30%	8.80%
Jalna				51.20%	0.10%
Kalyan				15.00%	0.30%
Khopoli				1.50%	0.00%
Kopargaon				28.00%	0.10%
Latour				35.30%	2.40%
Naded				32.40%	0.00%
Niphad					7.10%
Pandharpur					2.60%
Panji				3.50%	0.60%
Prabhani					0.80%
Pune				1.20%	95.40%
Pune					0.60%
Rahuri				1.00%	0.80%
Rajgurunagar				4.50%	3.90%
Ratanagiri				3.30%	0.00%
Sangamner				30.60%	1.90%
saswad				3.60%	1.50%
Shrirampur				17.90%	0.00%
Wai				5.50%	4.00%
Wardha				1.00%	1.30%
Yavatmal					0.70%
POI with other Operators					
BPL	2.90%	0.00%	0.00%	0.00%	0.00%
Idea	0.00%	0.00%	0.00%	0.80%	0.00%
Bharti				2.70%	0.20%
Orissa					
POI with BSNL					
Cuttack	0.00%	1.80%	2.00%	4.20%	0.00%
Behrampur	0.00%	0.00%	0.60%	4.40%	0.10%
Cellone					2.80%
Basic POIs					
Balasore				37.00%	47.80%
Balasore, B30				78.60%	83.50%
Behrampur				71.40%	64.70%
Bhadrak				77.90%	74.40%
Bhuvneshwar				1.60%	1.30%
Chhatrapur				7.70%	10.70%
Dhanmandal					2.00%
Jajpur town				48.60%	57.50%
Khurda				8.00%	4.40%
Puri				1.80%	15.50%
Sambalpur				39.30%	32.80%
Soro				6.50%	2.70%
POI with other Operators					
Bharti	14.30%	7.90%	0.00%	0.00%	0.10%
RTL	0.00%	0.00%	0.00%	0.00%	0.00%
Aircel			7.20%	15.30%	0.10%
Rajasthan					
POI with BSNL					
ALWAR	42.40%	17.60%	7.50%	7.10%	3.20%

CHITTORGARH	0.00%	0.00%	0.00%	0.00%	0.00%
JAIPUR	8.90%	4.80%	1.10%	0.70%	0.80%
Tonk	2.00%	4.10%	5.00%	0.60%	3.20%
Basic POIs					
Ajmer				5.20%	3.50%
Alwar				82.40%	80.90%
Chittorgarh				4.90%	0.60%
Churu				100.00%	NA
Jhalawar				4.10%	3.50%
Jhunjhunu				4.40%	0.80%
Jhunjhunu					1.20%
Kotputli				1.10%	0.70%
Nagaur				2.60%	2.50%
Sikar				1.40%	0.90%
Sikar					1.00%
Tonk				2.70%	0.00%
Tamilnadu					
POI with BSNL					
Thanjavur	0.00%	0.00%	0.00%	0.00%	0.00%
Coimbatore	2.80%	4.40%	0.80%	0.00%	0.00%
Cellone				19.10%	16.50%
Basic POIs					
Ariyaloor				1.10%	0.00%
Coimbatore				69.10%	46.40%
Coimbatore, B20				26.30%	4.50%
Hasur				1.20%	1.50%
Kallkuruchi				15.20%	14.30%
Mannarguri				1.20%	0.00%
Mettupalayam				3.10%	1.50%
Ootacamund				0.60%	0.10%
Palacode				0.60%	0.00%
Palladum					0.70%
Pappanasam					3.00%
Pattukotaya					0.80%
Perundurai					0.60%
Paramblure				11.30%	10.60%
Rajapalayam				1.10%	2.60%
Thiruthani					1.00%
Thiruraipundi				6.20%	2.60%
Vallyoor				0.60%	0.00%
Vellore				68.50%	53.10%
Virudhachalam				1.80%	3.00%
POI with other Operators					
Aircel	1.40%	0.00%	0.00%	0.10%	0.00%
Bharti	3.50%	3.40%	0.00%	0.00%	0.00%
UP - E					
POI with BSNL					
AZAMGARH	67.50%	5.90%	13.30%	12.20%	21.20%
Faizabad	7.10%	22.40%	19.20%	8.60%	8.90%
Barabanki	4.30%	13.20%	15.30%	8.20%	7.20%
Pratapgarh	10.30%	15.80%	27.10%	14.10%	30.40%
Lucknow L1 TAX Indira Nagar	8.00%	11.70%	4.30%	5.40%	3.90%
LUCKNOW L1 TAX Kiserbagh	24.70%	12.10%	1.80%	0.00%	0.90%
Lakhimpur Khiri	27.10%	35.70%	49.50%	30.00%	11.10%

Basti	0.00%	0.80%	1.40%	2.70%	1.60%
Gazipur					1.20%
Hardoi					9.60%
Balia					3.10%
Cellone				27.50%	66.50%
Basic POIs					
Allahabad				3.60%	1.00%
Azamgarh				1.70%	0.20%
Bhadohi					100.00%
Kanpur				100.00%	0.00%
Kanpur, B0				3.20%	0.00%
Mirzapur					2.20%
Shahajahanpur				1.50%	42.20%
Shahajahanpur, B30				16.80%	3.80%
Varanasi					3.00%
Varanasi					1.30%
POI with other Operators					
Bharti	0.50%	0.60%	1.00%	1.10%	1.30%
Hutch		0.60%	4.50%	1.10%	0.40%
Tata					1.30%
UP - W					
POI with BSNL					
Agra	2.10%	1.90%	2.90%	1.20%	11.70%
Bareilly	0.00%	0.00%	0.00%	0.00%	0.00%
ETAH	0.00%	0.20%	1.20%	0.90%	0.00%
NAINITAL	34.80%	30.00%	35.90%	35.00%	51.40%
Moradabad				2.10%	0.00%
Cellone				2.00%	9.50%
Basic POIs					
Amroha				42.20%	0.00%
Bareilly				19.30%	0.00%
Chhata				0.60%	0.30%
Dehradoon					1.50%
Deoband				8.90%	2.00%
Haldwani				47.40%	13.80%
Janasat , Khatauli				100.00%	0.00%
Meerut				70.20%	67.00%
Meerut, B30				1.60%	0.00%
Modinagar				1.10%	0.50%
Moradabad				37.60%	5.20%
Rampur				4.30%	0.60%
Rampur, B30				1.00%	0.00%
Shaharanpur				10.60%	0.00%
POI with other Operators					
Bharti		6.90%	7.40%	7.60%	0.10%
Escotel	0.00%	0.00%	0.00%	2.40%	0.20%
Hutch	1.10%	5.20%	10.10%	7.20%	0.10%
West Bengal					
POI with BSNL					
Suri (Bolpur)	0.00%	0.00%	0.00%	0.00%	0.10%
Behrampur		1.10%		4.40%	0.10%
Asansol	8.70%	6.80%	6.00%	1.80%	0.00%
Bankura				1.70%	2.70%

Cellone					2.30%
Basic POIs					
Bankura				18.40%	2.40%
Basirhat				59.80%	36.30%
Bongaon				25.00%	49.60%
Burdwan				29.00%	45.30%
Calcutta					100.00%
Calcutta					0.70%
Calcutta					29.30%
Gangtok					46.70%
Gangtok					26.20%
Jalpaigudi				4.00%	0.30%
Jalpaigudi, B70				100.00%	0.00%
Kharagpur				3.50%	0.00%
Krishnanagar				1.30%	0.20%
Krishnanagar, B30				54.10%	0.00%
Siliguri					0.70%
POI with other Operators					
Hutch	0.00%	0.10%	0.50%	0.00%	2.20%
Tata	1.70%	0.00%	0.30%	1.90%	0.10%
Delhi					
POI with other Operators					
Tata	No Cong	No Cong	No Cong	0.80%	0.00%
Gujarat					
POI with other Operators					
Hutch	No Cong	No Cong	No Cong	2.00%	0.00%
Basic POIs					
Ahamedabad Gandhinagar					4.30%
Amod				5.60%	6.10%
Anand					100.00%
Bharuch				100.00%	0.00%
Deesa				1.30%	0.70%
Jamnagar				19.40%	10.90%
Kapadwanj				1.10%	1.70%
Mahuva					1.30%
Khambhat				1.40%	0.20%
Mehmadabad				1.00%	0.80%
Modasa				0.60%	0.20%
Navsari					55.70%
Patan				0.70%	0.60%
Porbander				2.00%	0.00%
Rajkot				55.70%	0.00%
Sohor				1.90%	0.40%
Chennai					
POI with BSNL					
Chennai Cellone				4.10%	2.20%
Ard Tandem BSNL - GSM	2.10%	0.00%	0.00%	0.00%	
Basic POIs					
Bhavani					1.20%
Dharampuri					100.00%
Panipet					0.90%
Chennai				0.90%	0.10%
Cuddalore				1.10%	0.00%

Kachipuram				1.20%	0.10%
Kachipuram B3JKCHO				100.00%	0.00%
POI with other Operators					
Bharti	0.00%	0.00%	0.00%	0.00%	0.00%
Mumbai					
POI with BSNL					
Fountain G			1.10%	0.00%	0.00%
Bhayander					0.90%
Basic POIs					
Mumbai A00				19.10%	37.70%
Mumbai A20				2.40%	0.00%
Mumbai A21				1.10%	0.00%
POI with other Operators					
Hutch		1.20%	0.00%	0.00%	0.90%
Bharti	0.00%	0.20%	0.00%	0.00%	0.00%
Haryana					
POI with BSNL					
Jind					1.10%
POI with other Operators					
Idea	0.00%	0.00%	0.00%	0.00%	0.00%
Basic POIs					
Charkhidadri				2.00%	0.00%
Fatehabad				1.10%	1.00%
Jhajjar				1.00%	0.40%
Kurushetra				0.80%	0.00%
Rewari				1.90%	0.00%
Punjab					
POI with other Operators					
Hutch	0.00%	1.40%	0.00%	0.00%	0.00%
Cellone				13.50%	12.60%
Basic POIs					
Ludhiana				100.00%	0.00%
Hoshiarpur					100.00%
Ropar				1.10%	0.10%
Sunam					1.60%
Tarantaran					100.00%
Himachal Pradesh					
POI with BSNL					
Shimla	9.70%	18.20%	12.80%	15.30%	12.70%
Kangra, Dharamshala			3.50%	4.80%	8.00%
Kolkatta					
POI with other Operators					
Tata		2.80%	0.00%	0.00%	0.00%
Hutch	0.70%	0.00%	0.00%	0.00%	0.00%

POIs Congestion Report of M/s Reliance Telecom Limited for the months of Jan, 2006 - April, 2006

Name of Circle & POIs	Benchmark >0.5%				
	Jan	Feb	Mar	Apr	May
Madhya Pradesh					
BHOPAL	35.00%	34.74%	41.00%	42.50%	41.60%

UJJAIN	0.20%	0.08%	0.03%	0.00%	0.02%
KHARGONE	8.00%	15.65%	23.10%	13.90%	11.20%
CHINDWARA	0.50%	0.78%	0.93%	0.00%	0.00%
DURG	0.03%	0.18%	0.10%	0.14%	0.41%
BALAGHAT	1.52%	8.77%	1.32%	0.00%	0.00%
Guna	0.90%	0.42%	0.38%	0.15%	0.21%
Khandwa	0.30%	2.77%	6.22%	5.37%	0.00%
Dhar	NA	0.75%	0.83%	1.42%	2.66%
Itarsi	1.20%	0.96%	1.55%	0.39%	1.01%
Vidisha					0.56%
Satna	0.00%	0.84%	0.04%	0.12%	0.25%
Betul	0.40%	1.42%	2.63%	0.00%	0.00%
Seon	0.00%	1.80%	0.08%	0.08%	0.00%
Raipur	0.03%	1.24%	1.30%	20.48%	25.20%
Bilaspur	0.36%	1.45%	1.92%	0.15%	0.15%
POI With other Operators					
Idea Cellular, Raipur	4.91%	23.66%	16.10%	3.60%	7.65%
Airtel Mobile, Indore	1.00%	0.70%	16.30%	3.90%	0.00%
Idea , Indore	4.60%	13.73%	0.40%	4.20%	0.00%
Airtel Fix, Indore	No Cong		2.30%	2.90%	2.30%
Bihar					
PATNA	3.51%	3.57%	3.57%	3.91%	3.93%
GAYA	22.02%	22.13%	5.35%	5.76%	0.00%
MUZAFFARPUR	0.00%	0.00%	0.00%	0.00%	0.00%
BHAGALPUR	21.78%	22.01%	22.01%	22.43%	22.47%
DARBHANGA	6.43%	6.49%	6.49%	6.97%	0.00%
SAHARSA	46.11%	46.23%	46.23%	47.93%	47.71%
MOTIHARI	37.08%	37.26%	37.26%	38.19%	37.88%
MUNGER	0.00%	0.00%	0.00%	0.00%	0.00%
JAMSHEDPUR	0.00%	0.00%	0.00%	0.00%	0.00%
DHANBAD	0.00%	0.00%	0.00%	0.00%	0.00%
HAZARIBAGH	0.00%	0.00%	0.00%	0.00%	0.00%
POI With other Operators					
Ranchi, MSC RIC		0.00%	0.00%	0.00%	0.00%
Airtel local	0.00%	2.53%	0.00%	0.00%	0.00%
Tata walky	0.00%	7.01%	1.81%	1.87%	1.79%
Tata Fix	2.25%	5.23%	2.23%	2.33%	2.21%
West Bengal					
COOCHBEHAR	0.69%	0.57%	0.01%	0.01%	0.00%
Kharagpur	0.00%	0.00%	0.00%	0.00%	0.00%
Gangtok	0.00%	0.00%	0.00%	0.00%	0.00%
RAIGANJ	0.00%	0.00%	0.00%	0.00%	0.00%
ASANSOL	0.04%	0.00%	0.00%	1.65%	13.97%
Himachal Pradesh					
SHIMLA	18.16%	23.18%	35.56%	37.03%	37.59%
SOLAN	0.80%	2.08%	11.79%	14.47%	15.01%
Mandi					0.68%
DHARAMSHALA	23.84%	32.20%	35.40%	34.08%	35.16%
HAMIRPUR	29.07%	35.73%	39.06%	39.24%	38.60%
POI With other Operators					
Airtel Shimla					0.74%
Assam					
BSNL GUWAHATI	1.42%	0.04%	0.04%	0.00%	0.00%

BSNL Jorhat	1.34%	0.00%	0.01%	0.10%	0.20%
BSNL Nagaon	16.94%	51.96%	49.36%	56.10%	47.40%
BSNL Tezpur	46.81%	78.24%	81.12%	1.40%	72.90%
Dhibrugarh	45.29%	68.40%	54.86%	2.30%	6.00%
POI With other Operators					
RIL				0.80%	0.00%
Airtel Guwahati	21.48%	1.34%	0.07%	0.00%	0.80%
Aircel Guwahati	0.28%	1.68%	3.23%	0.00%	0.30%
North East					
Shillong BSNL	0.44%	16.71%	24.32%	43.77%	40.94%
Agartala				0.89%	0.00%
POI With other Operators					
Airtel Shillong	34.28%	64.15%	82.03%	17.41%	17.85%
Reliable Internet Services Ltd, Kolkatta					
POI With other Operators					
RTL Durgalpur					53.00%

POI Congestion Report of M/s Idea Cellular Limited for the months of Jan, 2006 - May, 2006					
Name of POIs	Benchmark >0.5%				
	Jan.	Feb	Mar	Apr	May
Madhya Pradesh					
Idea - BSNL					
Bhopal	28.45%	24.56%	28.56%	30.53%	28.58%
Ujjain					6.89%
Dewas					9.73%
Khargone	66.00%	72.98%	73.03%	72.67%	72.82%
Dhar					11.74%
Shahjapur	51.32%	65.82%	78.62%	79.88%	80.73%
Sagar	2.49%	17.82%	21.26%	28.75%	37.67%
Raipur	40.11%	9.42%	0.00%	37.20%	29.11%
Rewa	1.81%	7.97%	4.19%	12.40%	7.40%
Morena	34.88%	40.03%	34.81%	52.97%	54.87%
Khandwa	26.88%	33.44%	42.45%	36.10%	3.75%
Biora	4.72%	8.56%	19.74%	29.51%	36.85%
Raigarh	2.12%	5.81%	0.00%	0.00%	0.00%
Narsingpur	16.47%	21.63%	27.45%	37.14%	47.06%
Shahdol	51.92%	58.37%	57.42%	55.57%	65.33%
Itarsi		5.74%	2.18%	0.00%	4.76%
Betul		0.66%	0.00%	0.00%	24.57%
Ambikapur		19.72%	11.74%	18.26%	27.91%
Satna		12.91%	3.21%	0.00%	13.89%
Damoh		3.63%	0.00%	0.00%	0.00%
Sidhi		4.25%	10.75%	25.65%	20.80%
Andhra Pradesh					
(i) BSNL					
Adilabad					1.31%
KURNOOL	27.13%	34.20%	0.00%	0.00%	0.00%
MAHABOONAGAR	0.00%	0.08%	0.05%	0.00%	2.19%
NALGONDA	10.50%	2.46%	0.00%	0.00%	0.00%
CUDDAPAH	0.00%	NA	NA	NA	NA
OCB Secunrabad TAX	4.45%	2.20%	0.22%	0.43%	1.90%

Maharashtra					
Idea - BSNL					
Ahmednagar	1.07%	4.66%	0.00%	0.02%	0.23%
Akola			1.24%	2.30%	1.69%
Sangli	1.95%	5.58%	0.24%	1.15%	2.84%
Jalna	0.00%	0.00%	0.01%	0.09%	0.00%
Nagpur	0.00%	0.00%	0.09%	0.23%	0.00%
Ratnagiri	0.00%	0.00%	0.00%	0.00%	0.00%
Pune	0.12%	0.84%	2.61%	0.31%	0.20%
Amravati		1.33%	0.00%	0.00%	0.01%
Satara		1.55%	4.51%	3.91%	0.45%
Khamgaon				3.90%	4.20%
POI with private operators					
Airtel	0.00%	6.53%	0.00%	0.14%	0.00%
Delhi					
POI with NLD operators					
BSNL	0.00%	0.00%	0.00%	0.00%	0.78%
BTSOL	0.00%	0.00%	0.00%	0.00%	0.67%
Gujarat					
Idea - BSNL					
ANAND	0.00%	0.00%	0.00%	0.00%	0.00%
Mehsana	0.00%	2.55%	0.00%	0.00%	0.00%
Himmatnagar	0.00%	0.00%	0.00%	0.00%	0.00%
AMRELI	12.30%	0.00%	0.00%	0.00%	0.00%
Ahamdabad GBT	5.38%	6.48%	0.00%	0.00%	0.00%
POI with private operators					
Idea VSNL NLD	4.53%	0.00%	0.00%	5.40%	0.00%
Idea_Airtel Rajkot	0.00%	0.00%	0.00%	0.00%	0.00%
Idea _ BTSOL NLD Gandhngr		10.50%	0.00%	0.00%	0.00%
Kerala					
BSNL					
Alleppy	0.00%	0.00%	0.00%	0.00%	0.00%
Kannur	0.00%	0.00%	NA	0.00%	0.00%
BSNL NLD	0.00%	0.10%	0.03%	3.09%	5.01%
Tiruvalla	0.39%	0.64%	0.00%	0.00%	0.00%
Ernakulam	12.65%	10.02%	4.38%	1.80%	7.96%
Jkollam					1.28%
Pallakad		0.77%	0.00%	0.37%	1.89%
UP(W)					
Idea - BSNL					
Mainpuri	0.00%	0.00%	0.00%	0.00%	0.00%
Modinagar	6.03%	NA	0.00%	0.00%	0.00%
Bijnaur	35.91%	39.90%	0.00%	0.00%	0.00%
Pilibhit	15.48%	18.66%	15.84%	0.25%	0.00%
Haldwani	0.00%	4.97%	2.15%	0.02%	0.00%
BSNL NLD Agra	0.00%	1.52%	0.00%	0.01%	0.00%
Haridwar	0.48%	0.00%	0.00%	0.00%	0.00%
POI with private operators					
Agra NLD	1.17%	0.90%	0.00%	0.00%	0.01%
Airtel - UPE	1.08%	9.44%	0.01%	0.00%	0.00%
Relaince	0.00%	0.00%	0.00%	0.00%	0.00%
Haryana					
POI with BSNL					
Gurgaon	3.38%	0.00%	0.00%	0.00%	0.00%

Sonepat	12.75%	18.78%	21.48%	1.53%	0.77%
Ambala Lvele 1 TAX	1.59%	6.62%	17.21%	7.21%	5.33%
Ambala Lvele 1 TAX (2)				7.28%	2.33%

POI Congestion Report of M/s Hutchisson Essar Mobile Services Limited for the month of Jan, 2006 - May, 2006

Name of Circles & POIs	Benchmark >0.5%				
	Jan	Feb	Mar	Apr	May
Andhara Pradesh					
Hutch_ Idea	0.00%	0.00%	0.00%	0.00%	0.00%
Hutch_ Airtel	0.03%	1.27%	0.00%	0.00%	0.00%
Punjab					
POI with BSNL					
JALANDHAR	59.99%	0.00%	0.00%	0.00%	0.00%
Ropad	0.87%	0.33%	0.06%	0.00%	0.00%
Hoshiarpur	2.58%	1.27%	0.00%	0.00%	0.00%
Cellone BSNL				0.77%	0.11%
POI with Private Operators					
Spice, Jalandhar	0.23%	4.51%	0.00%	0.00%	0.00%
Spice, Chandigarh	0.33%	3.39%	0.00%	0.00%	0.00%
Gujarat					
POI with BSNL					
Aamreli	10.19%	81.78%	52.10%	62.49%	12.40%
Bhavnagar	2.14%	48.34%	0.00%	0.00%	0.00%
Mehsana	2.25%	58.37%	7.76%	21.29%	4.01%
Palanpur	10.81%	70.53%	89.59%	63.19%	56.25%
Godhra		4.87%	6.53%	5.47%	0.00%
Himmatnagar		35.30%	74.28%	87.16%	27.38%
Jamnagar		12.15%	23.14%	36.83%	17.64%
Surendernagar		3.57%	7.08%	0.00%	0.00%
Junagarh				5.46%	1.25%
Rajasthan					
POI with BSNL					
Sri Ganganagar	2.74%	1.55%	3.34%	5.06%	26.61%
Alwar	20.83%	16.49%	26.02%	38.64%	41.26%
Jhunjhunu			3.61%	9.13%	10.37%
Sirohi	33.24%	31.22%	54.35%	70.26%	67.69%
Nagaur	66.90%	69.45%	43.51%	57.69%	0.00%
Sw Madhopur	22.13%	26.85%	0.00%	4.00%	1.71%
Bharatpur	15.65%	40.15%	33.05%	17.69%	26.05%
Churu	0.00%	0.00%	0.00%	0.00%	0.01%
Sikar	6.00%	5.89%	26.92%	9.00%	0.00%
Jaipur	6.76%	0.00%	0.00%	0.00%	0.00%
Bikaner	1.20%	1.79%	0.62%	0.97%	2.73%
Jaisalmer				2.65%	25.57%
Barmer				15.23%	26.29%
UP East					
POI with BSNL					
Lucknow	49.00%	58.00%	47.00%	43.00%	27.00%
Sahajanpur		23.00%	19.00%	22.00%	3.00%
Faizabad	0.00%	0.00%	0.00%	0.00%	0.00%
Orai	0.00%	3.00%	25.00%	91.00%	0.00%
Gonda				32.00%	0.00%

Basti			4.00%	3.00%	5.00%
Baharaich				40.00%	12.00%
Pratapgarh	0.00%	0.00%	12.00%		0.00%
Sitapur	23.00%	52.00%	64.00%	72.00%	39.00%
Balia	56.00%	72.00%	65.00%	73.00%	55.00%
Deoria	0.00%	8.00%	6.00%		0.00%
Mau	0.00%	0.00%	2.00%	1.00%	4.00%
Azamgarh	51.00%	34.00%	0.00%		0.00%
Gazipur	76.00%	72.00%	88.00%	88.00%	87.00%
Hardoi	82.00%	6.00%	16.00%	29.00%	0.00%
Lakhimpur	11.00%	33.00%	61.00%	62.00%	0.00%
Cellone BSNL			78.00%	60.00%	41.00%
POI with Private Operators					
Reliance NLD				5.00%	22.00%
Reliance Mobile				3.00%	0.00%
UP West					
POI with BSNL					
Agra	0.00%	0.00%	NA	NA	0.00%
Haldwani	9.09%	0.00%	1.00%	3.71%	0.00%
Mainpuri	2.10%	0.00%	4.00%	0.00%	0.00%
Saharanpur	0.00%	0.00%	12.00%	0.00%	0.00%
Reliance Local	0.40%	0.00%	6.00%	0.00%	0.00%
West Bengal (ROB)					
POI with BSNL					
ASANSOL TAX	0.00%	0.00%	0.00%	0.00%	0.00%
KHRAGPORE TAX	0.00%	0.00%	0.00%	0.00%	0.00%
Bankura Tax		4.00%	0.00%	9.00%	0.00%
POI with other operators					
RIM Khargpur			5.00%	0.00%	0.00%
Airtel, Asansol	0.00%	0.00%	NA	0.00%	0.00%
Tata	0.00%	0.00%	NA	0.00%	0.00%
Reliance Infocom Fixed	4.00%	0.00%	0.00%	0.00%	0.00%
VSNL NLD					4.70%
Haryana					
POI with BSNL					
Ambala	0.00%	0.00%	0.00%	0.00%	0.00%
Cellone BSNL			1.28%	1.23%	0.00%
Maharashtra (BPL Mobile Cellular Ltd)					
POI with BSNL					
Jalgaon	1.54%	3.52%	2.63%	3.31%	1.81%
Nasik	0.35%	0.25%	0.31%	0.00%	0.00%
Panjim	0.97%	2.15%	1.36%	4.65%	0.02%
Satara	0.44%	0.80%	0.90%	0.05%	0.00%
Shakardara	0.59%	2.19%	0.01%	0.11%	0.14%
Kalyan	0.06%	0.23%	0.39%	0.06%	0.00%
Nagpur		1.84%	0.03%	0.07%	0.01%
Pune	12.99%	3.24%	3.34%	4.90%	4.98%
Tamilnadu (BPL Mobile Cellular Ltd)					
POI with BSNL					
Ganpath 3	0.00%	0.00%	0.00%	0.00%	0.00%
OCBTXOUT	0.00%	0.71%	0.00%	0.00%	0.00%
Vellore	0.00%	1.16%	0.00%	0.00%	0.00%
Kerala (BPL Mobile Cellular Ltd)					
POI with BSNL					
Kochi	0.00%	0.00%	0.00%	0.00%	0.02%

Calicut	0.78%	1.80%	0.06%	0.16%	0.02%
Alleppy	0.00%	0.00%	0.00%	0.00%	0.00%

POI Congestion Report of M/s Aircel Cellular Limited for the months of Jan, 2006 - April, 2006					
Name of POIs	Benchmark >0.5%				
	Jan	Feb	Mar	Apr	May
Chennai					
POI with BSNL					
BSNL Local	0.00%	0.00%	0.00%	0.00%	0.00%
BSNL NLD	2.00%	1.80%	1.00%	0.80%	0.80%
POI with other operators					
Airtel Local	0.40%	0.20%	0.00%	0.20%	0.00%
Hutch Local	1.00%	0.30%	0.40%	0.30%	0.00%
ROTN BPL	1.00%	0.00%	0.00%	0.00%	0.00%
ROTN TATA	0.50%	0.50%	0.50%	0.50%	0.20%
ROTN Reliance	10.00%	9.00%	5.20%	6.10%	5.60%
ROTN Airtel	5.00%	4.50%	3.60%	3.50%	0.00%
Tamilnadu					
POI with BSNL					
Coimbatore	8.06%	7.92%	6.41%	5.38%	0.00%
Dharmapuri	0.00%	0.00%	0.00%	0.00%	0.00%
Tanjore	29.50%	25.50%	20.50%	0.00%	0.00%
Cuddalore	0.00%	0.00%	0.00%	0.25%	0.20%

POI Congestion Report of M/s Dishnet Wireless Limited for the month of Jan, 2006 -May, 2006					
Name of POIs	Benchmark >0.5%				
	Jan	Feb	Mar	Apr	May
Assam					
POI with BSNL					
Guwahati Tax NLD	0.96%	NA	23.60%	64.15%	62.12%
Guwahati Tax ILD				0.76%	28.32%
Guwahati Tax ILD Outgoing				NA	32.79%
Pre Paid IVR				0.74%	NA
Prepaid IVR Outgoing				0.74%	NA
Guwahati Tax NLD Outgoing				72.50%	78.26%
Guwahati Tax Electrical E1Incomming	91.57%	NA	NA	96.16%	NA
Guwahati, L1Electrical E1Outgoing		39.66%	7.19%	14.47%	NA
Nagaon L2		2.12%	12.77%	45.70%	39.89%
Nagaon L2 Outgoing				31.72%	18.85%
Guwahati local & NLD Outgoing	NA	NA	12.79%	0.00%	0.00%
Jorhat L2	NA	NA	7.18%	0.00%	0.00%
Jorhat L2 outgoing	NA	NA	5.20%	0.00%	0.00%
POI with other operators					
Airtel Guw					0.83%
Airtel Guw Outgoing					1.27%
Reliance Telecom	NA	11.68%	NA	1.46%	0.00%
Reliance Telecom, Outgoing				0.87%	0.01%
North East					

POI with BSNL					
Shillong Local & NLD	NA	NA	4.65%	51.07%	38.08%
Shilong Local & NLD outgoing			4.65%	51.07%	38.08%
Shillong TAX ILD incomming			1.59%	NA	0.00%
Shilling TAX ILD Outgoing			1.67%	NA	0.52%
VSNL POI NLD, Dimapur			24.40%	25.53%	17.30%
VSNL POI NLD Outgoing			24.40%	NA	17.30%
Dimapur MSC VSNL NLD	7.81%	24.74%	24.40%	NA	NA
RTL, Shillong Outgoing			6.13%	NA	NA
RTL, Shillong		67.74%	2.90%	NA	NA
Shillong Tax Level 1		90.39%	NA	NA	NA
Imphal			9.38%	22.38%	33.06%
Imphal Incomming			9.42%	0.00%	0.00%
Imphal Outgoing			9.16%	52.21%	31.87%
Imphal RBSC Outgoing				2.65%	NA
Orissa					
POI with other operators					
Aasansol TAX ILD					22.22%
Aasansol TAX ILD Outgoing					22.22%
Orissa					
POI with other operators					
Bhuvneshwar Airtel				39.12%	0.00%
Bhuvneshwar Airtel - Outgoing				8.24%	0.00%
Reliance Telecom Limited - Outgoing				0.97%	0.75%
Reliance Telecom Limited	NA	0.00%	0.00%	0.62%	1.38%
Reliance Infocom Limited Outgoing				70.98%	0.18%
Reliance Infocom Limited	NA	0.00%	0.00%	58.33%	0.21%
J & K					
POI with BSNL					
Jammu Tax Local NLD					12.48%
Jammu Tax Local NLD Outgoing					10.24%
Udhampur L2					67.32%
Udhampur L2 Outgoing					15.73%
Jammu Tax national Roamer			1.34%	19.40%	34.59%
Jammu Tax national Roamer, Outgoing			1.34%	19.40%	34.59%

Comparative POIs Congestion Report of M/s Bharti Tele-ventures Limited for the months of Jan, 2006 - May, 2006

Name of Circle and POIs	Benchmark >0.5%				
	Jan	Feb	Mar	Apr	May
Assam					
POI With BSNL(Level 1 Tax)					
BSNL-STD/Local-Guwahati-Home Subs	17.90%	22.40%	13.50%	13.50%	0.00%
JORHAT BSNL	0.00%	17.50%	0.00%	0.00%	0.00%
Inroamers calling Local /STD	82.70%	95.70%	62.50%	62.50%	0.00%
POI with other NLDO					
BTSOL Kolkatta NLD	0.00%	0.00%	0.40%	0.40%	0.00%
BTSOL Kolkatta ILD	0.00%	0.00%	1.10%	1.10%	0.00%
POI with other CMTO					
Reliance Guwahati	0.00%	28.10%	0.50%	0.00%	20.50%
Bihar					
POI with other NLDO /ILDO					
BTSOL NLD Kolkata (Patna MSC)	0.00%	0.06%	0.80%	0.10%	0.00%
BTSOL NLD Kolkata (Ranchi MSC)	0.10%	0.51%	NA	0.00%	0.00%
BTSOL ILD (International roamer) (Patna MSC)	1.80%	0.00%	0.00%	0.00%	0.00%

POI with Other CMTO					
Reliance Telecom Ltd.,(Patna MSC)	0.60%	19.11%	50.67%	0.55%	2.41%
Tata Mobile (Patna MSC)	0.00%	3.58%	0.00%	NA	2.59%
Tata FIX (Patna MSC)	0.40%	1.55%	0.00%	NA	
Reliance fixed (Ranchi MSC)				9.64%	20.77%
Reliance WLL (Ranchi MSC)				13.87%	28.62%
Reliance WLL (Patna MSC)	2.40%	6.47%	0.00%	0.59%	2.11%
Reliance Fix (Patna MSC)	1.20%	11.10%	39.51%	9.03%	20.62%
TATA Mobile (Ranchi MSC)	0.00%	2.46%	0.04%	NA	2.41%
TATA Fixed (Ranchi MSC)	0.00%	0.37%	0.05%	0.08%	
POI With BSNL Level 1 TAX					
PATNA Level 1Tax (Buddha Marg)	47.70%	37.66%	56.51%	31.49%	43.46%
Patna level 1 Tax for ILD (Buddha Marg)	0.00%	0.00%	0.00%	0.00%	0.14%
Patna L1 for national Roamer (Buddha Marg)	28.20%	36.00%	NA	6.19%	0.14%
Patna L1 National Roamer ILD (Buddha Marg)	0.00%	0.00%		0.00%	44.53%
Rajender NagarL1 Tax	18.50%	16.00%	31.79%	0.00%	11.59%
Rajender Nagar L1 Tax for ILD	0.00%	0.00%		13.06%	0.00%
Rajender Nagar L1 Tax national Roamer			87.58%	79.05%	79.84%
POI With BSNL Level 2 TAX					
Ranchi	0.00%	0.00%	0.00%	0.00%	0.00%
Gaya	54.90%	64.63%	51.58%	10.85%	15.24%
Muzaffarpur	1.10%	10.74%	28.82%	17.97%	3.36%
Bhagalpur	50.90%	61.72%	75.79%	20.46%	29.12%
Jameshedpur	0.80%	0.00%	0.00%	0.61%	0.00%
Chapra	60.40%	42.57%	66.26%	44.33%	42.47%
Dharbhanga	42.50%	56.88%	76.63%	43.41%	25.36%
Motihari	37.80%	22.01%	51.44%	30.05%	38.20%
Hazaribagh	0.20%	3.36%	10.44%	4.12%	10.77%
Munger	37.40%	47.23%	76.62%	57.24%	20.81%
Arrah POI	27.40%	5.26%	42.77%	16.34%	29.96%
Sasaram					86.21%
Katihar	0.01%	3.79%	28.87%	10.87%	13.21%
Dhanbad			0.60%	0.00%	
Chennai					
POI with BSNL level 1 TAX					
Flower Bazzar	36.30%	5.00%	6.90%	8.25%	11.50%
Haddow Rd Tax	12.94%	0.00%	0.00%	0.00%	2.70%
POI with BSNL Tandem					
Flower Bazzar Tandem	0.00%	0.00%	0.00%	0.00%	0.00%
KK Nagar Tandem	5.19%	0.00%	0.00%	0.00%	0.00%
POI with other operators					
Hutch			15.80%	0.00%	0.00%
Aircel, Direct POI			4.48%	6.57%	14.52%
Aircel TN - Outgoing	0.00%	17.00%	NA	1.91%	11.01%
Reliance Mobile TN	NA	16.00%	0.00%	0.00%	8.00%
POI with other NLDO & other operators					
Reliance ILD	0.00%	0.00%	0.00%	0.00%	0.00%
Delhi					
POI with long Distance operators					
BSNL		5.60%	17.60%	4.40%	3.20%
POI with other operators					
Dolphin			6.40%	8.40%	15.50%
Gujarat					
POI with other operators					
IDEA, Ahmedabad	0.00%	0.01%	0.14%	0.02%	0.13%

IDEA,Rajkot	0.00%	0.05%	0.00%	0.00%	0.00%
Hutch, Ahmedabad Corp.House	0.00%	0.12%	0.09%	0.00%	0.00%
Hutch,Ahmedabad Sakar	0.00%	0.01%	0.13%	0.00%	0.10%
TATA Fix, Ahmedabad	0.00%	0.00%	0.00%	0.00%	0.00%
TATA Fix Rajkot	0.00%	0.00%	0.00%	0.00%	0.00%
TATA WLL, Ahmedabad	0.00%	0.00%	0.00%	0.16%	0.00%
Tata Wireline	0.00%	0.00%	0.00%	0.00%	0.00%
POI with BSNL Level 1 TAX					
GULBAI TEKRA	0.86%	2.95%	1.95%	6.47%	3.61%
Bhadra - ahd	0.00%	1.34%	0.94%	3.25%	3.25%
POI with BSNL Level 2 TAX					
Gulbai tekra _ahd	0.00%	2.66%	9.38%	25.62%	25.36%
Gulbai tekra _ahd	0.00%	8.69%	6.30%	15.40%	18.00%
Valsad					15.94%
Surat	0.00%	0.00%	0.00%	0.00%	
Bharuch	0.02%	0.25%	0.37%	0.00%	6.27%
Palanpur					32.95%
Anand	1.28%	0.00%	0.00%	0.00%	
Palanpur	0.00%	0.08%	NA	13.92%	
Himantnagarh	64.61%	87.82%	89.44%	92.00%	93.03%
Mehasana	0.00%	0.00%	0.00%	0.32%	1.11%
Bhavanagar	11.73%	10.08%	0.00%	0.00%	
Junagadh	12.11%	26.48%	34.56%	56.34%	51.76%
Junagadh 2					89.17%
Jamanagar	0.00%	0.00%	0.18%	0.00%	10.19%
Bhuj	0.83%	31.76%	49.55%	11.40%	15.68%
Jamnagar	0.00%	0.00%	13.94%	11.59%	
Jamnagar 2					2.43%
Rajkot	36.29%	61.17%	68.44%	53.47%	0.00%
Surendranagar	88.52%	95.46%	96.89%	97.22%	88.26%
Amrelli	11.07%	33.74%	69.28%	73.23%	69.68%
Bhaktinagar				70.20%	75.36%
Haryana					
POI With CMTO					
Idea			0.67%	0.00%	0.01%
POI With Other NLDO					
NLD MSC 2			2.09%	0.00%	0.00%
POI with BSNL Level 1 Tax					
BSNL Cellone OG	3.00%	2.41%	7.36%	0.00%	0.78%
Ambala outgoing	0.00%	0.01%	0.24%	0.38%	1.87%
Ambala City					0.51%
Cellone Ambala			23.29%	0.00%	0.00%
POI with BSNL Level 2 Tax					
Rohtak	0.00%	0.00%	0.00%	0.00%	0.00%
Jind	1.00%	12.22%	0.00%	0.00%	0.15%
Hissar	0.00%	0.00%	0.00%	0.00%	0.01%
Gurgaon	0.00%	0.60%	0.27%	0.00%	0.00%
Rewari			0.60%	0.19%	0.04%
Himachal Pradesh					
POI with BSNL Level 1 Tax					
Shimla	19.00%	30.95%	33.93%	3.29%	11.66%
Shimla CellOne	19.00%	19.58%	19.51%	15.57%	6.14%
POI with BSNL Level 2 Tax					
SOLAN	0.00%	0.00%	0.00%	0.00%	0.00%
Kullu	1.00%	0.00%	0.00%	0.00%	0.00%

Mandi	0.01%	1.33%	0.00%	0.06%	
DHARAMSHALA	25.00%	48.09%	47.61%	44.07%	57.27%
HAMIRPUR	47.00%	62.28%	61.30%	58.14%	38.41%
POI With CMTO					
Reliance					2.24%
Reliance WLL				2.59%	9.42%
J & K					
JAMMU TAX level 1	81.00%	73.31%	72.52%	0.69%	80.24%
Srinager Tax Level 1	22.00%	68.32%	4.66%	0.00%	0.00%
BTSOL - INT				6.16%	0.00%
Jammu ISD				1.19%	0.00%
Karnataka					
POI with BSNL Level 2 Tax					
Mangalore	5.15%	0.26%	6.31%	0.81%	0.00%
TUMKUR	8.66%	10.47%	11.31%	1.50%	0.00%
MANDYA	0.43%	4.56%	1.54%	6.20%	0.15%
HASSAN	31.89%	36.47%	4.29%	3.40%	0.24%
Hublie		2.20%	7.56%	4.40%	0.31%
BELGAUM	27.42%	27.94%	20.34%	5.16%	0.28%
BELLARY	0.00%	0.00%	0.00%	0.00%	0.00%
BIJAPUR	36.68%	35.48%	40.69%	0.00%	0.62%
KARWAR	27.60%	32.59%	0.02%	3.78%	0.00%
Kolar	0.00%	0.00%	0.00%	0.68%	0.00%
Madikeri	1.51%	0.00%	0.00%	0.00%	0.00%
Gulbarga	1.73%	9.74%	14.65%	4.83%	0.15%
Mysore	3.75%	7.38%	9.29%	1.20%	0.25%
Simoga	3.56%	6.06%	10.09%	0.00%	0.00%
Bidar				1.23%	0.15%
Devangiri					1.92%
POI with BSNL Level 1 Tax					
TAX	1.69%	8.34%	7.03%	10.19%	0.00%
Local Exch Jayanagar			3.23%	8.91%	0.00%
POI with other operators					
Spice	2.22%	11.24%	3.02%	0.35%	0.72%
Hutch	2.08%	8.84%	11.52%	0.98%	0.50%
Tata	0.00%	4.80%	0.00%	0.12%	0.01%
Touchtel			3.27%	0.76%	0.00%
Kerala					
POI with other operators					
Reliance NLD	0.00%	0.00%	2.14%	0.00%	0.00%
Reliance ILD	9.80%	0.00%	0.00%	0.00%	0.00%
BPL	0.00%	0.00%	0.00%	0.00%	0.00%
Escotel			3.20%	0.00%	0.00%
POI with BSNL Level 2 TAX					
Trivandrum	0.00%	0.00%	0.00%	0.00%	0.00%
Kottayam	0.00%	0.00%	0.00%	0.00%	0.00%
Thiruvalla	0.00%	0.00%	0.00%	0.00%	0.00%
Palakkad	0.00%	0.00%	0.00%	2.11%	0.00%
Calicut	0.00%	0.00%	0.00%	0.00%	0.00%
Cellone	10.08%	8.20%	12.00%	0.00%	7.00%
POI with other operators					
Tata Fixed			1.00%	0.00%	0.00%
Tata Mobile			2.00%	0.00%	0.00%
Kolkatta					

POI with other operators					
RTL Kolkatta					0.96%
Madhya Pradesh					
POI with BSNL Level 2 TAX					
Bhopal POI OG	78.30%	54.08%	26.50%	24.27%	38.17%
Bhopal POI IC	60.50%	29.94%	43.11%	0.00%	0.00%
Dhar OG	1.65%	43.46%	35.39%	19.73%	20.11%
Damoh POI				1.93%	1.75%
Balaghat IC	0.00%	0.00%	0.00%	0.00%	0.00%
Balaghat OG	16.13%	11.48%	29.26%	42.22%	14.73%
Chhindwara OG	0.50%	3.53%	18.07%	30.37%	42.41%
Raigarh OG	7.01%	17.50%	14.34%	27.67%	27.41%
Raisen POI	1.00%	5.84%	11.98%	17.12%	17.86%
Narsingpur POI	1.09%	4.28%	9.09%	3.52%	0.15%
Seoni POI	2.60%	0.00%	NA	0.01%	0.02%
Chattarpur POI	29.70%	51.97%	67.58%	28.01%	33.37%
Rewa POI				1.71%	4.28%
Bhilai POI	22.20%	27.67%	6.75%	43.86%	9.02%
Bilaspur POI	4.99%	12.40%	30.31%	21.24%	25.92%
Raipur POI	36.29%	30.80%	21.37%	30.52%	41.45%
Betul OG		15.79%	0.80%	1.54%	0.00%
Morena POI	68.76%	66.76%	31.32%	15.15%	21.98%
Mandasore				0.59%	0.67%
Guna POI	6.72%	19.39%	41.75%	42.81%	0.65%
Shivpuri POI			2.63%	7.61%	8.87%
Gwalior POI			3.48%	0.56%	0.00%
Khandwa POI			2.27%	3.07%	0.00%
Vidhisa POI		3.25%	12.46%	25.52%	28.35%
Ratlam POI	5.96%	0.78%	0.00%	0.00%	0.00%
Sagar POI	18.05%	24.37%	52.05%	45.35%	61.24%
BSNL ILD	25.00%	0.12%	0.06%	0.29%	0.00%
Satna POI		0.64%	0.00%	0.09%	0.01%
Sahajanpur		2.42%	11.72%	29.96%	21.53%
Jhabua OG				7.32%	6.49%
Beora					9.77%
Khargone		47.52%	71.01%	75.60%	72.65%
Itarsi		0.73%	2.78%	4.35%	2.87%
Panna		26.55%	17.00%	0.00%	1.92%
Jabalpur		1.59%	9.86%	0.08%	0.06%
Ujjain					3.14%
POI with other operators					
Idea POI	2.00%	1.02%	3.28%	2.59%	1.86%
Reliance CDMA	4.28%	6.11%	9.56%	0.91%	1.61%
Reliance Fix	0.75%	0.06%	0.02%	NA	NA
Reliance GSM				3.96%	8.39%
BTSOL NLD	0.52%	0.00%	0.37%	0.00%	0.00%
BTNL Gwalior	0.00%	0.00%	0.00%	0.62%	0.84%
Maharashtra & Goa					
POI with other operators					
Bharti - Cellone	NA	27.32%	35.36%	32.42%	9.99%
BSNL - Cellone					28.26%
BSNL Nagpur ISD	19.59%	18.52%	9.68%	0.33%	20.30%
Bharti_Idea	NA	55.57%	17.58%	21.34%	3.64%
Bharti Hutch Orange Mumbai OG	NA	20.34%	47.07%	69.97%	46.74%
Bharti Reilaince Mumbai	NA	4.17%	3.67%	11.67%	7.94%

Bharti_Bharti Mumbai	NA	2.89%	75.06%	12.34%	9.05%
Tata Fixed	NA	0.64%	0.31%	2.30%	0.13%
Tata CDMA	NA	6.77%	0.09%	2.13%	9.81%
Tata CDMA Mumbai	NA	13.94%	0.01%	0.66%	0.05%
Reliance Fixed Line	NA	6.42%	1.26%	0.96%	0.50%
Reliance CDMA	NA	7.42%	0.07%	1.01%	7.10%
Reliance CDMA					1.66%
Bharti _ BPL				0.66%	1.99%
Idea Outgoing					2.14%
POI with BSNL Level 1TAX					
Pune Tax 1				84.31%	5.60%
Nagpur	25.02%	25.02%	11.55%	13.81%	6.65%
Sakkardara Tax		70.58%	11.55%	12.80%	NA
Bharti ILDO	0.00%	0.00%	0.00%	0.00%	NA
Jalgaon Tax			31.90%	NA	NA
Jalna			17.61%	NA	NA
Kolhapur			1.90%	NA	NA
Nasik			0.62%	NA	NA
Osmanabad			6.40%	NA	NA
Sawantwadi Tax			6.67%	NA	NA
POI with BSNL Level 2TAX					
Pune Model Colony	10.69%	24.13%	58.17%	NA	NA
Jalgaon	9.97%	12.64%	31.90%	31.90%	0.00%
Khamgaon	50.38%	NA	NA	22.88%	NA
Kalyan	18.29%	23.70%	3.84%	10.54%	1.70%
Latour OG				18.65%	9.97%
Aurangabad	14.67%	9.79%	6.48%		0.00%
Ahamad Nagar	NA	NA	NA		NA
Nanded		22.20%	6.95%	12.34%	0.00%
Beed		41.78%	26.74%	14.54%	7.44%
Dhule	42.77%	45.70%	38.34%	12.65%	0.00%
Solapur	14.64%	25.26%	0.03%	10.42%	0.00%
Kolhapur	15.05%	12.39%	15.92%	1.90%	1.00%
Nagar	20.61%	29.86%	11.79%	11.89%	5.00%
GOA	1.05%	0.28%	NA	0.00%	0.00%
Satara	3.08%	0.27%	0.09%	0.09%	0.66%
Sangli	16.75%	15.54%	0.00%	NA	0.79%
Jalna	55.60%	NA	17.61%	NA	8.47%
Nasik		0.90%	0.62%	0.62%	0.00%
Akola	1.66%	7.33%	2.32%	7.89%	0.96%
Amravati	42.79%	35.28%	17.77%	12.34%	1.59%
Chandrapur	9.64%	17.13%	6.33%	12.68%	0.00%
Wardha	5.59%	16.02%	12.34%	15.82%	7.04%
Yawatmal	33.13%	29.46%	NA	1.83%	2.36%
Savantwadi	17.17%	29.25%	37.25%	37.25%	14.10%
Bhandara	0.45%	5.40%	0.87%	0.00%	0.00%
Ratnagiri	60.98%	51.78%	37.25%	23.34%	7.55%
Osmanabad	23.31%	30.58%	7.12%	6.40%	10.20%
Nagpur			7.09%	13.81%	NA
Sakardara Nagpur			3.84%	NA	0.00%
Prabhani		4.99%	0.99%	16.59%	9.23%
Mumbai					
POI with MTNL Dolphin					
Bharti - Dolphin	0.00%	0.00%	0.00%	0.00%	0.00%
POI wih MTNL level 1 TAX					

Fountain	0.00%	0.00%	0.00%	0.00%	0.00%
Thane	0.00%	0.00%	0.00%	0.00%	0.00%
POI With MTNL Tandem					
Cumballa level 3	0.00%	0.00%	0.00%	0.00%	0.00%
Ghatkopar level 5	0.00%	0.00%	0.00%	0.00%	0.00%
Vile Parle level 6	0.00%	0.00%	0.00%	0.00%	0.00%
SakiVihar level 8	0.00%	0.00%	0.00%	0.00%	0.00%
Mulund	0.00%	0.00%	0.00%	0.00%	0.00%
POI with TATA (Local)					
TATA CDMA total	0.90%	0.00%	0.00%	0.00%	0.00%
North East					
POI with other operators					
Reliance Guwahati				42.70%	NA
Reliance Telecom Shillong	0.00%	28.10%	0.00%	NA	8.10%
Shillong BSOL Kol NLD				21.20%	0.00%
POI with BSNL Level 2 TAX					
BSNL-STD/Local-Shillong-Home Subs OG	0.00%	0.00%	0.00%	89.60%	82.90%
Orissa					
POI with BSNL Level 1 TAX					
Cuttack	0.93%	7.29%	23.04%	7.93%	7.07%
POI with BSNL Level 2 TAX					
Bhawanipatna	2.29%	1.66%	3.23%	0.37%	0.17%
Angul	1.02%	0.00%	0.00%	0.06%	0.00%
Sabalpur					1.75%
Kotraput					8.98%
POI with other operators					
RTL GSM		6.27%	11.02%	24.72%	36.22%
BTSOL NLD		0.80%	0.67%	1.96%	0.00%
RILCDMA	10.24%	9.25%	9.81%	0.41%	0.03%
RIL ILT	0.00%	0.00%	0.00%	0.00%	0.00%
Punjab					
POI with BSNL Level 1 TAX					
Cellone			7.09%	9.30%	13.62%
JALANDHAR (Focal Point)	0.06%	2.17%	0.10%	0.00%	0.00%
JALANDHAR (MTS Nagar) local	0.69%	0.00%	0.00%	0.00%	0.00%
JALANDHAR (MTS ISD)	0.00%	0.00%	0.00%	0.00%	6.12%
POI with other operators					
AIRTEL (Broadband Jal)	0.00%	0.00%	0.00%	0.00%	0.00%
Spice, Mohali		1.40%	0.00%	0.00%	0.00%
Tat Cellular				2.23%	9.59%
Rajasthan					
POI with other operators					
Bharti - TATA	0.00%	0.00%		0.00%	0.00%
Bharti - Shyam Tele	0.00%	0.00%		0.00%	0.00%
POI with BSNL Level 1 TAX					
Jaipur	43.23%	0.00%	0.00%	0.00%	0.00%
Cellone			4.15%	4.21%	9.91%
POI with BSNL Level 2 TAX					
Ajmer	0.00%	0.00%	0.00%	0.00%	0.00%
Alwar	66.43%	78.12%	63.43%	79.57%	53.84%
Barmer	75.25%	79.32%	66.60%	70.93%	61.40%
Bharatpur	68.91%	81.71%	77.57%	71.56%	73.36%
Bhilwara	0.00%	0.00%	0.00%	0.00%	0.00%
Bikaner	38.28%	39.17%	0.00%	0.00%	0.00%

Bundi	35.58%	71.27%	77.61%	53.88%	0.00%
Chittorgarh	20.46%	28.47%	36.07%	43.38%	8.22%
Sriganganagar	6.15%	7.08%	0.60%	5.73%	1.21%
Jhalawar	58.32%	70.29%	64.80%	70.24%	0.00%
Jhunjhunu	52.44%	55.89%	63.63%	48.27%	0.00%
Kota	41.53%	43.35%	0.00%	0.04%	0.00%
Sirohi	88.38%	91.65%	88.14%	88.46%	89.40%
Sikar	75.81%	75.62%	82.81%	74.98%	0.27%
Tonk	22.17%	52.11%	62.23%	35.18%	57.75%
Udaipur	0.00%	0.00%	0.00%	0.04%	0.00%
SawaiMadhopur		25.59%	35.79%	23.70%	35.08%
Pali		8.64%	8.37%	55.30%	22.97%
Banswara			0.81%	3.93%	5.06%
Churu			85.22%	79.20%	89.11%
Jaisalmer		1.30%	20.77%	6.45%	0.00%
Nagaur				65.98%	87.58%
Tamil Nadu					
POI with BSNL Level 1 TAX					
Race Course TAX	4.12%	2.20%	6.18%	12.54%	0.00%
POI with BSNL Level 2 TAX					0.00%
Dharmapuri	6.80%	30.12%	38.32%	0.00%	0.00%
Ooty	0.00%	30.59%	30.59%	0.00%	0.00%
Tirunelveli	0.00%	0.00%	0.00%	0.00%	0.00%
Vellore	0.00%	39.50%	9.70%	8.36%	0.00%
Virudhnagar		21.50%	28.70%	14.18%	0.00%
Triticorin			3.70%	11.40%	0.00%
Cudalore		16.25%	0.00%	0.00%	0.00%
Coimbatore	0.00%	8.14%	12.00%	8.56%	0.00%
POI with other operators					
Aircell	0.00%	3.50%	0.00%	0.00%	2.00%
BPL	0.00%	0.00%	0.00%	0.00%	0.00%
Reliance GSM		8.25%	0.00%	0.00%	0.00%
Reliance Fix	0.00%	0.00%	0.00%	0.00%	0.00%
HUTCH Chennai - Outgoing	8.00%	8.00%	0.00%	0.00%	0.00%
Aircel Chennai - Outgoing	5.00%	18.20%	0.00%	0.00%	3.20%
Reliance Mobile -Chennai -Outgoing	0.00%	0.00%	0.00%	0.00%	0.00%
UP - East					
POI with FWPO/FWTO					
Bharti- Reliance	0.00%	0.00%	0.00%	0.00%	0.00%
VSNL				7.20%	0.00%
POI with other operators					
Bhart - Hutch	1.46%	9.50%	0.30%	1.50%	6.60%
Tata					5.10%
Bhart - Reliance	3.22%	36.20%	0.00%	0.00%	4.70%
Bharti_Idea	NA	38.80%	0.20%	0.10%	0.00%
POI with BSNL Level 1 TAX					
IndraNagar	NA	75.20%	26.00%	10.20%	NA
IndraNagar AXE	17.00%	NA	NA	NA	NA
KesharBagh	1.29%	0.00%	3.20%	NA	NA
Cellone			4.80%	26.90%	21.60%
POI with BSNL Level 2 TAX					
Barabanki	0.37%	45.10%	55.80%	0.00%	0.90%
Kanpur					2.60%
Basti	0.24%	59.90%	43.00%	37.84%	35.90%

Jhansi			1.90%	1.54%	0.00%
Faizabad	0.23%	38.20%	39.00%	26.91%	55.20%
Jaunpur	0.11%	92.30%	88.80%	83.15%	94.40%
Deoria	0.00%	67.10%	67.40%	38.46%	70.00%
Mirzapur	0.24%	84.20%	53.10%	26.63%	52.50%
PratapGarh	0.24%	78.90%	14.30%	68.98%	79.20%
AzamGarh	0.29%	53.00%	68.00%	17.12%	55.90%
Sitapur	0.17%	55.70%	51.30%	48.36%	72.50%
Sultanpur	0.13%	49.50%	0.60%	12.22%	5.60%
Varanasi	0.43%	17.90%	1.00%	10.66%	7.30%
Unnao					0.90%
Allahabad					2.40%
Farukhabad			54.60%	33.20%	65.00%
Gorakhpur	0.53%	37.40%	39.00%	3.66%	2.70%
Sahajahanpur	NA	1.10%	0.10%	3.11%	1.00%
Balia			22.20%	27.86%	51.70%
Fatehpur	NA	53.30%	62.20%	0.00%	0.00%
Hardoi	NA	17.40%	19.00%	1.33%	17.10%
Hamirpur	NA	1.90%	79.30%	56.89%	92.50%
Gazipur					0.90%
Gonda	NA	73.30%	0.00%	0.00%	0.20%
UP - West					
POI with BSNL Level 1TAX					
BSNL Level 1, Agra	5.70%	60.00%	19.80%	0.70%	0.00%
POI with BSNL Level 2TAX					
Meerut			19.30%	3.98%	1.50%
Bareilly	0.00%	0.00%	0.00%	0.00%	0.00%
Saharanpur	0.00%	0.00%	0.00%	0.00%	0.00%
Haldwani	0.01%	30.20%	23.30%	20.20%	65.70%
Moradabad	0.13%	46.60%	20.50%	25.96%	0.00%
Bijanore	0.00%	22.60%	8.20%	26.60%	30.80%
Mainpuri		16.60%	NA	0.00%	0.00%
Etah		0.60%	0.00%	0.00%	0.00%
Modinagar		59.60%	57.70%	66.12%	64.00%
Muzzafarpur		33.40%	1.30%	34.34%	25.00%
Badauyun	0.00%	0.00%	0.00%	0.00%	0.00%
Cellone					77.60%
POI with other operators					
Hutch		0.70%	0.00%	2.60%	5.00%
Tata				5.80%	1.90%
Reliance		4.10%	40.40%	44.96%	8.60%
Idea POI			0.90%	2.90%	0.00%
West Bengal					
POI with BSNL Level 1TAX					
Asansol			23.00%	0.04%	0.00%
POI with BSNL Level 2TAX					
Bankura			8.00%	0.00%	0.00%
Coochbihar					66.80%
Jalpaigudi					0.60%
Kharagpur					1.80%
Krishnanagar					1.90%
Cillone					1.50%
POI with other operators					
RTL CDMA WB					4.00%

**POIs Congestion Reports of M/s Tata Teleservices & Tata Teleservices
(Maharashtra) for the months of Jan, 2006 - May, 2006**

Name of POIs	Benchmark >0.5%				
	Jan	Feb	Mar	Apr	May
Delhi					
POI with BSNL					
Ghaziabad_Tandem	0.40%	0.80%	57.80%	0.00%	0.00%
Faridabad_Tandem	4.60%	7.90%	7.10%	1.10%	3.50%
POI with BSNL NLD					
Delhi_Rajendra Nagar TAX (Fix)	1.10%	0.30%	0.00%	0.00%	0.00%
Ghaziabad_TAX	62.70%	62.40%	0.00%	45.30%	37.10%
Gurgaon_TAX	0.00%	0.00%	0.00%	0.00%	0.00%
Faridabad_TAX	0.00%	0.00%	0.00%	0.00%	0.00%
Delhi_Rajendra Nagar TAX (Mobile)	4.90%	3.90%	0.60%	0.00%	0.00%
Delhi Extern Court Tax (Mobile)	4.70%	0.00%	0.00%	0.00%	0.00%
POI with Private Operators					
Delhi_RIL_AXE-10	0.00%	NA	0.00%	0.00%	NA
Gujarat					
POI with BSNL					
Sanad	0.00%	0.00%	2.84%	2.00%	2.00%
Gandhinagar	0.20%	0.00%	3.32%	1.00%	1.00%
Nadiad	3.80%	3.00%	2.17%	0.00%	0.00%
Godhara				9.00%	0.52%
Ankleshwar	0.00%	0.00%	0.00%	0.00%	0.00%
Valsad	34.10%	34.00%	2.66%	3.00%	0.00%
Bilimora	49.70%	41.00%	20.17%	10.00%	2.11%
Bhuj	1.10%	0.00%	1.24%	0.00%	5.15%
Surrendranagar	0.20%	0.00%	0.00%	0.00%	0.00%
Junagarh	0.00%	0.00%	0.00%	0.00%	0.00%
Gondal	1.30%	1.00%	2.65%	3.00%	1.38%
Porbandar	19.40%	26.00%	16.87%	10.00%	1.05%
Upleta	0.00%	1.00%	0.01%	0.00%	0.00%
Limbdi	0.00%	0.00%	2.50%	6.00%	0.00%
Morbi	0.00%	0.00%	0.00%	0.00%	1.45%
Veraval	27.90%	24.00%	10.49%	5.00%	2.93%
Jetpur	2.20%	2.00%	0.43%	0.00%	0.00%
Navsari	16.30%	4.00%	2.92%	6.00%	14.22%
Deesa	0.00%	0.00%	1.23%	0.00%	11.00%
Bhavnagar	0.00%	0.00%	0.00%	0.00%	0.00%
Ahmedabad_Bhadra TAX	0.10%	0.00%	0.00%	0.00%	0.00%
Junagarh Tax	4.60%	2.00%	0.00%	0.00%	0.00%
Anand Tax	5.60%	9.00%	0.00%	0.00%	0.00%
Surat_TAX	56.80%	19.00%	39.00%	2.00%	0.00%
Valsad TAX			23.00%	0.00%	0.69%
Rajkot KR - TAX	24.00%	0.00%		0.00%	0.00%
Bhuj Tax	40.00%	38.00%	24.00%	0.00%	0.00%
Baroda TAX	24.60%	24.00%	23.00%	0.00%	0.00%
Ahmedabad_Gulbaitekra TAX	0.00%	0.00%	0.00%	0.00%	2.12%
Idar	0.20%	0.00%	0.00%	NA	0.00%
Surat Tax Lucent NLD				1.00%	0.00%
Dwarka	0.00%	0.00%	0.00%	4.00%	2.70%
Bharuch Tax	2.20%	5.00%	0.00%	0.00%	0.00%
Halol	0.50%	0.00%	0.00%	0.00%	2.47%
Bhadra					1.00%

Bhuj Tax Fix					13.00%
POI with Private Operators					
Idea Ahendabad 1					2.00%
Idea Ahendabad 2					1.00%
Rajasthan					
POI with BSNL					
Jaipur L1 TAX Mobile NLD	71.00%	70.00%	53.00%	39.00%	53.07%
BSNL_Ajmer Mobile	2.00%	14.00%	19.00%	18.00%	18.52%
Bharatpur Mobile				4.00%	4.11%
Jaisalmer Mobile				1.00%	0.00%
BSNL_Jodhpur Fix	4.00%	11.00%	52.00%	8.00%	12.00%
Pali Local Fixed				3.00%	0.00%
BSNL L1 TAX_Jaipur_Fix	74.00%	76.00%	74.00%	67.00%	74.00%
Jaipur L1Bajaj Nagar NLD Traffic				26.00%	26.29%
BSNL_Naguar Mobile	5.00%	30.00%	22.00%	35.00%	21.99%
Alwar Mobile	19.00%	42.00%	10.00%	0.00%	9.65%
Bhilwara Mobile	34.00%	52.00%	50.00%	45.00%	50.36%
Chittorgarh Mobile					2.72%
Karnataka					
POI with BSNL					
Anekal Tandem	0.20%	0.10%	0.00%	0.00%	0.00%
Nalamangala Tandem		3.00%	30.30%	22.64%	17.10%
Bidar Tandem	0.00%	0.00%	0.00%	0.00%	0.00%
Tumkur TAX	24.50%	33.50%	39.80%	2.30%	0.30%
Bidar TAX	0.00%	0.10%	0.10%	0.30%	0.00%
Davangere TAX	38.00%	56.40%	62.50%	55.20%	61.00%
Gulbarga Tax	3.80%	14.00%	12.80%	11.90%	0.00%
POI with Private Operators					
Touchtel_Mangalore (HBL LE)	16.70%	19.90%	15.60%	14.20%	17.27%
Reliance Bangalore Tandem	2.50%	0.00%	0.00%	2.30%	14.30%
VSNL Mumbai					3.50%
Haryana					
POI with BSNL					
SONIPAT TANDEM	50.89%	60.00%	64.60%	60.76%	29.50%
Panipat Tandem		3.73%	0.00%	0.00%	0.00%
YAMUNANAGAR TANDEM	20.30%	56.40%	8.50%	3.44%	1.10%
AMBALA TAX(Fixed NLD)	75.45%	81.20%	75.05%	75.00%	73.30%
AMBALA TAX(Mobile NLD)	70.93%	0.00%	26.50%	NA	0.00%
KARNAL TAX(Fixed NLD)	20.71%	34.05%	52.20%	30.93%	30.93%
SONIPAT TAX(Fixed NLD)	77.34%	82.70%	82.00%	77.00%	39.00%
Jind Tax (Mobile Local)	38.41%	59.20%	0.00%	0.00%	0.00%
Rewari TAX Mobile	21.85%	46.60%	6.39%	0.22%	0.00%
VSNL NLD CMO Mobile NLD GSM		0.83%	0.00%	0.00%	3.60%
Cellone					15.11%
Punjab					
POI with BSNL					
Chandigarh Sec. 17 Tandem	7.20%	12.80%	0.00%	0.00%	0.00%
Chandigarh Sec. 34 Tandem	1.03%	1.09%	0.00%	0.00%	0.00%
Ferozpur Tandem	46.60%	51.30%	11.22%	3.94%	1.18%
Jalandhar Tandem				2.78%	0.00%
Kotkapuram Tandem				0.80%	0.00%
Nawanshar Tandem	89.00%	67.90%	56.45%	27.44%	20.00%
Patiala Tandem	3.05%	5.02%	0.00%	0.00%	0.00%
Rayya Tandem	0.90%	3.50%	0.97%	0.13%	0.00%

Rajpura Tandem	17.00%	21.60%	0.00%	0.00%	0.00%
Samarala Tandem		0.70%	0.10%	0.00%	0.00%
Amritsar TAX	7.60%	18.60%	24.20%	15.32%	9.00%
Chandigarh TAX	71.40%	73.10%	72.40%	73.06%	63.00%
Jalandhar TAX	32.40%	47.80%	56.70%	45.03%	39.00%
Jalandhar TAX Mobile NLD				25.30%	
Ludhiana TAX	0.00%	5.40%	10.20%	12.14%	8.00%
Patiala TAX	67.00%	72.00%	76.20%	79.81%	78.80%
Ropar Tax NLD Mobile		2.85%	3.03%	3.65%	4.00%
Chandigarh BTSOL GSM	NA	1.11%	0.00%	NA	NA
Chandigarh BTSOL Fixed	NA	16.20%	NA	NA	NA
Jalandhar Reliance NLD	0.00%	6.04%	5.84%	NA	NA
VSNL Jalandhar	NA	NA	NA	14.31%	NA
VSNL Jalandhar Fixed Mobile NLD	NA	NA	NA	7.43%	NA
Hoshiarpur Tax Mobile NLD	NA	NA	NA	1.06%	NA
Airtel KOL BSNL ILD	NA	NA	NA	NA	NA
TTSL WB	NA	NA	NA	NA	NA
Bihar					
POI with BSNL					
BSNL_Aarah (Fixed Local)	0.00	0.00%	0.00%	3.00%	0.00%
BSNL Aarah	0.00	0.00%	0.00%	0.00%	0.00%
BSNL Patna Roamer Old L1		29.00%		39.00%	24.97%
BSNL Patna Homer Old L2					64.12%
BSNL Patna Hoomer	17.00	12.00%	14.00%	18.00%	NA
BSNL_Jamsedpur	0.00		0.00%	0.00%	0.00%
BSNL_Patna NLD	16.88	17.92%		24.00%	84.47%
Patna Homer New L1	New POIs		93.00%	20.00%	74.40%
Patna Roamer New L1	New POIs		13.00%	91.00%	24.20%
Hazaribag					1.60%
Darbhangal2					34.33%
Gaya L2				29.00%	12.85%
POI with Private Operators/VSNL					
VSNL_Kolkatta	7.43	22.40%	13.33%	20.00%	20.78%
VSNL_Patna	0.00	0.00%	0.00%	0.00%	0.00%
Airtel (Mobile), Patana	10.88	0.00%	0.00%	0.00%	29.29%
AIRTEL, Ranchi, Fixed	0.00	15.28%	0.00%	0.00%	14.43%
AIRTEL, Ranchi, Mobile		7.02%	0.00%	2.00%	16.02%
Bihar sarif					17.02%
RIL Local	2.74	11.42%	0.00%	0.00%	0.00%
RTL Local	NA	13.64%	0.00%	10.00%	4.53%
VSNL Cuttack	0.17	0.00%	0.00%	0.00%	0.00%
UP - W					
POI with BSNL					
Agra Local (Fix)	58.10%	13.60%	0.00%	0.19%	1.49%
Dehradun Local (Fix)	87.50%	69.60%	0.47%	4.34%	46.66%
POI with BSNL- NLD					
Dehradun Tax (Fix)	75.60%	51.60%	8.10%	8.50%	61.00%
Moradabad Tax (Fix)	91.10%	90.90%	72.80%	0.00%	
Meerut Tax (Fix)	90.40%	80.70%	55.20%	0.00%	
Mathura Tax	2.50%	5.30%	0.00%	0.00%	
Bijnaur Tax					2.27%
POI with BSNL - Mobile					
Agra Tax (Cimo)-Sanjay Place	77.87%	49.00%	53.73%	0.00%	0.00%

Agra Tax (Cimo) - Tax Bhawan	61.16%	66.00%	70.59%	11.54%	0.00%
Agra Tax (Cimo-Roamer Only)	2.50%	4.33%	0.81%	0.55%	14.48%
Haldwani Tax				8.10%	14.34%
BSNL Moradabad Tax	0.00%	0.00%	0.00%	0.00%	0.00%
Modinagar Tax (Cimo)	0.00%	0.00%	0.00%	0.00%	4.13%
Rampur Tax					2.91%
POI with Private Operators/VSNL					
Airtel msc 1 mobile					6.65%
Airtel Mobile					1.15%
Airtel Fix					0.83%
Hutch (CIMO) GSM	0.00%	0.00%	0.00%	0.00%	0.00%
VSNL NLD Ambala	0.96%	0.06%	0.00%	0.00%	0.00%
BTSO NLD Fix		2.08%		0.00%	0.00%
BTSO Mobile NLD					
BTSOL NLD Noida	0.00%	0.00%	0.00%	0.00%	0.00%
Idea					10.57%
Tata					38.88%
VSNL Bhopal					5.31%
Andhara Pradesh					
POI with Private Operators					
Airtel, Hyd	0.00%	0.00%	0.00%	0.00%	0.00%
Hutch Hyd	0.00%	0.00%	15.80%	0.00%	0.00%
BTSOL NLD Hyd	0.60%	0.00%	0.90%	0.60%	0.00%
VSNL NLD Chennai Mobile	8.70%	5.50%	0.00%	0.00%	0.00%
POI with BSNL					
BSNL Kurnool	1.30%	0.80%	2.70%	6.40%	18.20%
BSNL Guntur L2	0.00%	0.00%	0.00%	17.30%	22.91%
BSNL Ananthapur	5.30%	1.70%	6.20%	5.10%	14.20%
BSNL Rajmundry L2	0.00%	0.00%	0.00%	11.90%	22.18%
Vizag L2				0.90%	0.00%
BSNL Nalgonda	24.50%	19.50%	25.70%	18.00%	13.60%
BSNL Karimnagar	17.60%	17.20%	18.60%	18.30%	10.50%
BSNL Khammam	0.70%	0.30%	0.00%	0.50%	0.60%
BSNL Mobile Mehboobnagar	6.90%	2.10%	2.30%	4.80%	3.30%
BSNL STD HYD		1.50%			NA
BSNL Eluru L-11	0.50%	0.00%	0.16%	0.20%	2.05%
BSNL Mobile Ongole L2	0.00%	0.00%	0.00%	0.00%	0.13%
BSNL Sangareddy	0.00%	0.00%	0.00%	0.00%	1.30%
Cucappah		2.50%	0.00%	0.00%	0.00%
UP - E					
POI with BSNL					
Lucknow	24.00%	17.74%	0.00%	0.00%	0.00%
Basti	14.00%	11.03%	0.00%	0.00%	0.00%
Sahajanpur				4.31%	5.32%
Gonda				3.01%	9.93%
Raibareilly					4.45%
POI with BSNL NLD					
Lucknow	56.00%	46.29%	25.10%	0.00%	0.00%
BSNL_Lucknow L1 Tax	16.00%	32.33%	20.36%	0.00%	8.32%
VARANASI	88.00%	85.49%	0.00%	1.66%	0.00%
BASTI	93.00%	89.69%	0.00%	0.00%	0.00%
MP & Chhattisgarh					
POI with BSNL					
Jabalpur_Tandem	6.51%	0.00%	0.00%	0.00%	0.00%

Raipur_Tandem	1.04%	1.00%	0.00%	0.00%	0.00%
Bilaspur_Tandem	6.39%	7.00%	3.20%	0.48%	0.20%
POI with BSNL - NLD					
Bhopal	6.02%	0.02%	0.61%	5.02%	13.70%
Jabalpur	6.27%	0.05%	0.00%	0.00%	0.00%
Raipur	2.55%	3.70%	0.00%	0.00%	0.00%
Indore	1.97%	0.06%	0.00%	0.00%	0.00%
Gwalior	16.00%	0.00%	0.00%	0.00%	0.00%
Bilapur L2	32.05%	32.70%	36.82%	0.54%	0.00%
Itarsi			1.80%	2.87%	0.00%
Maharashtra					
POI with BSNL					
Baramati				1.00%	1.00%
Himachal Pradesh					
POI with BSNL					
Shimla-TAX-FWP	51.73%	64.72%	64.36%	42.05%	0.00%
Kullu Tax	0.00%	0.00%	1.81%	0.00%	0.00%
Mandi Tax	0.00%	0.00%	1.32%	0.00%	0.00%
Hamirpur Tax Mob NLD				1.00%	5.00%
POI with other operators					
Reliance Local			2.55%	0.00%	0.00%
VSNL NLD			1.89%	0.00%	2.00%
Kerala					
POI with BSNL					
Thrissur	5.82%	3.27%	0.00%	0.00%	0.00%
Kottiyam	24.71%	8.06%	0.00%	0.00%	0.00%
Allepey	1.70%	0.31%	0.00%	0.00%	0.00%
POI with other operators					
Palakkad Fixed NLD	6.48%	4.42%	2.22%	0.00%	0.00%
VSNL, Ernakulam NLD	0.00%	0.00%	0.00%	0.00%	0.00%
Airtel_Kerala _ MSC-1	0.00%	0.00%	0.00%	0.00%	0.00%
Chennai VSNL,Kerela	0.00%	0.00%	0.00%	0.00%	0.00%
Chennai VSNL, Ernakulam	0.00%	0.00%	0.00%	0.00%	0.00%
Kolkata					
POI with BSNL					
Central OCB Tandem	NA		NA		NA
BSNL Sakia (mobile)	NA	44.37%	NA	31.09%	18.83%
BSNL COT(Mobile)	NA	32.55%	NA	NA	NA
BSNL COT Fix	NA	0.00%	36.22%	NA	NA
BSNL Sakia Fix	NA	34.72%	42.30%	15.32%	2.33%
BSNL SOT(Mobile)	NA	20.28%	16.36%	NA	NA
BSNL NOT(Mobile)	NA	10.53%	2.72%	NA	NA
POI with NLD Fixed Operators			NA	NA	NA
VSNL Kol		8.12%	9.24%	0.34%	0.16%
VSNL Bhopal		16.63%	69.35%	0.23%	3.15%
BTSOL Kol		1.63%	0.97%	NA	17.24%
RIL NLD		51.60%	2.53%	0.00%	12.60%
TBN EWSD Mobile					4.76%
TTSL Fixed Local Traffic					
BSNL SOT(Fixed)		1.85%	NA	NA	NA
BSNL HOT		1.11%	NA	NA	NA
TBN EWSD TANDEM		3.91%	5.09%	NA	11.79%
HUTCH WB		0.91%	5.49%	0.48%	3.16%
POI with Private Operators					

Airtel Kol (Mobile)	NA		0.00%	NA	0.00%
VSNL BHOPAL	NA	14.75%	NA	NA	NA
Airtel WB Fix	NA	0.01%	0.92%	NA	0.20%
Hutch Kol GMSC2	NA	0.00%	0.00%	NA	NA
RIL NLD	NA	1.40%	2.53%	NA	0.00%
RIL Local	NA	2.22%	6.05%	NA	NA
TTSL WB Local (Mobile)	NA	51.78%	23.24%	NA	22.83%
TTSL WB Local Fix local	NA	0.00%	NA	NA	1.49%
VSNL	NA	14.75%	NA	NA	NA
VSNL, KOL (Mobile)	NA	1.89%	NA	NA	NA
West Bengal					
POI with BSNL					
Asansol - NLD	5.60	2.20%	0.10%	0.00%	0.00%
Krishna Nagar - Mobile	0.00	0.00%	0.01%	0.00%	0.00%
Kharagpur	0.00	0.00%	0.00%	0.00%	0.00%
Krishna Nagar, NLD	0.00	0.00%	0.00%	0.00%	0.00%
Krishna Nagar, Fixed	1.75	2.45%	0.00%	0.00%	6.73%
Suri, Mobile	1.60	17.80%	0.00%	0.00%	0.00%
Suri, NLD, fixed	5.74	43.95%	0.00%	0.00%	0.00%
Suri, fixed					10.22%
Behrampur, Fixed Local	5.40	47.50%	0.50%	0.00%	0.00%
Behrampur NLD Fixed		0.65%	0.00%	0.00%	0.00%
Bolpur	1.10	0.00%	0.00%	0.00%	0.00%
Asansol - NLD Mobile		22.80%	0.10%	0.00%	2.30%
POI with Private Operators					
Airtel	0.00%	0.00%	0.00%	0.00%	NA
Hutch	0.00	0.00%	0.00%	0.00%	NA
Chennai					
POI with BSNL					
Anna Road Tandem(fix)	31.41%	4.16%	0.23%	0.17%	0.16%
KK Nagar Tandem(fix)	37.99%	5.38%	0.00%	0.20%	0.16%
Flower Bazar Tandem	34.78%	4.19%	0.24%	0.27%	0.21%
Kachipuram					16.43%
POI with Private Operators					
Aircel Coimbatore					10.43%
Airtel Coimbatore					1.35%
Tamilnadu					
POI with BSNL					
Cellone Coimbatore					NA
Kanchipuram	10.35%	18.71%	26.92%	14.22%	0.00%
Kumbakonam	5.17%	20.68%	0.00%	0.00%	0.00%
Virudunagar_Local	2.07%	5.58%	0.00%	0.00%	0.00%
Coimbatore Tax NLD		0.70%	0.00%	0.64%	0.64%
POI with BSNL NLD					
Dharmapuri_TAX	26.85%	0.00%	0.00%	0.00%	0.00%
Virudunagar_TAX	1.64%	1.51%	0.00%	0.00%	0.00%
ERODE_Tax		0.00%	0.00%	0.00%	0.00%
POI with Private Operators					
Aircell Coimbatore Fixed	0.72%	12.87%	14.54%	5.73%	13.85%
Aircell Coimbatore Mobile				1.53%	7.60%
Bharti Local Madurai		0.00%	0.00%	0.00%	0.00%
Reliance Coimbatore		0.00%	0.00%	0.00%	0.00%

POIs congestion Report of M/s Reliance Infocom Limited for the months of Jan, 2006 - May, 2006

Service area and POIs	Benchmark >0.5%				
	Jan	Feb	Mar	Apr	May
Madhya Pradesh					
POI with BSNL					
Bhopal	3.30%	5.70%	17.20%	20.70%	15.40%
Bilaspur	5.10%	7.20%	10.20%	9.60%	7.20%
Raigarh					15.90%
Betul	13.90%	10.80%	0.00%	0.00%	0.00%
Jhabua	0.80%	2.50%	2.40%	0.00%	0.00%
Raipur	10.40%	11.00%	15.70%	12.00%	0.00%
Shahdol	18.10%	24.70%	22.50%	11.90%	12.10%
Itarsi	2.90%	5.40%	0.10%	0.00%	0.10%
Morena	7.60%	11.20%	16.10%	21.80%	0.00%
Dhar		1.90%	3.80%	0.00%	0.00%
Khandwa		1.90%	3.30%	5.60%	6.80%
Sanguja, Ambikapur			14.70%	12.50%	17.40%
Basic POIs					
Bhopal				3.60%	4.00%
Damoh					0.90%
Durg					100.00%
Indore				100.00%	0.00%
Narsingpur				51.10%	60.90%
Rewa				6.90%	0.10%
POI with other Operators					
Idea	5.00%	5.10%	2.80%	6.30%	2.60%
Bharti		4.30%	0.00%	0.40%	0.00%
RTL	0.00%	0.00%		0.00%	0.00%
Andhra Pradesh					
Basic POIs					
Andole					1.20%
Annakapalle				2.00%	0.00%
Armoor				29.30%	31.40%
Chivela					1.30%
Huzurabad					2.60%
Hyderabad				12.70%	11.10%
Karimnagar					0.70%
Ibrahampatnam				0.60%	0.00%
Kurnool				2.20%	13.30%
Mulug					1.00%
Narasampet				9.40%	10.60%
Narsaraopet					2.40%
Pargi				2.50%	8.30%
Peddapalli				2.80%	3.20%
Repalle					1.50%
Siddipet				1.00%	2.30%
Vijayawada					0.90%
Vikrabad				24.70%	0.80%
POI with BSNL					
MAHABUBNAGAR	23.10%	9.10%	4.50%	6.30%	6.20%

Kurnool	0.00%	0.00%	0.00%	0.50%	2.10%
NALGONDA	0.00%	0.00%	0.00%	0.00%	0.00%
Vijayagram					8.70%
Hyderabad L1 TAX 1	10.20%	6.10%	0.00%	0.00%	0.00%
Sangareddy	19.70%	13.70%	0.30%	0.20%	0.10%
Adilabad	0.70%	1.10%	0.00%	6.80%	0.00%
Srikulam	4.10%	0.00%	0.00%	0.00%	0.00%
POI with other Operators					
Idea	0.10%	0.30%	1.30%	0.30%	0.80%
Bharti	0.00%	2.00%	0.00%	0.70%	1.80%
Hutch			0.90%	0.00%	0.00%
Bihar					
POI with BSNL					
Darbanga	12.50%	7.20%	9.70%	0.90%	2.30%
GAYA	0.00%	0.00%	0.00%	0.00%	0.00%
Patna	20.50%	27.50%	6.80%	5.00%	1.40%
Chhapra	0.80%	0.00%	0.00%	0.00%	0.00%
Patliputra L2 Tax					8.60%
Patna Rajendra Nagar L1 Tax					1.70%
Cellone					18.10%
Basic POIs					
Darbanga					1.00%
Nawada				1.00%	0.01%
POI with other Operators					
RTL	5.20%	3.60%	0.00%	0.00%	0.01%
Tata	1.00%	7.00%	0.00%	0.00%	0.01%
Bharti	3.70%	5.10%	0.30%	2.80%	4.80%
Karnataka					
POI with BSNL					
BELGAUM	30.90%	0.00%	0.00%	0.30%	0.70%
Bijapur	9.40%	0.00%	0.00%	0.00%	0.00%
cellone				4.60%	5.50%
Basic POIs					
Bangerpet					0.70%
Bhatkal					2.10%
Bijapur					0.80%
Chanaryapatna					5.70%
Gokak				4.60%	8.10%
Goribindnur					0.60%
Haveri					1.10%
Hublie				1.70%	0.60%
Kolar				1.50%	6.00%
Kolegal					1.00%
Kunigal					10.50%
Malavalli				0.60%	0.00%
Sidlaghatta				0.70%	0.60%
Shorapur					5.10%
Tumkur				2.50%	4.20%
POI with other Operators					
Hutch	0.00%	0.00%	0.00%	0.00%	
Kerala					
POI with BSNL				8.30%	7.20%
Cellone					
Basic POIs					

Alathur				1.50%	4.80%
Ernakulam					0.60%
Mannarghat					1.50%
Shoranampur				26.90%	35.40%
Uppala				12.10%	14.40%
Maharashtra					
POI with BSNL					
Akola				1.10%	0.00%
AMRAVATI	39.40%	14.30%	15.30%	16.40%	11.60%
BULDHANA	42.00%	54.10%	60.50%	10.00%	31.80%
Dhulia	13.70%	29.70%	8.20%	12.00%	0.00%
Bhir		4.20%		0.00%	0.00%
Jalgaon	2.40%	10.20%	10.70%	12.20%	4.70%
JALNA	0.00%	0.00%	0.30%	0.70%	1.20%
Latour	4.20%	0.00%	0.00%	0.20%	1.20%
Wardha					1.70%
Nagpur sakardara L1 TAX			0.60%	0.90%	0.00%
RATNAGIRI	27.10%	0.00%	0.00%	0.00%	0.00%
Sangli	3.80%	13.30%	11.30%	17.50%	0.00%
Prabhani	2.40%	0.20%	1.60%	1.60%	0.00%
Yavatmal			0.90%	5.90%	9.30%
Cellone					9.10%
Basic POIs					
Ahamednagar				58.80%	0.80%
Akola				1.10%	0.20%
Alibagh					0.60%
Barsi				0.60%	0.00%
Bhusawal				1.10%	0.00%
Chiplun				1.40%	0.30%
Hinganghat					19.10%
Jalgaon				13.30%	8.80%
Jalna				51.20%	0.10%
Kalyan				15.00%	0.30%
Khopoli				1.50%	0.00%
Kopargaon				28.00%	0.10%
Latour				35.30%	2.40%
Naded				32.40%	0.00%
Niphad					7.10%
Pandharpur					2.60%
Panji				3.50%	0.60%
Prabhani					0.80%
Pune				1.20%	95.40%
Pune					0.60%
Rahuri				1.00%	0.80%
Raigurunagar				4.50%	3.90%
Ratanagiri				3.30%	0.00%
Sangamner				30.60%	1.90%
saswad				3.60%	1.50%
Shrirampur				17.90%	0.00%
Wai				5.50%	4.00%
Wardha				1.00%	1.30%

Yavatmal					0.70%
POI with other Operators					
BPL	2.90%	0.00%	0.00%	0.00%	0.00%
Idea	0.00%	0.00%	0.00%	0.80%	0.00%
Bharti				2.70%	0.20%
Orissa					
POI with BSNL					
Cuttack	0.00%	1.80%	2.00%	4.20%	0.00%
Behrampur	0.00%	0.00%	0.60%	4.40%	0.10%
Cellone					2.80%
Basic POIs					
Balasore				37.00%	47.80%
Balasore, B30				78.60%	83.50%
Behrampur				71.40%	64.70%
Bhadrak				77.90%	74.40%
Bhuvneshwar				1.60%	1.30%
Chhatrapur				7.70%	10.70%
Dhanmandal					2.00%
Jajpur town				48.60%	57.50%
Khurda				8.00%	4.40%
Puri				1.80%	15.50%
Sambalpur				39.30%	32.80%
Soro				6.50%	2.70%
POI with other Operators					
Bharti	14.30%	7.90%	0.00%	0.00%	0.10%
RTL	0.00%	0.00%	0.00%	0.00%	0.00%
Aircel			7.20%	15.30%	0.10%
Rajasthan					
POI with BSNL					
ALWAR	42.40%	17.60%	7.50%	7.10%	3.20%
CHITTORGARH	0.00%	0.00%	0.00%	0.00%	0.00%
JAIPUR	8.90%	4.80%	1.10%	0.70%	0.80%
Tonk	2.00%	4.10%	5.00%	0.60%	3.20%
Basic POIs					
Ajmer				5.20%	3.50%
Alwar				82.40%	80.90%
Chittorgarh				4.90%	0.60%
Churu				100.00%	NA
Jhalawar				4.10%	3.50%
Jhunjhunu				4.40%	0.80%
Jhunjhunu					1.20%
Kotputli				1.10%	0.70%
Nagaur				2.60%	2.50%
Sikar				1.40%	0.90%
Sikar					1.00%
Tonk				2.70%	0.00%
Tamilnadu					
POI with BSNL					
Thanjavur	0.00%	0.00%	0.00%	0.00%	0.00%
Coimbatore	2.80%	4.40%	0.80%	0.00%	0.00%
Cellone				19.10%	16.50%
Basic POIs					
Ariyaloor				1.10%	0.00%
Coimbatore				69.10%	46.40%

Coimbatore, B20				26.30%	4.50%
Hasur				1.20%	1.50%
Kallkuruchi				15.20%	14.30%
Mannarguri				1.20%	0.00%
Mettupalayam				3.10%	1.50%
Ootacamund				0.60%	0.10%
Palacode				0.60%	0.00%
Palladum					0.70%
Pappanasam					3.00%
Pattukotaya					0.80%
Perundurai					0.60%
Paramblure				11.30%	10.60%
Rajapalayam				1.10%	2.60%
Thiruthani					1.00%
Thiruraipundi				6.20%	2.60%
Vallyoor				0.60%	0.00%
Vellore				68.50%	53.10%
Virudhachalam				1.80%	3.00%
POI with other Operators					
Aircel	1.40%	0.00%	0.00%	0.10%	0.00%
Bharti	3.50%	3.40%	0.00%	0.00%	0.00%
UP - E					
POI with BSNL					
AZAMGARH	67.50%	5.90%	13.30%	12.20%	21.20%
Faizabad	7.10%	22.40%	19.20%	8.60%	8.90%
Barabanki	4.30%	13.20%	15.30%	8.20%	7.20%
Pratapgarh	10.30%	15.80%	27.10%	14.10%	30.40%
Lucknow L1 TAX Indira Nagar	8.00%	11.70%	4.30%	5.40%	3.90%
LUCKNOW L1 TAX Kiserbagh	24.70%	12.10%	1.80%	0.00%	0.90%
Lakhimpur Khiri	27.10%	35.70%	49.50%	30.00%	11.10%
Basti	0.00%	0.80%	1.40%	2.70%	1.60%
Gazipur					1.20%
Hardoi					9.60%
Balia					3.10%
Cellone				27.50%	66.50%
Basic POIs					
Allahabad				3.60%	1.00%
Azamgarh				1.70%	0.20%
Bhadohi					100.00%
Kanpur				100.00%	0.00%
Kanpur, B0				3.20%	0.00%
Mirzapur					2.20%
Shahajahanpur				1.50%	42.20%
Shahajahanpur, B30				16.80%	3.80%
Varanasi					3.00%
Varanasi					1.30%
POI with other Operators					
Bharti	0.50%	0.60%	1.00%	1.10%	1.30%
Hutch		0.60%	4.50%	1.10%	0.40%
Tata					1.30%
UP - W					
POI with BSNL					
Agra	2.10%	1.90%	2.90%	1.20%	11.70%

Bareilly	0.00%	0.00%	0.00%	0.00%	0.00%
ETAH	0.00%	0.20%	1.20%	0.90%	0.00%
NAINITAL	34.80%	30.00%	35.90%	35.00%	51.40%
Moradabad				2.10%	0.00%
Cellone				2.00%	9.50%
Basic POIs					
Amroha				42.20%	0.00%
Bareili				19.30%	0.00%
Chhata				0.60%	0.30%
Dehradoon					1.50%
Deoband				8.90%	2.00%
Haldwani				47.40%	13.80%
Janasat , Khatauli				100.00%	0.00%
Meerut				70.20%	67.00%
Meerut, B30				1.60%	0.00%
Modinagar				1.10%	0.50%
Moradabad				37.60%	5.20%
Rampur				4.30%	0.60%
Rampur, B30				1.00%	0.00%
Shaharanpur				10.60%	0.00%
POI with other Operators					
Bharti		6.90%	7.40%	7.60%	0.10%
Escotel	0.00%	0.00%	0.00%	2.40%	0.20%
Hutch	1.10%	5.20%	10.10%	7.20%	0.10%
West Bengal					
POI with BSNL					
Suri (Bolpur)	0.00%	0.00%	0.00%	0.00%	0.10%
Behrampur		1.10%		4.40%	0.10%
Asansol	8.70%	6.80%	6.00%	1.80%	0.00%
Bankura				1.70%	2.70%
Cellone					2.30%
Basic POIs					
Bankura				18.40%	2.40%
Basirhat				59.80%	36.30%
Bongaon				25.00%	49.60%
Burdwan				29.00%	45.30%
Calcutta					100.00%
Calcutta					0.70%
Calcutta					29.30%
Gangtok					46.70%
Gangtok					26.20%
Jalpaigudi				4.00%	0.30%
Jalpaigudi, B70				100.00%	0.00%
Kharagpur				3.50%	0.00%
Krishnanagar				1.30%	0.20%
Krishnanagar, B30				54.10%	0.00%
Siliguri					0.70%
POI with other Operators					
Hutch	0.00%	0.10%	0.50%	0.00%	2.20%
Tata	1.70%	0.00%	0.30%	1.90%	0.10%
Delhi					
POI with other Operators					
Tata	No Cong	No Cong	No Cong	0.80%	0.00%

Gujarat					
POI with other Operators					
Hutch	No Cong	No Cong	No Cong	2.00%	0.00%
Basic POIs					
Ahamedabad Gandhinagar					4.30%
Amod				5.60%	6.10%
Anand					100.00%
Bharuch				100.00%	0.00%
Deesa				1.30%	0.70%
Jamnagar				19.40%	10.90%
Kapadwanj				1.10%	1.70%
Mahuva					1.30%
Khambhat				1.40%	0.20%
Mehmadabad				1.00%	0.80%
Modasa				0.60%	0.20%
Navsari					55.70%
Patan				0.70%	0.60%
Porbander				2.00%	0.00%
Rajkot				55.70%	0.00%
Sohor				1.90%	0.40%
Chennai					
POI with BSNL					
Chennai Cellone				4.10%	2.20%
Ard Tandem BSNL - GSM	2.10%	0.00%	0.00%	0.00%	
Basic POIs					
Bhavani					1.20%
Dharampuri					100.00%
Panipet					0.90%
Chennai				0.90%	0.10%
Cuddalore				1.10%	0.00%
Kachipuram				1.20%	0.10%
Kachipuram B3JKCHO				100.00%	0.00%
POI with other Operators					
Bharti	0.00%	0.00%	0.00%	0.00%	0.00%
Mumbai					
POI with BSNL					
Fountain G			1.10%	0.00%	0.00%
Bhayander					0.90%
Basic POIs					
Mumbai A00				19.10%	37.70%
Mumbai A20				2.40%	0.00%
Mumbai A21				1.10%	0.00%
POI with other Operators					
Hutch		1.20%	0.00%	0.00%	0.90%
Bharti	0.00%	0.20%	0.00%	0.00%	0.00%
Haryana					
POI with BSNL					
Jind					1.10%
POI with other Operators					
Idea	0.00%	0.00%	0.00%	0.00%	0.00%
Basic POIs					
Charkhidadri				2.00%	0.00%
Fatehabad				1.10%	1.00%

Jhajjar				1.00%	0.40%
Kurushetra				0.80%	0.00%
Rewari				1.90%	0.00%
Punjab					
POI with other Operators					
Hutch	0.00%	1.40%	0.00%	0.00%	0.00%
Cellone				13.50%	12.60%
Basic POIs					
Ludhiana				100.00%	0.00%
Hoshiarpur					100.00%
Ropar				1.10%	0.10%
Sunam					1.60%
Tarantaran					100.00%
Himachal Pradesh					
POI with BSNL					
Shimla	9.70%	18.20%	12.80%	15.30%	12.70%
Kangra, Dharamshala			3.50%	4.80%	8.00%
Kolkatta					
POI with other Operators					
Tata		2.80%	0.00%	0.00%	0.00%
Hutch	0.70%	0.00%	0.00%	0.00%	0.00%

POIs Congestion Report of M/s Reliance Telecom Limited for the months of Jan, 2006 - April, 2006

Name of Circle & POIs	Benchmark >0.5%				
	Jan	Feb	Mar	Apr	May
Madhya Pradesh					
BHOPAL	35.00%	34.74%	41.00%	42.50%	41.60%
UJJAIN	0.20%	0.08%	0.03%	0.00%	0.02%
KHARGONE	8.00%	15.65%	23.10%	13.90%	11.20%
CHINDWARA	0.50%	0.78%	0.93%	0.00%	0.00%
DURG	0.03%	0.18%	0.10%	0.14%	0.41%
BALAGHAT	1.52%	8.77%	1.32%	0.00%	0.00%
Guna	0.90%	0.42%	0.38%	0.15%	0.21%
Khandwa	0.30%	2.77%	6.22%	5.37%	0.00%
Dhar	NA	0.75%	0.83%	1.42%	2.66%
Itarsi	1.20%	0.96%	1.55%	0.39%	1.01%
Vidisha					0.56%
Satna	0.00%	0.84%	0.04%	0.12%	0.25%
Betul	0.40%	1.42%	2.63%	0.00%	0.00%
Seon	0.00%	1.80%	0.08%	0.08%	0.00%
Raipur	0.03%	1.24%	1.30%	20.48%	25.20%
Bilaspur	0.36%	1.45%	1.92%	0.15%	0.15%
POI With other Operators					
Idea Cellular, Raipur	4.91%	23.66%	16.10%	3.60%	7.65%
Airtel Mobile, Indore	1.00%	0.70%	16.30%	3.90%	0.00%
Idea , Indore	4.60%	13.73%	0.40%	4.20%	0.00%
Airtel Fix, Indore	No Cong		2.30%	2.90%	2.30%
Bihar					
PATNA	3.51%	3.57%	3.57%	3.91%	3.93%
GAYA	22.02%	22.13%	5.35%	5.76%	0.00%
MUZAFFARPUR	0.00%	0.00%	0.00%	0.00%	0.00%
BHAGALPUR	21.78%	22.01%	22.01%	22.43%	22.47%

DARBHANGA	6.43%	6.49%	6.49%	6.97%	0.00%
SAHARSA	46.11%	46.23%	46.23%	47.93%	47.71%
MOTIHARI	37.08%	37.26%	37.26%	38.19%	37.88%
MUNGER	0.00%	0.00%	0.00%	0.00%	0.00%
JAMSHEDPUR	0.00%	0.00%	0.00%	0.00%	0.00%
DHANBAD	0.00%	0.00%	0.00%	0.00%	0.00%
HAZARIBAGH	0.00%	0.00%	0.00%	0.00%	0.00%
POI With other Operators					
Ranchi, MSC RIC		0.00%	0.00%	0.00%	0.00%
Airtel local	0.00%	2.53%	0.00%	0.00%	0.00%
Tata walky	0.00%	7.01%	1.81%	1.87%	1.79%
Tata Fix	2.25%	5.23%	2.23%	2.33%	2.21%
West Bengal					
COOCHBEHAR	0.69%	0.57%	0.01%	0.01%	0.00%
Kharagpur	0.00%	0.00%	0.00%	0.00%	0.00%
Gangtok	0.00%	0.00%	0.00%	0.00%	0.00%
RAIGANJ	0.00%	0.00%	0.00%	0.00%	0.00%
ASANSOL	0.04%	0.00%	0.00%	1.65%	13.97%
Himachal Pradesh					
SHIMLA	18.16%	23.18%	35.56%	37.03%	37.59%
SOLAN	0.80%	2.08%	11.79%	14.47%	15.01%
Mandi					0.68%
DHARAMSHALA	23.84%	32.20%	35.40%	34.08%	35.16%
HAMIRPUR	29.07%	35.73%	39.06%	39.24%	38.60%
POI With other Operators					
Airtel Shimla					0.74%
Assam					
BSNL GUWAHATI	1.42%	0.04%	0.04%	0.00%	0.00%
BSNL Jorhat	1.34%	0.00%	0.01%	0.10%	0.20%
BSNL Nagaon	16.94%	51.96%	49.36%	56.10%	47.40%
BSNL Tezpur	46.81%	78.24%	81.12%	1.40%	72.90%
Dhibrugarh	45.29%	68.40%	54.86%	2.30%	6.00%
POI With other Operators					
RIL				0.80%	0.00%
Airtel Guwahati	21.48%	1.34%	0.07%	0.00%	0.80%
Aircel Guwahati	0.28%	1.68%	3.23%	0.00%	0.30%
North East					
Shillong BSNL	0.44%	16.71%	24.32%	43.77%	40.94%
Agartala				0.89%	0.00%
POI With other Operators					
Airtel Shillong	34.28%	64.15%	82.03%	17.41%	17.85%
Reliable Internet Services Ltd, Kolkatta					
POI With other Operators					
RTL Durgalpur					53.00%

POI Congestion Report of M/s Idea Cellular Limited for the months of Jan, 2006 - May, 2006

Name of POIs	Benchmark >0.5%				
	Jan.	Feb	Mar	Apr	May
Madhya Pradesh					
Idea - BSNL					

Bhopal	28.45%	24.56%	28.56%	30.53%	28.58%
Ujjain					6.89%
Dewas					9.73%
Khargone	66.00%	72.98%	73.03%	72.67%	72.82%
Dhar					11.74%
Shahjapur	51.32%	65.82%	78.62%	79.88%	80.73%
Sagar	2.49%	17.82%	21.26%	28.75%	37.67%
Raipur	40.11%	9.42%	0.00%	37.20%	29.11%
Rewa	1.81%	7.97%	4.19%	12.40%	7.40%
Morena	34.88%	40.03%	34.81%	52.97%	54.87%
Khandwa	26.88%	33.44%	42.45%	36.10%	3.75%
Biora	4.72%	8.56%	19.74%	29.51%	36.85%
Raigarh	2.12%	5.81%	0.00%	0.00%	0.00%
Narsingpur	16.47%	21.63%	27.45%	37.14%	47.06%
Shahdol	51.92%	58.37%	57.42%	55.57%	65.33%
Itarsi		5.74%	2.18%	0.00%	4.76%
Betul		0.66%	0.00%	0.00%	24.57%
Ambikapur		19.72%	11.74%	18.26%	27.91%
Satna		12.91%	3.21%	0.00%	13.89%
Damoh		3.63%	0.00%	0.00%	0.00%
Sidhi		4.25%	10.75%	25.65%	20.80%
Andhra Pradesh					
(i) BSNL					
Adilabad					1.31%
KURNOOL	27.13%	34.20%	0.00%	0.00%	0.00%
MAHABOONAGAR	0.00%	0.08%	0.05%	0.00%	2.19%
NALGONDA	10.50%	2.46%	0.00%	0.00%	0.00%
CUDDAPAH	0.00%	NA	NA	NA	NA
OCB Secundrabad TAX	4.45%	2.20%	0.22%	0.43%	1.90%
Maharashtra					
Idea - BSNL					
Ahmednagar	1.07%	4.66%	0.00%	0.02%	0.23%
Akola			1.24%	2.30%	1.69%
Sangli	1.95%	5.58%	0.24%	1.15%	2.84%
Jalna	0.00%	0.00%	0.01%	0.09%	0.00%
Nagpur	0.00%	0.00%	0.09%	0.23%	0.00%
Ratnagiri	0.00%	0.00%	0.00%	0.00%	0.00%
Pune	0.12%	0.84%	2.61%	0.31%	0.20%
Amravati		1.33%	0.00%	0.00%	0.01%
Satara		1.55%	4.51%	3.91%	0.45%
Khamgaon				3.90%	4.20%
POI with private operators					
Airtel	0.00%	6.53%	0.00%	0.14%	0.00%
Delhi					
POI with NLD operators					
BSNL	0.00%	0.00%	0.00%	0.00%	0.78%
BTSOL	0.00%	0.00%	0.00%	0.00%	0.67%
Gujarat					
Idea - BSNL					
ANAND	0.00%	0.00%	0.00%	0.00%	0.00%
Mehsana	0.00%	2.55%	0.00%	0.00%	0.00%
Himmatnagar	0.00%	0.00%	0.00%	0.00%	0.00%
AMRELI	12.30%	0.00%	0.00%	0.00%	0.00%
Ahamdabad GBT	5.38%	6.48%	0.00%	0.00%	0.00%

POI with private operators					
Idea VSNL NLD	4.53%	0.00%	0.00%	5.40%	0.00%
Idea_Airtel Rajkot	0.00%	0.00%	0.00%	0.00%	0.00%
Idea _ BTSOL NLD Gandhngr		10.50%	0.00%	0.00%	0.00%
Kerala					
BSNL					
Alleppy	0.00%	0.00%	0.00%	0.00%	0.00%
Kannur	0.00%	0.00%	NA	0.00%	0.00%
BSNL NLD	0.00%	0.10%	0.03%	3.09%	5.01%
Tiruvalla	0.39%	0.64%	0.00%	0.00%	0.00%
Ernakulam	12.65%	10.02%	4.38%	1.80%	7.96%
Jkollam					1.28%
Pallakad		0.77%	0.00%	0.37%	1.89%
UP(W)					
Idea - BSNL					
Mainpuri	0.00%	0.00%	0.00%	0.00%	0.00%
Modinagar	6.03%	NA	0.00%	0.00%	0.00%
Bijnaur	35.91%	39.90%	0.00%	0.00%	0.00%
Pilibhit	15.48%	18.66%	15.84%	0.25%	0.00%
Haldwani	0.00%	4.97%	2.15%	0.02%	0.00%
BSNL NLD Agra	0.00%	1.52%	0.00%	0.01%	0.00%
Haridwar	0.48%	0.00%	0.00%	0.00%	0.00%
POI with private operators					
Agra NLD	1.17%	0.90%	0.00%	0.00%	0.01%
Airtel - UPE	1.08%	9.44%	0.01%	0.00%	0.00%
Relaince	0.00%	0.00%	0.00%	0.00%	0.00%
Haryana					
POI with BSNL					
Gurgaon	3.38%	0.00%	0.00%	0.00%	0.00%
Sonepat	12.75%	18.78%	21.48%	1.53%	0.77%
Ambala Lvele 1 TAX	1.59%	6.62%	17.21%	7.21%	5.33%
Ambala Lvele 1 TAX (2)				7.28%	2.33%

POI Congestion Report of M/s Hutchisson Essar Mobile Services Limited for the month of Jan, 2006 - May, 2006					
Name of Circles & POIs	Benchmark >0.5%				
	Jan	Feb	Mar	Apr	May
Andhara Pradesh					
Hutch_Idea	0.00%	0.00%	0.00%	0.00%	0.00%
Hutch_Airtel	0.03%	1.27%	0.00%	0.00%	0.00%
Punjab					
POI with BSNL					
JALANDHAR	59.99%	0.00%	0.00%	0.00%	0.00%
Ropad	0.87%	0.33%	0.06%	0.00%	0.00%
Hoshiarpur	2.58%	1.27%	0.00%	0.00%	0.00%
Cellone BSNL				0.77%	0.11%
POI with Private Operators					
Spice, Jalandhar	0.23%	4.51%	0.00%	0.00%	0.00%
Spice, Chandigarh	0.33%	3.39%	0.00%	0.00%	0.00%
Gujarat					
POI with BSNL					
Aamreli	10.19%	81.78%	52.10%	62.49%	12.40%
Bhavnagar	2.14%	48.34%	0.00%	0.00%	0.00%

Mehsana	2.25%	58.37%	7.76%	21.29%	4.01%
Palanpur	10.81%	70.53%	89.59%	63.19%	56.25%
Godhra		4.87%	6.53%	5.47%	0.00%
Himmatnagar		35.30%	74.28%	87.16%	27.38%
Jamnagar		12.15%	23.14%	36.83%	17.64%
Surendernagar		3.57%	7.08%	0.00%	0.00%
Junagarh				5.46%	1.25%
Rajasthan					
POI with BSNL					
Sri Ganganagar	2.74%	1.55%	3.34%	5.06%	26.61%
Alwar	20.83%	16.49%	26.02%	38.64%	41.26%
Jhunjhunu			3.61%	9.13%	10.37%
Sirohi	33.24%	31.22%	54.35%	70.26%	67.69%
Nagaur	66.90%	69.45%	43.51%	57.69%	0.00%
Sw Madhopur	22.13%	26.85%	0.00%	4.00%	1.71%
Bharatpur	15.65%	40.15%	33.05%	17.69%	26.05%
Churu	0.00%	0.00%	0.00%	0.00%	0.01%
Sikar	6.00%	5.89%	26.92%	9.00%	0.00%
Jaipur	6.76%	0.00%	0.00%	0.00%	0.00%
Bikaner	1.20%	1.79%	0.62%	0.97%	2.73%
Jaisalmer				2.65%	25.57%
Barmer				15.23%	26.29%
UP East					
POI with BSNL					
Lucknow	49.00%	58.00%	47.00%	43.00%	27.00%
Sahajanpur		23.00%	19.00%	22.00%	3.00%
Faizabad	0.00%	0.00%	0.00%	0.00%	0.00%
Orai	0.00%	3.00%	25.00%	91.00%	0.00%
Gonda				32.00%	0.00%
Basti			4.00%	3.00%	5.00%
Baharaich				40.00%	12.00%
Pratapgarh	0.00%	0.00%	12.00%		0.00%
Sitapur	23.00%	52.00%	64.00%	72.00%	39.00%
Balia	56.00%	72.00%	65.00%	73.00%	55.00%
Deoria	0.00%	8.00%	6.00%		0.00%
Mau	0.00%	0.00%	2.00%	1.00%	4.00%
Azamgarh	51.00%	34.00%	0.00%		0.00%
Gazipur	76.00%	72.00%	88.00%	88.00%	87.00%
Hardoi	82.00%	6.00%	16.00%	29.00%	0.00%
Lakhimpur	11.00%	33.00%	61.00%	62.00%	0.00%
Cellone BSNL			78.00%	60.00%	41.00%
POI with Private Operators					
Reliance NLD				5.00%	22.00%
Reliance Mobile				3.00%	0.00%
UP West					
POI with BSNL					
Agra	0.00%	0.00%	NA	NA	0.00%
Haldwani	9.09%	0.00%	1.00%	3.71%	0.00%
Mainpuri	2.10%	0.00%	4.00%	0.00%	0.00%
Saharanpur	0.00%	0.00%	12.00%	0.00%	0.00%
Reliance Local	0.40%	0.00%	6.00%	0.00%	0.00%
West Bengal (ROB)					
POI with BSNL					
ASANSOL TAX	0.00%	0.00%	0.00%	0.00%	0.00%
KHRAGPORE TAX	0.00%	0.00%	0.00%	0.00%	0.00%

Bankura Tax		4.00%	0.00%	9.00%	0.00%
POI with other operators					
RIM Khargpur			5.00%	0.00%	0.00%
Airtel, Asansol	0.00%	0.00%	NA	0.00%	0.00%
Tata	0.00%	0.00%	NA	0.00%	0.00%
Reliance Infocom Fixed	4.00%	0.00%	0.00%	0.00%	0.00%
VSNL NLD					4.70%
Haryana					
POI with BSNL					
Ambala	0.00%	0.00%	0.00%	0.00%	0.00%
Cellone BSNL			1.28%	1.23%	0.00%
Maharashtra (BPL Mobile Cellular Ltd)					
POI with BSNL					
Jalgaon	1.54%	3.52%	2.63%	3.31%	1.81%
Nasik	0.35%	0.25%	0.31%	0.00%	0.00%
Panjim	0.97%	2.15%	1.36%	4.65%	0.02%
Satara	0.44%	0.80%	0.90%	0.05%	0.00%
Shakardara	0.59%	2.19%	0.01%	0.11%	0.14%
Kalyan	0.06%	0.23%	0.39%	0.06%	0.00%
Nagpur		1.84%	0.03%	0.07%	0.01%
Pune	12.99%	3.24%	3.34%	4.90%	4.98%
Tamilnadu (BPL Mobile Cellular Ltd)					
POI with BSNL					
Ganpath 3	0.00%	0.00%	0.00%	0.00%	0.00%
OCBTXOUT	0.00%	0.71%	0.00%	0.00%	0.00%
Vellore	0.00%	1.16%	0.00%	0.00%	0.00%
Kerala (BPL Mobile Cellular Ltd)					
POI with BSNL					
Kochi	0.00%	0.00%	0.00%	0.00%	0.02%
Calicut	0.78%	1.80%	0.06%	0.16%	0.02%
Alleppy	0.00%	0.00%	0.00%	0.00%	0.00%

POI Congestion Report of M/s Aircel Cellular Limited for the months of Jan, 2006 - April, 2006					
Name of POIs	Benchmark >0.5%				
	Jan	Feb	Mar	Apr	May
Chennai					
POI with BSNL					
BSNL Local	0.00%	0.00%	0.00%	0.00%	0.00%
BSNL NLD	2.00%	1.80%	1.00%	0.80%	0.80%
POI with other operators					
Airtel Local	0.40%	0.20%	0.00%	0.20%	0.00%
Hutch Local	1.00%	0.30%	0.40%	0.30%	0.00%
ROTN BPL	1.00%	0.00%	0.00%	0.00%	0.00%
ROTN TATA	0.50%	0.50%	0.50%	0.50%	0.20%
ROTN Reliance	10.00%	9.00%	5.20%	6.10%	5.60%
ROTN Airtel	5.00%	4.50%	3.60%	3.50%	0.00%
Tamilnadu					
POI with BSNL					
Coimbatore	8.06%	7.92%	6.41%	5.38%	0.00%
Dharmapuri	0.00%	0.00%	0.00%	0.00%	0.00%
Tanjore	29.50%	25.50%	20.50%	0.00%	0.00%
Cuddalore	0.00%	0.00%	0.00%	0.25%	0.20%

**POI Congestion Report of M/s Dishnet Wireless Limited for the month of Jan,
2006 -May, 2006**

Name of POIs	Benchmark >0.5%				
	Jan	Feb	Mar	Apr	May
Assam					
POI with BSNL					
Guwahati Tax NLD	0.96%	NA	23.60%	64.15%	62.12%
Guwahati Tax ILD				0.76%	28.32%
Guwahati Tax ILD Outgoing				NA	32.79%
Pre Paid IVR				0.74%	NA
Prepaid IVR Outgoing				0.74%	NA
Guwahati Tax NLD Outgoing				72.50%	78.26%
Guwahati Tax Electrical E1Incomming	91.57%	NA	NA	96.16%	NA
Guwahati, L1Electrical E1Outgoing		39.66%	7.19%	14.47%	NA
Nagaon L2		2.12%	12.77%	45.70%	39.89%
Nagaon L2 Outgoing				31.72%	18.85%
Guwahati local & NLD Outgoing	NA	NA	12.79%	0.00%	0.00%
Jorhat L2	NA	NA	7.18%	0.00%	0.00%
Jorhat L2 outgoing	NA	NA	5.20%	0.00%	0.00%
POI with other operators					
Airtel Guw					0.83%
Airtel Guw Outgoing					1.27%
Reliance Telecom	NA	11.68%	NA	1.46%	0.00%
Reliance Telecom, Outgoing				0.87%	0.01%
North East					
POI with BSNL					
Shillong Local & NLD	NA	NA	4.65%	51.07%	38.08%
Shilong Local & NLD outgoing			4.65%	51.07%	38.08%
Shillong TAX ILD incomming			1.59%	NA	0.00%
Shilling TAX ILD Outgoing			1.67%	NA	0.52%
VSNL POI NLD, Dimapur			24.40%	25.53%	17.30%
VSNL POI NLD Outgoing			24.40%	NA	17.30%
Dimapur MSC VSNL NLD	7.81%	24.74%	24.40%	NA	NA
RTL, Shillong Outgoing			6.13%	NA	NA
RTL, Shillong		67.74%	2.90%	NA	NA
Shillong Tax Level 1		90.39%	NA	NA	NA
Imphal			9.38%	22.38%	33.06%
Imphal Incomming			9.42%	0.00%	0.00%
Imphal Outgoing			9.16%	52.21%	31.87%
Imphal RBSC Outgoing				2.65%	NA
Orissa					
POI with other operators					
Aasansol TAX ILD					22.22%
Aasansol TAX ILD Outgoing					22.22%
Orissa					
POI with other operators					
Bhuvneshwar Airtel				39.12%	0.00%
Bhuvneshwar Airtel - Outgoing				8.24%	0.00%
Reliance Telecom Limited - Outgoing				0.97%	0.75%
Reliance Telecom Limited	NA	0.00%	0.00%	0.62%	1.38%
Reliance Infocom Limited Outgoing				70.98%	0.18%

Reliance Infocom Limited	NA	0.00%	0.00%	58.33%	0.21%
J & K	New service launched in J&K	New service launched in J&K			
POI with BSNL					
Jammu Tax Local NLD					12.48%
Jammu Tax Local NLD Outgoing					10.24%
Udhampur L2					67.32%
Udhampur L2 Outgoing					15.73%
Jammu Tax national Roamer			1.34%	19.40%	34.59%
Jammu Tax national Roamer, Outgoing			1.34%	19.40%	34.59%