

Information note to the Press
(Press Release No. 58/2009/QoS)
Telecom Regulatory Authority of India

For Immediate Release

Tel. No. : 011-23230404
Fax : 011-23213036
E-mail : advqos@traf.gov.in
Website : www.traf.gov.in

TRAI Releases Network/POIs congestion report of the Cellular Mobile Service Providers (CMSPs) for the months of January, February & March 2009

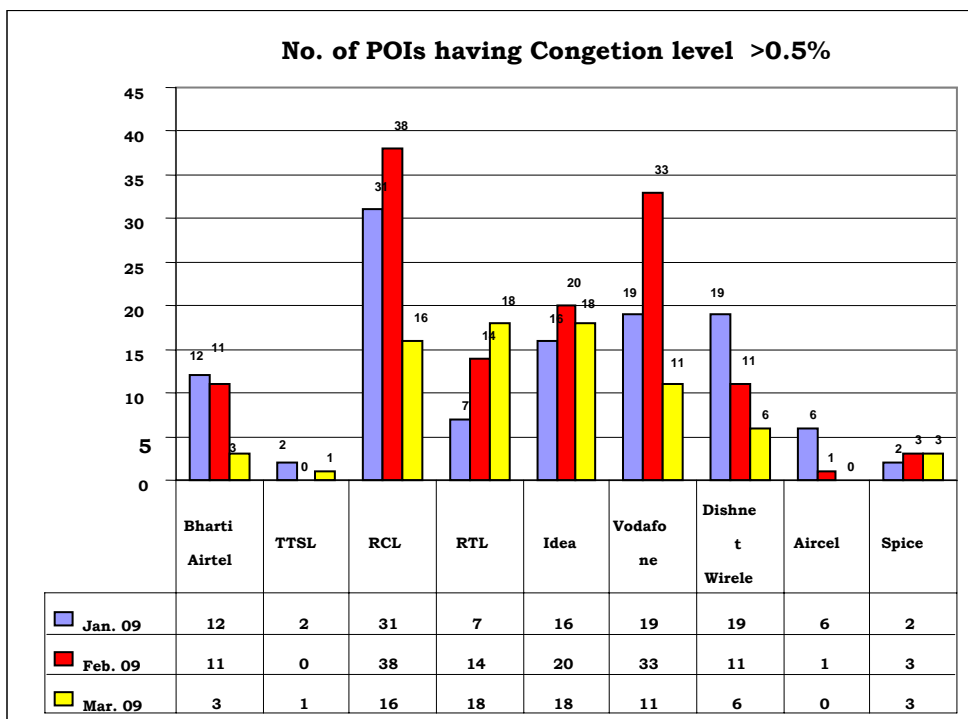
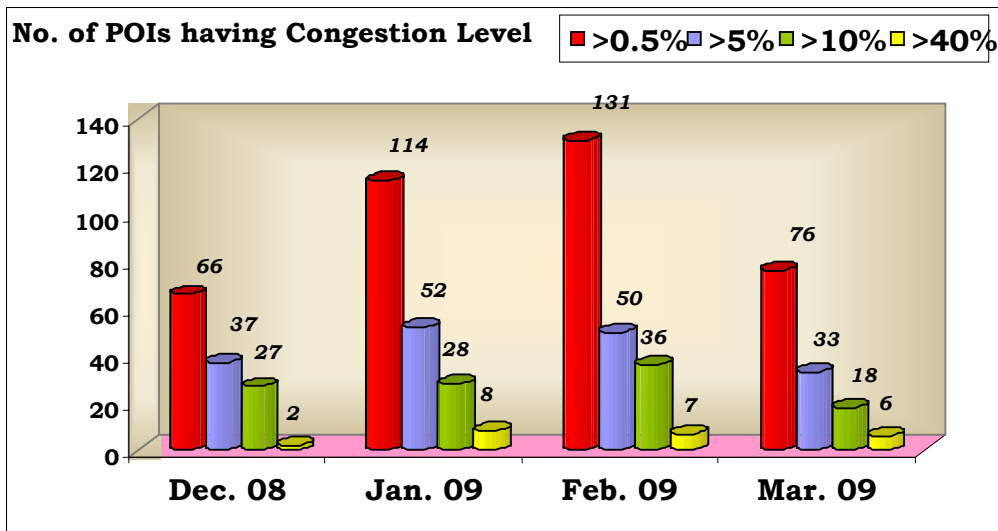
The growth of mobile network is taking place at a very rapid pace and about 10 million subscribers are added every month. In order to ensure seamless interconnection, TRAI has been monitoring the level of congestion at the Point of Interconnection (POI) between various service providers on a monthly basis. This parameter signifies the ease with which a customer of one network is able to communicate with a customer of another network. This parameter also reflects as to how effective is the interconnection between two networks. The benchmark notified by TRAI in the QoS Regulations for this parameter is <0.5%. This means out of 200 calls between two operators only one call should face congestion problem. The result of the monitoring reveals that in a number of areas, the degree of congestion between the operators is alarming. In a number of cities, the level of congestion between the networks of different operators is far more than this benchmark.

Cellular Mobile Service Providers have submitted their POIs Congestion Reports in TRAI for the months of January, February and March 2009.

- We have included only the Service Providers who do not meet the TRAI stipulated POI Congestion benchmark of <0.5% in any of their service areas.
- The POI Congestion Report analysis for the month of January, February and March 2009 shows that the performance of the CMSPs with respect to the congestion on POIs has deteriorated in the month of March 2009 as compared with the performance in December 2008. During the period Cellular Mobile Telephone Subscriber base has increased from 346.89 million in December 2008 to 391.76 million in March 2009. The number of POIs having congestion has increased from 66 in December, 2008 to 76 in March 2009 .
- Out of these 76 POIs in March 2009, in 33 POIs, the level of congestion is more than 5% as compared to 37 POIs in December 2008.
- The number of such POIs where the level of congestion is more than 10% is 18 in March 2009, whereas it was 27 in the month of December 2008.
- The number of worst affected POIs where congestion level is more than 40% is 6 in the month of March 2009 whereas it was 2 in the month of December 2008.
- In respect of POIs from Private CMSPs to BSNL/MTNL, the number of POIs having congestion has decreased from 35 in December, 2008 to 27 in the month of March 2009.

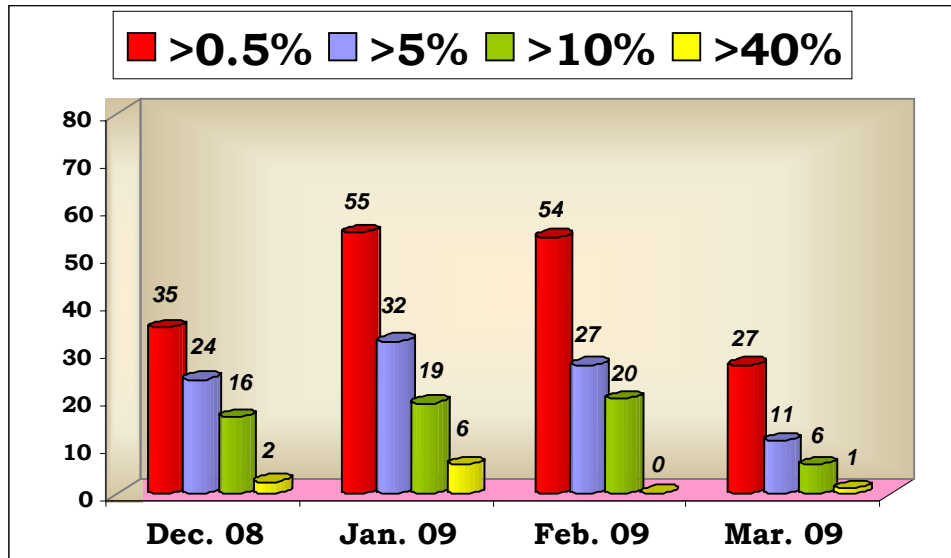
- During the same period, the number of POIs having congestion among the Private CMSPs has increased from 31 in December, 2008 to 49 in March 2009.
- Amongst the private service providers as of March 2009, Reliance Telecom and Idea both have congestion in (18 POIs each) followed by Reliance Communications (16 POIs) and Vodafone (11 POIs).
- The Circles/ States more affected due to POI congestion are Bihar (13 PoIs) followed by Andhra Pradesh and Kolkata (each having 8 no. of congested PoIs), Assam and Himachal Pradesh (each having 7 no. of congested PoIs) and Mumbai (6 PoIs)

The analysis of the degree of congestion in these POIs is given below:-

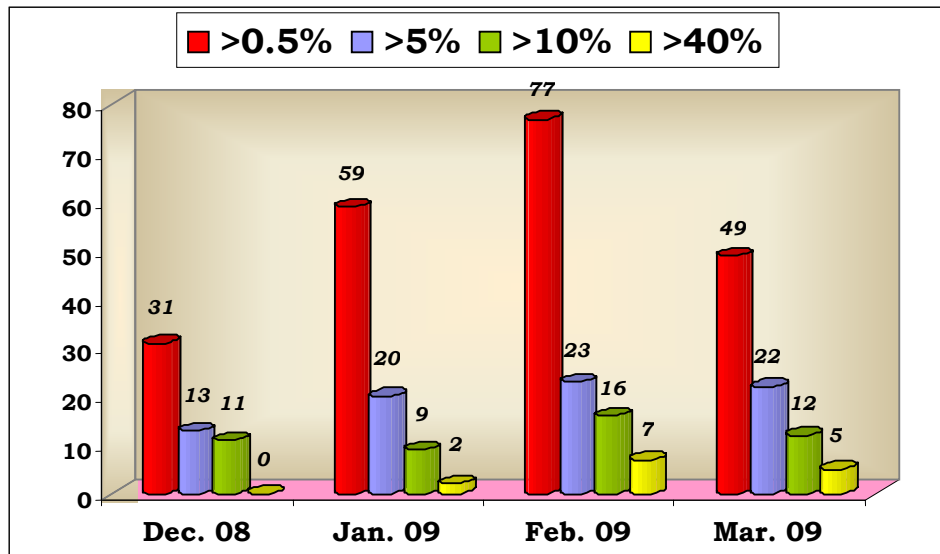


The POI congestion level between Private Service Providers and BSNL, and also among the Private Service Providers is given below in graphs: -

Number of POIs having congestion level between Private Service Providers and BSNL/MTNL



Number of POIs having congestion level among the Private Service Providers



Critical Analysis – Operator wise: -

The worst affected POIs where Congestion level on point of interconnections (POIs) is more than 10%, from Private Service Providers to BSNL and Private Service Providers to Private Service Providers for the month of March 2009 : -

POIs between Private Operators and BSNL					
Bharti Airtel	Tata Teleservices	Reliance Com/ Reliance Telecom	Idea Cellular	Vodafone	Dishnet Wireless
-	-	Reliance Comm. Haryana :- Level -2 Ambala = 13.07% HP :- Level -2 Hamirpur = 14.29% Reliance Telecom HP :- Shimla = 14.78% Kolkata :- Cellone = 66% North East :- Cellone Shilong = 13.14%	-	-	HP :- HSL7C2 = 10.61%

POIs among the Private Operators					
Bharti Airtel	Tata Teleservices	Reliance Com/ Reliance Telecom	Idea Cellular	Vodafone	Dishnet Wireless
-	-	Reliance Comm. AP :- Vodafone Hyd. = 32.04% West Bengal :- RTL Durgapur = 28.50% Haryana :- RTL = 18.03% Reliance Telecom Kolkata :- Airtel Kolkata = 23% Airtel Kolkata = 88% Airtel Kharagpur = 52% Hutch GMSC02 = 52% RIC ILT = 17%	UP-W :- Reliance (UPW 3)= 47.29%	Delhi :- Airtel = 85.90% Gujarat :- Reliance = 21.11% Assam :- Airtel = 19.50%	-

The non-provisioning and insufficient provisioning of telecom circuit resource as per traffic requirements leads to:

- inter-network congestion at the Point of Interconnection (POI)
- loss of calls
- repeated call attempts by consumers
- deterioration in Quality of Service (QoS)
- consumer dissatisfaction.

The network congestion report of all CMSPs for the period January, February and March 2009 is placed at TRAI website – www.traigov.in

Contact Address in case any clarification required:

Advisor (QoS), TRAI
Mahanagar Doorsanchar Bhawan,
Jawahar Lal Nehru Marg (Old Minto Road),
New Delhi - 110002.
Telephone – 011 - 23230404

Authorised for issue

Advisor (QoS)

Comparative POI Congestion level of Cellular Mobile Service Providers

Operators	December, 2008				January, 2009				February, 2009				March, 2009			
	>0.5%	>5%	>10%	>40%	>0.5%	>5.0%	10.0%	>40.0%	>0.5%	>5.0%	10.0%	>40.0%	>0.5%	>5%	>10%	>40%
Bharti Airtel	14	7	4	0	12	6	2	1	11	4	3	0	3	2	0	0
Tata Teleservices	2	2	2	0	2	2	2	0	0	0	0	0	1	1	0	0
RCL	11	5	4	0	31	15	7	1	38	11	6	0	16	7	5	0
RTL	7	4	3	1	7	2	2	1	14	6	4	1	18	13	8	4
Idea	11	5	5	1	16	6	6	4	20	6	5	1	18	3	1	1
Vodafone	12	9	6	0	19	9	4	1	33	16	12	5	11	6	3	1
Dishnet Wireless	8	5	3	0	19	7	4	0	11	7	6	0	6	1	1	0
Aircel Limited	0	0	0	0	6	5	1	0	1	0	0	0	0	0	0	0
Spice	1	0	0	0	2	0	0	0	3	0	0	0	3	0	0	0
Total	66	37	27	2	114	52	28	8	131	50	36	7	76	33	18	6

Analysis - No. of POIs having congestion level License Service Area wise

SL. No.	Circles	December, 2008				January, 2009				February, 2009				March, 2009			
		>0.5%	>5%	>10%	>40%	>0.5%	>5%	>10%	>40%	>0.5%	>5%	>10%	>40%	>0.5%	>5%	>10%	>40%
1	Andhra Pradesh	4	4	4	0	6	5	5	0	6	2	1	0	8	4	1	0
2	Assam	2	0	0	0	8	2	1	1	9	2	1	0	7	4	1	0
3	Bihar	22	16	14	0	22	8	5	1	16	4	3	0	13	3	0	0
4	Chennai	0	0	0	0	2	2	1	0	1	0	0	0	0	0	0	0
5	Delhi	0	0	0	0	0	0	0	0	3	0	0	0	1	1	1	1
6	Gujarat	3	2	0	0	16	6	3	0	12	2	2	1	3	2	1	0
7	Haryana	2	1	1	0	4	3	2	0	5	1	0	0	3	3	2	0
8	Himachal Pradesh	3	2	1	0	2	2	1	1	6	4	3	0	7	3	3	0
9	J & K	0	0	0	0	3	1	1	0	2	2	2	0	0	0	0	0
10	Karnataka	1	0	0	0	6	1	0	0	6	1	1	0	4	0	0	0
11	Kerala	0	0	0	0	1	0	0	0	5	0	0	0	3	1	0	0
12	Kolkata	0	0	0	0	0	0	0	0	6	3	2	1	8	6	6	4
13	Madhya Pradesh	0	0	0	0	0	0	0	0	4	3	1	0	0	0	0	0
14	Maharashtra	4	0	0	0	2	0	0	0	0	0	0	0	2	0	0	0
15	Mumbai	2	0	0	0	3	0	0	0	4	0	0	0	6	0	0	0
16	North East	5	4	2	1	4	1	1	1	3	2	2	0	2	1	1	0
17	Orissa	1	0	0	0	4	3	2	0	4	3	2	0	0	0	0	0
18	Punjab	0	0	0	0	2	1	0	0	4	1	1	0	2	1	0	0
19	Rajasthan	5	3	1	0	3	3	0	0	4	2	0	0	1	0	0	0
20	Tamilnadu	0	0	0	0	7	4	0	0	0	0	0	0	0	0	0	0
21	UP - East	5	0	0	0	4	1	0	0	4	1	0	0	1	0	0	0
22	UP - West	5	5	4	1	11	9	6	4	10	6	6	1	3	2	1	1
23	West Bengal	2	0	0	0	4	0	0	0	17	11	9	4	2	2	1	0
Total		66	37	27	2	114	52	28	8	131	50	36	7	76	33	18	6

POIs Congestion Report of M/s Bharti Airtel Limited for the month of January, February & March 2009

Name of Circle and POIs	Benchmark <0.5%			Remarks
	January ,2009	February,2009	March,2009	
Bihar				
Cellone	5.34%	4.30%	6.30%	Applied for 103 E1's (63+40) on 24.02.09, Allocation awaited from BSNL
POI With BSNL Level 1 TAX				
Patna	1.60%	0.93%	0.00%	
POI with Private Operators				
Dishnet Airtel	1.50%	0.00%	0.00%	
Reliance WLL/WLN	3.74%	3.70%	0.00%	
Reliance Telecom	0.00%	1.42%	0.00%	
TATA Mobile/Fix	0.00%	0.56%	0.00%	
Madhya Pradesh				
POI with Private Operators				
BTSOL ILD Indore	0.00%	8.15%	0.00%	
Idea	0.00%	0.64%	0.00%	
Maharashtra & Goa				
POI with Private Operators				
Reliance Pune	0.62%	0.00%	0.00%	
BPL / Vodafone	0.73%	0.00%	0.00%	
North East				
Cellone-Shillong	2.00%	2.00%	3.00%	Multiple followups done for this case. Everytime BSNL responds that they will provide E1s in the next month. Feasibility awaited sine 4.9.08.
POI with Private Operators				
Airtel	0.00%	33.00%	0.00%	
UP - East				
POI with BSNL Level 1 TAX				
Bahraich	6.25%	0.00%	0.00%	
POI with Private Operators				
Airtel	0.00%	0.00%	5.46%	Airtel had launched the services with 2 E1s only. Later with the growth of traffic they had asked for 2 more E1s through Microwave at Calicut MSC as they didn't have any other Media available. Augmentation of 2 E1s is in progress.
Assam				
POI with BSNL Level 2 TAX				
Silchar	45.00%	0.00%	0.00%	
UP -WEST				
POI with BSNL Level 2 TAX				
Kotdwar	9.00%	11.00%	0.00%	
Almorah	31.00%	26.00%	0.00%	
POI with Private Operators				
Reliance Mobile	6.22%	0.00%	0.00%	

POIs Congestion Report of M/s Tata Teleservices for the months of January, February & March 2009				
Name of Circle and POIs	Benchmark <0.5%			Remarks
	January ,2009	February,2009	March,2009	
Andhra Pradesh				
Cellone Safabad	11.60%	0.00%	0.00%	
POI with Private Operators				
Idea from GMSC	33.10%	0.00%	0.00%	
RIL GSMC	0.00%	0.00%	8.60%	Augmentation proposed

POIs congestion Report of M/s Reliance Communications Ltd. for the month of January, February & March, 2009				
Name of Circle and POIs	Benchmark <0.5%			Action taken report
	January ,2009	February,2009	March,2009	
Madhya Pradesh				
POI with Private Operators				
RTL	0.00%	26.90%	0.00%	
Indore RTL Basic	0.00%	7.05%	0.00%	
Andhra Pradesh				
Cellone	21.30%	8.40%	0.00%	
POI with BSNL Level 1 TAX				
Secundrabad	14.40%	0.00%	0.00%	
POI with Private Operators				
Vodafone Hyd.	0.00%	0.00%	32.04%	Comments not been provided by SP
Bihar				
Cellone, Bihar	14.20%	0.00%	0.00%	
POI with BSNL Level 2 TAX				
Saharsa	0.00%	1.50%	1.56%	Congestion due to poor link quality, will be resolved by 15 Apr 09.
POI with Private Operators				
Bharti	6.80%	0.00%	2.05%	Total 45 E1s augmented in Feb 09. Further E1s would be augmented from RCOM New PoI at Muzafferpur where fiber work has already been completed.
Aircel	0.00%	0.70%	0.00%	
Karnataka				
POI with BSNL Level 2 TAX - Basic POIs				
BSNL Tax	1.20%	1.96%	1.23%	Comments not been provided by SP
Karwar	8.30%	10.50%	0.00%	
Virajpet LEX	2.30%	0.00%	0.00%	
Somwarpet	1.40%	1.34%	2.50%	Comments not been provided by SP
POI with Private Operators				
Bharti	0.00%	1.55%	0.00%	
Rajasthan				
Cellone	9.30%	5.30%	0.00%	
POI with Private Operators				
Bharti	0.00%	2.80%	0.00%	
RTL	0.00%	0.00%	2.23%	Comments not been provided by SP
Tamilnadu				
Cellone	2.30%	0.00%	0.00%	
POI with Private Operators				
BPL	0.80%	0.00%	0.00%	
UP - East				
POI with BSNL Level 2 TAX - Basic POIs				
Lakhimpur Kheri	0.00%	0.90%	0.00%	

Hardoi	0.00%	2.50%	0.00%	
Gonda	0.00%	8.20%	0.00%	
POI with Private Operators				
Bharti	1.50%	3.10%	1.09%	63 E1s demanded form Bharti. Port confirmation awaited from Bharti.
Airtel_Lucknow	0.90%	0.00%	0.00%	
RTL Huewai	0.80%	0.00%	0.00%	
UP - West				
Cellone	7.20%	16.60%	0.00%	
POI with BSNL Level 2 TAX				
Almora	2.00%	1.00%	0.00%	
POI with Private Operators				
Bharti	0.00%	2.20%	0.98%	63 E1s under augmentation. AT completed.
Vodafone	0.00%	0.60%	0.00%	
Idea	1.10%	0.70%	0.00%	
RTL	0.00%	0.00%	8.83%	Comments not been provided by SP
West Bengal				
Cellone WB	0.00%	4.10%	0.00%	
POI with BSNL Level 2 TAX - Basic POIs				
COT IN	1.30%	0.00%	0.00%	
POI with Private Operators				
Bharti	0.00%	0.60%	0.00%	
RTL	0.00%	0.00%	8.14%	
RTL Durgapur	0.00%	0.00%	28.50%	Comments not been provided by SP
Gujarat				
Cellone	5.90%	12.70%	0.00%	
POI with BSNL Level 1 TAX				
Bhadra	1.10%	2.40%	0.00%	
Gulbai tekra	2.30%	3.40%	0.00%	
POI With Private Operators				
Vodafone	1.00%	1.10%	0.00%	
RTL	17.00%	0.00%	0.00%	
Chennai				
POI With Private Operators				
RTL Vijaywada	5.80%	0.00%	0.00%	
Haryana				
Cellone, Haryana	14.00%	4.90%	0.00%	
POI with BSNL Level 2 TAX - Basic POIs				
Ambala	12.40%	0.00%	13.07%	40 E1s under augmentation. AT completed for 30 E1s. Rest 10 E1s AT by 03 Apr 09.
POI with Private Operators				
Tata	0.00%	1.60%	0.00%	
Bharti				
Idea	0.00%	1.00%	0.00%	
RTL	2.80%	0.00%	18.03%	Comments not been provided by SP
Himachal Pradesh				
Cellone, Himachal Pradesh	7.70%	9.90%	0.00%	
POI with BSNL Level 2 TAX - Basic POIs				
Ambala	0.00%	11.60%	0.00%	
Bilaspur	0.00%	3.76%	0.00%	
Hamirpur	40.20%	25.93%	14.29%	
Solan	0.00%	0.00%	2.44%	Comments not been provided by SP
Mandi	0.00%	0.00%	2.44%	
Kerala				
Cellone	1.70%	0.00%	0.00%	
Delhi				
POI with Private Operators				
Vodafone	0.00%	3.00%	0.00%	
Tata	0.00%	1.60%	0.00%	
Idea	0.00%	0.80%	0.00%	
Punjab				
Cellone	7.70%	4.20%	0.00%	
POI with Private Operators				
Vodafone				
Spice	0.00%	1.80%	0.00%	

POIs Congestion Report of M/s Reliance Telecom Ltd. for the months of January, February & March,2009

Name of Circle and POIs	Benchmark <0.5%			Remarks
	January ,2009	February,2009	March,2009	
Bihar				
POI with BSNL Level 2 TAX				
Saharsa	15.09%	14.43%	9.17%	Augmentation of Poi is approved but as per the instructions of SSA. Poi built up has to be shifted from Microwave building to TAX building BSNL order for the same is awaited.
POI with Private Operators				
Airtel Local with Patna	0.00%	0.00%	2.67%	E1 tested for the new POI with Patna MSC 9, commissioning of new POI will bring the congestion down
Vodafone (with Patna MSC)	0.00%	0.00%	9.67%	Augmentation of 10 E1s has been raised
Himachal Pradesh				
POI with BSNL Level 1 TAX				
Shimla	0.00%	1.28%	14.78%	Overflow traffic of Cellone 40 ports applied on 3rd Feb 09
Assam				
POI with BSNL Level 2 TAX				
Silchar	0.80%	0.80%	0.70%	Advise note received for 5 E1s as on 27.03.2009
POI with Private Operators				
Aircel Guwahati MSC1	2.30%	5.90%	5.50%	1 STM has been applied
Aircel Guwahati MSC2	1.90%	2.00%	7.30%	Overflow is given to Aircel POI with MSC1
Aircel Guwahati MSC3	1.70%	1.70%	6.20%	Overflow is given to Aircel POI with MSC2
Airtel Guwahati	3.50%	3.70%	2.40%	1 STM has been applied
Kolkata				
Cellone Kolkata	0.00%	2.44%	66.00%	Applied to Cellone to provide 5E1s
POI with Private Operators				
Aircel Kolkata	0.00%	0.00%	23.00%	Applied to Aircel Kolkata to provide 3 E1s
Airtel Kolkata	0.00%	8.87%	88.00%	10 E1s augmented. Applied to Airtel to provide 36 E1s
Airtel Kharagpur WB	0.00%	0.00%	52.00%	Applied to Airtel WB to provide 3 E1s
RCOM Kolkata	0.00%	20.49%	0.00%	
Vodafone GMSC	0.00%	49.92%	0.00%	
Vodafone GMSC WB	0.00%	3.40%	3.40%	New POI augmented with RTL MSC3 and Vodafone WB GMSC
Hutch GMSC 02 Kolkata	0.00%	0.00%	52.00%	New POI augmented with 4 E1s. Applied to Vodafone Kolkata to provide 45 E1s
TTSL	0.00%	3.37%	1.66%	Applied to TATA Kolkata to provide 8 E1s 15 E1s augmented
RIC ILT	0.00%	0.00%	17.00%	4 E1s augmented. Another 6 E1s will be augmented
North East				
Cellone Shilong	59.74%	30.16%	13.14%	STM 4 is ready for 20 E1s augmentation, pending from BSNL end

POI Congestion Report of M/s Idea Cellular Ltd. for the month of January, February & March, 2009

Name of Circle and POIs	Benchmark <0.5%			Remarks
	January ,2009	February,2009	March,2009	
Bihar				
Cellone Patna OG	26.30%	18.40%	0.00%	
POI with Private Operators				
Aircel Patna	0.00%	0.70%	0.00%	
Airtel Patna OG	0.00%	0.00%	0.92%	40 E1 Connectivity from Muz. Under Proc
Airtel Ranchi OG	2.10%	3.20%	0.74%	
BTSOL NLD Bothway	2.60%	1.00%	0.87%	Media yet not ready for 5 E1 Connectivity from BTSOL end.
BTSOL ILD Bothway	0.70%	3.10%	3.21%	3 E1 augumentation Pending due media pending from BTSOL
Tata Patna	0.00%	12.10%	0.00%	
RIM Patna Bothway	0.80%	0.00%	0.00%	
RIM NLD Bothway	1.40%	6.00%	0.00%	
RIM NLD	0.00%	0.00%	0.00%	
Idea NLD	3.20%	0.00%	0.00%	
VSNL NLD from Patna Bothway	0.80%	0.00%	0.00%	
VSNL NLD from Ranchi Bothway	1.30%	2.90%	2.80%	15 E1 connectivity under process ,VSNL media Pending
UP - West				
POI with BSNL Level 2 TAX				
Kotdwar	43.43%	19.05%	0.00%	
Aimora	42.54%	35.66%	0.00%	
POI with Private Operators				
Vodafone - UP -E				
RIL-UPW	15.65%	0.00%	0.00%	
RIL-UPW2	42.03%	0.00%	0.00%	
RIL-UPW3	51.88%	53.83%	47.29%	Initiated procees for 25 ports augumentation with Reliance UPW
Andhra Pradesh				
POI with Private Operators				
Airtel 3, MSC04	0.00%	0.00%	0.56%	Overflow defined
Maharashtra				
POI with BSNL Level 2 TAX				
Aurangabad	0.00%	2.44%		
Beed	0.00%	0.00%	7.51%	Accidental congestion observed due to blocking of partial devices -15, 20, 21, 31-Mar-09.
Bhandara	0.00%	0.69%	0.00%	
Gadchiroli	1.52%	3.09%	5.78%	Applied for augmentation by additional 1E1 on 4-Jul 08. Demand note paid leased line. Demand note for port charges paid 19-Feb-09. Instructions for A/T are awaited.
Jalna	0.00%	0.00%	2.55%	Accidental congestion observed due to blocking of partial devices -10-Mar-09.
Parbhani	0.00%	4.74%	1.24%	Accidental congestion observed due to blocking of partial devices -10-Mar-09.
POI with Private Operators				
Reliance NLD MSC1	0.00%	0.00%	0.66%	Accidental congestion obeserved due to blocking of partial devices 11, 18, 22 March, 09
Mumbai				
POI with Private Operators				
Delhi NLD	0.00%	0.00%	0.88%	
Orissa NLD	0.00%	0.00%	0.65%	Overflow defined and last route traffic is below 75%
Pune GMSC	0.00%	0.00%	0.53%	
TTML Technopolis	0.51%	0.00%	0.00%	
Spice Punjab NLD	0.00%	0.00%	0.64%	Overflow defined and last route traffic is below 75%
Kerala				
POI with Private Operators				
Vodafone CMSP MSC1	0.00%	0.87%	0.63%	
Airtel MSC1	0.00%	0.55%	0.68%	Over Flow route is defined
Airtel MSC2	0.00%	0.63%	0.00%	
Reliance ILD MSC1	0.00%	0.91%	0.00%	
Reliance NLD MSC1	0.00%	0.82%	0.00%	

POI Congestion Report of M/s Vodafone Essar Mobile Services Ltd. for the month of January, February & March 2009				
Name of Circle and POIs	Benchmark <0.5%			Remarks
	January ,2009	February,2009	March,2009	
Delhi				
POI with Private Operators				
Aircel	0.00%	0.00%	85.90%	Comments not been provided by SP
Bihar				
Cellone Patna	50.00%	0.00%	0.00%	
Punjab				
Cellone Jalandhar	1.01%	0.00%	0.00%	
POI with Private Operators				
Reliance JAL	0.00%	11.65%	8.29%	POI Augmentation is in progress
Andhra Pradesh				
Cellone	13.00%	13.70%	0.00%	
Gujarat				
POI with Private Operators				
Airtel1 MSS03	0.00%	0.60%	0.00%	
Airtel1 MSS04	0.00%	58.90%	0.00%	
RIM Mobile	0.00%	3.72%	0.00%	
RIM MSCS1	0.00%	0.00%	0.00%	
RIM MSC1 BSO 93 O/G	1.12%	0.52%	0.00%	
RIM MSC2 BSO 93 O/G	1.39%	0.00%	0.00%	
RIM MSC3 BSO 93 O/G	8.32%	3.17%	0.00%	
RIM MSC3 BSO 93 O/G	1.84%	0.00%	0.00%	
RIM MSC4 BSO 93 O/G	8.91%	1.74%	0.00%	
RIM MSC5 BSO 93 O/G	0.87%	0.00%	21.11%	6 new PCM AT done with MSS08 and re-engineering traffic plan
RIM MSC7 BSO 93 O/G	16.12%	3.10%	0.00%	
RIM MSC6	3.27%	0.00%	0.00%	
RIM Mobile MSC8	2.33%	0.00%	0.00%	
RIM MSS03	0.64%	0.00%	3.34%	9 pcm demanded dated 20/12/2008
RIM MSS04	35.72%	0.00%	5.60%	14 PCM added in MSS09 and re-engineering traffic 27/03/2009
RIL FWP	0.00%	1.25%	0.00%	
Rajasthan				
Cellone				
Cellone NLD	8.34%	4.34%	0.00%	
POI with Private Operators				
Reliance ILD	6.23%	5.13%	0.00%	
Haryana				
Cellone	9.00%	6.11%	6.01%	63 E1's augmentation is in process, Tx &
POI with Private Operators				
Reliance	0.00%	0.55%	0.00%	
Maharashtra				
Cellone	0.00%	0.00%	1.01%	Comments not been provided by SP
POI with Private Operators				
RIL NLD	0.00%	0.00%	0.66%	Accidental congestion observed due to blocking of partial devices -11,18 and 22 Mar-09.
Assam				
POI with Private Operators				
Aircel MSC1	0.00%	0.00%	19.50%	Port not available at Aircel MSC
West Bengal				
Cellone	0.00%	34.00%	0.00%	
Cellone Kolkata	0.00%	8.00%	0.00%	
POI with BSNL Level 2 TAX				
Salkia	0.00%	24.00%	0.00%	
POI with Private Operators				
Airtel Asansol	0.00%	28.00%	0.00%	
Airtel Behrampur	0.00%	59.60%	0.00%	
RIM Kolkata	0.00%	36.00%	0.00%	
Vodafone NGN	0.00%	1.40%	0.00%	
RIL Durgapur	0.00%	46.00%	0.00%	
Airtel WB ICAWA3	0.00%	0.70%	0.00%	
Airtel WB ICAWJ1	0.00%	0.90%	0.00%	
RIM NLD Kolkata	0.00%	73.00%	0.00%	
RTL Kolkata	0.00%	56.00%	0.00%	
RIM Kolkata	0.00%	33.00%	0.00%	
Airtel WB	0.00%	1.00%	0.00%	
RIM Kolkata	0.00%	8.00%	0.00%	
Mumbai				
POI with Private Operators				
RIL NLD	4.01%	3.26%	3.30%	Comments not been provided by SP
RIL WLL	0.00%	2.68%	0.00%	
RIL CDMA Mah	1.79%	1.95%	0.00%	
RIL Local Mah	0.00%	2.30%	0.83%	Comments not been provided by SP

POI Congestion Report of M/s Dishnet Wireless Ltd. for the month of January, February & March 2009

Name of Circle and POIs	Benchmark <0.5%			Remarks
	January ,2009	February,2009	March,2009	
Assam				
POI with Private Operators				
Airtel Local ,Jorhat	0.00%	0.86%	2.37%	Comments not been provided by SP
RTL Local	0.00%	3.57%	0.00%	
TTSL Local	0.00%	10.77%	0.00%	
Vodafone	0.00%	0.80%	0.00%	
RCOM NLD	5.22%	0.00%	0.00%	
Aircel NLD, Kolkata	2.46%	0.00%	0.00%	
North East				
POI with BSNL Level 1 TAX				
Shillong NLD	2.92%	0.00%	0.00%	
POI with Private Operators				
RCOM NLD, Shillong	1.25%	0.00%	0.00%	
West Bengal				
POI with BSNL Level 1 TAX				
WDN7NK NLD	2.60%	0.00%	0.00%	
POI with Private Operators				
Airtel, WB	1.27%	0.00%	0.00%	
VSNL NLD	2.60%	0.00%	0.00%	
Orissa				
POI with BSNL Level 1 TAX				
Bhubaneshwar MSC1 Local	4.35%	1.75%	0.00%	
OSL7BT Local	5.84%	8.99%	0.00%	
OBL7BT	28.38%	15.50%	0.00%	
OBL7AL	10.09%	12.11%	0.00%	
J & K				
POI with BSNL Level 1 TAX				
Jammu NLD	2.50%	0.00%	0.00%	
JJN7JA NLD	0.77%	0.00%	0.00%	
JJN7KA NLD	20.98%	0.00%	0.00%	
Srinagar MSC1 Local	0.00%	27.59%	0.00%	
Jammu MSC1 Local	0.00%	19.53%	0.00%	
Bihar				
POI with BSNL Level 2 TAX				
Gaya	3.40%	0.00%	0.00%	
Katihar	5.23%	0.00%	0.00%	
Motihari	4.52%	0.00%	0.00%	
Phulbani	0.00%	0.00%	4.45%	Phulbani L2 isolated due to BSNL media outage.
POI with Private Operators				
Airtel Patna MSC-1 Local	1.28%	0.00%	0.00%	
BTSOL NLD			0.63%	BTSOL media outage
Idea	37.49%	0.00%	0.00%	
Himachal Pradesh				
Cellone Shimla	0.00%	11.00%	1.17%	2 more E1s augmented with Cellone POI, but still there is some issue with the cellone & we are coordinating with them to resolve the issue.
POI with BSNL Level 2 TAX				
HSL7CO	0.00%	0.00%	3.81%	Comments not been provided by SP
HSL7C2	0.00%	0.00%	10.61%	

POI Congestion Report of M/s Spice for the month of January, February & March,2009				
Name of Circle and POIs	Benchmark <0.5%			Remarks
	January ,2009	February,2009	March,2009	
Karnataka				
<i>POI with BSNL Level 1 TAX</i>				
Karwar	1.60%	1.80%	1.40%	A/T completed. Commissioning pending
WMS TX Bangalore	4.60%	3.80%	4.80%	Cellone connectivity pending at BSNL
Punjab				
Cellone	0.00%	0.60%	0.68%	Augmentation of 126 E1s in process

POI Congestion Report of M/s Aircel Ltd. for the month of January, February & March, 2009				
Name of Circle and POIs	Benchmark <0.5%			Remarks
	January, 2009	February, 2009	March, 2009	
Chennai				
<i>POI with Pri vate Operators</i>				
Vodafone	19.00%	1.00%	0.00%	
Tamilnadu				
<i>POI with Pri vate Operators</i>				
Airtel Coimbatore	8.14%	0.00%	0.00%	
Airtel Salem	9.25%	0.00%	0.00%	
Airtel Madurai	8.86%	0.00%	0.00%	
Airtel Trichy	2.50%	0.00%	0.00%	
Vodafone Coimbatore	6.22%	0.00%	0.00%	