



## Operator Assisted Drive Test Report

# Sri Ganganagar City

25<sup>th</sup> to 26<sup>th</sup> Sep'2024

By

TRAI Regional office Jaipur

**Key Performance Indicators:** All TSPs have met the Drop Call Rate (DCR) benchmark of 2% . All TSPs have met the Call Setup Success Rate (CSSR) of 95%.

The Operator Assisted Drive Test has been carried out by Regional Office, Jaipur with the help of Service Providers in Sri Ganganagar City and Hotspot from 09:00 AM to 8:00 PM on 25<sup>th</sup> to 26<sup>th</sup> Sep'2024. The drive test covered drive route of 75 KMs & 5 no hotspots over a period of 2 days. Approximately 160 calls were made for each of the networks: three 2G networks, one 3G networks and three LTE networks covering four TSPs.

Overview

Voice Summary

Data Summary

# Overview

Regional Office, TRAI Jaipur conducted Operator Assisted Drive Test on 25<sup>th</sup> to 26<sup>th</sup> Sep'2024 covering Sri Ganganagr city. The performance of Airtel, BSNL, Vodafone Idea and Jio was monitored across various technologies (2G, 3G and 4G). The test results obtained from these drive tests were utilized to assess the network quality for Voice and Data services.

**Voice:** Coverage, Quality, Handover Success Rate, Call Setup Success Rate, Drop Call Rate and Block Call Rate.

**Data:** Download Throughputs,

## Drive Test Details :

**Voice Tests:** Calls were made for 90 sec duration with a wait time of 10 sec between calls in all technologies. The drive test covered a drive route of approximately 75 KMs. Approximately 161 calls were made for each of the Jio networks: three 2G (Lock Mode) networks, one 3G (Dual mode) networks and three VoLTE networks covering 4 unique TSPs.

## Data Tests:

**Dynamic data test** was conducted for 75 kms for download throughput in all technologies.  
2G – measurement – UE Locked in 2G file size- 500KB

3G – measurement – UE in 3G File Size- 20MB

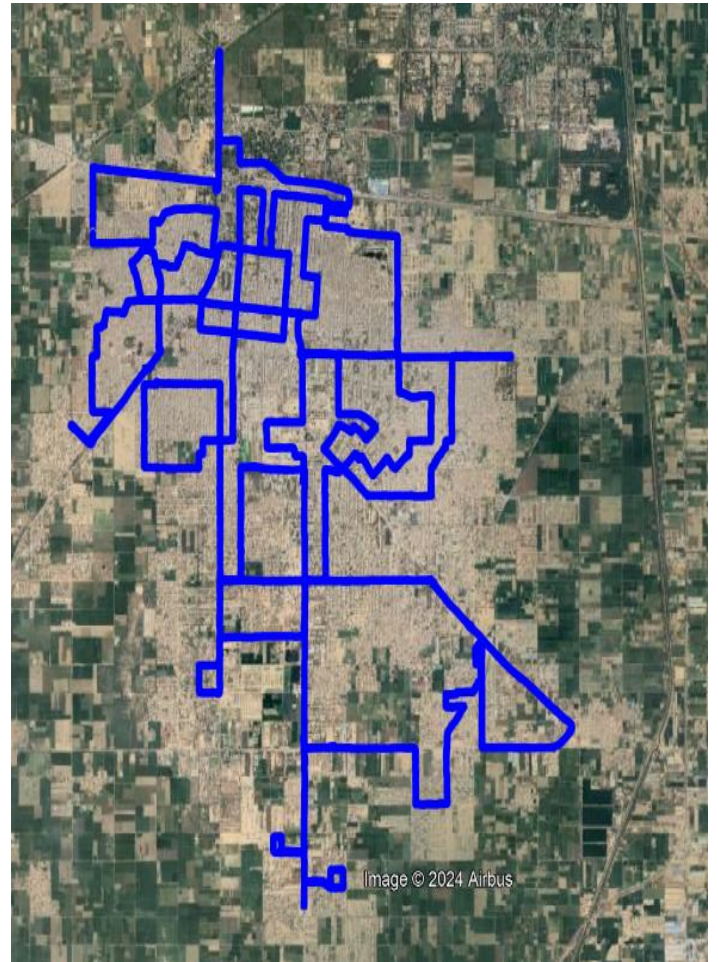
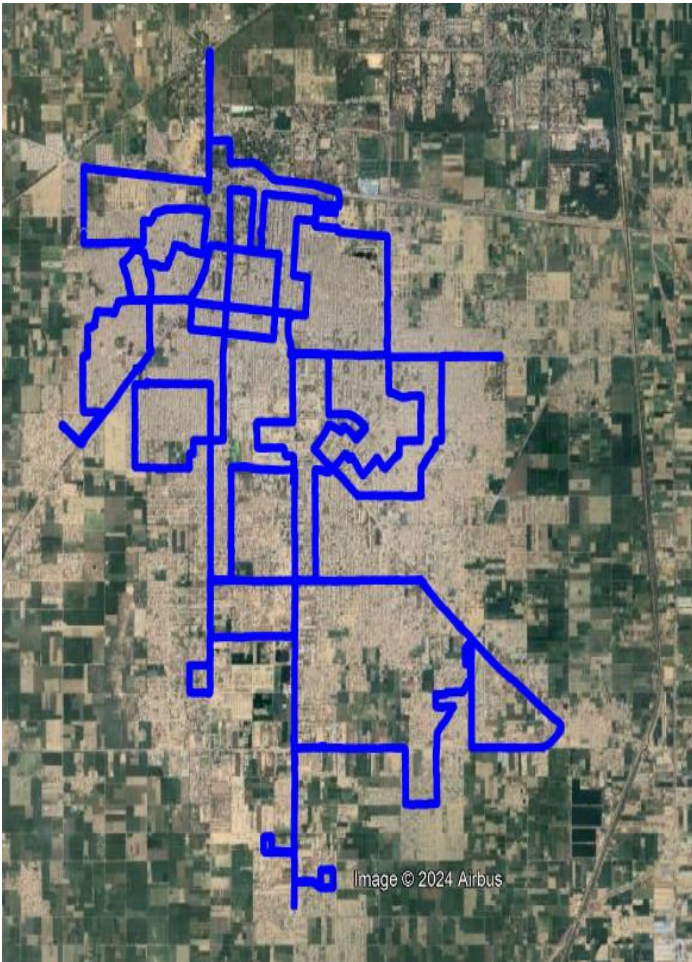
4G – measurement – UE in LTE File Size- 40MB

## Static data tests on 5 hotspots

1. Sukhadiya Circle
2. Circuit House
3. Sri Ganganagar Junction
4. Central Bus Stand, Sri Ganganagar
5. Ridhi Sidhi Mall

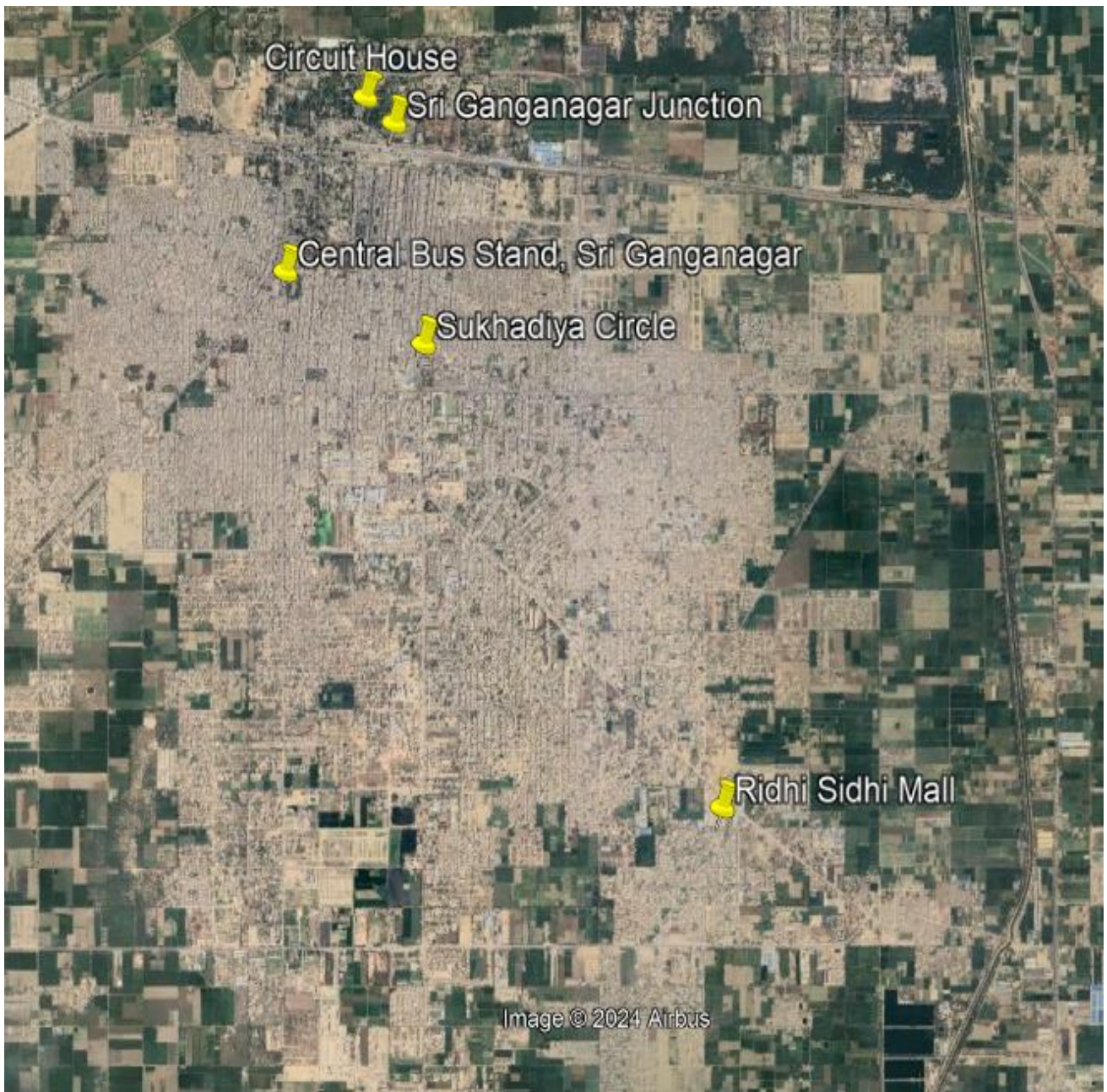
Service	Specifications
Download	2G (Locked) - 500KB, 3G (Dual) - 20 MB, 4G (Free) - 40 MB
Upload	2G (Locked) - 100KB, 3G (Dual) - 5 MB, 4G (Free) - 10 MB
Web Browsing	3 links of e/m commerce website www.amazon.in, www.flipkart.com and PayTm
Latency	32 Bytes on www.google.com

## Voice & Dynamic Data Test Drive Route



Date	Test Scenario	Area to be Covered
25-Sep-24	2G/3G/4G Voice and 3G/4G Dynamic Data	Starting point:K.L.M Hotel & Resorts,Ridhi Sidhi - 2,Ridhi Sidhi - 1, SN Hospital,SH-62, Vardh Ashram Road,Tiny Tots Senior Sec School,Sadbhavna Nagar,Suratgarh Marg,Govt.Medical College & Hospital,UIT Rd, Jawahar Nagar,Meera Marg,City Hospital Rd,SSB Rd,Chahal Chowk,Tehsil Rd,Gagan Path, Sukharia Nagar,Tantia General Hospital,Jindal Heart & Superspeciality Hospital,Maharishi Goutam Marg,Mausam Vibhag,Ganganagar Bada Bajar,Karni Marg,Arya School,Govt Law College,SGN Khalsa PG College,Hindmalkot Rd, Teen Puli,Railway Station Road, Tara Chand Vatika, Purani Abadi,Sukhwant theatre Rd,Koda Chowk,Purani Abadi SABzi mandi,Mohar Singh Chowk,Jhanki Wale Balaji Temple,Chugh Anorectal & General Hospital,Padampur Marg, Kunj Vihar, Shyam Nagar,Setia COLony, Bhambhu Colony, Gol Bazar,Radeshyam Rd,Acharya Tulsi Marg, L Block,G Block, H Block,Vinoba Basti, Ravindra path, Dhan Mandi, Sukhadiya Circle.
26-Sep-24	Hot Spots- 2G/3G/4G Static Data Tests	Static Hotspot – 1) Sukhadiya Circle, 2) Circuit House, 3) Sri Ganganagar Junction, 4) Central Bus Stand, Sri Ganganagar, 5) Ridhi Sidhi Mall.

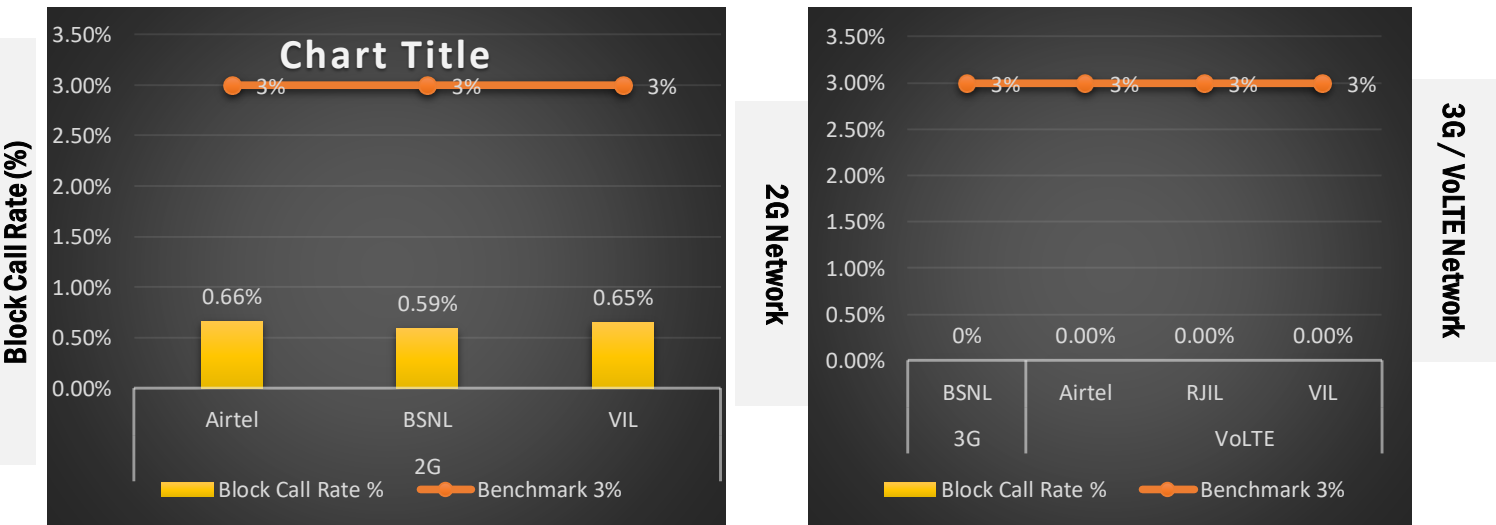
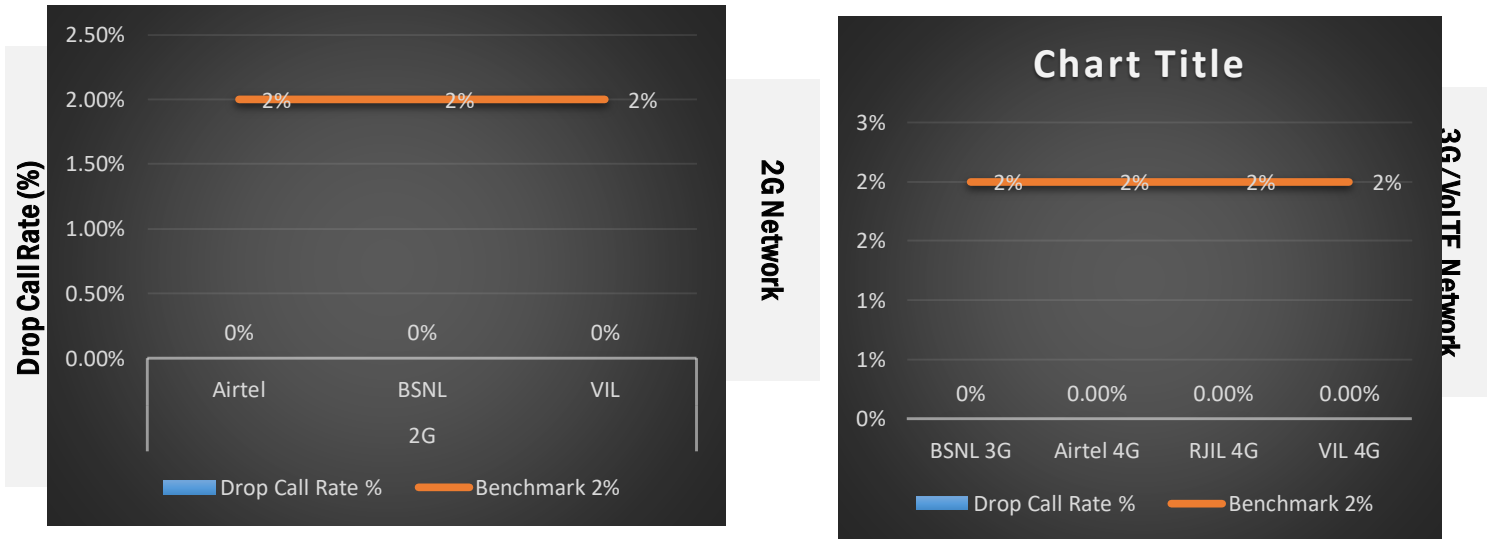
## Data Service Test - Static Locations



### Hotspot Locations

1. Sukhadiya Circle
2. Circuit House
3. Sri Ganganagar Junction
4. Central Bus Stand, Sri Ganganagar
5. Ridhi Sidhi Mall

### QoS compliance of the TSPs in Sir Ganganagar City & Nearby area for Voice across technologies 2G/3G/4G-VoLTE:



KPIs	2G			3G	4G		
	Airtel	BSNL	VIL	BSNL	Airtel	RJIL	VIL
Drop Call Rate %	0%	0%	0%	0%	0.00%	0.00%	0.00%
Block Call Rate %	0.66%	0.59%	0.65%	0%	0.00%	0.00%	0.00%

- a) All TSPs have met the 2% QOS benchmark of Drop Call Rate (DCR%).
- b) Call Block Rate (CBR%) benchmark of 3% was achieved by all TSP's.

# Voice Calls

## Key Observations

### Coverage

a) Percentage of coverage samples for 2G  $\geq$  -85 dBm.

TSPs	2G		
	Airtel	BSNL	VIL
Coverage %	97.42%	98.55%	85.63%

b) Percentage of coverage samples for 3G  $\geq$  -90 dBm

TSPs	3G
	BSNL
Coverage %	89.73%

c) Percentage of coverage samples for LTE  $\geq$  -110 dBm.

TSPs	VoLTE		
	Airtel	JIO	VIL
Coverage %	98.72%	99.96%	97.06%

d) Percentage of time spent on 3G/4G network

TSPs	3G	VoLTE		
	BSNL	Airtel	JIO	VIL
Time spent on 3G/4G Network %	19.22%	100%	100%	99.99%

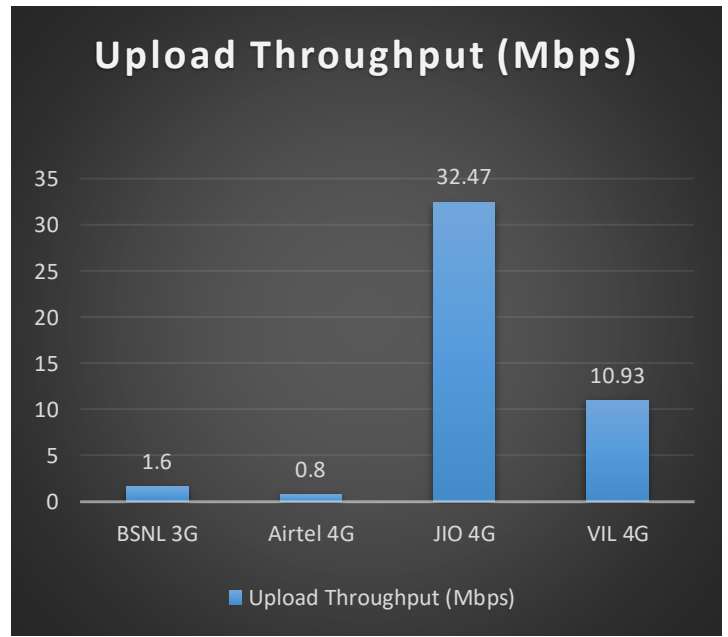
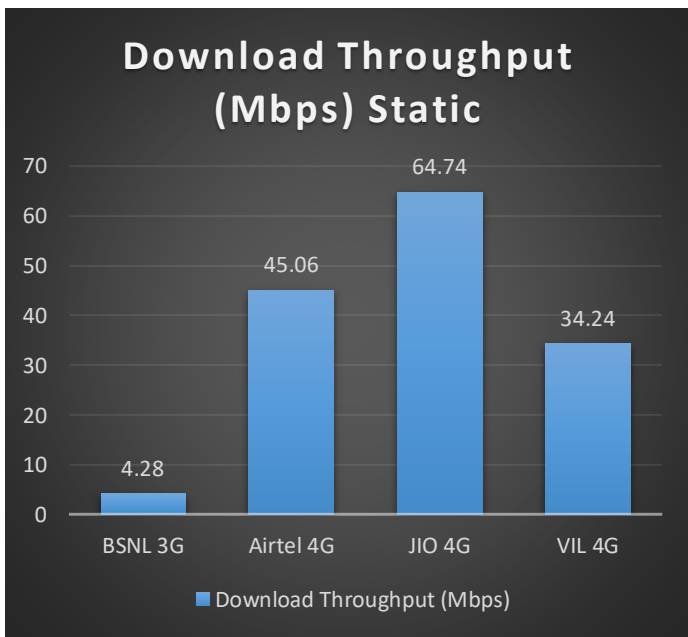
# Data Services Static

## Key Observations

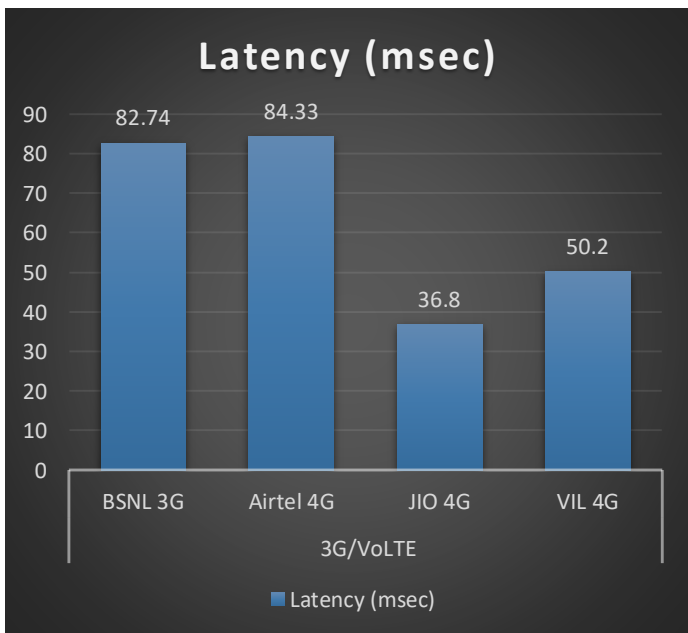
Data was tested at 5 locations .Following services were tested: Data Download/Upload, Latency (www.google.com), and Web browsing (Flipkart, Amazon, Paytm)

### Data Download and Upload Performance Static (Mbps)

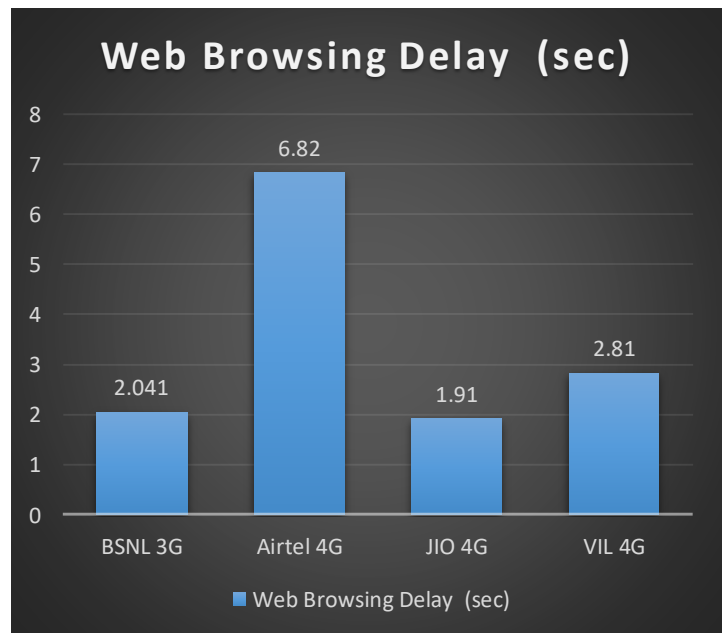
3G/4G/ Network:



### Latency (ms)



### Web Browsing (Sec)



# Data Services Dynamic

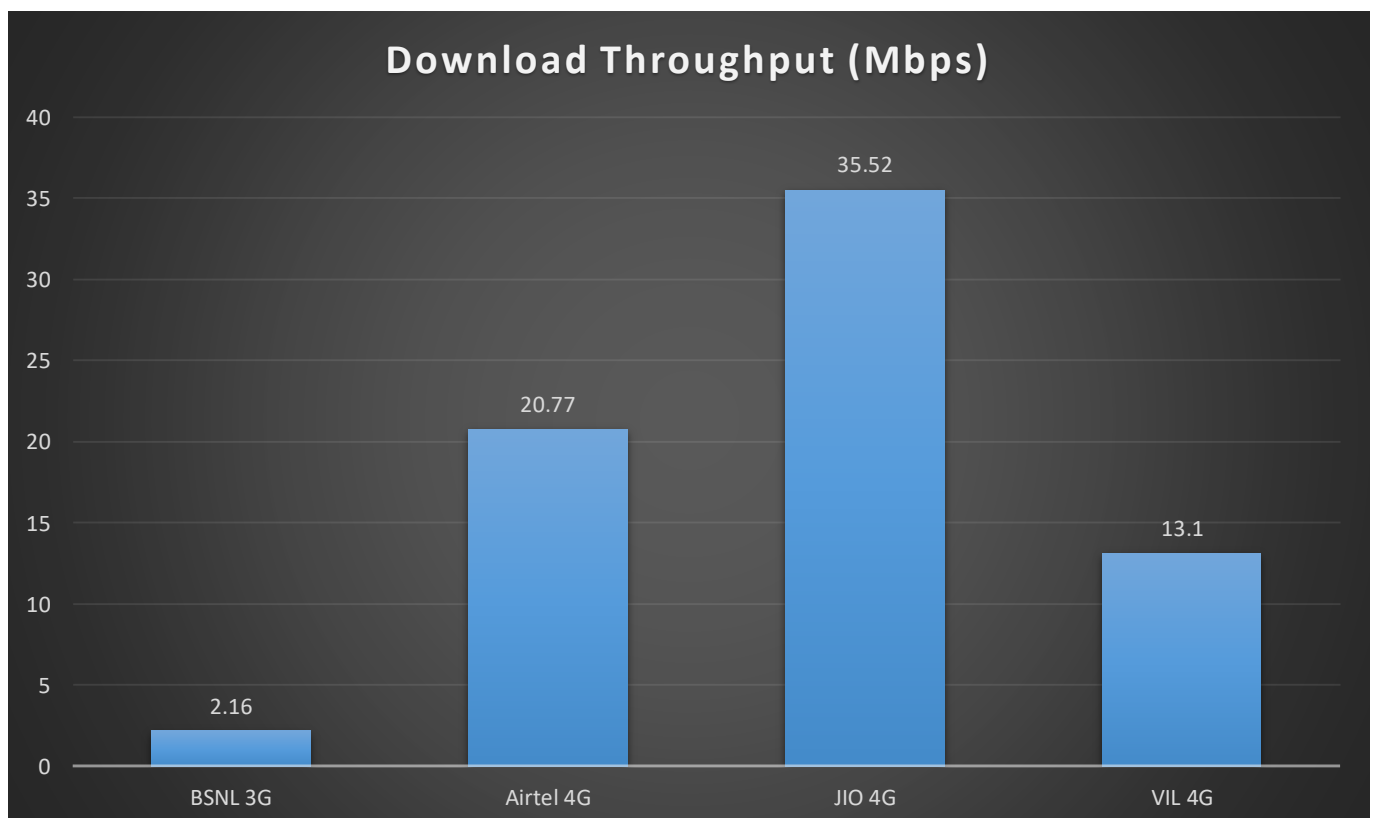
## Key Observations

Dynamic Data was tested for whole voice route. Download Throughput was tested.

### Data Download Performance (kbps) - Dynamic

3G/4G/ Network:

Data Services Dynamic	3G/VoLTE			
	BSNL 3G	Airtel 4G	JIO 4G	VIL 4G
Download Throughput (Mbps)	2.16	20.77	35.52	13.1





# Summary

## City Level Summary- Voice

Voice Call	2G		
	Airtel	BSNL	VIL
Call Attempt	156	169	153
Blocked Call Rate (%)	0%	0.59%	0.65%
CSSR% (Accessibility)	99.34%	99.41%	99.34%
Drop Call Rate (%)	0.66%	0%	0%
Mobility HOSR (%)	99.33%	97.95%	100%
Rx Quality (%)	97.76%	96.2%	98.41%
Average CST Sec	3.48	3.28	3.37

Voice Call	3G/VoLTE			
	BSNL 3G	Airtel VoLTE	JIO VoLTE	VIL VoLTE
Call Attempt	165	157	163	155
Blocked Call Rate (%)	0%	0%	0%	0%
CSSR% (Accessibility)	100%	100%	100%	100%
Drop Call Rate (%)	0%	0%	0%	0%
Mobility HOSR (%)	100%	100%	99.85%	100%
Rx Quality (%)	87.74%	90.3%	91.35%	95.25%
Average CST Sec	3.74	1.93	0.77	0.47

# Summary

## City Level Summary- Data Services

Data Services Static	3G / 4G			
	BSNL 3G	Airtel 4G	JIO 4G	VIL 4G
Download Throughput (Mbps)	4.28	45.06	64.74	34.24
Upload Throughput(Mbps)	1.6	0.8	32.47	10.93
Video Streaming Delay (sec)	2.072	0.12	0.29	1.82
Web Browsing Delay (sec)	2.041	6.82	1.91	2.81
Latency (msec)	82.74	84.33	36.8	50.2

## Data Services static

<u>Sukhadiya Circle</u>	3G	4G		
	BSNL	Airtel	JIO	VIL
Download Throughput (mbps)	5.52	26.38	71.55	31.58
Upload Throughput (mbps)	1.67	1.2	27.55	12.40
Video Streaming Delay (Secs.)	2.038	0.16	0.31	1.79
Web Browsing Delay (sec)	2.062	5.73	1.66	2.05
Latency (msec)	78	102.67	40	65

<u>Circuit House</u>	3G	4G		
	BSNL	Airtel	JIO	VIL
Download Throughput (mbps)	3.61	62.76	83.87	42.03
Upload Throughput (mbps)	1.71	0.77	29.41	8.87
Video Streaming Delay (Secs.)	2.081	0.14	0.28	1.53
Web Browsing Delay (sec)	2.013	7.1	1.76	4.2
Latency (msec)	107.1	71.57	38	46

<u>Railway Station</u>	3G	4G		
	BSNL	Airtel	JIO	VIL
Download Throughput (mbps)	4.52	58.81	60.92	20.89
Upload Throughput (mbps)	1.64	0.81	32.6	16.89
Video Streaming Delay (Secs.)	2.107	0.13	0.3	1.84
Web Browsing Delay (sec)	1.999	6.97	1.93	3.38
Latency (msec)	59.7	105.17	33	45

## Data Services static

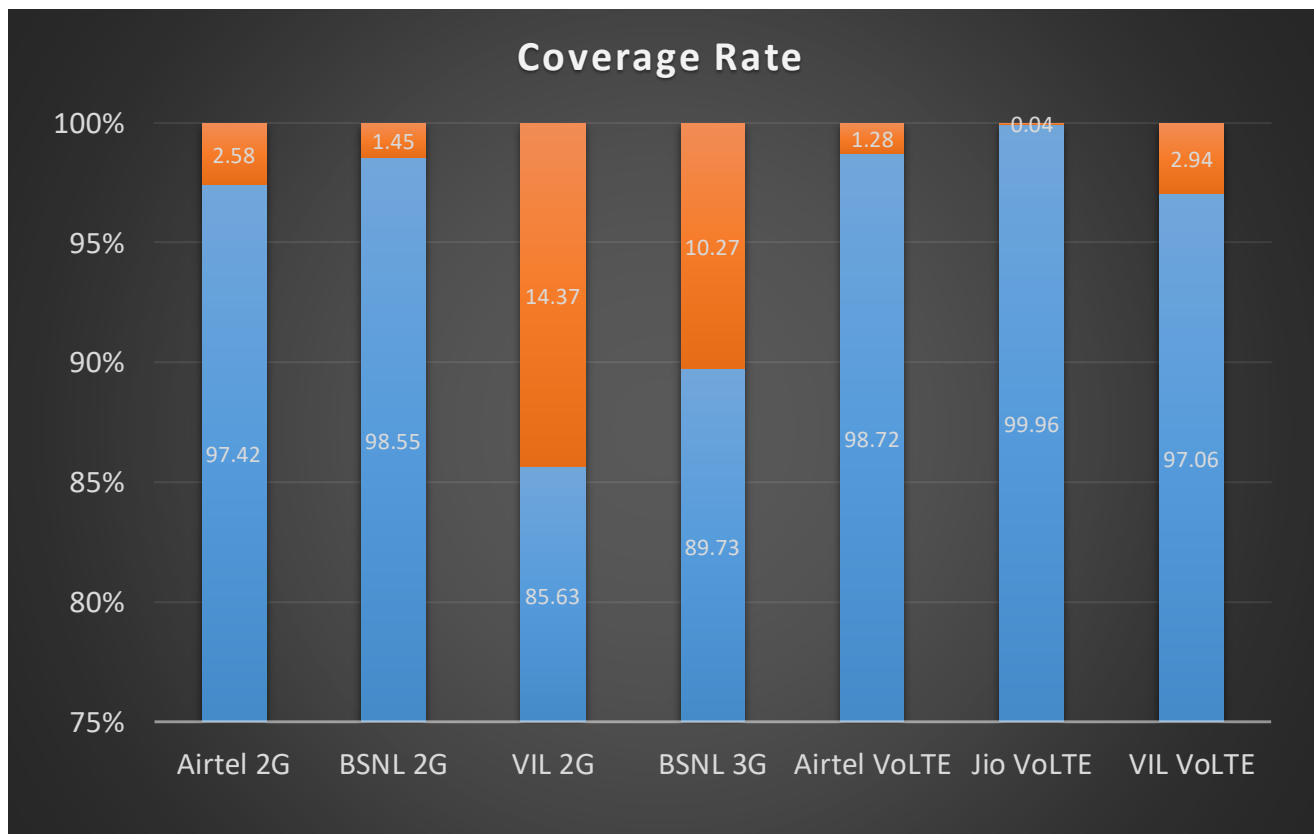
<b><u>Bus Stand</u></b>	<b>3G</b>	<b>4G</b>		
	<b>BSNL</b>	<b>Airtel</b>	<b>JIO</b>	<b>VIL</b>
<b>Download Throughput (mbps)</b>	<b>2.08</b>	<b>38.67</b>	<b>53.72</b>	<b>47.67</b>
<b>Upload Throughput (mbps)</b>	<b>1.42</b>	<b>0.5</b>	<b>23.91</b>	<b>9.62</b>
<b>Video Streaming Delay (Secs.)</b>	<b>2.094</b>	<b>0.17</b>	<b>0.29</b>	<b>1.84</b>
<b>Web Browsing Delay (sec)</b>	<b>2.01</b>	<b>8.64</b>	<b>2.05</b>	<b>2.41</b>
<b>Latency (msec)</b>	<b>81.5</b>	<b>57.93</b>	<b>33</b>	<b>50</b>

<b><u>Riddhi Siddhi Mall</u></b>	<b>3G</b>	<b>4G</b>		
	<b>BSNL</b>	<b>Airtel</b>	<b>JIO</b>	<b>VIL</b>
<b>Download Throughput (mbps)</b>	<b>5.67</b>	<b>38.7</b>	<b>53.62</b>	<b>29.05</b>
<b>Upload Throughput (mbps)</b>	<b>1.59</b>	<b>0.63</b>	<b>48.46</b>	<b>6.87</b>
<b>Video Streaming Delay (Secs.)</b>	<b>2.042</b>	<b>0.15</b>	<b>0.28</b>	<b>2.02</b>
<b>Web Browsing Delay (sec)</b>	<b>2.124</b>	<b>5.67</b>	<b>2.15</b>	<b>2.04</b>
<b>Latency (msec)</b>	<b>87.4</b>	<b>55.12</b>	<b>40</b>	<b>45</b>

## Coverage Details

RF Coverage relates to the geographical footprint within the system that has sufficient RF signal strength to provide for a call session. The Coverage rate is calculated on the basis of % of samples in which the Rx level  $\geq -85$  dBm, RSCP is  $\geq -90$  dBm & RSRP  $\geq -110$ dBm. The details are as follows.

TSP	Coverage Rate %
Airtel 2G	97.42%
BSNL 2G	98.55%
VIL 2G	85.63%
BSNL 3G	89.73%
Airtel VoLTE	98.72%
Jio VoLTE	99.96%
VIL VoLTE	97.06%

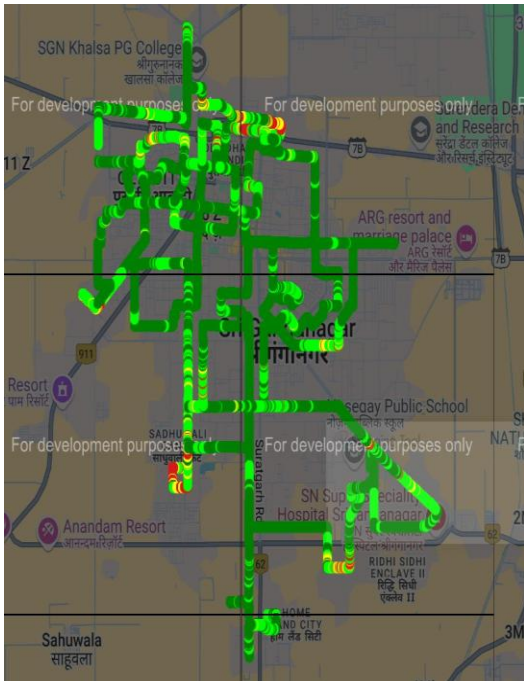


# Coverage Details

## TSP-AIRTEL

Technology	Coverage %
2G	97.42%
VoLTE	98.72%

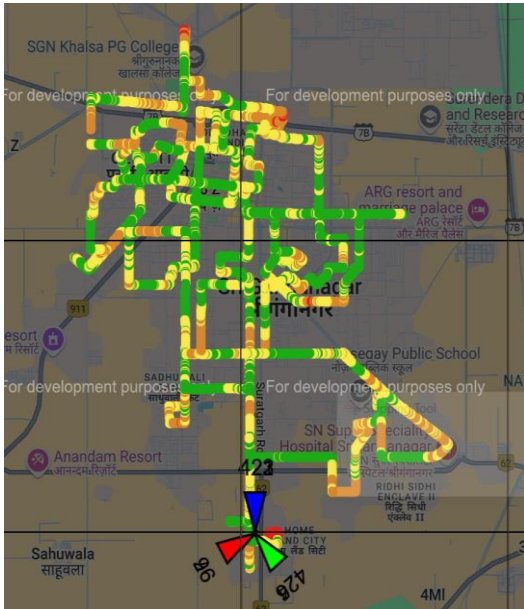
2G



Color	Range	Count	Per
Red	[Min to -95]	(204)	(2.59%)
Yellow	[-95 to -85]	(205)	(2.6%)
Green	[-85 to -75]	(1940)	(24.59%)
Dark Green	[-75, Max]	(5539)	(70.22%)

2G			
Overall RxLevel	# Samples	% PDF	Legends
[Max, >=-75]	5539	70.23%	Green
[-75, >=-85)	1940	24.60%	Yellow
[-85, >=-95)	205	2.59%	Orange
[-95, >=Min)	204	2.58%	Red
<b>Total</b>	<b>7888</b>	<b>100%</b>	

VoLTE



Color	Range	Count	Per
Red	[Min, -140]	(102)	(1.28%)
Orange	[-110, -90]	(1413)	(17.7%)
Yellow	[-90, -80]	(2884)	(36.13%)
Green	[-80, Max]	(3584)	(44.9%)

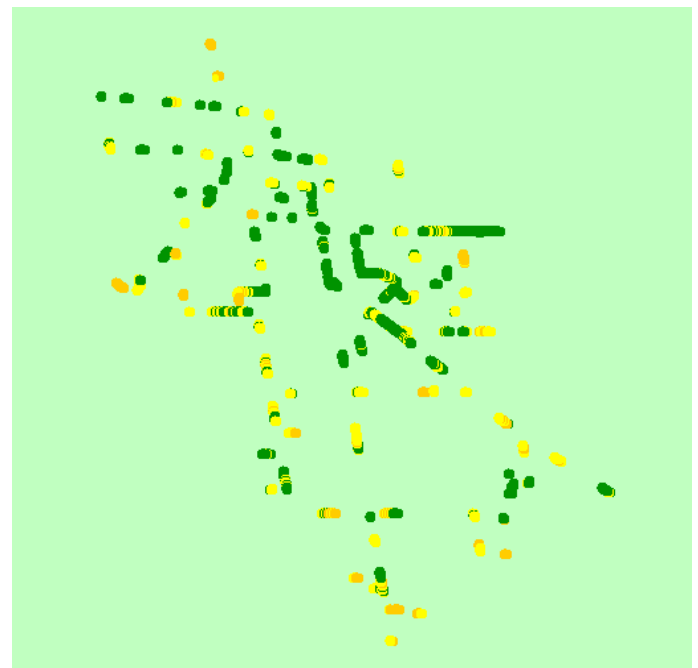
VoLTE /5G			
Overall RSRP	# Samples	% PDF	Legends
[Max, >=-80]	3584	44.89%	Green
[-80, >=-90)	2884	36.13%	Yellow
[-90, >=-110)	1413	17.70%	Orange
[-110, >=Min)	102	1.28%	Red
<b>Total</b>	<b>7983</b>	<b>100%</b>	

## TSP- BSNL

Technology	Coverage %
2G	98.55%
3G	89.73%

2G

3G

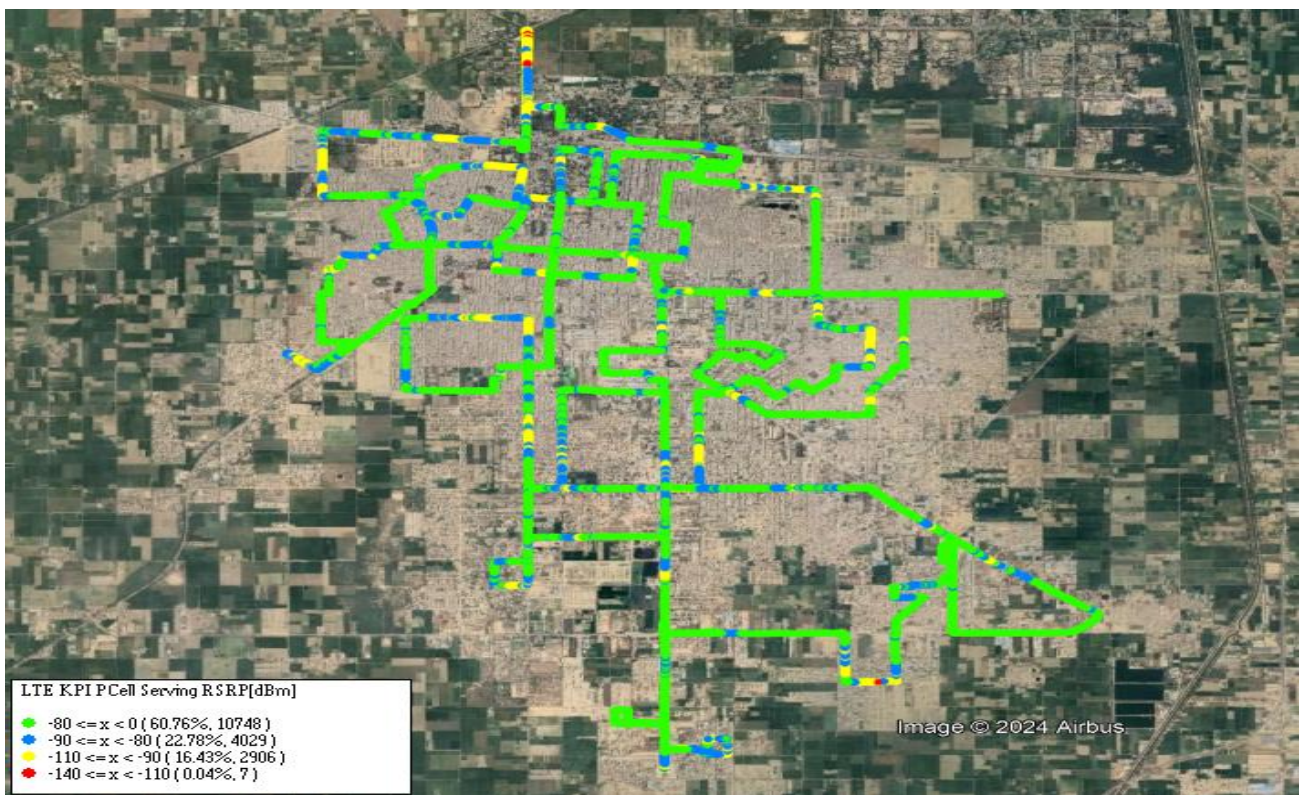


2G			
Overall RxLevel	# Samples	% PDF	Legends
[Max, >=-75]	14098	83.20%	
[-75, >=-85)	2601	15.35%	
[-85, >=-95)	239	1.41%	
[-95, >=Min)	7	0.04%	
<b>Total</b>	<b>16945</b>	<b>100</b>	

3G			
Overall RSCP	# Samples	% PDF	Legends
[Max, >=-80]	2356	66.51%	
[-80, >=-90)	822	23.22%	
[-90, >=-110)	361	10.19%	
[-110, >=Min)	3	0.08%	
<b>Total</b>	<b>3542</b>	<b>100%</b>	

## JIO

Technology	Coverage %
VoLTE	99.96%

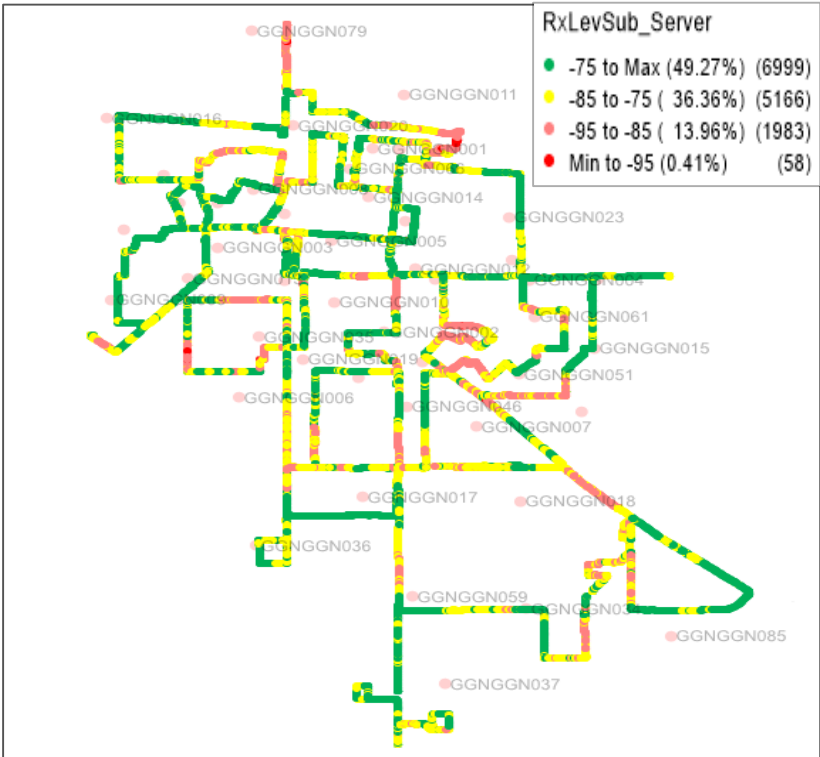


VoLTE			
Overall RSRP	# Samples	% PDF	Legends
[Max, >=-80]	10748	60.76%	<span style="background-color: green; width: 20px; height: 10px; display: inline-block;"></span>
[-80, >=-90)	4029	22.77%	<span style="background-color: yellow; width: 20px; height: 10px; display: inline-block;"></span>
[-90, >=-110)	2906	16.43%	<span style="background-color: orange; width: 20px; height: 10px; display: inline-block;"></span>
[-110, >=Min)	7	0.04%	<span style="background-color: red; width: 20px; height: 10px; display: inline-block;"></span>
<b>Total</b>	<b>17690</b>	<b>100%</b>	



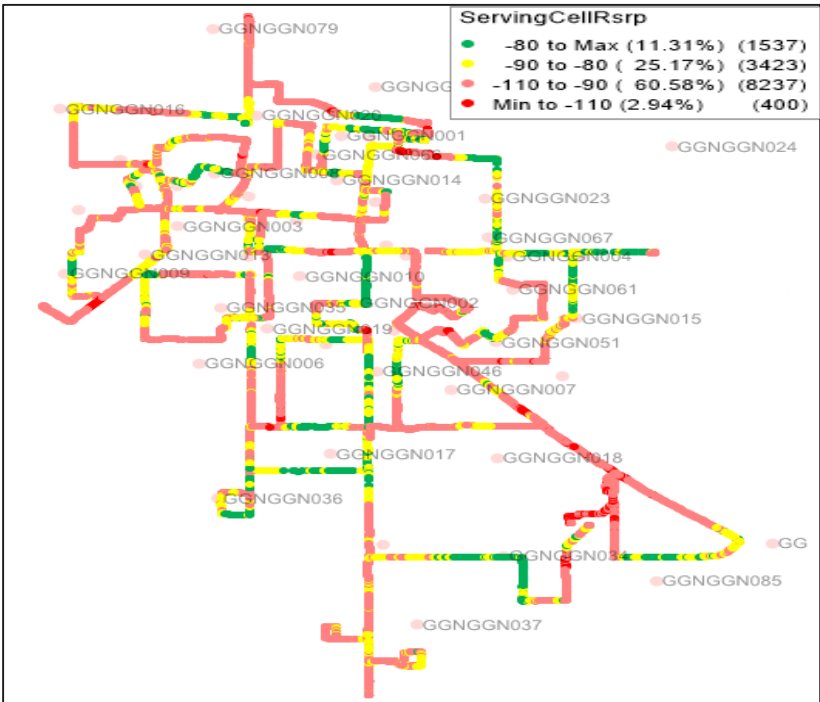
## VIL

	<b>Technology</b>	<b>Coverage Rate %</b>
	2G	85.63%
<b>2G</b>	VoLTE	97.06%



2G			
Overall RxLevel	# Samples	% PDF	Legends
[Max, >=-75]	6999	49.27%	Green
[-75, >=-85)	5166	36.36%	Yellow
[-85, >=-95)	1983	13.96%	Orange
[-95, >=Min)	58	0.41%	Red
<b>Total</b>	<b>14206</b>	<b>100%</b>	

## VoLTE

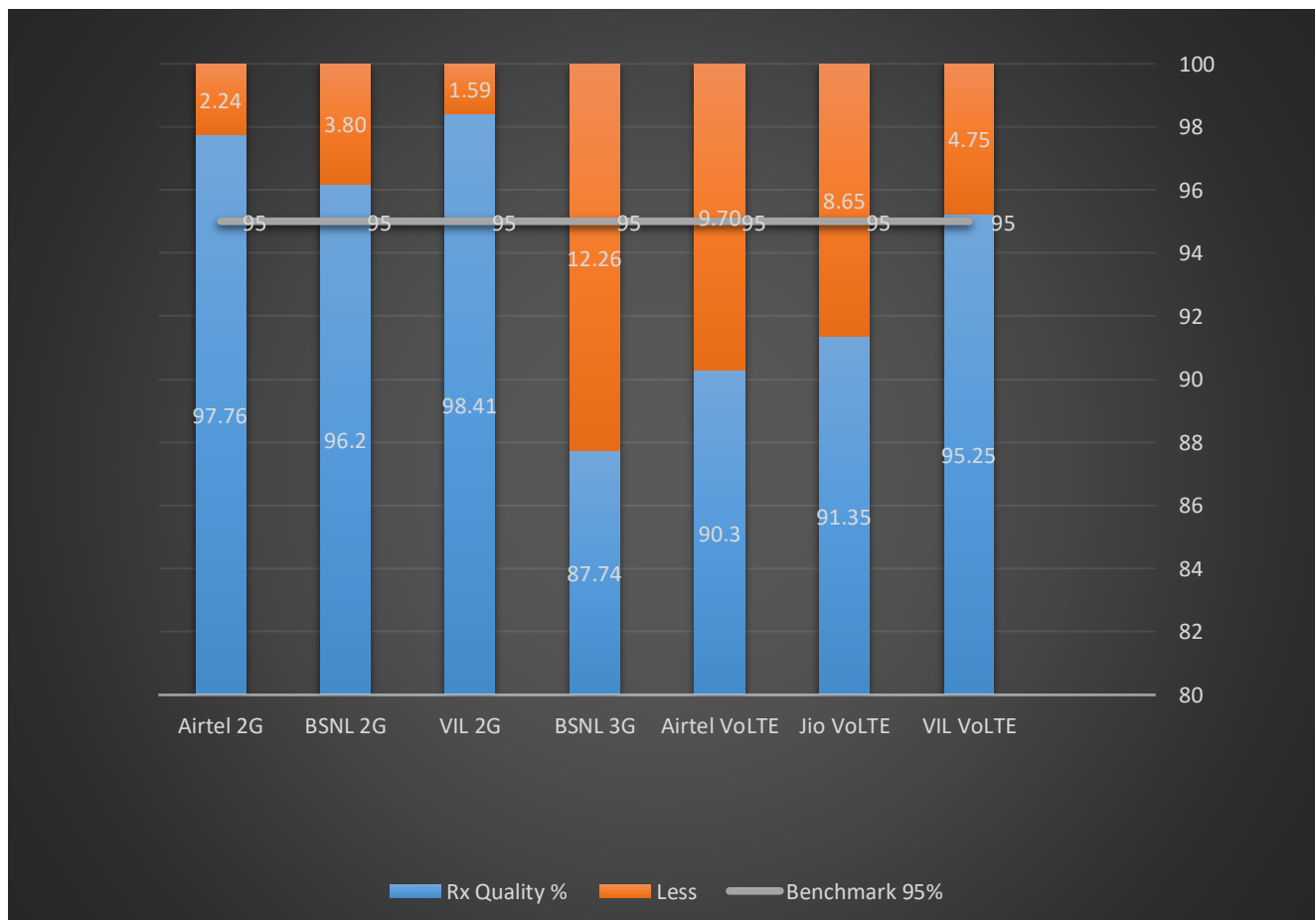


VoLTE /5G			
Overall RSRP	# Samples	% PDF	Legends
[Max, >=-80]	1537	11.31%	Green
[-80, >=-90)	3423	25.17%	Yellow
[-90, >=-110)	8237	60.58%	Orange
[-110, >=Min)	400	2.94%	Red
<b>Total</b>	<b>13597</b>	<b>100%</b>	

## II. Quality Details

For measuring voice quality, as per the QoS norms, RxQual  $\leq 5$  for GSM TSPs, EcNo  $\geq -14$  dBm for 3G TSP sand SINR  $>0$  in case of VoLTE is considered to be good, where as quality beyond this benchmark is considered to be bad. The benchmark should usually be  $\geq 95\%$ .

TSP	Rx Quality %
Airtel 2G	97.76%
BSNL 2G	96.2%
VIL 2G	98.41%
BSNL 3G	87.74%
Airtel VoLTE	90.3%
Jio VoLTE	91.35%
VIL VoLTE	95.25%

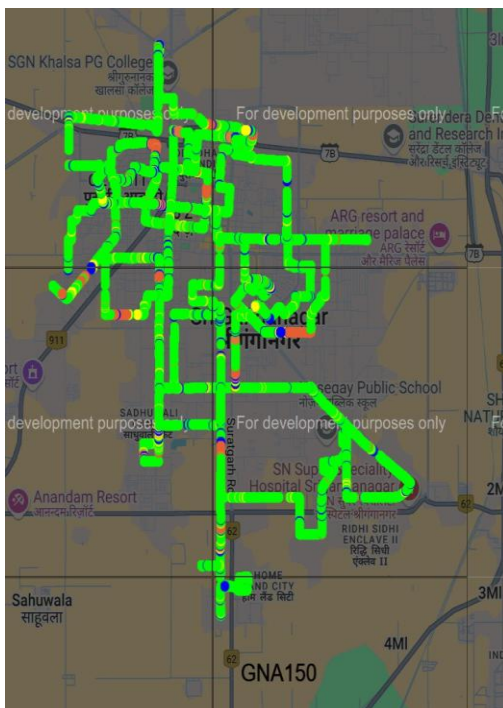


## II. Quality Details

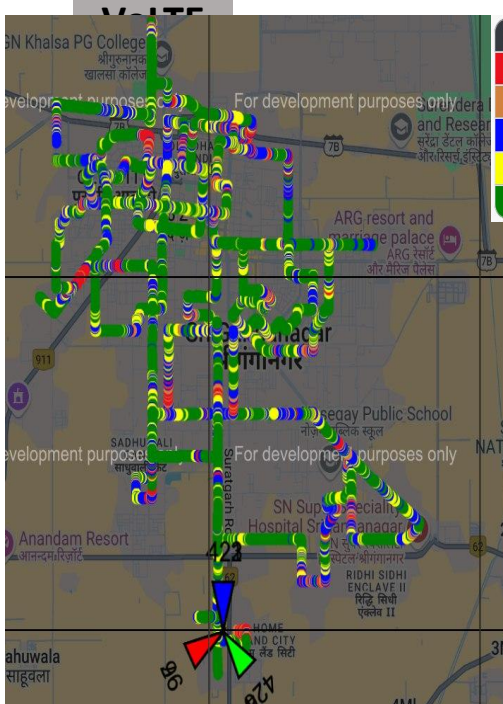
### Airtel

2G

Technology	Rx Quality %
2G	97.76%
VoLTE	91.35%



Overall Rx Quality	# Samples	% PDF	Legends
(Min, <=2)	6097	87.64%	Green
(2, <=3)	283	4.07%	Yellow
(3, <=4)	322	4.63%	Blue
(4, <=5)	95	1.37%	Orange
(5, <=Max)	160	2.29%	Red
<b>Total</b>	<b>6957</b>	<b>100%</b>	

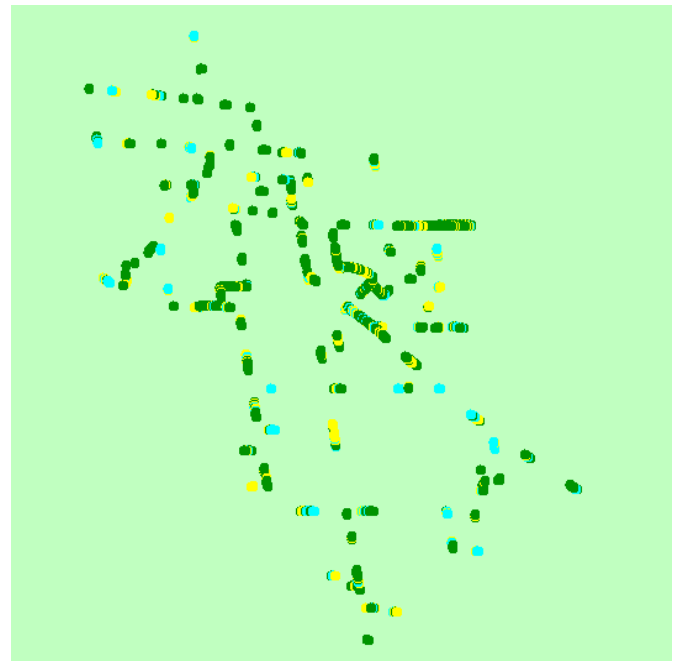


Overall SINR	# Samples	% PDF	Legends
(Min, <=0)	332	4.15%	Red
(0, <=5)	434	5.43%	Orange
(5, <=10)	1605	20.07%	Blue
(10, <=15)	1571	19.65%	Yellow
(15, <=Max)	4054	50.70%	Green
<b>Total</b>	<b>7996</b>	<b>100%</b>	

## II. Quality Details

### BSNL

	Technology	Rx Quality %	
	2G	96.20%	
2G	3G	87.74%	3G



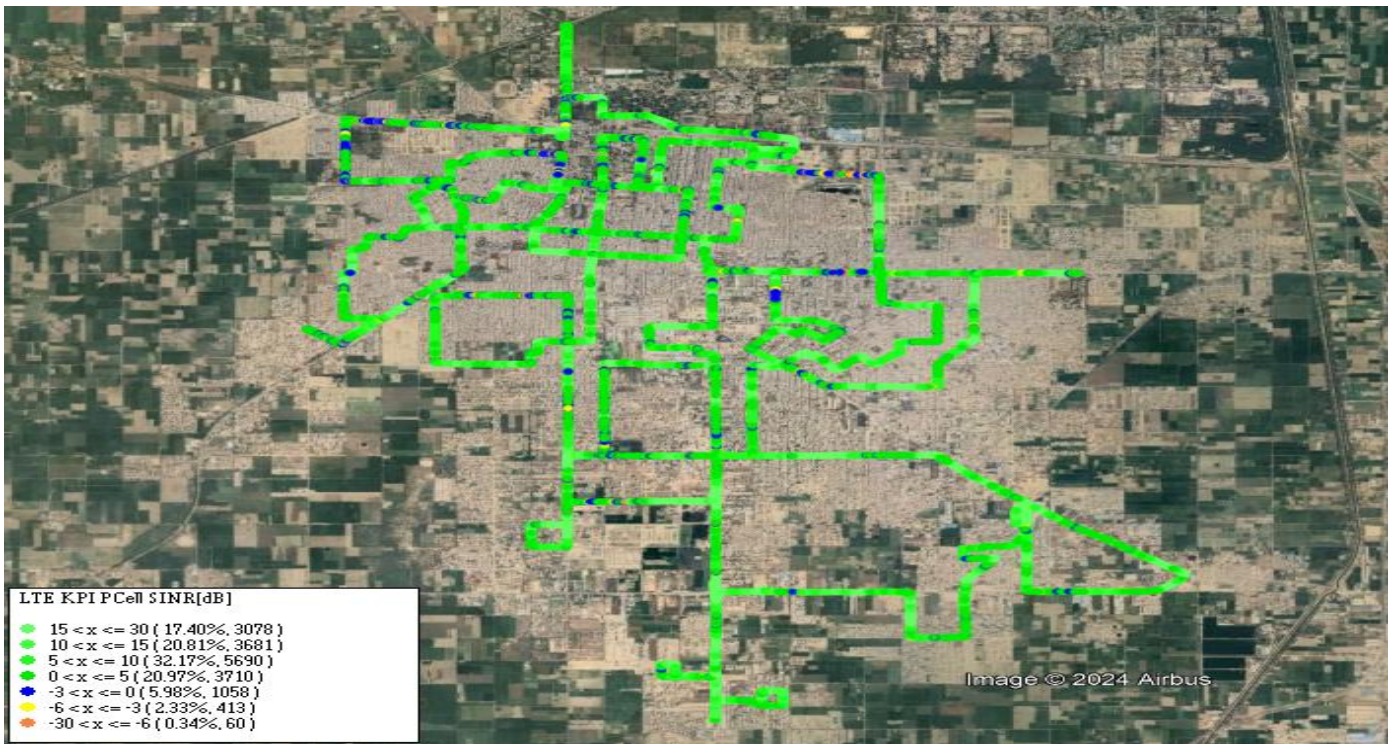
Overall Rx Quality	# Samples	% PDF	Legends
(Min, <=2)	13639	90.72%	
(2, <=3)	296	1.97%	
(3, <=4)	301	2.0%	
(4, <=5)	226	1.51%	
(5, <=Max)	572	3.80%	
<b>Total</b>	<b>15034</b>	<b>100%</b>	

Overall Ec/N0	# Samples	% PDF	Legends
[Max, >=-12]	2396	67.74%	
[-12, >=-14)	707	20.00%	
[-14, >=Min)	434	12.26%	
<b>Total</b>	<b>3537</b>	<b>100%</b>	

For measuring voice quality, as per the QoS norms, RxQual  $\leq 5$  for GSM TSPs, EcNo  $\geq -14$  dBm for 3G TSP and SINR  $> 0$  in case of VoLTE is considered to be good, where as quality beyond this benchmark is considered to be bad. The benchmark should usually be  $\geq 95\%$ .

## JIO

Technology	Rx Quality %
VoLTE	<b>91.35%</b>



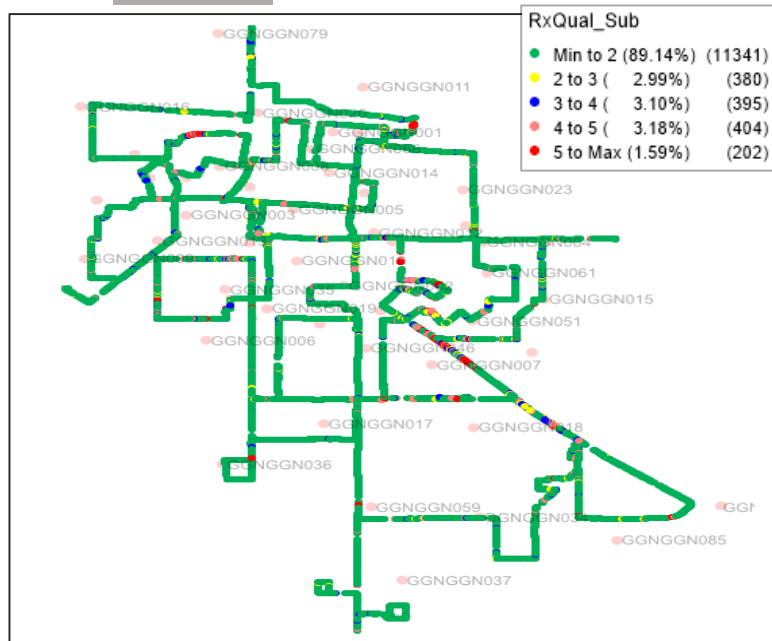
Overall SINR	# Samples	% PDF	Legends
(Min, $\leq -6$ )	60	0.34%	
(-6, $\leq -3$ )	413	2.33%	
(-3, $\leq 0$ )	1058	5.98%	
(0, $\leq 5$ )	3710	20.97%	
(5, $\leq 10$ )	5690	32.17%	
(10, $\leq 15$ )	3681	20.81%	
(15, $\leq \text{Max}$ )	3078	17.40%	
<b>Total</b>	<b>17690</b>	<b>100%</b>	

## II. Quality Details

### VIL

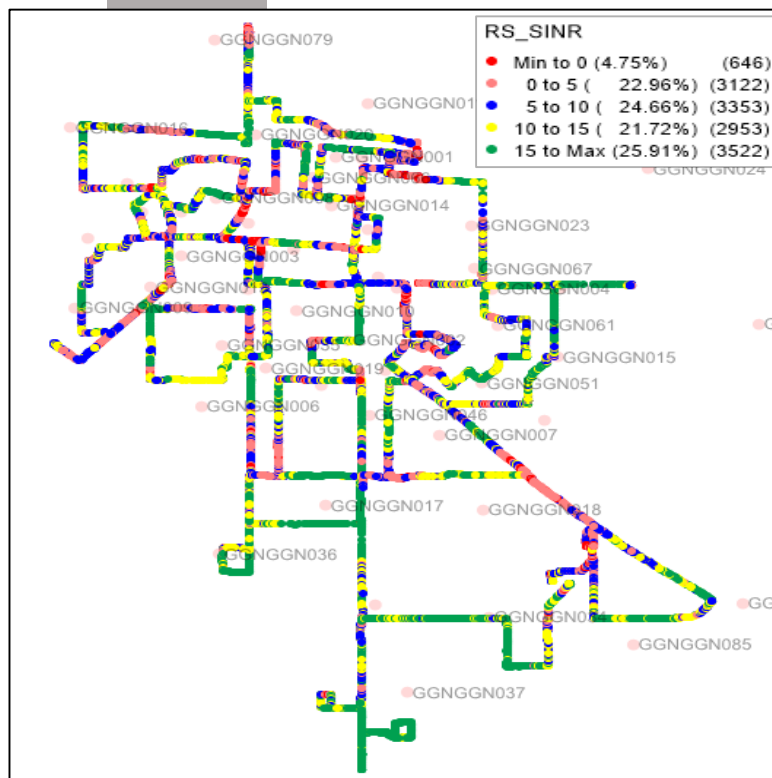
Technology	Rx Quality %
2G	98.41%
4G	95.25%

#### 2G



Overall Rx Quality	# Samples	% PDF	Legends
(Min, <=2)	11341	89.14%	
(2, <=3)	380	2.99%	
(3, <=4)	395	3.10%	
(4, <=5)	404	3.18%	
(5, <=Max)	202	1.59%	
<b>Total</b>	<b>12722</b>	<b>100%</b>	

#### VoLTE



Overall SINR	# Samples	% PDF	Legend s
(Min, <=0)	646	4.75%	
(0, <=5)	3122	22.96%	
(5, <=10)	3353	24.66%	
(10, <=15)	2953	21.72%	
(15, <=Max)	3522	25.91%	
<b>Total</b>	<b>13596</b>	<b>100%</b>	

### III. Technology Details

TSP	% of Time Spent on 3G/VoLTE
BSNL 3G	19.22%
Airtel VoLTE	100%
Jio VoLTE	100%
VIL VoLTE	99.99%

