



TELECOM REGULATORY AUTHORITY OF INDIA

Independent Drive Test Report

Himachal Pradesh LSA

February 2025

Contents

1. Introduction	3
2. Executive Summary (LSA)	3
2.1 Drive test details	3
2.2 Drive test routes	4
2.3 Summary of areas covered	4
2.4 Telecom service providers detected frequency bands	5
2.5 Performance against key QoS parameters	5
3. QoS performance analysis- LSA level	7
3.1 Overview	7
3.2 Voice performance	7
3.3 Data performance	10
4. Detailed QoS performance analysis	13
4.1 Overview	13
4.2 City	13
4.2.1 Drive test route	13
4.2.2 Areas covered	13
4.2.3 Voice performance	14
4.2.4 Data performance	22
4.3 Hotspots	23
4.3.1 Locations	24
4.3.2 Hotspot covered	24
4.3.3 Voice performance	24
4.3.4 Data performance (Auto-selection mode 5G/4G/3G/2G)	26
4.3.5 Data performance (5G Only & 4G Only Download & Upload Speed)	28
4.4 Railways	29
4.4.1 Drive test route	30
4.4.2 Route Covered	30
4.4.3 Voice performance	30
4.4.4 Data performance	34
5. Voice & Data Key findings	36
5.1 Overall Voice	36
5.2 Overall Data	36
5.3 Operator wise Key Findings	37
6. Annexure	41

6.1 Route wise coverage map	41
6.1.1 City	41
6.1.2 Railway Route	44
7. Appendix	47
7.1 Appendix-I	47
7.1.1 Drive test setup	47
7.1.2 Drive test Methodology	49
7.2 Appendix-II	51
7.2.1 Network Performance Parameters for Voice calls	51
7.2.2 Network Performance Parameters Data tests	52

1. Introduction

TRAI Act, 1997 mandates the Authority to ensure the services delivered through various telecommunications networks meet required quality standards prescribed, to protect the interest of the consumers of telecommunication services. TRAI is also responsible for conducting the periodical audit of such services provided by the service providers so as to protect the interest of the consumers of telecommunications service.

Accordingly, TRAI has engaged M/s RedMango Analytics Pvt. Ltd. to undertake assessment of Quality of Service of mobile service through Independent Drive Test (IDT).

In IDT, the performance of all service providers providing service in a Licensed Service Area (LSA) through various technologies (like 2G/ 3G/ 4G/ 5G) for voice and data are measured by conducting drive test. The drive test routes are finalised based on various objective criteria like reported network performance, consumer complaints etc. Methodology adopted for conducting IDT is elaborated in **APPENDIX-I**.

2. Executive Summary (LSA)

2.1 Drive test details

This report covers the findings of the IDT undertaken in Himachal Pradesh License Service Area (LSA) during the month of February 2025 under the supervision of TRAI Regional Office (RO), Delhi. Details of route/area covered during the IDT is as given below:

Sl. No	Drive test route	Type of route	Distance covered (KMs)/ Locations	From date	To date
1	Shimla	City	149.1	25-Feb-2025	26-Feb-2025
2	Shimla	City (Inter-operator calling)	9.0	26-Feb-2025	26-Feb-2025
3	Shimla	Hotspot	6 Locations	26-Feb-2025	27-Feb-2025
4	Kalka to Shimla	Railway	95.7	24-Feb-2025	24-Feb-2025

Table-1: Drive test summary

2.2 Drive test routes

The map provides overview of drive test routes indicating city drive, inter-operator call test, hotspots, Railway route as per the legends shown on the map.

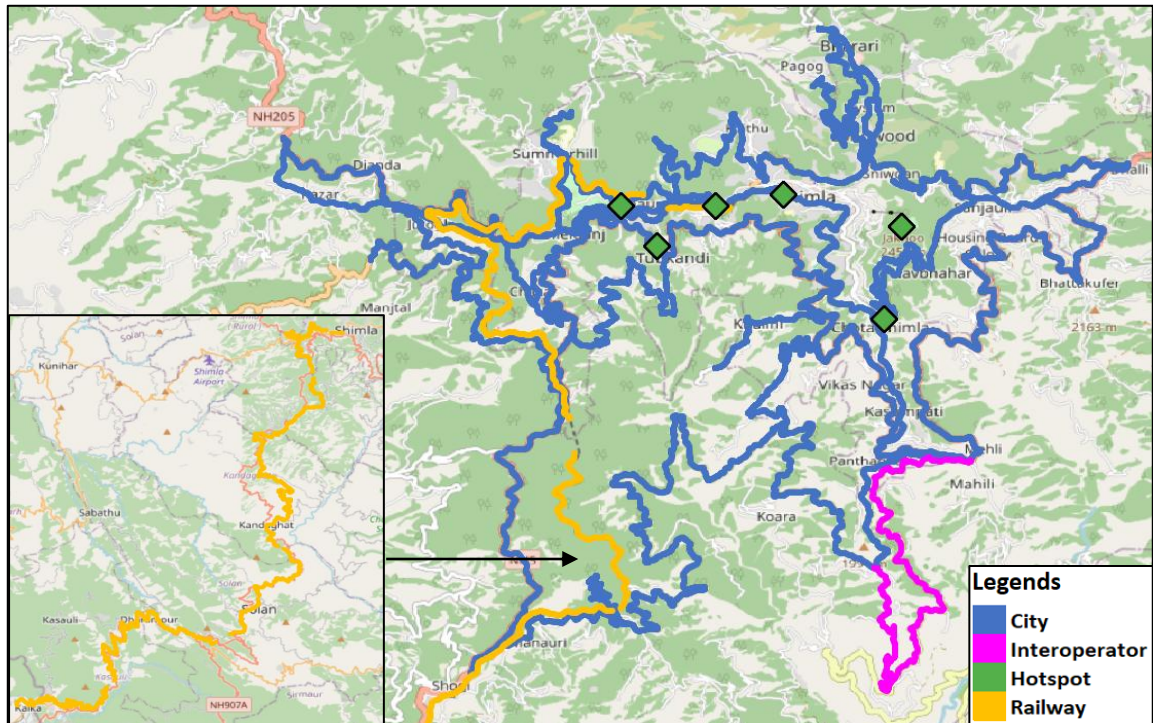


Figure-1: Drive test routes

2.3 Summary of areas covered

a) City- Kasumpti, Chota Shimla, Sanjauli, Tutikandi, Vikas Nagar, Kaithu, Chakar, Mehli, Khalini, Navbahar, Chaura Maidan, Panthaghatti, Bharari, Sniwoan, Longwood etc.

b) Hotspot

1. HP Secretariat
2. Indian Institute of Advance Studies
3. Jakhu Temple
4. New ISBT
5. Old Bus Stand
6. Shimla Railway Station

c) Railway

1. Kalka to Shimla

2.4 Telecom service providers detected frequency bands

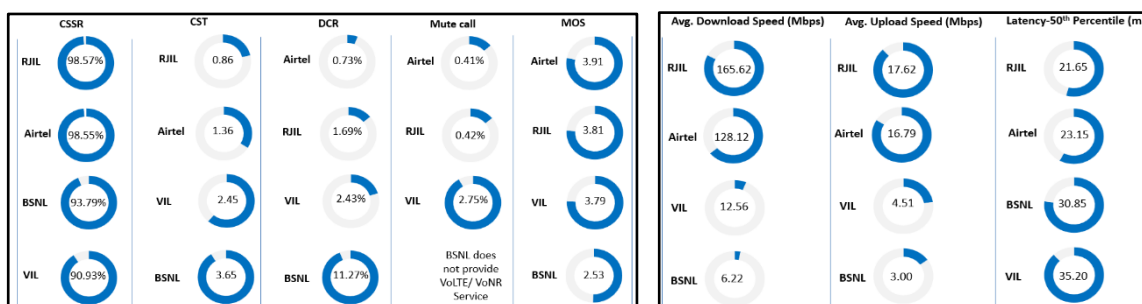
Technologies covered during the IDT and frequency bands in use are summarised in below table.

S.No.	Name of TSP	Technology	Frequency Bands (In MHz)
1	Bharti Airtel Ltd.	2G	900
2	Bharti Airtel Ltd.	4G	900,1800,2300
3	Bharti Airtel Ltd.	5G	3500
4	BSNL	2G	900
5	BSNL	3G	2100
6	BSNL	4G	700,2100
7	Reliance JIO Infocomm Ltd.	4G	850,1800,2300
8	Reliance JIO Infocomm Ltd.	5G	700,3500
9	Vodafone Idea Ltd.	2G	1800
10	Vodafone Idea Ltd.	3G	2100
11	Vodafone Idea Ltd.	4G	1800,2100

Table-2: Telecom service provider (TSP) covered in IDT.

2.5 Performance against key QoS parameters

CSSR: Call setup success rate, CST: Call setup time, DCR: Drop call rates



Summary-Voice services

Call Setup Success Rate: Airtel, BSNL, RJIL and VIL have call setup success rate of 98.55%, 93.79%, 98.57% and 90.93% respectively in Auto-selection mode (5G/4G/3G/2G).

Call Setup Time: Airtel, BSNL, RJIL and VIL have call setup time of 1.36, 3.65, 0.86, & 2.45 seconds in Auto-selection mode (5G/4G/3G/2G).

Drop Call Rate: Airtel, BSNL, RJIL and VIL have drop call rate of 0.73%, 11.27%, 1.69% and 2.43% respectively in Auto-selection mode (5G/4G/3G/2G).

Call Silence/Mute Rate: Airtel, RJIL and VIL have silence call rate 0.41%, 0.42% & 2.75% respectively in packet switched network (4G/5G).

Mean Opinion Score (MOS): Airtel, BSNL, RJIL and VIL have MOS score of 3.91, 2.53, 3.81 & 3.79 respectively.

Summary-Data services

Data Download performance (Dynamic):

BSNL and VIL operating on 4G/3G technologies have average download speed of 6.22 Mbps and 12.56 Mbps respectively. Whereas Airtel and RJIL operating on 4G/5G technologies have average download speed of 128.12 Mbps and 165.62 Mbps respectively.

Data Upload performance (Dynamic):

BSNL and VIL operating on 4G/3G technology have average upload speed of 3.00 and 4.51 Mbps, respectively. Whereas Airtel and RJIL operating on 4G/5G technology have average upload speed of 16.79 Mbps and 17.62 Mbps respectively.

Data performance - Hotspots (in Mbps):

Airtel- 4G D/L: 57.30	4G U/L: 19.04
5G D/L: 224.11	5G U/L: 30.60
BSNL- 4G D/L: 7.58	4G U/L: 3.05
RJIL- 4G D/L: 23.12	4G U/L: 6.31
5G D/L: 194.12	5G U/L: 14.08
VIL- 4G D/L: 9.80	4G U/L: 3.12

Note- "D/L" Download speed, "U/L" Upload speed

QoS Performance Analysis- Himachal Pradesh LSA

3. QoS performance analysis- LSA level

3.1 Overview

This section provides summary of overall QoS performance of the telecom service provider's network in the LSA by aggregating the results of drive tests conducted in the LSA during the month of February-2025 covering city, hotspot and railway. (refer table 1)

3.2 Voice performance

(a) Voice Call Performance in 3G/2G network mode only: 3G/2G network mode testing has been done to reflect experience for respective users as they have only 3G/2G compatible handsets.

Parameters	Service Provider		
	3G/2G network mode only		
	AIRTEL	BSNL	VIL
Call Attempts	249	250	246
Call Setup Success Rate %	98.80	99.60	98.78
Drop Call Rate %	0.81	7.23	0.82
Call Setup Time-Average (Second)	3.47	2.88	5.36
Handover Success Rate %	97.82	99.82	95.85

Table-3: Summary of voice call performance in 3G/2G network mode only.

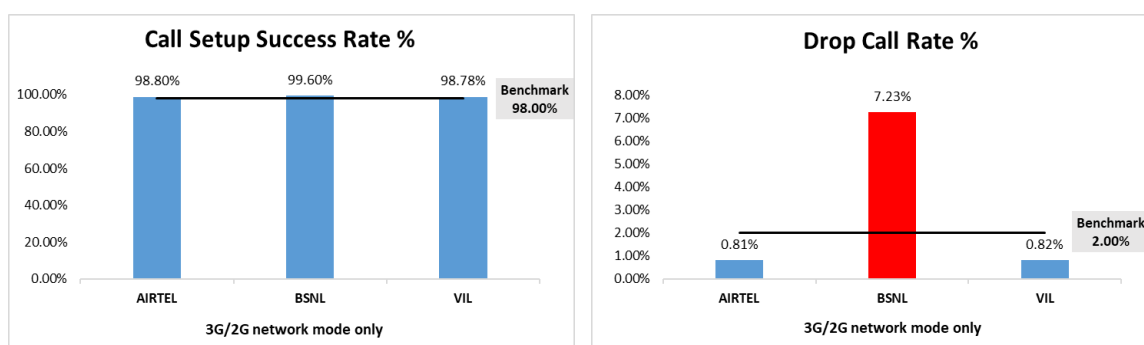


Figure-2: Call setup success rate and drop call rate performance.

Number of unique cell id's covered in Voice test- Technology wise			
Technology	Service Provider		
	3G/2G network mode only		
	AIRTEL	BSNL	VIL
3G	NA	75	1
2G	251	81	144

Table-4: Technology wise number of network cell id's latched during drive test.

Note-

- RJIL does not have 3G/2G network.
- NA- Service provider doesn't provide services in respective technology.

(b) Voice Call Performance in auto network selection mode (5G/4G/3G/2G)

Parameters	Service Provider			
	Auto-selection mode (5G/4G/3G/2G)			
	AIRTEL	BSNL	RJIL	VIL
Call Attempts	415	435	419	452
Call Setup Success Rate %	98.55	93.79	98.57	90.93
Drop Call Rate %	0.73	11.27	1.69	2.43
Call Setup Time-Average (Second)	1.36	3.65	0.86	2.45
Handover Success Rate %	99.79	98.75	99.80	99.82

Table-5: Summary of voice call performance in network auto-selection mode.

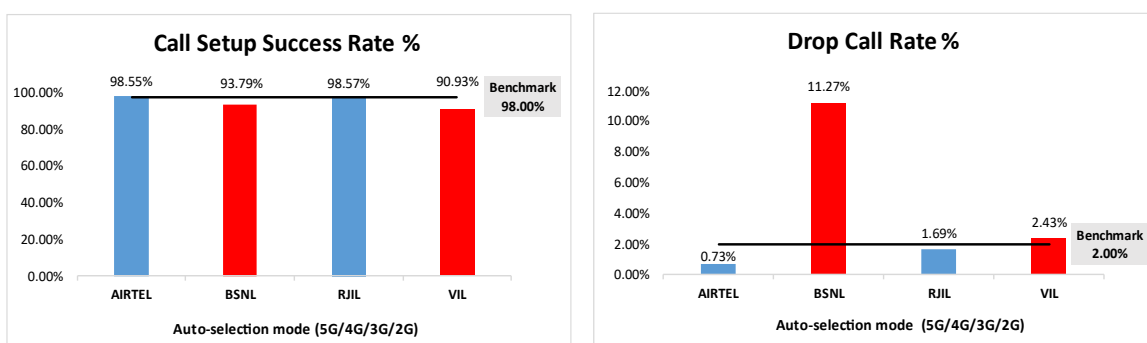


Figure-3: Performance for call setup success rate and drop call rate.

Parameter	Service Provider			
	Mobile-to-Mobile (5G/4G - Open Mode)			
	AIRTEL	BSNL	RJIL	VIL
Call Established (within service provider Network)	246	237	238	255
Number of silence call for >4 Sec	1	NA	1	7
Silence Call Rate %	0.41	NA	0.42	2.75
Number of silence instances for >4 Sec	1	NA	1	7
Number of silence instances for >3 Sec	7	NA	3	14
Number of silence instances for >2 sec	21	NA	15	26
RTP Jitter (4G & 5G) in ms	4.60	NA	8.08	16.90
Packet loss Rate Downlink %	1.64	NA	0.74	2.61
Packet loss Rate Uplink %	1.31	NA	0.57	2.66

Table-6: Summary of silence instances & packet loss rate for mobile to mobile call.

Note-

- NA- Due to unavailability of packet switched (VoLTE & VoNR) network in BSNL, silence instances are not captured.

Number of unique cell id's covered in Voice test- Technology wise				
Technology	Service Provider			
	Auto Mode (5G/4G/3G/2G)			
	AIRTEL	BSNL	RJIL	VIL
5G	0	NA	333	NA
4G	898	212	804	343
3G	NA	77	NA	0
2G	4	204	NA	62

Table-7: Technology wise number of network cell id's latched during drive test.

Note-

- NA- Service provider doesn't provide services on respective technology.

(c) Mean Opinion Score (MOS) performance for speech quality:

Mean opinion score indicates quality of speech observed during the drive test across different technologies. This parameter has been calculated for mobile-to-mobile calls made within same operator network in auto mode (5G/4G/3G/2G). As per ITU-T Recommendation P.863.1, MOS score values means: 5-Excellent, 4-Good, 3-Fair, 2-Poor, 1-Bad.

Speech Quality (MOS) distribution	Service Provider			
	AIRTEL	BSNL	RJIL	VIL
Total Number of MOS Samples for calls in table-6	1437	1221	1382	1414
Speech Quality (Average MOS Score)	3.91	2.53	3.81	3.79
Number of samples with MOS ≥ 4 to < 5 (Excellent)	1128	0	855	832
Number of samples with MOS ≥ 3 to < 4 (Good)	221	381	396	418
Number of samples with MOS ≥ 2 to < 3 (Fair)	32	557	97	79
Number of samples with MOS ≥ 1 to < 2 (Poor)	56	283	34	85
%age of samples with MOS ≥ 4 to < 5 (Excellent)	78.50%	0.00%	61.87%	58.84%
%age of samples with MOS ≥ 3 to < 4 (Good)	15.38%	31.20%	28.65%	29.56%
%age of samples with MOS ≥ 2 to < 3 (Fair)	2.23%	45.62%	7.02%	5.59%
%age of samples with MOS ≥ 1 to < 2 (Poor)	3.90%	23.18%	2.46%	6.01%

Table-8: Summary of speech quality (MOS) samples.

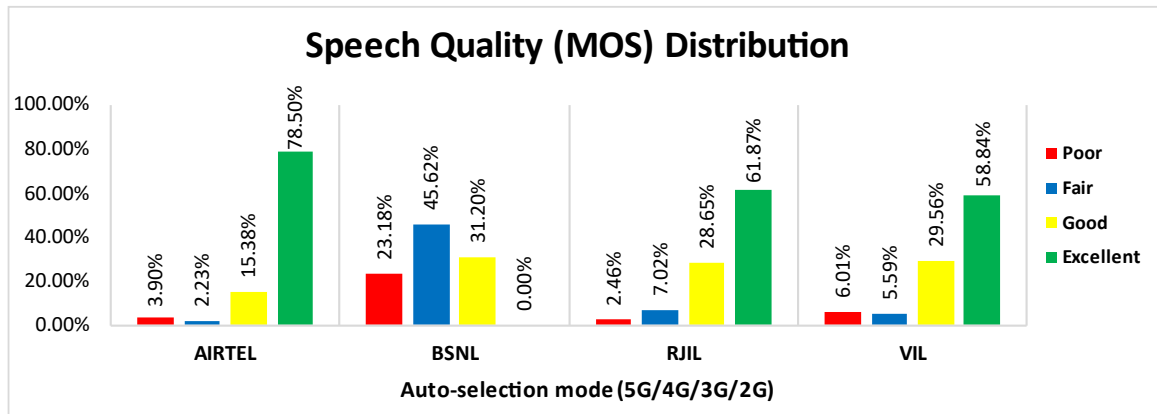


Figure- 4: Distribution of samples in MOS score range.

(d) Inter-service provider voice call performance: To check the performance of inter-service provider call setup success rate, total 27 to 29 inter operator calls were attempted. The call setup success rate and call setup time observation are as below.

Call setup success rate %				
From Service Provider	To Service Provider			
	AIRTEL	BSNL	RJIL	VIL
AIRTEL	NA	100.00	100.00	100.00
BSNL	100.00	NA	100.00	100.00
RJIL	100.00	100.00	NA	93.10
VIL	100.00	100.00	100.00	NA

Table-9: Call setup success rate across service providers.

Note-
• NA-Only Inter-operator calls were measured during test.

Call setup time average (seconds)				
From Service Provider	To Service Provider			
	AIRTEL	BSNL	RJIL	VIL
AIRTEL	NA	3.61	4.73	2.05
BSNL	3.12	NA	3.00	2.66
RJIL	2.41	4.16	NA	1.91
VIL	2.03	3.34	2.66	NA

Table-10: Call setup time across service providers.

Note-
• NA- Only inter-operator calls were measured during test.

3.3 Data performance

(a) Data Parameters (Auto-selection mode- 5G/4G/3G/2G)

Parameters	Service Provider			
	Auto-selection mode (5G/4G/3G/2G)			
	AIRTEL	BSNL	RJIL	VIL

Download Throughput (Mbits/s)	Average	128.12	6.22	165.62	12.56
	80th Percentile	222.37	9.58	285.11	19.43
	20th Percentile	12.52	1.11	10.21	3.97
Upload Throughput (Mbits/s)	Average	16.79	3.00	17.62	4.51
	80th Percentile	26.09	4.61	31.28	6.96
	20th Percentile	2.48	1.23	2.56	1.39
Latency (ms)	50th Percentile	23.15	30.85	21.65	35.20

Table-11: Summary of data performance in network auto-selection mode.

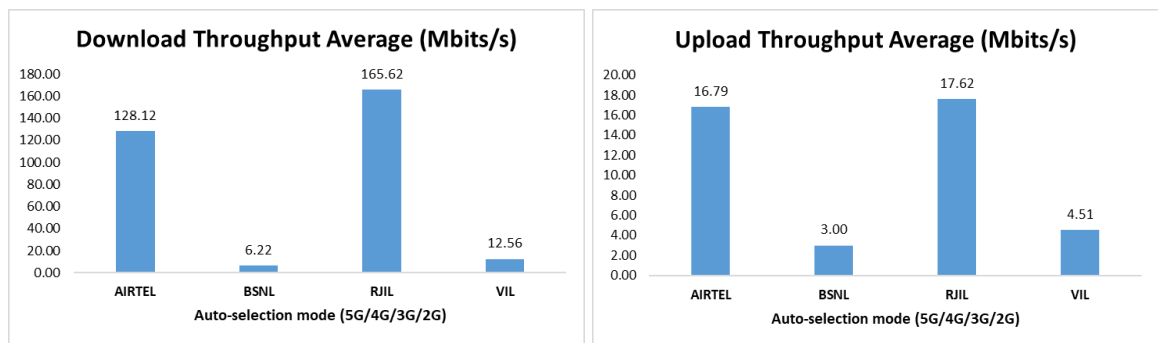


Figure- 5: Download and upload throughput.

Number of unique cell id's covered in Data test- Technology wise				
Technology	Service Provider			
	Auto-selection mode 5G/4G/3G/2G			
	AIRTEL	BSNL	RJIL	VIL
5G	0	NA	501	NA
4G	906	310	310	350
3G	NA	93	NA	8
2G	7	36	NA	47

Table-12: Technology wise number of network cell id's latched during drive test.

Note-

- NA- Service provider doesn't provide services in respective technology.

Detailed QoS Performance Analysis

4. Detailed QoS performance analysis

4.1 Overview

This section covers analysis on performance of various categories of drives like city, hotspots and railway for all telecom service providers, the results of drive tests conducted are shown individually for respective areas/locations.

4.2 City

Drive test has been conducted from 25th February 2025 to 26th February 2025 in Shimla. (refer table-1)

4.2.1 Drive test route



Figure- 6: Drive test routes.

4.2.2 Areas covered

Kasumpati, Chota Shimla, Sanjauli, Tutikandi, Vikas Nagar, Kaithu, Chakar, Mehli, Khalini, Navbahar, Chaura Maidan, Panthaghatti, Bharari, Sniwoan, Longwood etc.

4.2.3 Voice performance

(a) Voice Call Performance in 3G/2G network mode only: 3G/2G network mode testing has been done to reflect experience for respective users as they have only 3G/2G compatible handsets.

Parameters	Service Provider		
	3G/2G network mode only		
	AIRTEL	BSNL	VIL
Call Attempts	249	250	246
Call Setup Success Rate %	98.80	99.60	98.78
Drop Call Rate %	0.81	7.23	0.82
Call Setup Time-Average (Second)	3.47	2.88	5.36
Handover Success Rate %	97.82	99.82	95.85

Table-13: Summary of voice call performance in 3G/2G network mode only.

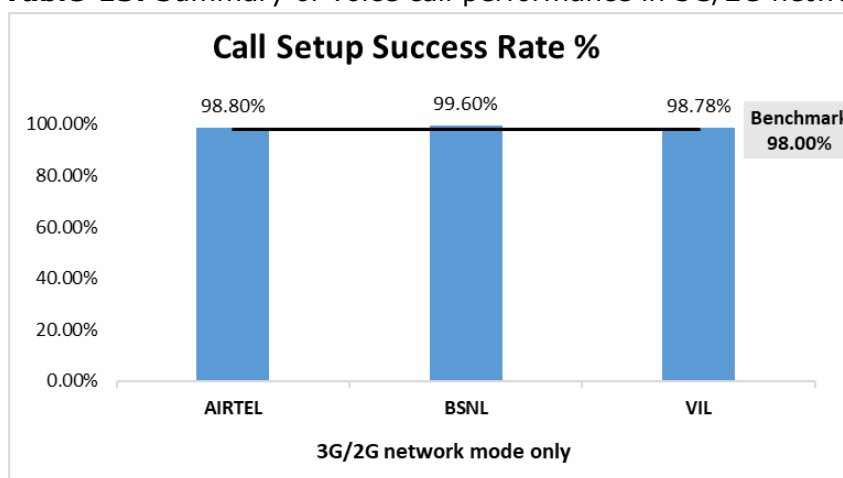


Figure-7: Performance for call setup success rate.

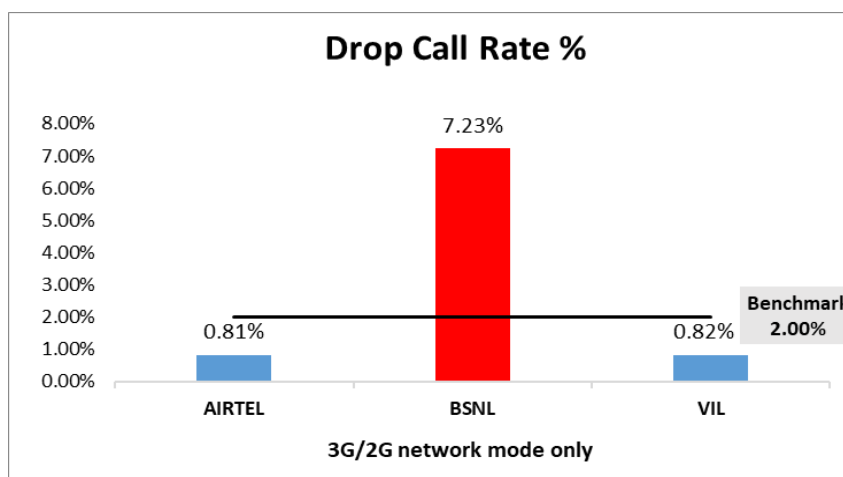


Figure-8: Performance for drop call rate.

(b) Network Technology: This section represents time spent on various network technologies.

Technology	Service Provider		
	AIRTEL	BSNL	VIL
3G	NA	80.80%	1.90%
2G	99.99%	19.19%	98.08%
Limited Service	0.01%	0.01%	0.02%

Table-14: Time spent on technology during drive test 3G/2G network mode only.

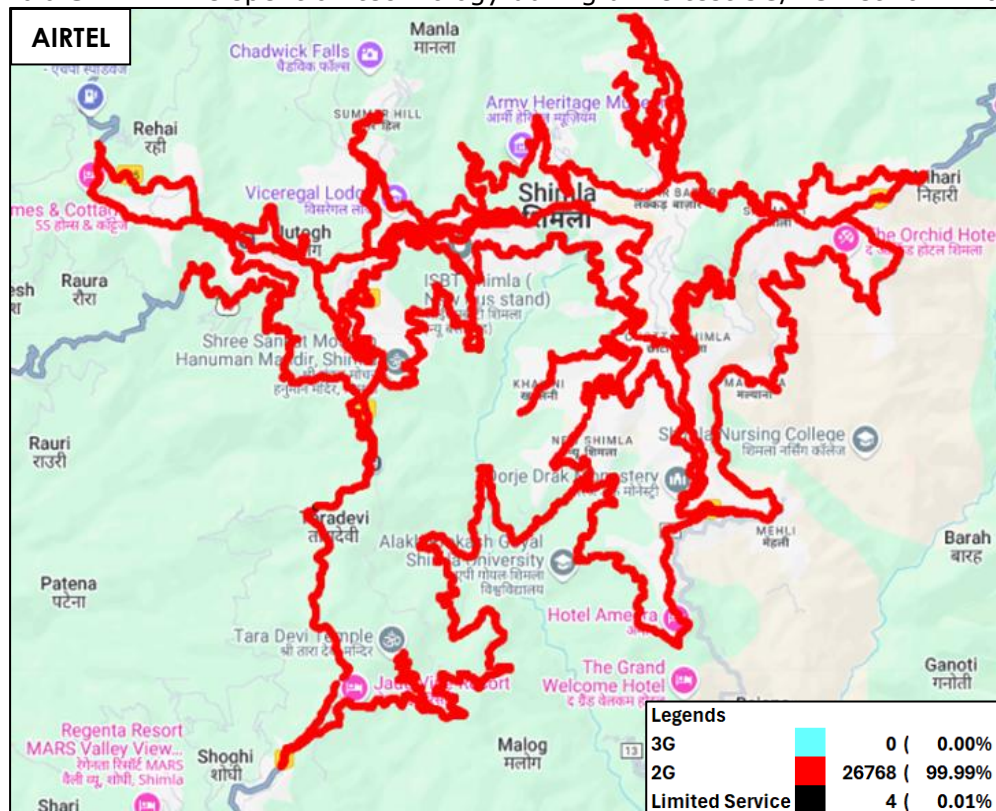


Figure-9: Serving technology plots 3G/2G network mode – AIRTEL.

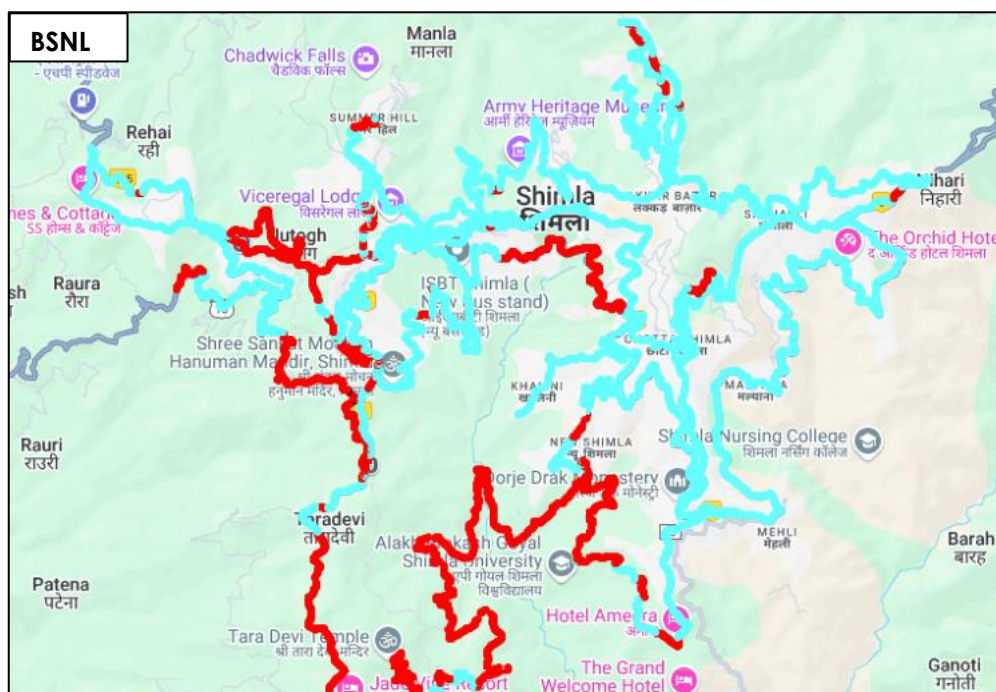


Figure-10: Serving technology plots 3G/2G network mode – BSNL.

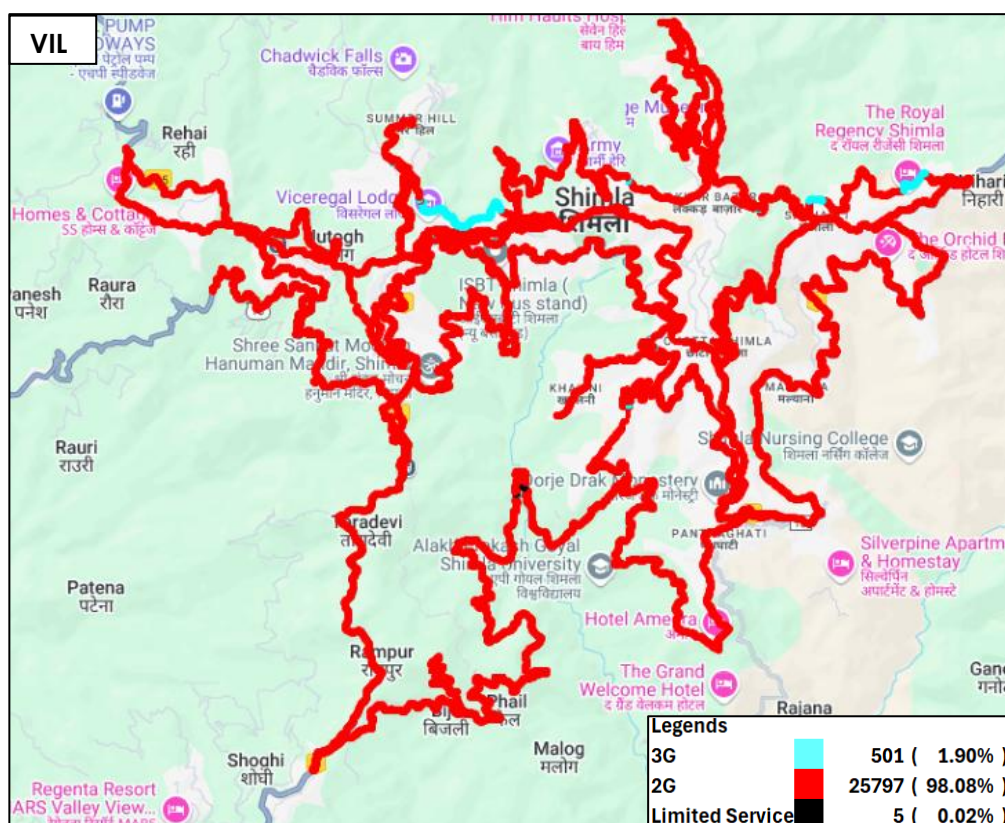


Figure-11: Serving technology plots 3G/2G network mode –VIL.

(c) Network Signal Strength distribution: The following chart represents signal strength distribution for 3G/2G network mode only. (refer figure-34, 35 & 36 for map view)

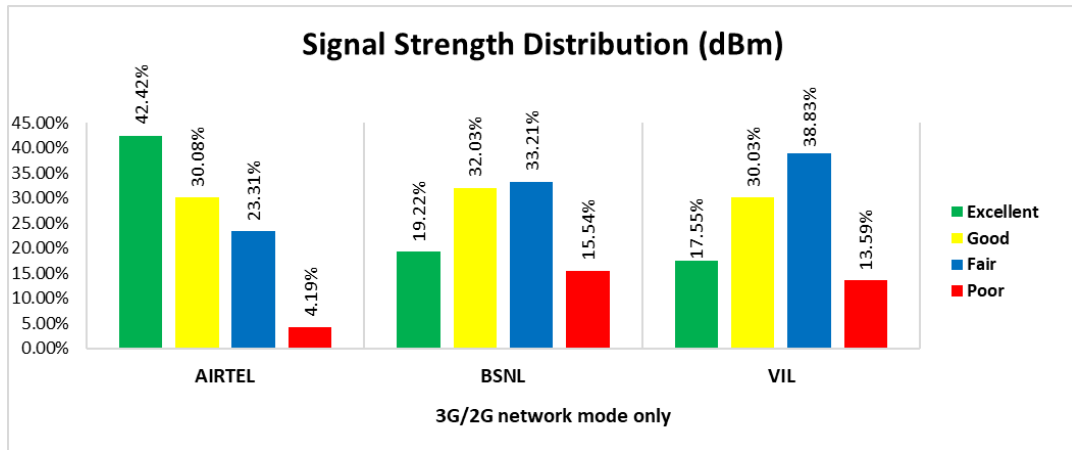


Figure-12: Signal strength distribution 3G/2G network mode only.

Observations:

- Airtel has 42% of samples falling in the excellent signal strength category.
- BSNL has 19% of samples falling in the excellent signal strength category.
- VIL has 18% of samples falling in the excellent signal strength category.

(d) Voice Call Performance in auto network selection mode (5G/4G/3G/2G)

Parameters	Service Provider			
	Auto-selection mode (5G/4G/3G/2G)			
	AIRTEL	BSNL	RJIL	VIL
Call Attempts	255	257	258	258
Call Setup Success Rate %	100.00	97.28	99.61	100.00
Drop Call Rate %	0.00	6.40	0.39	0.00
Call Setup Time Average (Second)	1.34	3.86	0.86	2.05
Handover Success Rate %	99.82	99.07	99.75	99.84

Table-15: Summary of voice call performance in network auto-selection mode.

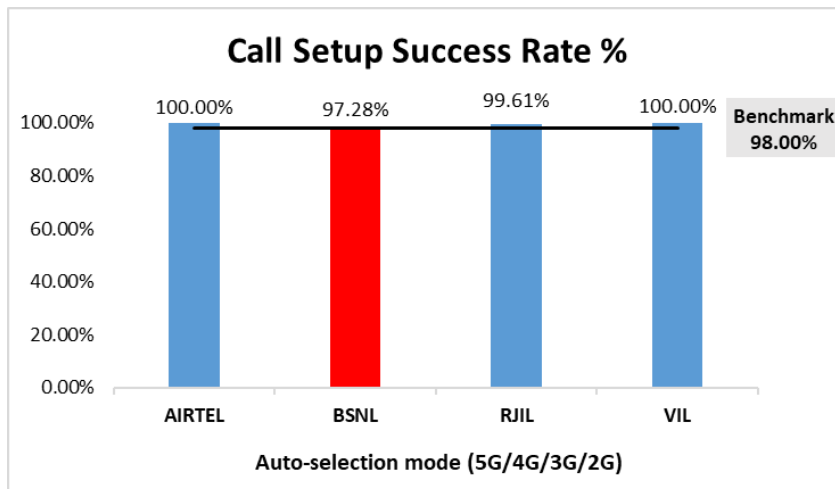


Figure-13: Performance for call setup success rate.

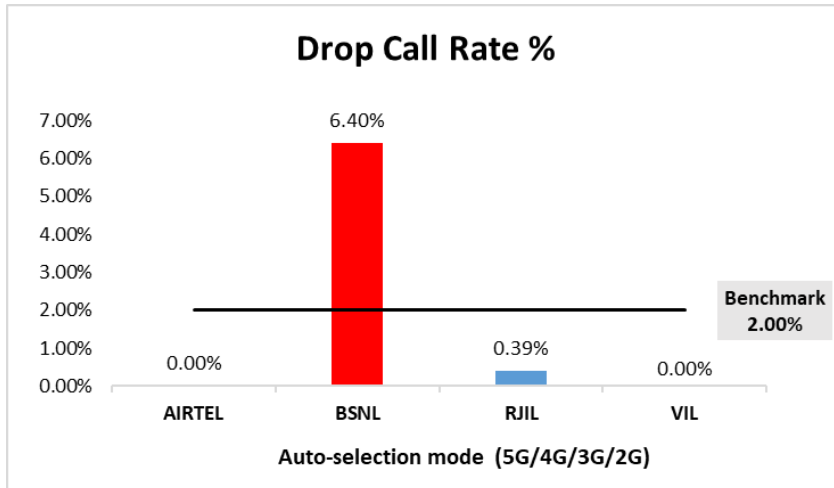


Figure-14: Performance for drop call rate.

Parameter	Service Provider			
	Mobile-to-Mobile (5G/4G - Open Mode)			
	AIRTEL	BSNL	RJIL	VIL
Call Established (within service provider Network)	246	237	238	255
Number of silence call for >4 Sec	1	NA	1	7
Silence Call Rate %	0.41	NA	0.42	2.75
Number of silence instances for >4 Sec	1	NA	1	7
Number of silence instances for >3 Sec	7	NA	3	14
Number of silence instances for >2 sec	21	NA	15	26
RTP Jitter (4G & 5G) in ms	4.60	NA	8.08	16.90
Packet loss Rate Downlink %	1.64	NA	0.74	2.61
Packet loss Rate Uplink %	1.31	NA	0.57	2.66

Table-16: Summary of silence instances & packet loss rate for mobile to mobile call.

Note-

- NA- Due to unavailability of packet switched (VoLTE & VoNR) network in BSNL silence instances are not captured.

(e) Mean Opinion Score (MOS) performance for speech quality:

Mean opinion score indicate quality of speech observed during the drive test across different technologies. This parameter has been calculated for mobile to mobile calls made within same operator network in auto mode (5G/4G/3G/2G). As per ITU-T Recommendation P.863.1, MOS score values means: 5-Excellent, 4-Good, 3-Fair, 2-Poor, 1-Bad.

Speech Quality (MOS) distribution	Service Provider			
	AIRTEL	BSNL	RJIL	VIL
Total Number of MOS Samples for calls in table-6	1437	1221	1382	1414
Speech Quality (Average MOS Score)	3.91	2.53	3.81	3.79
Number of samples with MOS ≥ 4 to < 5 (Excellent)	1128	0	855	832
Number of samples with MOS ≥ 3 to < 4 (Good)	221	381	396	418
Number of samples with MOS ≥ 2 to < 3 (Fair)	32	557	97	79
Number of samples with MOS ≥ 1 to < 2 (Poor)	56	283	34	85
%age of samples with MOS ≥ 4 to < 5 (Excellent)	78.50%	0.00%	61.87%	58.84%
%age of samples with MOS ≥ 3 to < 4 (Good)	15.38%	31.20%	28.65%	29.56%
%age of samples with MOS ≥ 2 to < 3 (Fair)	2.23%	45.62%	7.02%	5.59%
%age of samples with MOS ≥ 1 to < 2 (Poor)	3.90%	23.18%	2.46%	6.01%

Table-17: Summary of speech quality (MOS) samples.

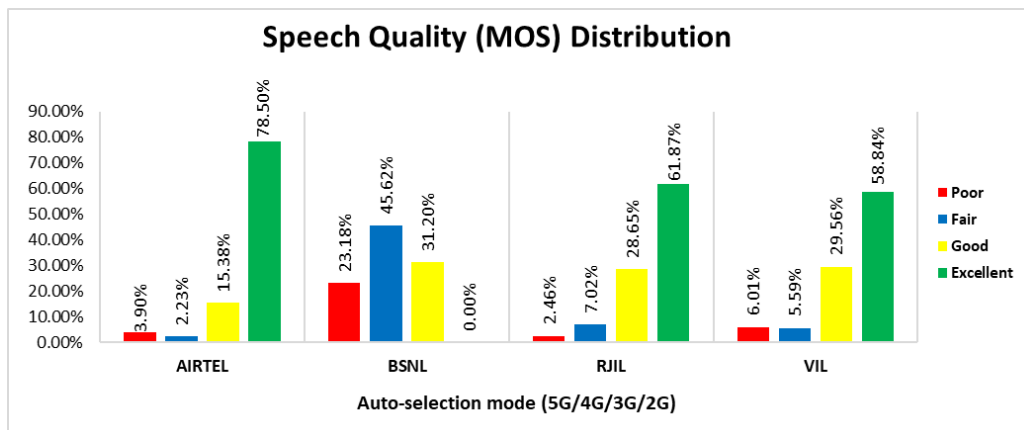


Figure-15: Distribution of samples in MOS score range.

(f) Network Technology: This section represents time spent on various network technologies.

Technology	Service Provider			
	AIRTEL	BSNL	RJIL	VIL
5G	2.37%	NA	20.76%	NA
4G	97.63%	11.71%	79.24%	96.74%
3G	NA	40.10%	NA	0.00%
2G	0.00%	47.74%	NA	3.26%
Limited Service	0.00%	0.44%	0.00%	0.00%

Table-18: Time spent on technology during drive test.

Note-

- NA- Service provider doesn't provide services in respective technology.

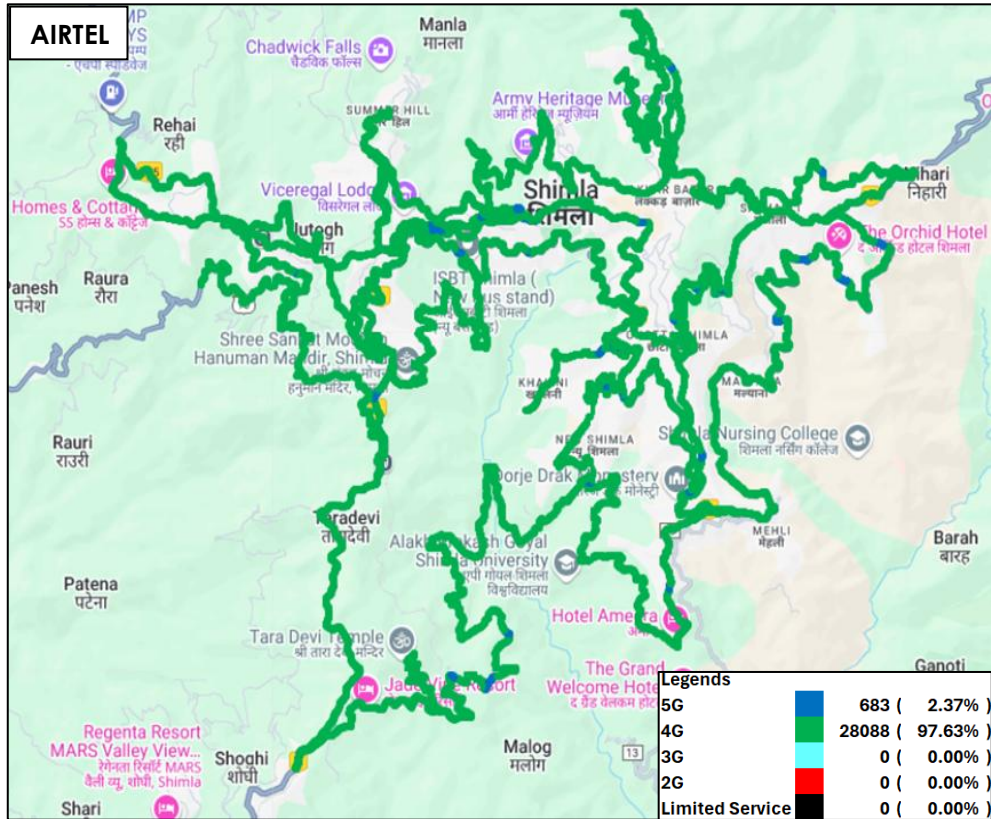


Figure-16: Serving technology plots in auto-selection mode (5G/4G/3G/2G) –AIRTEL.

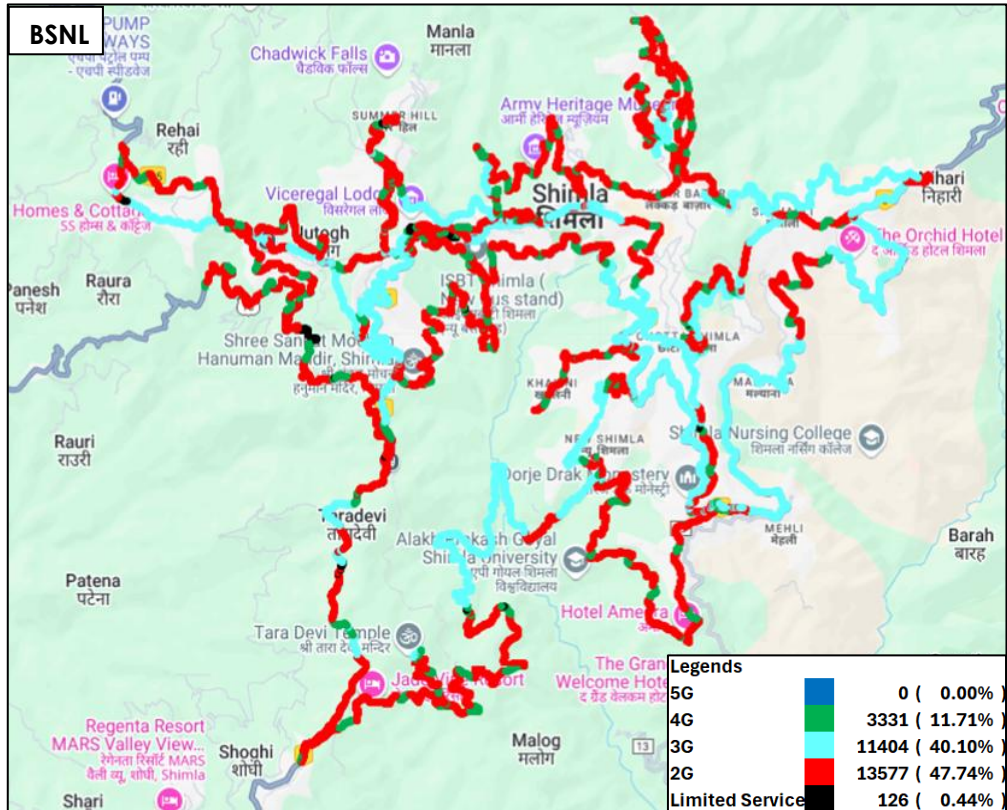


Figure-17: Serving technology plots in auto-selection mode (5G/4G/3G/2G) –BSNL.

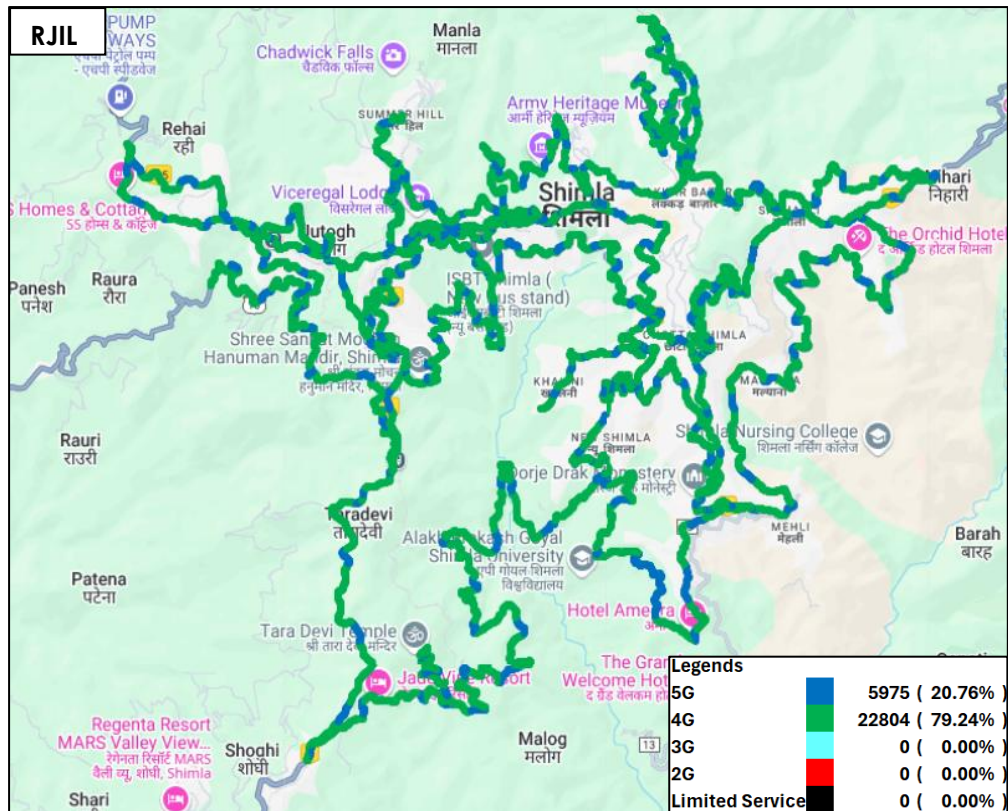


Figure-18: Serving technology plots in auto-selection mode (5G/4G/3G/2G)- RJIL.

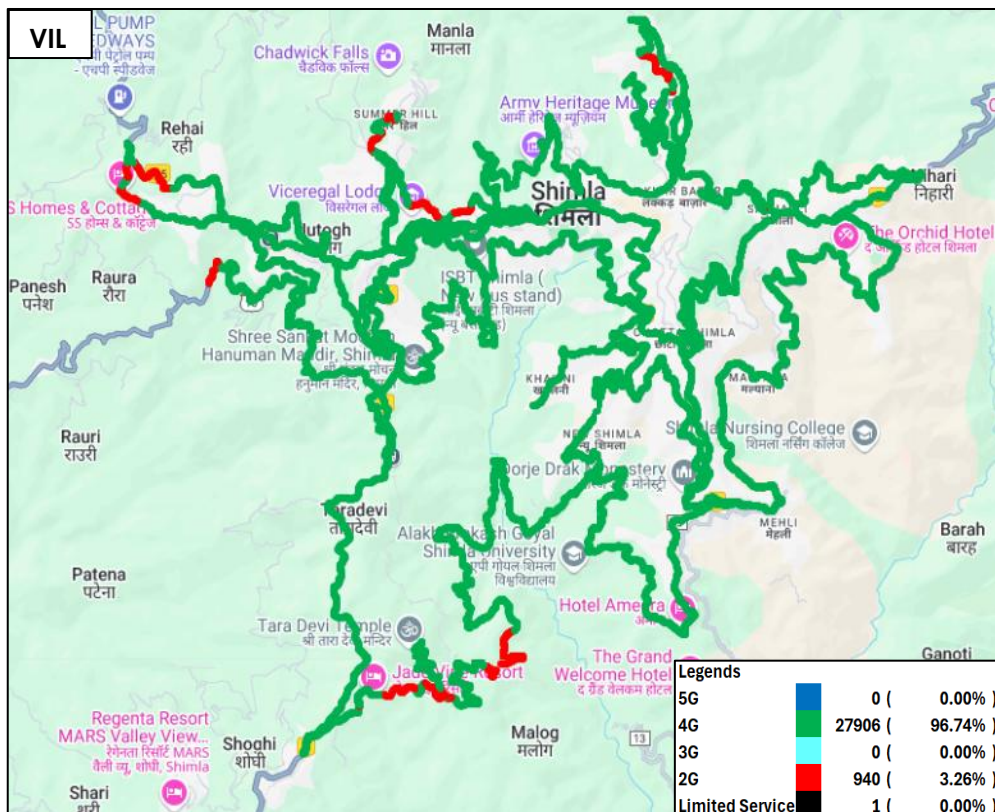


Figure-19: Serving technology plots in auto-selection mode (5G/4G/3G/2G) – VIL.

(g) Network Signal Strength distribution: The following chart provide signal strength distribution for auto-selection mode (5G/4G/3G/2G). (refer figure-37, 38, 39 & 40 for map view)

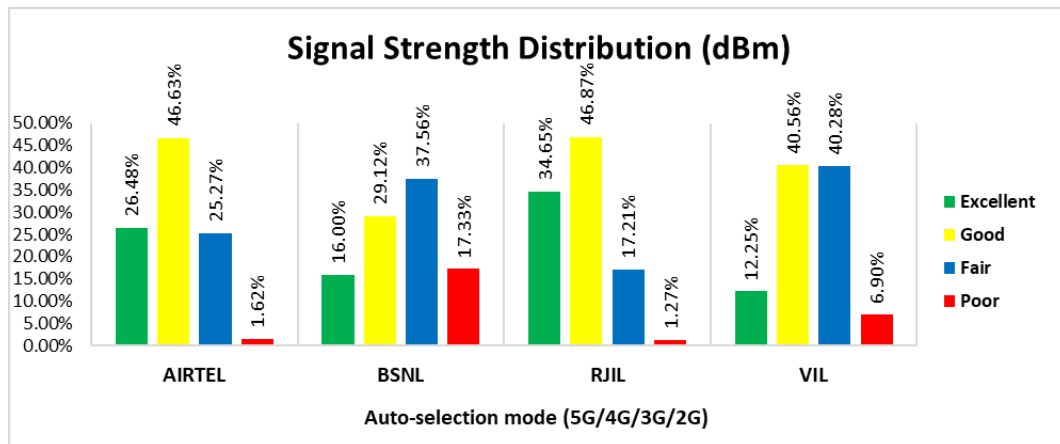


Figure-20: Signal strength distribution auto-selection mode 5G/4G/3G/2G.

Observations:

- Airtel has 26% of samples falling in the excellent signal strength category.
- BSNL has 16% of samples falling in the excellent signal strength category.
- RJIL has 35% of samples falling in the excellent signal strength category.
- VIL has 12% of samples falling in the excellent signal strength category.

4.2.4 Data performance

(a) Data Parameters (Auto-selection mode- 5G/4G/3G/2G)

Parameters		Service Provider			
		Auto-selection mode (5G/4G/3G/2G)			
		AIRTEL	BSNL	RJIL	VIL
Download Throughput (Mbits/s)	Average	167.55	6.28	211.69	12.70
	80th Percentile	254.98	10.02	343.31	19.59
	20th Percentile	41.32	1.23	49.87	5.00
Upload Throughput (Mbits/s)	Average	21.09	2.67	23.56	4.38
	80th Percentile	36.28	3.49	39.14	6.72
	20th Percentile	4.06	1.23	4.17	1.64
Latency (ms)	50th Percentile	22.65	31.05	18.65	33.40

Table-19: Summary of Data performance in network auto-selection mode.

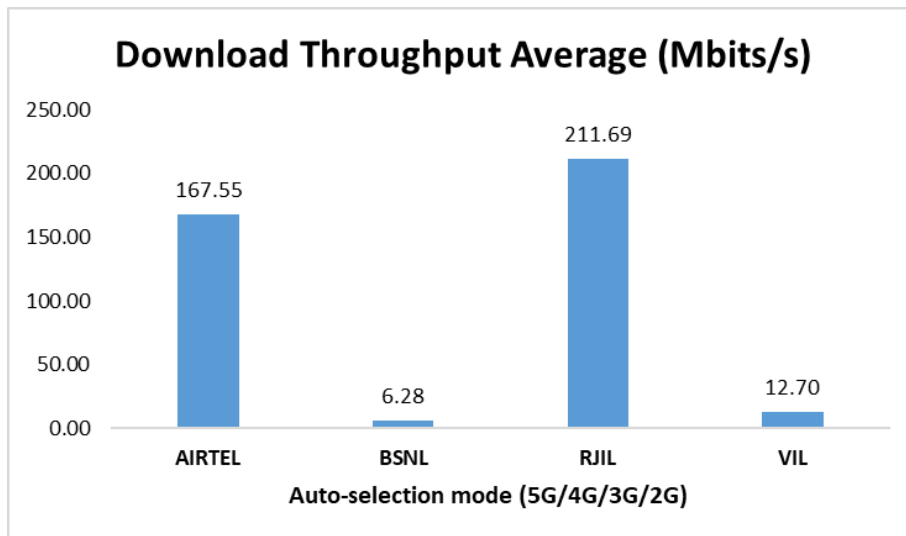


Figure- 21: Download throughput.

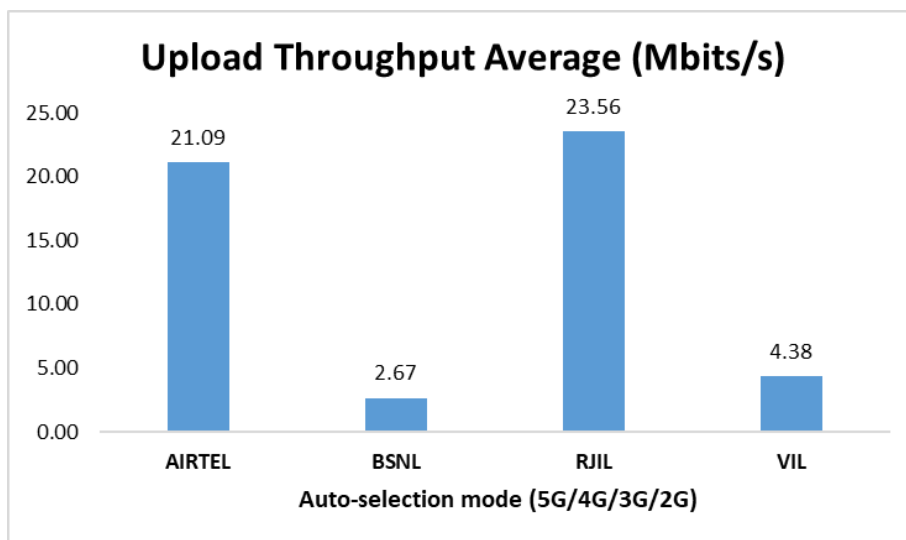


Figure- 22: Upload throughput.

4.3 Hotspots

Hotspot testing has been done on 26th February 2025 and 27th February 2025. Six locations have been tested in the city.

4.3.1 Locations

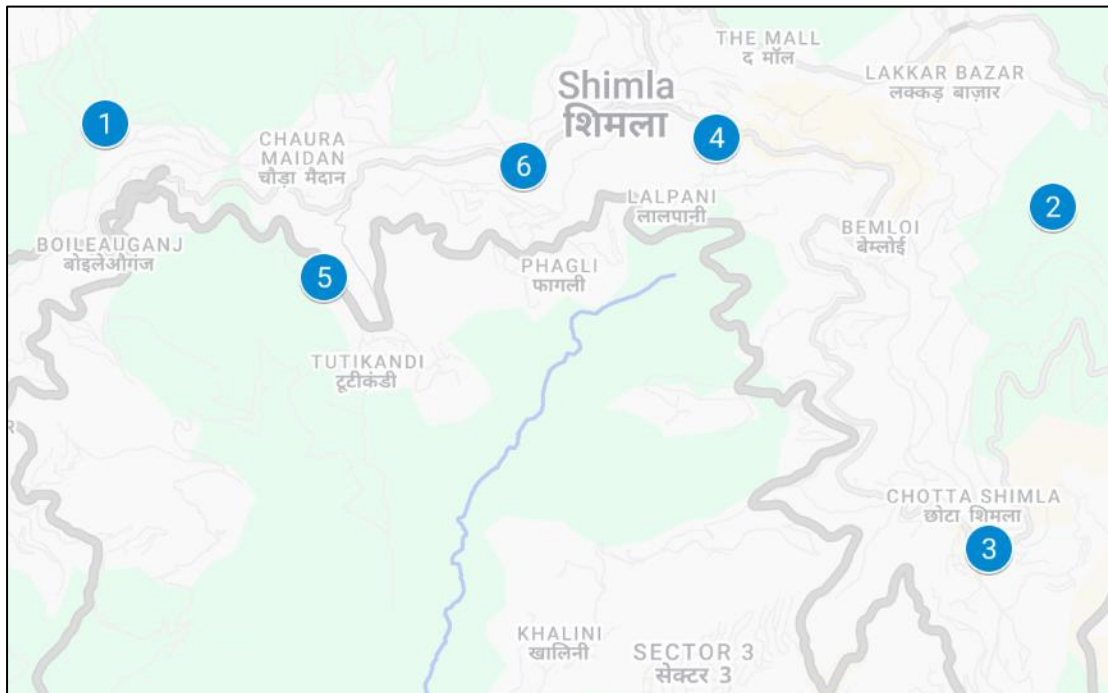


Figure- 23: Hotspot locations

4.3.2 Hotspot covered

1. HP Secretariat
2. Indian Institute of Advance Studies
3. Jakhu Temple
4. New ISBT
5. Old Bus Stand
6. Shimla Railway Station

4.3.3 Voice performance

Overall Voice Performance				
Parameters	Service Provider			
	Auto-selection mode (5G/4G/3G/2G)			
	AIRTEL	BSNL	RJIL	VIL
Call Attempt	60	60	60	60
Call Setup Success Rate %	100.00	100.00	100.00	98.33
Drop Call Rate %	0.00	1.67	0.00	0.00
Call Setup Time-Average (Sec)	1.27	3.12	0.74	2.80

Table-20: Overall summary of voice call performance in network auto-selection mode (5G/4G/3G/2G).

HP Secretariat				
Parameters	Service Provider			
	Auto-selection mode (5G/4G/3G/2G)			
	AIRTEL	BSNL	RJIL	VIL
Call Attempt	10	10	10	10

Call Setup Success Rate %	100.00	100.00	100.00	90.00
Drop Call Rate %	0.00	0.00	0.00	0.00
Call Setup Time-Average (Sec)	1.25	2.14	0.65	4.74

Table-21: Summary of voice call performance in network auto-selection mode (5G/4G/3G/2G).

Indian Institute of Advance Studies				
Parameters	Service Provider			
	Auto-selection mode (5G/4G/3G/2G)			
	AIRTEL	BSNL	RJIL	VIL
Call Attempt	10	10	10	10
Call Setup Success Rate %	100.00	100.00	100.00	100.00
Drop Call Rate %	0.00	0.00	0.00	0.00
Call Setup Time-Average (Sec)	1.26	3.47	0.88	3.78

Table-22: Summary of voice call performance in network auto-selection mode (5G/4G/3G/2G).

Jakhu Temple				
Parameters	Service Provider			
	Auto-selection mode (5G/4G/3G/2G)			
	AIRTEL	BSNL	RJIL	VIL
Call Attempt	10	10	10	10
Call Setup Success Rate %	100.00	100.00	100.00	100.00
Drop Call Rate %	0.00	10.00	0.00	0.00
Call Setup Time-Average (Sec)	1.19	2.63	0.59	1.93

Table-23: Summary of voice call performance in network auto-selection mode (5G/4G/3G/2G).

New ISBT				
Parameters	Service Provider			
	Auto-selection mode (5G/4G/3G/2G)			
	AIRTEL	BSNL	RJIL	VIL
Call Attempt	10	10	10	10
Call Setup Success Rate %	100.00	100.00	100.00	100.00
Drop Call Rate %	0.00	0.00	0.00	0.00
Call Setup Time-Average (Sec)	1.28	2.40	0.60	1.92

Table-24: Summary of voice call performance in network auto-selection mode (5G/4G/3G/2G).

Old Bus Stand				
Parameters	Service Provider			
	Auto-selection mode (5G/4G/3G/2G)			
	AIRTEL	BSNL	RJIL	VIL
Call Attempt	10	10	10	10
Call Setup Success Rate %	100.00	100.00	100.00	100.00
Drop Call Rate %	0.00	0.00	0.00	0.00
Call Setup Time-Average (Sec)	1.37	4.26	0.57	1.89

Table-25: Summary of voice call performance in network auto-selection mode (5G/4G/3G/2G).

Shimla Railway Station				
Parameters	Service Provider			
	Auto-selection mode (5G/4G/3G/2G)			
	AIRTEL	BSNL	RJIL	VIL
Call Attempt	10	10	10	10

Call Setup Success Rate %	100.00	100.00	100.00	100.00
Drop Call Rate %	0.00	0.00	0.00	0.00
Call Setup Time-Average (Sec)	1.25	3.85	1.16	2.74

Table-26: Summary of voice call performance in network auto-selection mode (5G/4G/3G/2G).

4.3.4 Data performance (Auto-selection mode 5G/4G/3G/2G)

Overall Data Performance				
Parameters	Service Provider			
	Auto-selection mode (5G/4G/3G/2G)			
	AIRTEL	BSNL	RJIL	VIL
Download Throughput Average (Mbits/s)	175.97	7.27	187.86	12.17
Download Throughput 80th Percentile (Mbit/s)	292.03	9.33	201.47	21.92
Download Throughput 20th Percentile (Mbit/s)	34.55	1.82	0.75	2.43
Download Session Setup Success Rate %	100.00	96.67	100.00	76.67
Upload Throughput Average (Mbits/s)	25.58	2.33	14.08	3.71
Upload Throughput 80th Percentile (Mbit/s)	49.71	2.61	14.82	7.58
Upload Throughput 20th Percentile (Mbit/s)	1.67	1.05	1.73	1.04
Upload Session Setup Success Rate %	100.00	93.33	100.00	80.00
Web Browsing Delay (Second)	2.86	2.59	2.92	3.01
Youtube Initial Buffer Delay (Second)	1.58	5.05	2.88	3.37
Latency (ms)-50th Percentile	23.50	30.20	23.75	37.03
Jitter (ms)	23.29	18.73	29.27	136.14
Packet Loss Rate%	2.73	21.87	4.32	35.30
Packet Loss Rate- 90th percentile	8.00	60.35	11.30	92.30

Table-27: Overall Summary of Data performance in network auto-selection mode (5G/4G/3G/2G).

HP Secretariat				
Parameters	Service Provider			
	Auto-selection mode (5G/4G/3G/2G)			
	AIRTEL	BSNL	RJIL	VIL
Download Throughput Average (Mbits/s)	199.18	8.40	22.21	9.21
Download Session Setup Success Rate %	100.00	100.00	100.00	100.00
Upload Throughput Average (Mbits/s)	3.06	1.26	2.02	1.37
Upload Session Setup Success Rate %	100.00	100.00	100.00	100.00
Web Browsing Delay (Second)	1.03	2.81	3.29	2.82
Youtube Initial Buffer Delay (Second)	3.99	7.02	5.03	7.85
Latency (ms)-50th Percentile	22.85	31.65	28.80	33.33
Jitter (ms)	8.03	8.56	43.45	11.46
Packet Loss Rate%	0.10	4.30	10.00	1.60

Table-28: Summary of Data performance in network auto-selection mode (5G/4G/3G/2G).

Indian Institute of Advance Studies				
Parameters	Service Provider			
	Auto-selection mode (5G/4G/3G/2G)			
	AIRTEL	BSNL	RJIL	VIL
Download Throughput Average (Mbits/s)	27.82	22.32	1.55	0.51

Download Session Setup Success Rate %	100.00	100.00	100.00	20.00
Upload Throughput Average (Mbits/s)	1.51	7.44	4.09	1.01
Upload Session Setup Success Rate %	100.00	100.00	100.00	40.00
Web Browsing Delay (Second)	7.43	1.20	1.98	9.88
Youtube Initial Buffer Delay (Second)	-	0.83	6.68	-
Latency (ms)-50th Percentile	32.10	25.78	24.15	263.00
Jitter (ms)	71.43	3.01	12.64	400.63
Packet Loss Rate%	9.90	0.00	0.80	86.50

Table-29: Summary of Data performance in network auto-selection mode (5G/4G/3G/2G).

Note-

- “-“All YouTube test were failed.

Jakhu Temple				
Parameters	Service Provider			
	Auto-selection mode (5G/4G/3G/2G)			
	AIRTEL	BSNL	RJIL	VIL
Download Throughput Average (Mbits/s)	54.65	1.85	30.31	2.67
Download Session Setup Success Rate %	100.00	100.00	100.00	80.00
Upload Throughput Average (Mbits/s)	12.18	0.51	1.71	3.43
Upload Session Setup Success Rate %	100.00	100.00	100.00	80.00
Web Browsing Delay (Second)	1.13	16.62	5.59	3.56
Youtube Initial Buffer Delay (Second)	1.16	9.73	-	5.49
Latency (ms)-50th Percentile	23.30	50.00	23.00	52.00
Jitter (ms)	3.45	72.41	30.06	74.48
Packet Loss Rate%	0.20	83.00	2.50	24.60

Table-30: Summary of Data performance in network auto-selection mode (5G/4G/3G/2G).

Note-

- “-“All YouTube test were failed.

New ISBT				
Parameters	Service Provider			
	Auto-selection mode (5G/4G/3G/2G)			
	AIRTEL	BSNL	RJIL	VIL
Download Throughput Average (Mbits/s)	469.89	1.82	908.13	26.19
Download Session Setup Success Rate %	100.00	80.00	100.00	100.00
Upload Throughput Average (Mbits/s)	88.93	0.90	60.82	8.00
Upload Session Setup Success Rate %	100.00	80.00	100.00	100.00
Web Browsing Delay (Second)	1.35	6.73	1.30	1.81
Youtube Initial Buffer Delay (Second)	0.59	-	0.56	0.68
Latency (ms)-50th Percentile	18.90	35.45	16.88	32.00
Jitter (ms)	4.54	39.33	6.84	2.48
Packet Loss Rate%	0.00	37.70	0.00	0.50

Table-31: Summary of Data performance in network auto-selection mode (5G/4G/3G/2G).

Note-

- “-“All YouTube test were failed.

Old Bus Stand				
Parameters	Service Provider			
	Auto-selection mode (5G/4G/3G/2G)			
	AIRTEL	BSNL	RJIL	VIL
Download Throughput Average (Mbits/s)	276.74	5.28	164.81	18.14

Download Session Setup Success Rate %	100.00	100.00	100.00	100.00
Upload Throughput Average (Mbits/s)	46.22	2.11	14.36	4.43
Upload Session Setup Success Rate %	100.00	100.00	100.00	100.00
Web Browsing Delay (Second)	0.99	1.46	1.01	1.60
Youtube Initial Buffer Delay (Second)	0.59	2.88	0.53	0.78
Latency (ms)-50th Percentile	21.20	29.23	17.88	34.80
Jitter (ms)	10.87	6.92	8.62	2.18
Packet Loss Rate%	0.10	1.40	0.00	0.50

Table-32: Summary of Data performance in network auto-selection mode (5G/4G/3G/2G).

Shimla Railway Station				
Parameters	Service Provider			
	Auto-selection mode (5G/4G/3G/2G)			
	AIRTEL	BSNL	RJIL	VIL
Download Throughput Average (Mbits/s)	27.53	2.89	0.13	0.30
Download Session Setup Success Rate %	100.00	100.00	100.00	80.00
Upload Throughput Average (Mbits/s)	1.58	1.24	1.49	1.43
Upload Session Setup Success Rate %	100.00	80.00	100.00	60.00
Web Browsing Delay (Second)	7.36	3.57	7.53	8.07
Youtube Initial Buffer Delay (Second)	-	9.32	-	-
Latency (ms)-50th Percentile	28.70	30.38	45.85	697.25
Jitter (ms)	41.64	30.67	76.61	576.27
Packet Loss Rate%	6.10	4.80	12.60	98.10

Table-33: Summary of Data performance in network auto-selection mode (5G/4G/3G/2G).

Note-

- “-“All YouTube test were failed.

4.3.5 Data performance (5G Only & 4G Only Download & Upload Speed)

Overall Data Performance					
Parameters		Service Provider			
		AIRTEL	BSNL	RJIL	VIL
5G	Download Throughput Average (Mbits/s)	224.11	-	194.12	-
	Upload Throughput Average (Mbits/s)	30.60	-	14.08	-
4G	Download Throughput Average (Mbits/s)	57.30	7.58	23.12	9.80
	Upload Throughput Average (Mbits/s)	19.04	3.05	6.31	3.12

Table-34: Overall Summary of 5G only & 4G only data download & upload speed.

Note- “-“Respective technology was not observed during the test.

HP Secretariat					
Parameters		Service Provider			
		AIRTEL	BSNL	RJIL	VIL
5G	Download Throughput Average (Mbits/s)	199.18	-	26.19	-
	Upload Throughput Average (Mbits/s)	3.06	-	2.02	-
4G	Download Throughput Average (Mbits/s)	20.54	10.88	2.30	11.38
	Upload Throughput Average (Mbits/s)	14.60	2.74	3.52	3.51

Table-35: Summary of data download & upload speed 5G only & 4G only.

Note- “-“Respective technology was not observed during the test.

Indian Institute of Advanced Studies					
Parameters		Service Provider			
		AIRTEL	BSNL	RJIL	VIL
5G	Download Throughput Average (Mbits/s)	31.86	-	1.55	-
	Upload Throughput Average (Mbits/s)	1.63	-	4.09	-

4G	Download Throughput Average (Mbits/s)	1.57	10.76	5.12	1.62
	Upload Throughput Average (Mbits/s)	1.07	7.22	1.08	1.17

Table-36: Summary of 5G only & 4G only data download & upload speed.

Note- “-”Respective technology was not observed during the test.

Jakhu Temple					
Parameters		Service Provider			
		AIRTEL	BSNL	RJIL	VIL
5G	Download Throughput Average (Mbits/s)	-	-	30.31	-
	Upload Throughput Average (Mbits/s)	-	-	1.71	-
4G	Download Throughput Average (Mbits/s)	54.73	4.31	2.79	7.15
	Upload Throughput Average (Mbits/s)	25.39	2.51	1.31	1.23

Table-37: Summary of 5G only & 4G only data download & upload speed.

Note- “-”Respective technology was not observed during the test.

New ISBT					
Parameters		Service Provider			
		AIRTEL	BSNL	RJIL	VIL
5G	Download Throughput Average (Mbits/s)	469.89	-	908.13	-
	Upload Throughput Average (Mbits/s)	88.93	-	60.82	-
4G	Download Throughput Average (Mbits/s)	135.45	5.52	85.44	26.67
	Upload Throughput Average (Mbits/s)	13.51	1.70	24.28	8.09

Table-38: Summary of 5G only & 4G only data download & upload speed.

Note- “-”Respective technology was not observed during the test.

Old Bus Stand					
Parameters		Service Provider			
		AIRTEL	BSNL	RJIL	VIL
5G	Download Throughput Average (Mbits/s)	276.74	-	164.81	-
	Upload Throughput Average (Mbits/s)	46.22	-	14.36	-
4G	Download Throughput Average (Mbits/s)	41.14	5.02	36.38	10.03
	Upload Throughput Average (Mbits/s)	23.27	2.46	6.43	3.74

Table-39: Summary of 5G only & 4G only data download & upload speed.

Note- “-”Respective technology was not observed during the test.

Shimla Railway Station					
Parameters		Service Provider			
		AIRTEL	BSNL	RJIL	VIL
5G	Download Throughput Average (Mbits/s)	27.53	-	0.13	-
	Upload Throughput Average (Mbits/s)	1.58	-	1.49	-
4G	Download Throughput Average (Mbits/s)	90.35	7.17	6.71	1.95
	Upload Throughput Average (Mbits/s)	36.39	1.33	1.23	0.97

Table-40: Summary of 5G only & 4G only data download & upload speed.

Note- “-”Respective technology was not observed during the test.

4.4 Railways

Drive test has been conducted on 24th February 2025 covering one railway route. (refer table-1)

4.4.1 Drive test route

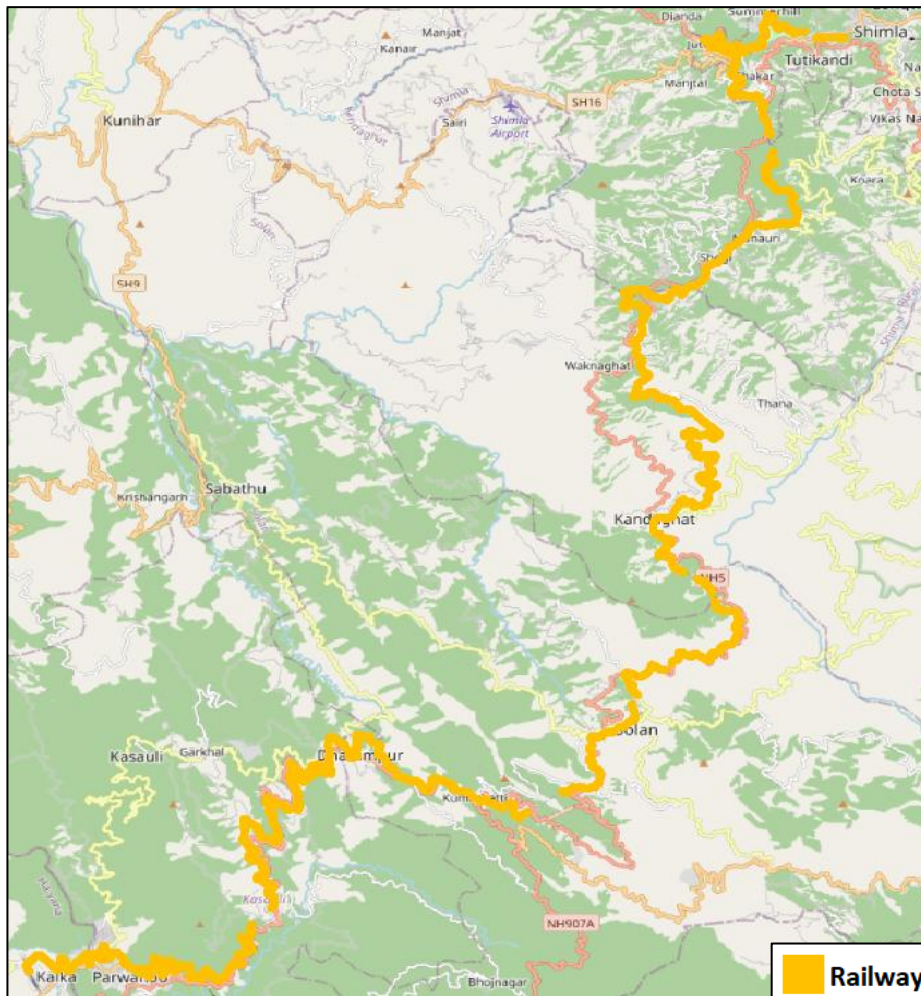


Figure-24: Drive test railway route

Note-

The patch is attributed to the presence of multiple tunnels along the railway route.

4.4.2 Route Covered

1. Kalka to Shimla.

4.4.3 Voice performance

(a) Voice Call Performance in auto network selection mode (5G/4G/3G/2G)

Parameters	Service Provider			
	Auto-selection mode (5G/4G/3G/2G)			
	AIRTEL	BSNL	RJIL	VIL
Call Attempts	100	118	101	134

Call Setup Success Rate %	94.00	83.05	95.05	70.15
Drop Call Rate %	3.19	29.59	6.25	10.64
Call Setup Time-Average (Second)	1.49	3.42	0.93	3.34
Handover Success Rate %	99.72	96.42	99.92	99.79

Table-41: Summary of voice call performance in network auto-selection mode

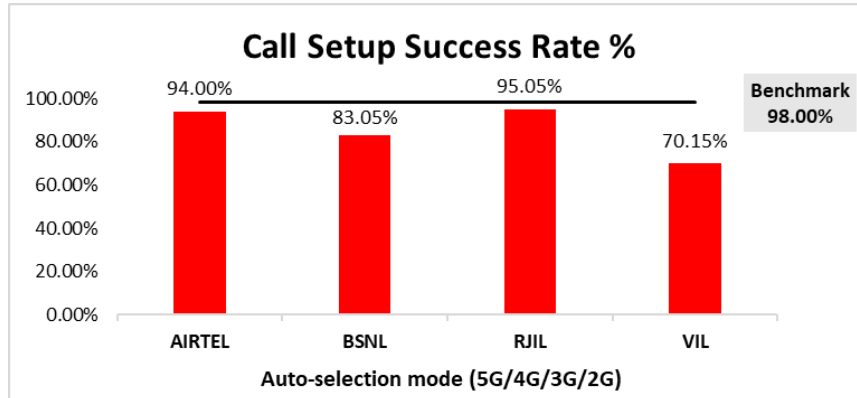


Figure-25: Performance for call setup success rate

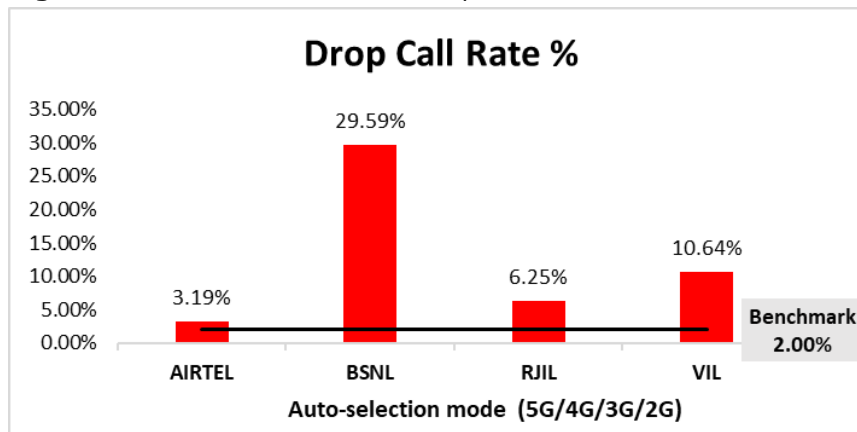


Figure-26: Performance for drop call rate

(b) Network Technology: This section represent time spent on various network technologies.

Technology	Service Provider			
	AIRTEL	BSNL	RJIL	VIL
5G	0.48%	NA	10.06%	NA
4G	96.78%	9.75%	88.50%	62.06%
3G	NA	10.50%	NA	0.00%
2G	0.99%	77.47%	NA	35.14%
Limited Service	1.75%	2.28%	1.43%	2.80%

Table-42: Time spent on technology during drive test

Note-NA- Service provider doesn't provide services in respective technology.



Figure-27: Serving technology plots auto-selection mode 5G/4G/3G/2G –AIRTEL

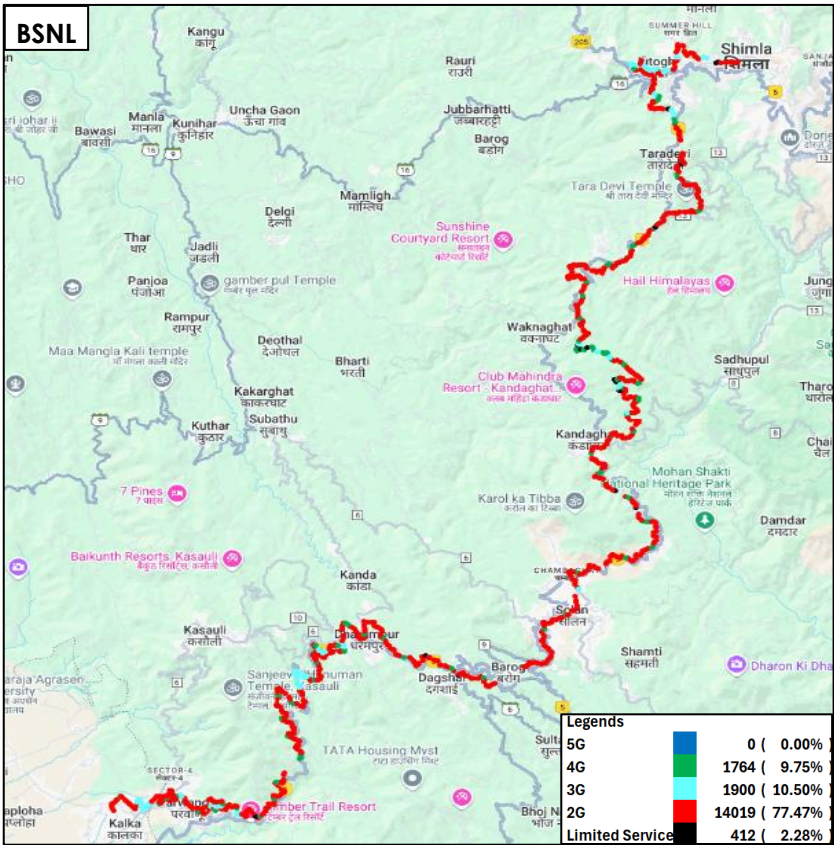


Figure-28: Serving technology plots auto-selection mode 5G/4G/3G/2G –BSNL.



Figure-29: Serving technology plots auto-selection mode 5G/4G/3G/2G –RJIL.

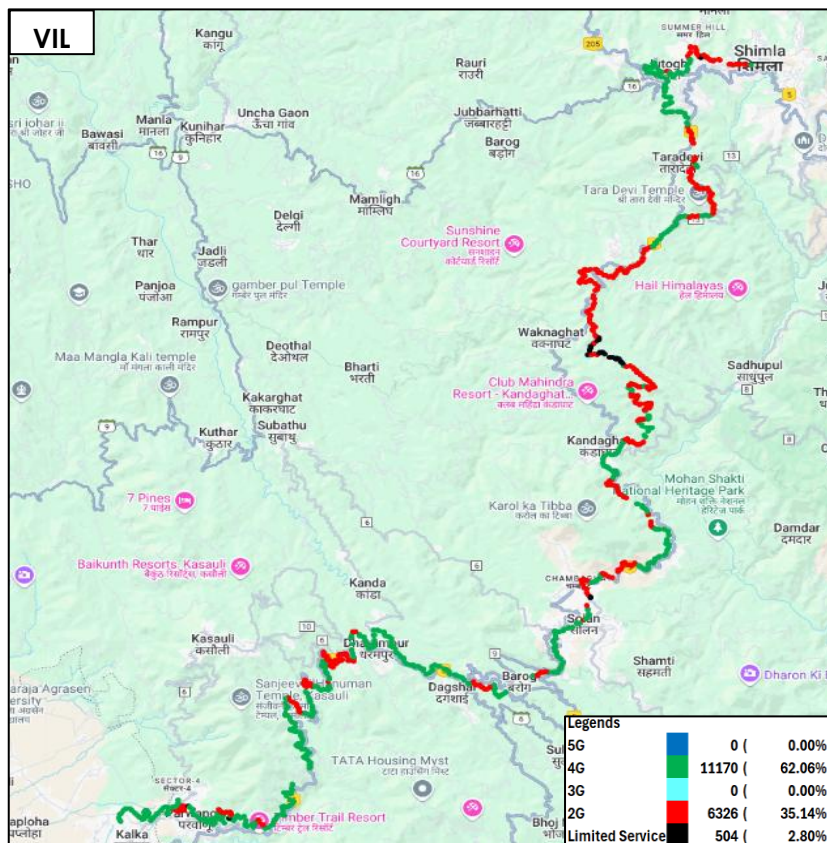


Figure-30: Serving technology plots auto-selection mode 5G/4G/3G/2G – VIL.

(c) Network Signal Strength distribution: The following chart provides signal strength distribution for auto-selection mode (5G/4G/3G/2G) (refer figure-41, 42, 43 & 44 for map view)

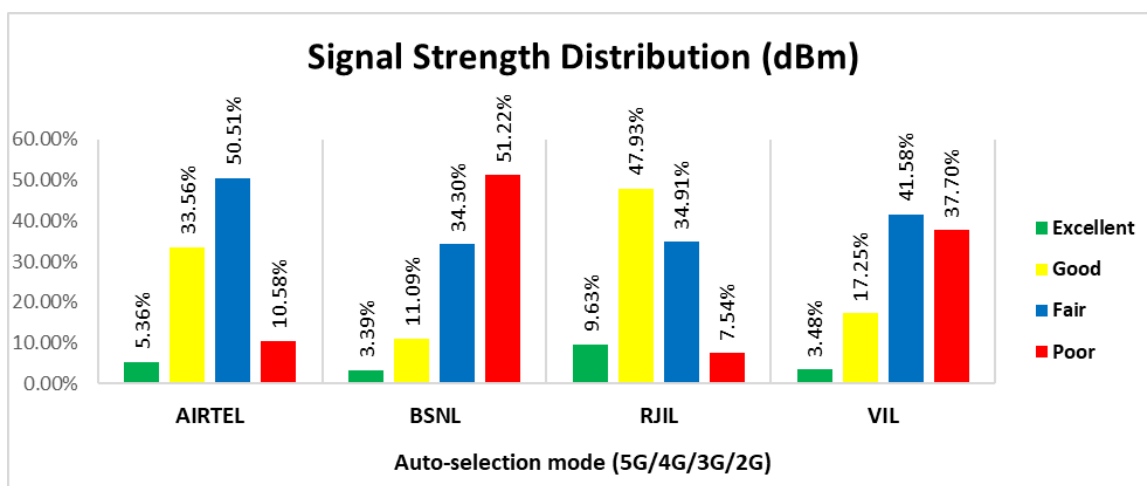


Figure-31: Signal strength distribution for auto-selection mode 5G/4G/3G/2G.

4.4.4 Data performance

a) Data Parameters (Auto-selection mode- 5G/4G/3G/2G)

Parameters		Service Provider			
		Auto-selection mode (5G/4G/3G/2G)			
		AIRTEL	BSNL	RJIL	VIL
Download Throughput (Mbits/s)	Average	57.60	5.91	90.84	12.34
	80th Percentile	90.44	8.04	180.05	19.11
	20th Percentile	5.61	0.88	4.55	3.79
Upload Throughput (Mbits/s)	Average	8.63	3.64	8.94	4.92
	80th Percentile	11.13	6.08	11.08	7.80
	20th Percentile	1.81	1.23	2.07	1.19
Latency (ms)	50th Percentile	23.38	32.10	23.90	37.55

Table-43: Summary of Data performance in network auto-selection mode (5G/4G/3G/2G).

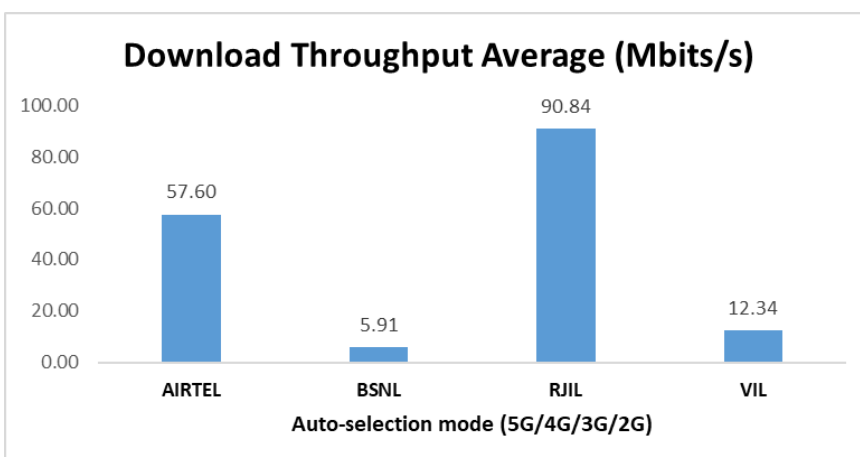


Figure-32: Download throughput

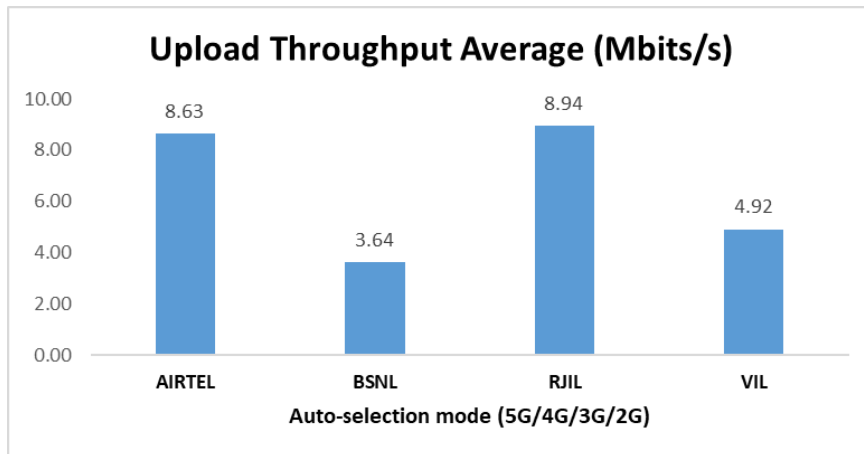


Figure-33: Upload throughput.

5. Voice & Data Key findings

5.1 Overall Voice

1. Call Setup Success Rate:

- a) Airtel, BSNL and VIL have 98.80%, 99.60% and 98.78% call setup success rate respectively in 3G/2G network mode. (refer table-3)
- b) Airtel, BSNL, RJIL and VIL have 98.55%, 93.79%, 98.57% and 90.93% call setup success rate respectively in Auto-selection mode (5G/4G/3G/2G). (refer table-5)
- c) Airtel, BSNL and VIL have 100% call setup success rate while calling on peer service provider's network, while RJIL have block call rate for inter-operator calls. (refer table-9)

2. Call Setup Time:

- a) Airtel, BSNL and VIL call setup time is 3.47, 2.88 & 5.36 seconds respectively in 3G/2G network mode. (refer table-3)
- b) Airtel, BSNL, RJIL & VIL call setup time is 1.36, 3.65, 0.86 & 2.45 seconds respectively in Auto-selection mode (5G/4G/3G/2G). (refer table-5)

3. Drop Call Rate:

- a) Airtel, BSNL and VIL drop call rate 0.81%, 7.23% & 0.82% respectively in 3G/2G network mode. (refer table-3)
- b) Airtel, BSNL, RJIL and VIL drop call rate 0.73%, 11.27% 1.69% & 2.43% respectively in Auto-selection mode (5G/4G/3G/2G). (refer table-5)

- 4. **Call Silence/Mute Rate:** In packet switched network (4G/5G), VIL, RJIL and Airtel have 2.75%, 0.42% & 0.41% silence call rate respectively. Further VIL has higher RTP packet loss rate in downlink (2.61%) compared to Airtel (1.64%) and RJIL (0.74%). In uplink the RTP packet loss rate is higher for VIL (2.66%) compared to Airtel (1.31%) and RJIL (0.57%). (refer table-6)

5.2 Overall Data

1. Data download and upload performance (Overall i.e. LSA) :

- a) Airtel, BSNL, RJIL and VIL average download speeds are 128.12 Mbps, 6.22 Mbps, 165.62 Mbps & 12.56 Mbps respectively. (refer table-11)
- b) Airtel, BSNL, RJIL and VIL average upload speeds are 16.79 Mbps, 3.00 Mbps, 17.62 Mbps & 4.51 Mbps respectively. (refer table-11)

2. Data download and upload performance (static i.e. while stationary):

- a) Airtel, BSNL, RJIL and VIL average download speeds are 175.97 Mbps, 7.27 Mbps, 187.86 Mbps & 12.17 Mbps respectively. (refer table-27)
- b) Airtel, BSNL, RJIL and VIL average upload speeds are 25.58 Mbps, 2.33 Mbps, 14.08 Mbps & 3.71 Mbps respectively. (refer table-27)

3. Data session setup success rate (static i.e. while stationary):

- a) Airtel, BSNL, RJIL and VIL have 100.00%, 96.67%, 100.00% and 76.67% download session setup success rate respectively. (refer table-27)
- b) Airtel, BSNL, RJIL and VIL have 100.00%, 93.33%, 100.00% and 80.00% upload session setup success rate respectively. (refer table-27)

5.3 Operator wise Key Findings

1. Airtel:

Voice

- 98.80% call setup success rate and 0.81% drop call rate have been observed for 3G/2G network mode respectively for LSA & City Drive. Performance is well within the benchmark of 98.00% & 2.00% respectively. (refer table-3 & 13)
- 98.55% call setup success rate and 0.73% drop call rate have been observed for auto-selection mode (5G/4G/3G/2G) respectively for LSA. Performance is well within the benchmark of 98.00% & 2.00% respectively. (refer table-5)
- 100.00% call setup success rate and 0.00% drop call rate have been observed for auto-selection mode (5G/4G/3G/2G) respectively for City Drive. Performance is well within the benchmark of 98.00% & 2.00% respectively. (refer table-15)
- 100.00% call setup success rate and 0.00% drop call rate have been observed for auto-selection mode (5G/4G/3G/2G) respectively for all hotspot locations. Performance is well within the benchmark of 98.00% & 2.00% respectively. (refer table-20)
- 94.00% call setup success rate and 3.19% drop call rate have been observed for auto-selection mode (5G/4G/3G/2G) respectively for railway route. Performance is not within the benchmark of 98.00% & 2.00% respectively. (refer table-41)

Data

- Airtel has average download throughput of 128.12 Mbps and average upload throughput of 16.79 Mbps across measured routes for LSA. (refer table-11)
- Airtel has average download throughput of 167.55 Mbps and average upload throughput of 21.09 Mbps across the measured routes during the city drive. (refer table -19)
- Indian institute of Advance Studies, Jakhu Temple and Shimla Railway Station have less download speed (less than 100 Mbps) out of total 6 Hotspots for auto-selection mode (5G/4G/3G/2G). (refer table-29, 30 and 33)
- HP Secretariat, Indian Institute of Advance Studies, Jakhu Temple and Shimla Railway Station have less upload speed (less than 20 Mbps) out of total 6 Hotspots for auto-selection mode (5G/4G/3G/2G). (refer table-28, 29, 30 and 33)

- Airtel has average download throughput of 57.60 Mbps and average upload throughput of 8.63 Mbps across the measured routes during the railway drive. (refer table-43)

2. BSNL:

Voice

- 99.60% call setup success rate and 7.23% drop call rate have been observed in 3G/2G network mode for LSA & city drive. Performance is not meeting benchmark of 2.00% for drop call rate. (refer table-3 & 13)
- 93.79% call setup success rate and 11.27% drop call rate have been observed in auto-selection mode (5G/4G/3G/2G). Performance is not meeting the benchmark of 98.00% & 2.00% respectively for LSA. (refer table-5)
- 97.28% call setup success rate and 6.40% drop call rate have been observed in auto-selection mode (5G/4G/3G/2G) for city drive. Performance is not meeting the benchmark of 98.00% & 2.00%. (refer table-15)
- 100.00% call setup success rate and 1.67% drop call rate have been observed in auto-selection mode (5G/4G/3G/2G) for overall hotspot locations. Performance is meeting benchmark of 98.00% & 2.00% respectively. (refer table-20)
- 83.05% call setup success rate and 29.59% drop call rate have been observed for auto-selection mode (5G/4G/3G/2G) for railway route. Performance is not meeting benchmark of 98.00% & 2.00% respectively. (refer table-41)

Data

- BSNL has 6.22 Mbps average download throughput & 3.00 Mbps average upload throughput across measured routes for LSA. (refer table-11)
- BSNL has 6.28 Mbps average download throughput & 2.67 Mbps average upload throughput across measured routes for city drive. (refer table-19)
- HP Secretariat, Jakhu Temple, New ISBT, Old Bus Stand and Shimla Railway Station have less download speed (less than 10 Mbps) out of total 6 Hotspots for auto-selection mode (5G/4G/3G/2G). (refer table-28, 30, 31, 32 and 33)
- HP Secretariat, Jakhu Temple, New ISBT and Shimla Railway Station have less upload speed (less than 2 Mbps) out of total 6 Hotspots for auto-selection mode (5G/4G/3G/2G). (refer table-28, 30, 31 and 33)
- BSNL has average download throughput of 5.91 Mbps and average upload throughput of 3.64 Mbps across the measured routes during the railway drive. (refer table-43)

3. RJIL:

Voice

- 98.57% call setup success rate and 1.69% drop call rate have been observed for the auto-selection mode for LSA. Performance is well within the benchmark of 98.00% & 2.00% respectively. (refer table-5)
- 99.61% call setup success rate and 0.39% drop call rate have been observed in auto-selection mode (5G/4G/3G/2G) for city drive. Performance is well within the benchmark of 98.00% & 2.00% respectively. (refer table-15)
- 100.00% call setup success rate and 0.00% drop call rate have been observed in auto-selection mode (5G/4G/3G/2G) for overall hotspot locations. Performance is well within the benchmark of 98.00% & 2.00% respectively. (refer table-20)
- 95.05% call setup success rate and 6.25% drop call rate have been observed for auto-selection mode (5G/4G/3G/2G) for railway route. Performance is not meeting benchmark of 98.00% & 2.00% respectively. (refer table-41)

Data

- RJIL has 165.62 Mbps average download speed & 17.62 Mbps average upload speed across measured routes for LSA. (refer table-11)
- RJIL has 211.69 Mbps average download speed & 23.56 Mbps average upload speed across measured routes for city drive. (refer table-19)
- HP Secretariat, Indian Institute of Advance Studies, Jakhu Temple and Shimla Railway Station have less download speed (less than 100 Mbps) out of total 6 Hotspots for auto-selection mode (5G/4G/3G/2G). (refer table-28, 29, 30 and 33)
- HP Secretariat, Indian Institute of Advance Studies, Jakhu Temple, Old Bus Stand and Shimla Railway Station have less upload speed (less than 20 Mbps) out of total 6 Hotspots for auto-selection mode (5G/4G/3G/2G). (refer table-28, 29, 30, 32 and 33)
- RIL has average download throughput of 90.84 Mbps and average upload throughput of 8.94 Mbps across the measured routes during the railway drive. (refer table-43)

4. VIL:

Voice

- 98.78% call setup success rate and 0.82% drop call rate have been observed in 3G/2G network mode for LSA & city drive. Performance is well within the benchmark of 98.00% & 2.00% respectively. (refer table-3 & 13)

- 90.93% call setup success rate and 2.43% drop call rate have been observed for auto-selection mode (5G/4G/3G/2G) for LSA. Performance is not meeting the benchmark of 98.00% & 2.00% respectively. (refer table-5)
- 100.00% call setup success rate and 0.00% drop call rate have been observed for auto-selection mode (5G/4G/3G/2G) for city drive. Performance is well within the benchmark of 98.00% & 2.00% respectively. (refer table-15)
- 98.33% call setup success rate and 0.00% drop call rate have been observed for auto-selection mode (5G/4G/3G/2G) for overall hotspot locations. Performance is well within the benchmark of 98.00% & 2.00% respectively. (refer table-20)
- 70.15% call setup success rate and 10.64% drop call rate have been observed for auto-selection mode (5G/4G/3G/2G) for railway route. Performance is not meeting the benchmark of 98.00% & 2.00% respectively. (refer table-41)

Data

- VIL has 12.56 Mbps average download speed & 4.51 Mbps average upload speed across measured routes for LSA. (refer table-11)
- VIL has 12.70 Mbps average download speed & 4.38 Mbps average upload speed across measured routes for city drive. (refer table-19)
- HP Secretariat, Indian Institute of Advance Studies, Jakhu Temple and Shimla Railway Station have less download speed (less than 10 Mbps) out of total 6 Hotspots for auto-selection mode (5G/4G/3G/2G). (refer table-28, 29, 30 and 33)
- HP Secretariat, Indian Institute of Advance Studies and Shimla Railway Station have less upload speed (less than 2 Mbps) out of total 6 Hotspots for auto-selection mode (5G/4G/3G/2G). (refer table-28, 29 and 33)
- VIL has average download throughput of 12.34 Mbps and average upload throughput of 4.92 Mbps across the measured routes during the railway drive. (refer table-43)

6. Annexure

6.1 Route wise coverage map

6.1.1 City

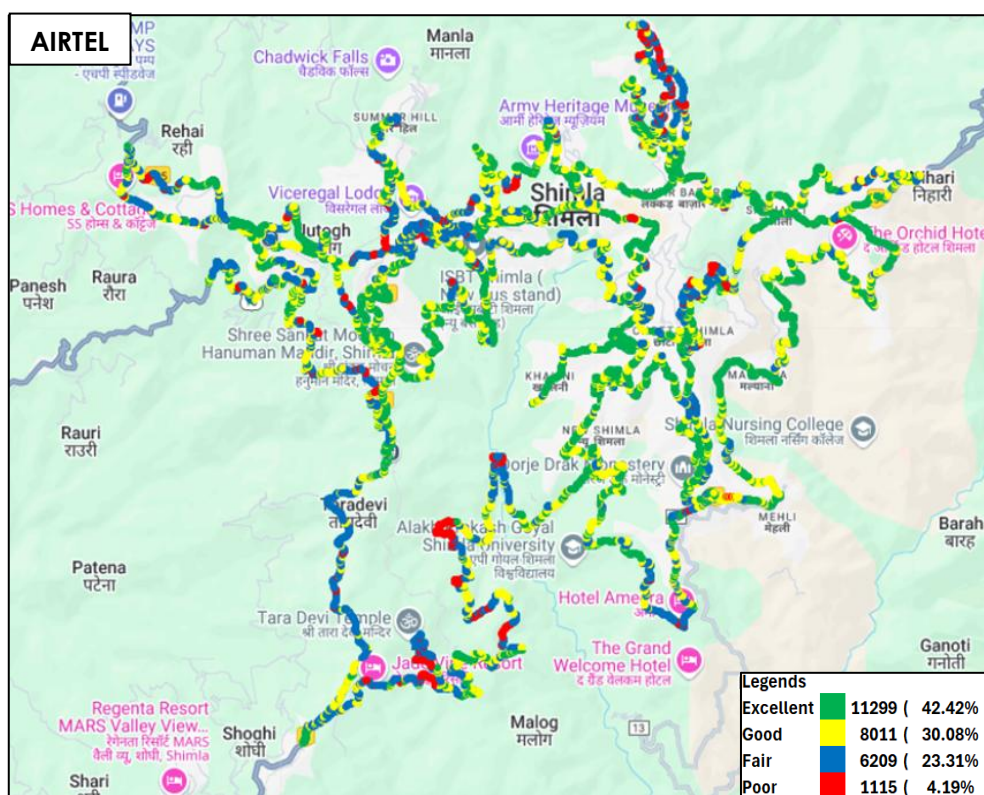


Figure-34: Signal strength 3G/2G network mode – AIRTEL.

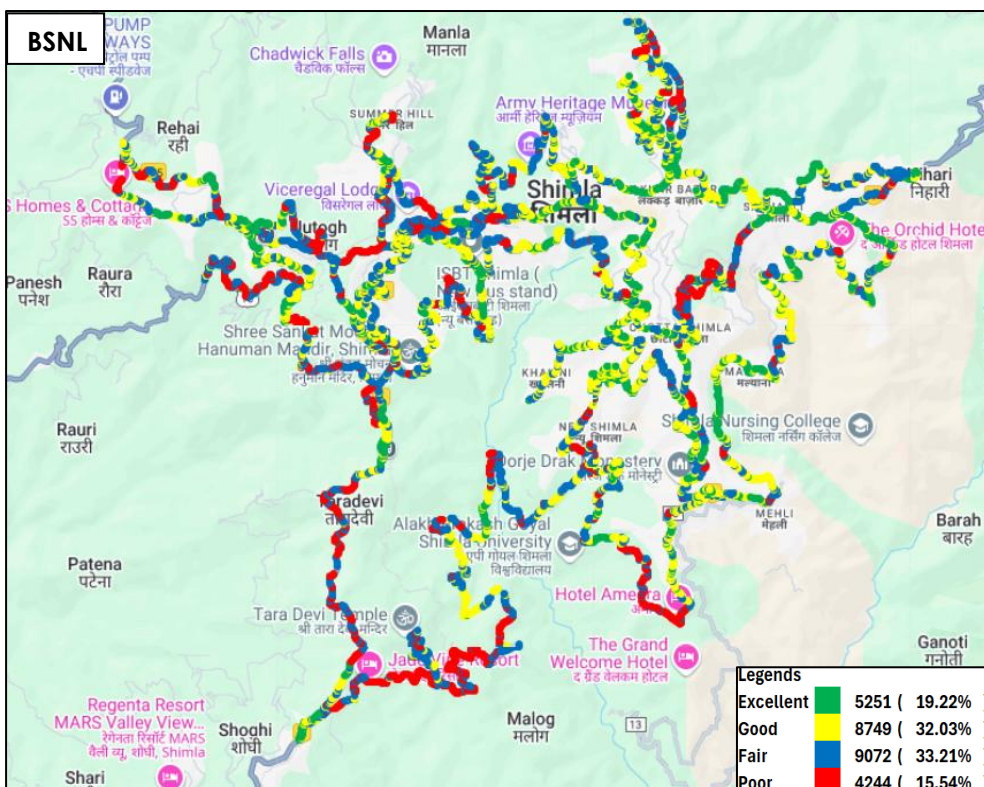


Figure-35: Signal strength 3G/2G network mode – BSNL.

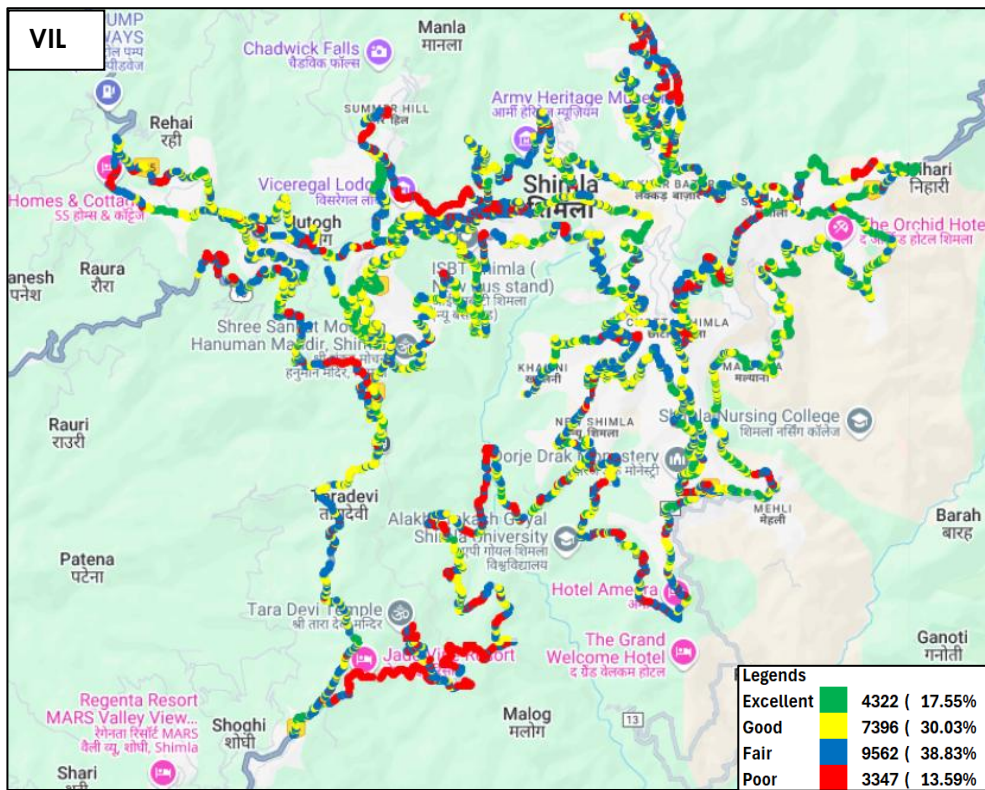


Figure-36: Signal strength 3G/2G network mode – VIL.

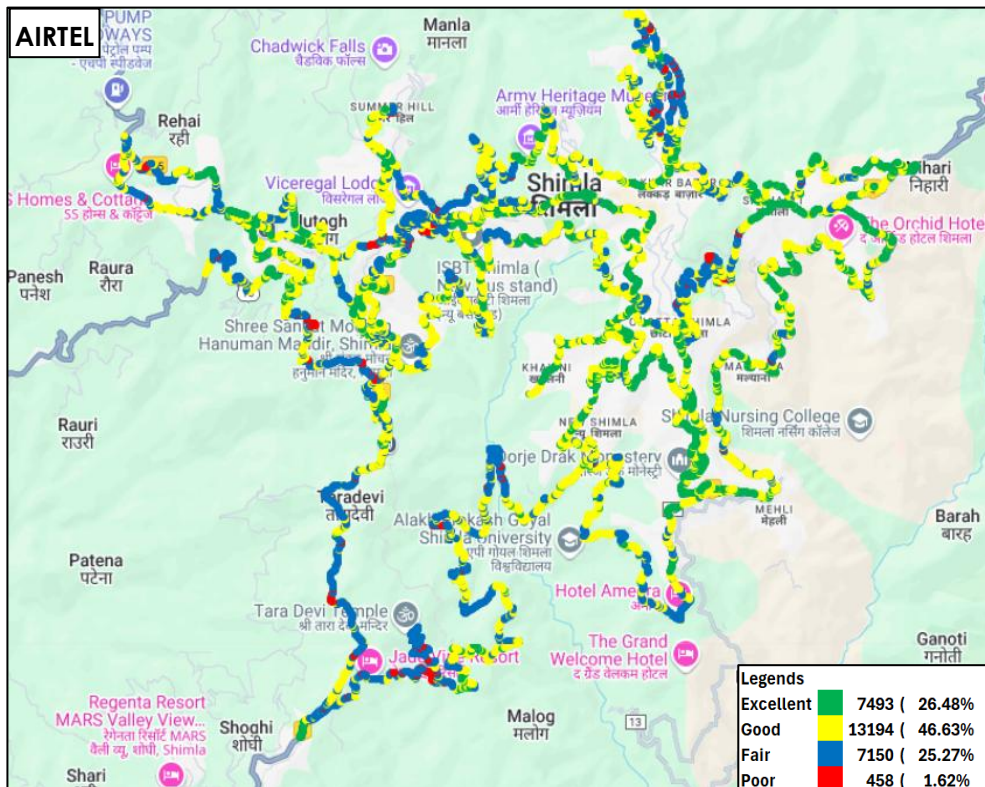


Figure-37: Signal strength auto-selection mode 5G/4G/3G/2G – AIRTEL.

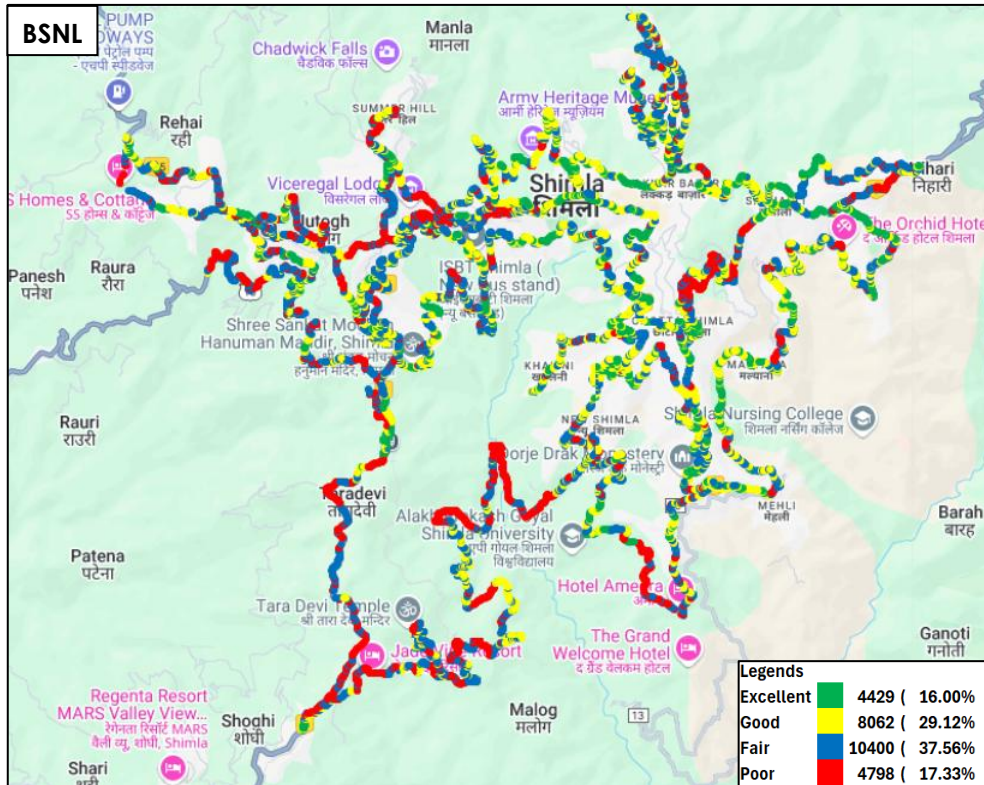


Figure-38: Signal strength auto-selection mode 5G/4G/3G/2G – BSNL.

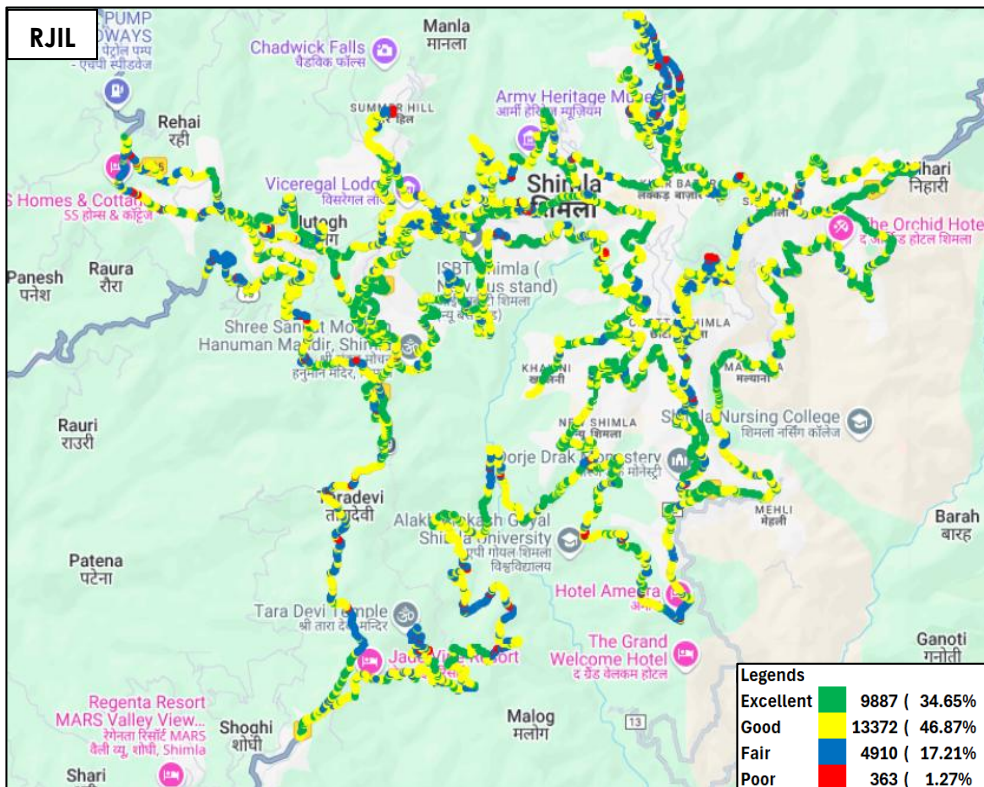


Figure-39: Signal strength auto-selection mode 5G/4G/3G/2G – RJIL.

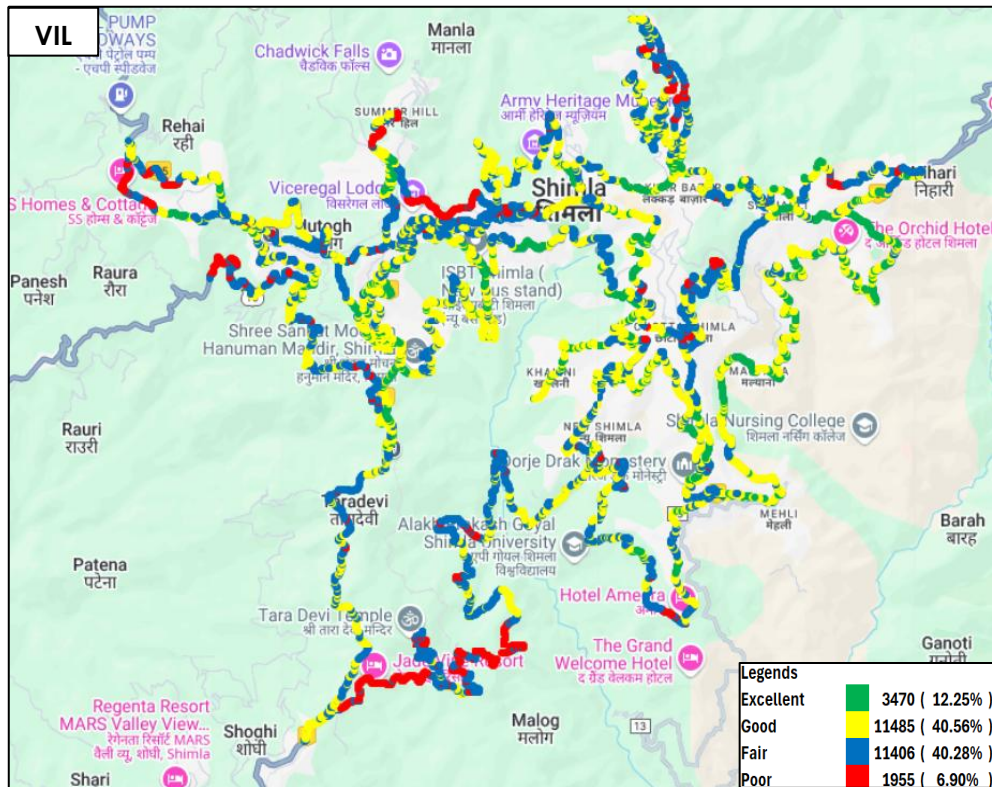


Figure-40: Signal strength auto-selection mode 5G/4G/3G/2G – VIL.

6.1.2 Railway Route

i) Kalka to Shimla

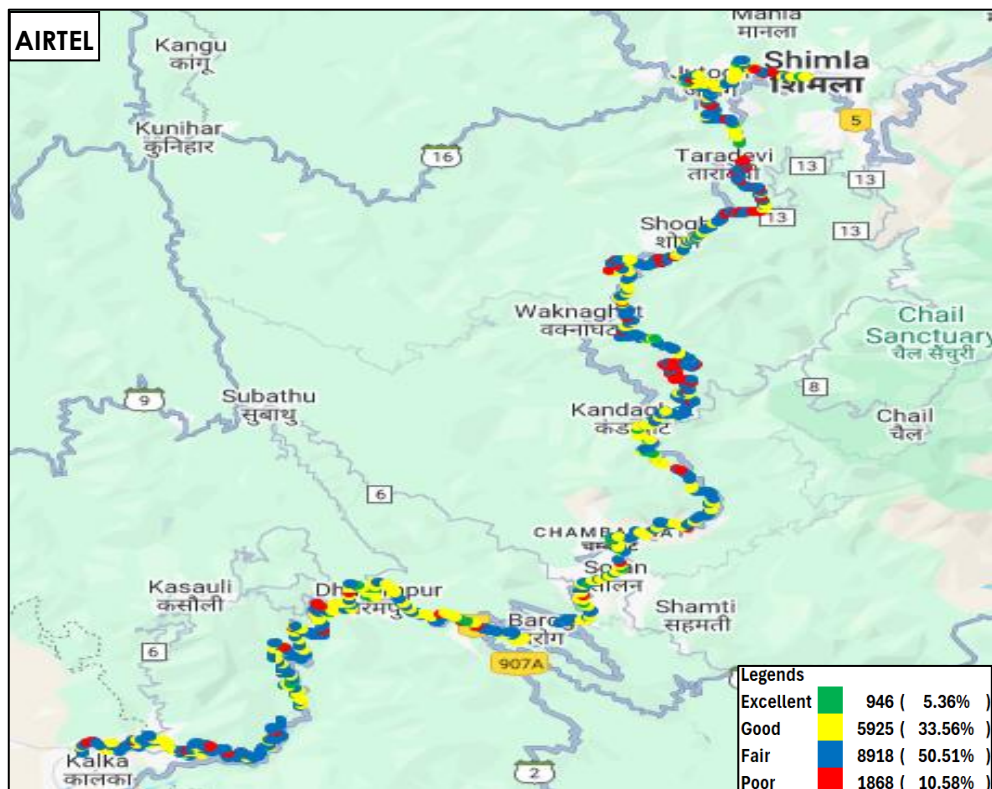


Figure-41: Signal strength auto-selection mode 5G/4G/3G/2G – AIRTEL.

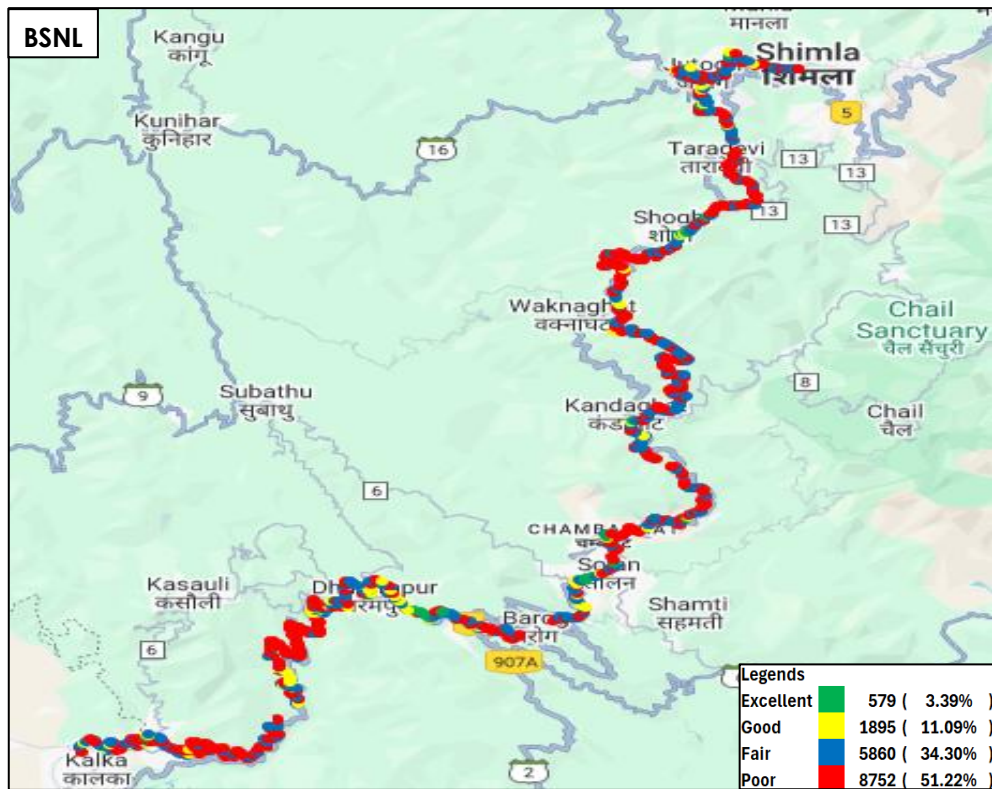


Figure-42: Signal strength auto-selection mode 5G/4G/3G/2G – BSNL.

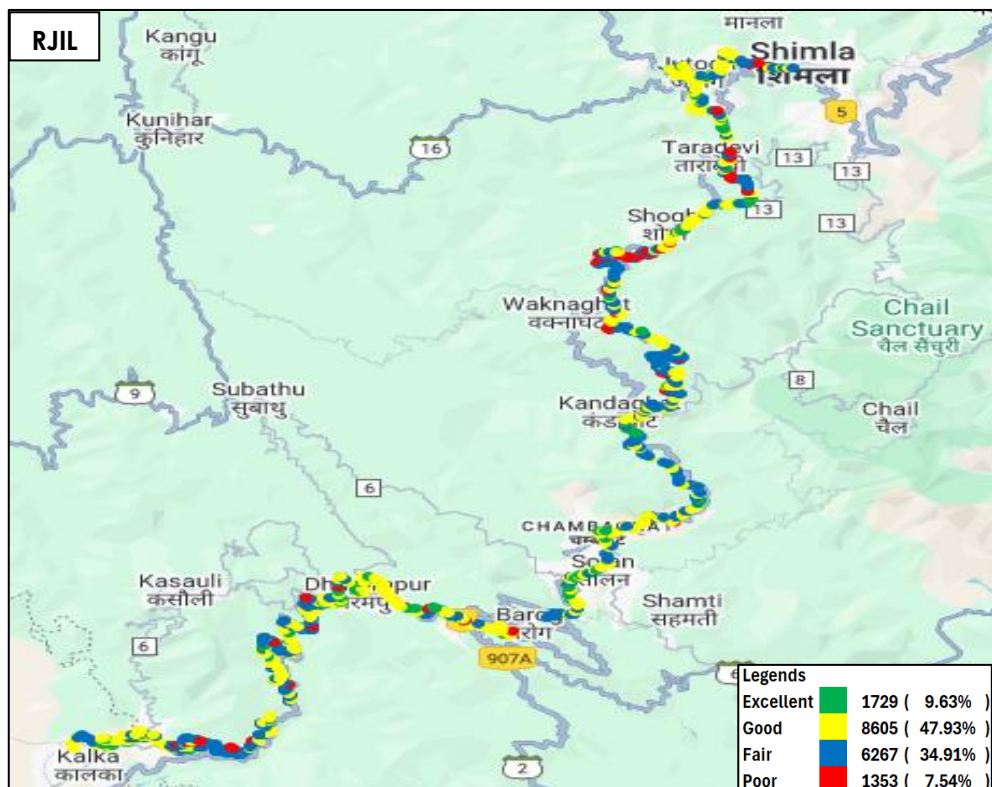


Figure-43: Signal strength auto-selection mode 5G/4G/3G/2G – RJIL.

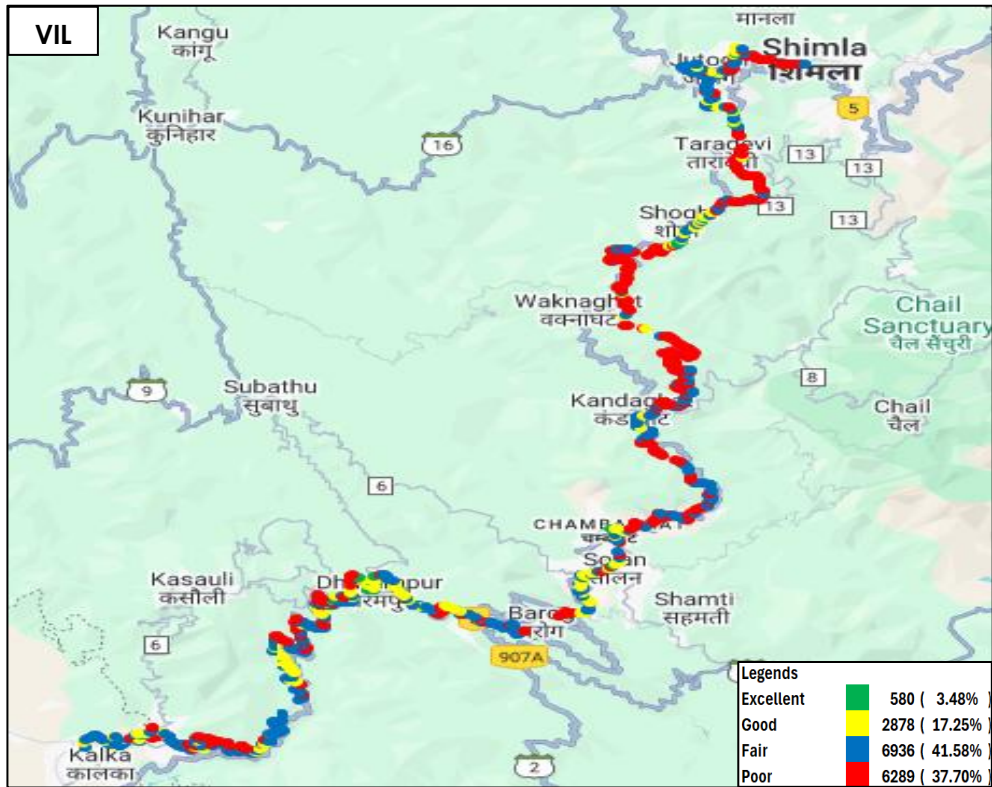


Figure-44: Signal strength auto-selection mode 5G/4G/3G/2G – VIL.

7. Appendix

The details of the setup used for conducting the drive test and the network or performance parameters captured under different conditions may be seen at Appendix-I. The calculation method of each QoS parameter is given in Appendix-II of the report. The summary of key equipment used in technical setup is as under

- **Device-1:** OnePlus Nord CE3 for 3G/2G CAT-15 Smartphone.
- **Device-2:** Samsung Galaxy S23 for 5G/4G/3G/2G CAT-20 Smartphone
- **Drive test Software:** Azenqos Engineering capable Applications to capture actual user experience.

7.1 Appendix-I

7.1.1 Drive test setup

Voice Call		
Call details	Technology	Detail
Call Setup Timeout	<ul style="list-style-type: none"> • 3G/2G auto mode- switch Call • 5G/4G/3G/2G auto mode- switch Call • 5G/4G MOS Call 	30 Sec
Call Duration		90 Sec/180 Sec.
Wait/ Guard Time		15 Sec

Table-44: Voice test detail

Note-

- There is 15 sec wait time after locking and before starting first call in 3G/2G call.
- 10 calls to be made at each Hotspot location.
- Minimum 10 Calls to be made during the walk test. Call count will be increased based on walk test distance.
- Speech quality (MOS) has been measured only in city drive & highway by making Mobile to Mobile call.
- 180 Sec calls were made only in highway & railway route drive.
- 5G/4G/3G/2G auto mode MOS call were made in BSNL as BSNL don't have VoLTE & VoNR network availability.

Data Test		
Test Type	Technology	Detail
HTTP/FTP Download	5G/4G/3G/2G Auto Mode	500 MB File- 30 Sec Timeout, (Multithread 3- TCP Connection at a time)
HTTP/FTP Upload		250 MB File- 30 Sec Timeout, (Multithread 3- TCP Connection at a time)
YouTube Streaming		20 Sec Video & 25 sec Timeout (Only at Hotspot)

Web Browsing		3 popular websites (www.google.co.in , www.irctc.co.in , www.sbi.co.in) 20 sec timeout (only at Hotspot)
Latency		25 count- Dynamic 1000 count- Hotspot Payload- 42 bytes in all drive

Table-45: Data test detail

Note-

- 5 Data iteration to be done at each hotspot location.
- Minimum 5 iteration to be made during the walk test. Iteration count will be increased based on walk test distance.
- Ping test to be performed only once at hotspot location.
- Youtube & Web browsing test to be performed at static location only.
- All values are taken up to two decimal places with round off.
- Download and upload testing has been done on FTP server for Airtel, BSNL & RJIL. (Airtel, BSNL & RJIL not provided HTTP server)
- VIL download and upload testing is done on HTTP Server.
- Download & Upload test performed at hotspot in 4G/3G/2G auto-selection also.

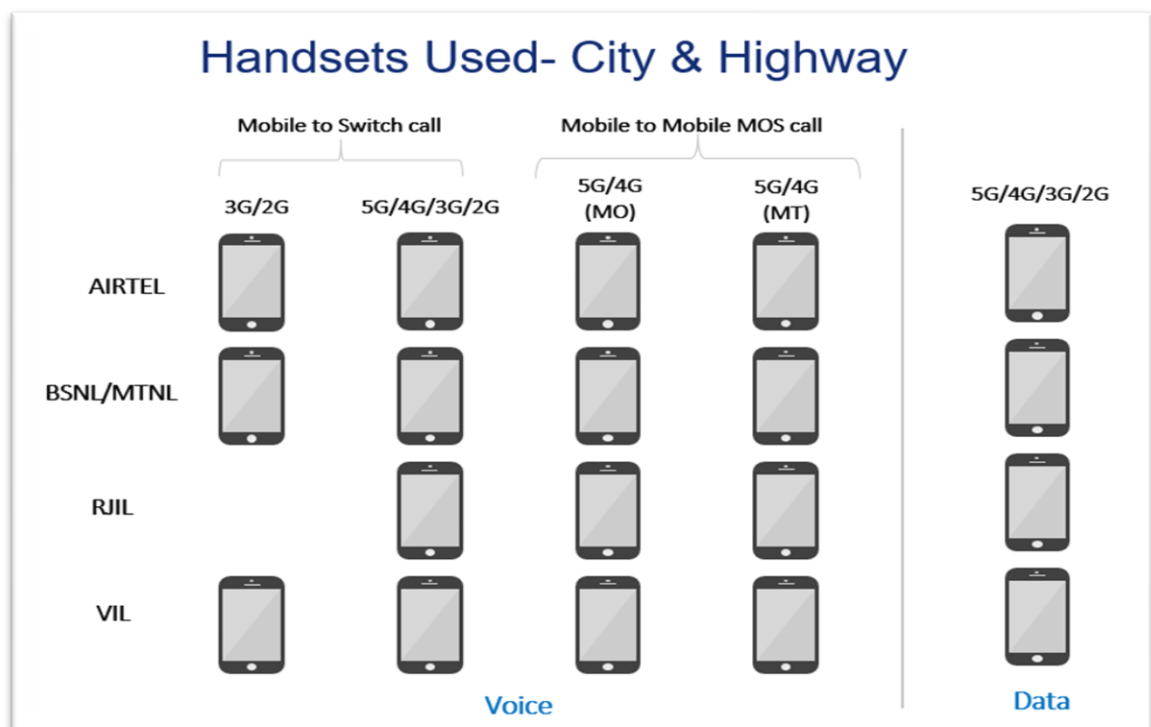


Figure-45: Number of handsets used in city & highway drive

MO: Mobile originating

MT: Mobile terminating

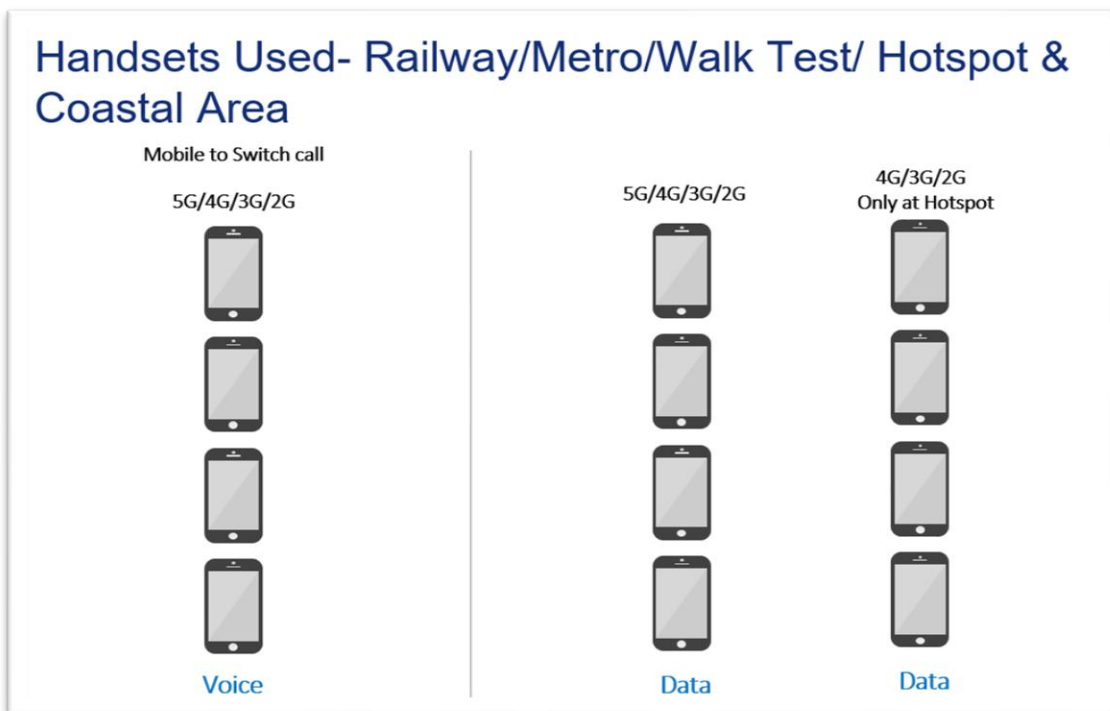


Figure-46: Number of handsets used in railway/metro/walktest/hotspot & coastal area

7.1.2 Drive test Methodology

(a) Dynamic voice testing (on the move)

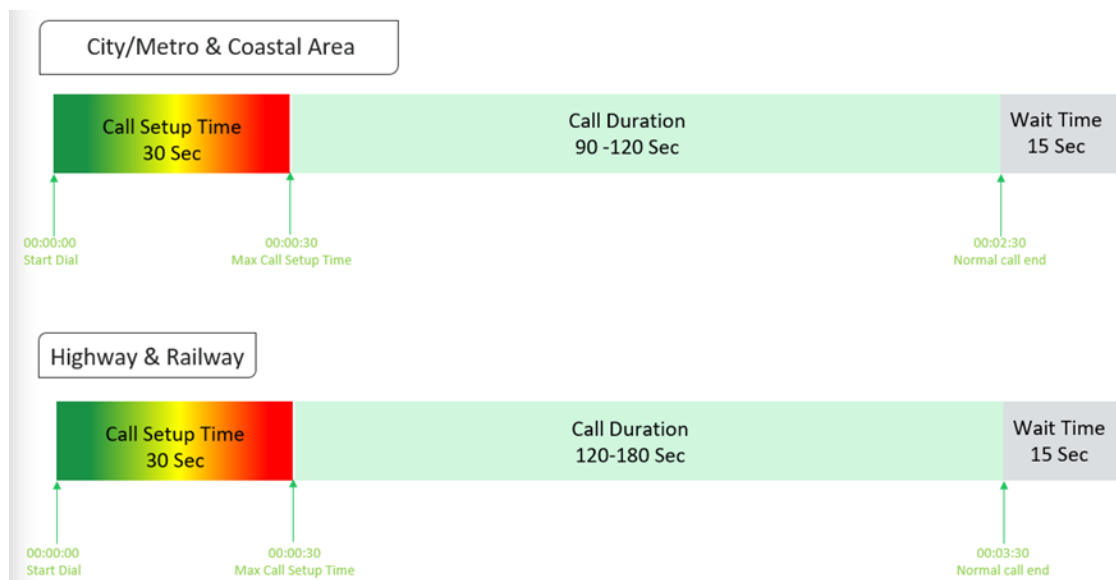


Figure-47: Voice test script for city/railway/metro/highway & coastal area

- 15 sec wait time is applied after locking Radio Access Technology (RAT) to 3G/2G and before starting first call in 3G/2G call.
- Speech quality (MOS) will be measured only City & Highway drive by making Mobile to Mobile calls.

(b) Hotspot voice testing



Figure-48: Voice test script for walktest/hotspot

- 10 calls to be made at each Hotspot location.
- Minimum 10 Calls to be made during the walk test. Call count will be increased based on walk test distance.

(c) Dynamic Data (internet) test

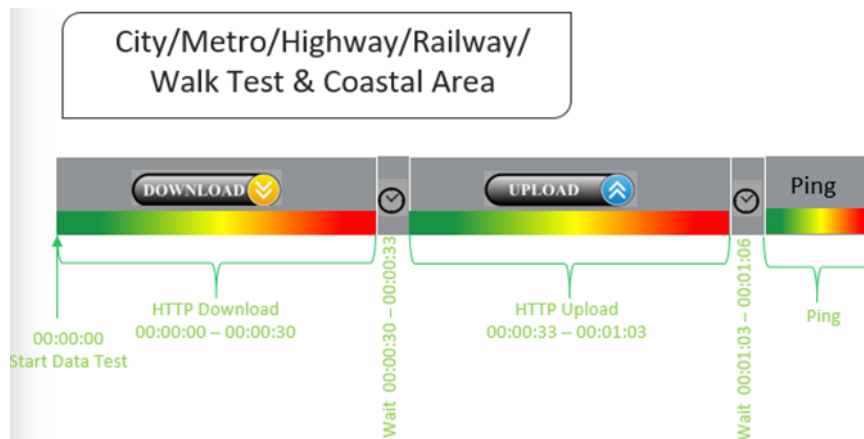


Figure-49: Data test script used in city/metro/railway/highway/walk test & coastal area

(d) Static Data(internet) testing

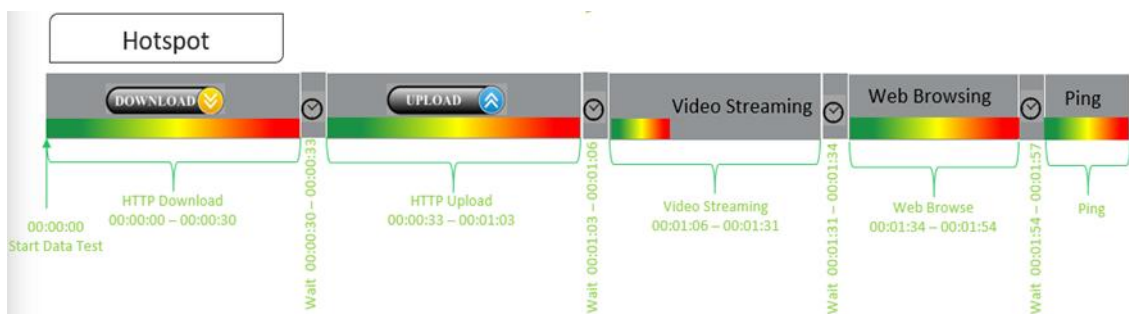


Figure-50: Data test script used at hotspot

- 5 Data iteration done at each hotspot location.
- Min. 5 iteration made during the walk test.
- Web browsing duration mentioned above is for one web site only.
- Only 1 ping iteration (with 1000 Count) done at hotspot location.
- Download & Upload test performed at hotspot in 4G/3G/2G auto-selection also.

7.2 Appendix-II

7.2.1 Network Performance Parameters for Voice calls

Parameter Name	Definition
Call Setup Success Rate	<p>(i) Call Setup Success Rate is defined as the ratio of Established Calls to Call Attempts. 'Established Calls' mean the following events have happened in call setup:</p> <ul style="list-style-type: none"> (a) Call attempt is made (b) The signaling channel is allocated (c) The call is routed to the outwards path of the terminating network (d) An alert signal is received by caller in the form of ring back tone, busy tone, or an announcement. <p>CSSR = (Total Call Established/ Total Call Attempt) *100</p> <p>As per QoS Regulation 2024 benchmark value is >=98%</p>
Drop Call Rate	<p>Drop call represents the service provider network's ability to maintain a call once it has been successfully established. This parameter shall include both incoming calls and outgoing calls which, once they have been established and have an assigned traffic channel/ bearer, are dropped, or interrupted before their normal completion by the user, the cause of the early termination being within the service provider's network</p> <p>Drop Call Rate = (Total Drop Call/Total Call Established) *100</p> <p>As per QoS Regulation 2024 benchmark value is <=2%</p>
Call Setup Time	<p>Time taken from call initiate to call alerting/ringing.</p> <p>Call Setup Time = T2- T1</p> <p>T2- Ringing (VoLTE/VoNR) & Alerting (for WCDMA & GSM), T1- Invite (VoLTE/VoNR) & CM Service Request (for WCDMA & GSM)</p>
Voice Quality (MOS)	<p>Voice quality in mobile networks is measured with algorithms based on ITU-T P.863 (POLQA). The grading for Voice quality has been given as:</p> <p>Excellent: MOS ≥ 4 and < 5 Good : MOS ≥ 3 and < 4 Fair : MOS ≥ 2 and < 3 Poor : MOS ≥ 1 and < 2</p>
Handover Success Rate	<p>Handover Success Rate = Count of successful handovers (All Technology Handover combined) / Total count of Handover Attempt (All Technology Handover combined) *100</p> <p>Handover type which are considered- 2G Inter & Intra cell, 3G Soft & IRAT, 4G Inter & Intra frequency & SRVCC, 5G Inter & Intra frequency & 5G to 4G handovers.</p>
Silence Call -	<p>A call which has ≥ 4 sec continuous RTP gap is considered as a Silence Call.</p> <p>Silence call rate = (count of silence call / Total calls established) *100</p> <p>If a call observes multiple silence count ≥ 4 sec in a particular established call it has been taken as one silent event.</p>

Jitter	<p>The inter arrival jitter is the difference in the relative transit time for two packets. The relative transit time is the difference between a packet's Real-time Transport Protocol (RTP) timestamp and the receiver's clock at the time of arrival, measured in the same units. If S_i is the RTP timestamp from packet i, and R_i is the time of arrival in RTP timestamps units for packet i, then for two packets i and j the inter-arrival jitter D can be expressed as:</p> $D(i,j) = (R_j - R_i) - (S_j - S_i)$ <p>The interarrival jitter is calculated continuously as each data packet i is received from source $SSRC_n$, using this difference D for that packet and the previous packet $i-1$ in order of arrival (not necessarily in sequence), according to the formula</p> $J(i) = J(i-1) + (D(i-1,i) - J(i-1))/16 \text{ or } 8$																																		
Downlink Packet Drop Rate	<p>Number of RTP (Real-time Transport Protocol) Packets lost divided by total RTP packet received (against each source_SSRC and sequence number) at call originating handset.</p> <p>This KPI is calculated from MOS call for packet call only (VoNR/VoLTE)</p>																																		
Uplink Packet Drop Rate	<p>Number of RTP (Real-time Transport Protocol) Packets lost divided by total RTP packet received (against each source_SSRC and sequence number) at call terminating handset. This KPI is calculated from MOS call for packet call only (VoNR/VoLTE).</p>																																		
Signal Strength	<p>Signal strength is the signal power level received by the wireless user.</p> <table><tr><th rowspan="2">Parameter Name</th><th rowspan="2">Technology</th><th colspan="4">Signal Strength (dBm)</th></tr><tr><th>Excellent</th><th>Good</th><th>Fair</th><th>Poor</th></tr><tr><td>Rx Level</td><td>GSM</td><td>0 to ≥ -65</td><td><-65 to ≥ -75</td><td><-75 to ≥ -85</td><td><-85 to min</td></tr><tr><td>RSCP</td><td>WCDMA</td><td>0 to ≥ -70</td><td><-70 to ≥ -80</td><td><-80 to ≥ -90</td><td><-90 to min</td></tr><tr><td>RSRP</td><td>LTE</td><td>0 to ≥ -80</td><td><-80 to ≥ -95</td><td><-95 to ≥ -110</td><td><-110 to min</td></tr><tr><td>SS_RSRP</td><td>NR</td><td>0 to ≥ -80</td><td><-80 to ≥ -95</td><td><-95 to ≥ -110</td><td><-110 to min</td></tr></table>	Parameter Name	Technology	Signal Strength (dBm)				Excellent	Good	Fair	Poor	Rx Level	GSM	0 to ≥ -65	<-65 to ≥ -75	<-75 to ≥ -85	<-85 to min	RSCP	WCDMA	0 to ≥ -70	<-70 to ≥ -80	<-80 to ≥ -90	<-90 to min	RSRP	LTE	0 to ≥ -80	<-80 to ≥ -95	<-95 to ≥ -110	<-110 to min	SS_RSRP	NR	0 to ≥ -80	<-80 to ≥ -95	<-95 to ≥ -110	<-110 to min
Parameter Name	Technology			Signal Strength (dBm)																															
		Excellent	Good	Fair	Poor																														
Rx Level	GSM	0 to ≥ -65	<-65 to ≥ -75	<-75 to ≥ -85	<-85 to min																														
RSCP	WCDMA	0 to ≥ -70	<-70 to ≥ -80	<-80 to ≥ -90	<-90 to min																														
RSRP	LTE	0 to ≥ -80	<-80 to ≥ -95	<-95 to ≥ -110	<-110 to min																														
SS_RSRP	NR	0 to ≥ -80	<-80 to ≥ -95	<-95 to ≥ -110	<-110 to min																														

Table-46: Network performance parameter and definition voice

7.2.2 Network Performance Parameters Data tests

Parameter Name	Definition
Download Speed (Mbps)	<p>The download speed is defined as the data transmission rate that is achieved for downloading a test file from a test server to a test device.</p> <p>Download Speed = Total bytes transferred during download / Total time for transfer</p> <ul style="list-style-type: none"> 80th percentile (upper range) & 20th percentile (lower range) value has been calculated for download throughput in dynamic drive and Hotspot combine data
Upload Speed (Mbps)	<p>The upload speed is the data transmission rate that is achieved for uploading a test file from a test device to a test server.</p> <p>Upload Speed = Total bytes transferred during upload / Total time for transfer.</p> <ul style="list-style-type: none"> 80th percentile (upper range) & 20th percentile (lower range) value has been calculated for upload throughput in dynamic drive and Hotspot combine data.
Download Session Setup Success Rate	<p>(total download session established (successfully connected to server)/ total download session attempt) *100.</p> <p>This KPI has been calculated for Hotspot only.</p>

Upload Session Setup Success Rate	(total upload session established (successfully connected to server)/ total upload session attempt)*100. This KPI need to report for Hotspot only.
Web Page Download Time	<p>Web browsing test is used to measure performance in terms of opening a web/HTTP page.</p> <p>Time taken to open the web page successfully is considered as web browsing delay/web page download time.</p>
Video Streaming Delay	The Video streaming delay is time taken from start of video transfer to First video frame displayed in player.
Latency	<p>Latency is the time it takes for a small data set to be transmitted from a device to a server on the Internet and back to the same device again.</p> <p>The Latency is measured in milliseconds (ms).</p> <p>To calculate the one-way latency we just do half of the round-trip time. 50th percentile of one way latency has been reported.</p>
Jitter	<p>Measure of variation in time in arrival of packets from a source to destination</p> <p>The consideration of packet delay jitter is considered by standard deviation of Inter Packet Delay Variation. If IPDV is used. By standard deviation is meant the average of standard deviation of IPDV on DL</p> <p>$IPDV(i) = D(i) - D(i-1)$ then Stdvs of IPDV is considered as jitter.</p>
Packet Loss Rate	<p>Number of packets lost out of total packet transferred during test. Packet loss rate = (Total packet lost / Total packet sent) *100</p> <p>* Packet delay (using ping) >90 ms considered as packet loss and included in packet loss rate.</p> <p>* Packet loss rate is calculated based on ICMP</p> <p>* 90th percentile for Packet loss rate has been reported in overall Hotspot performance summary.</p>

Table-47: Network performance parameter and definition Data

Disclaimer: The observations presented above and, in the reports, represent the performance of the service providers on the area/route under test on the day/time of conducting the drive test and no inference whatsoever may be drawn regarding the quality of the telecom service by the service providers in the whole city/state/licensed service area.