

Operator Assisted Drive Test Report

South Tripura, Gomati and Dhalai Districts

February, 2025

(RO, Kolkata)

Key Performance Indicators (KPIs):

The following TSPs could not meet the KPIs benchmark as stated below—

AIRTEL- Rx Quality in 2G network.

BSNL- Drop Call Rate in 2G & 3G network, Block Call Rate in 2G & 3G network, Call Setup Success Rate in 2G & 3G network, Rx Quality in 2G & 3G (Ec/Io) network, Mobility HOSR(%) in 2G network.

RJIO- Rx Quality in 4G (SINR) network.

VIL- Rx Quality in 2G & 4G (SINR) network.

The Operator Assisted Drive Test has been carried out by Regional Office, Kolkata with the help of Service Providers in South Tripura, Gomati and Dhalai Districts including National Highway 8 & 208 on 11th & 12th February 2025 from 08.00 AM to 08.30 PM. The drive test covered drive route of 328 KMs (approx) over a period of two days. Approximately 214+ calls were made for each of the 7 networks: three 2G networks, one 3G network and three 4G networks covering four TSPs.

Overview

Voice Summary

Data Summary

Overview

South Tripura is an administrative district in the state of Tripura in northeastern India. The district headquarters are located at Belonia. District has three sub divisions (Belonia, Sabroom and Santirbazar).

Gomati district is a district of Tripura, India. Udaipur is its headquarters.

Dhalai is an administrative district in the state of Tripura in India. The district headquarter is in Ambassa.

The test results obtained from these drive tests were utilized to assess the network quality for Voice and Data services in terms of:

Voice: Coverage, Quality, Call Setup Success Rate, Drop Call Rate and Block Call Rate.

Data: Download Throughputs and Upload Throughputs.

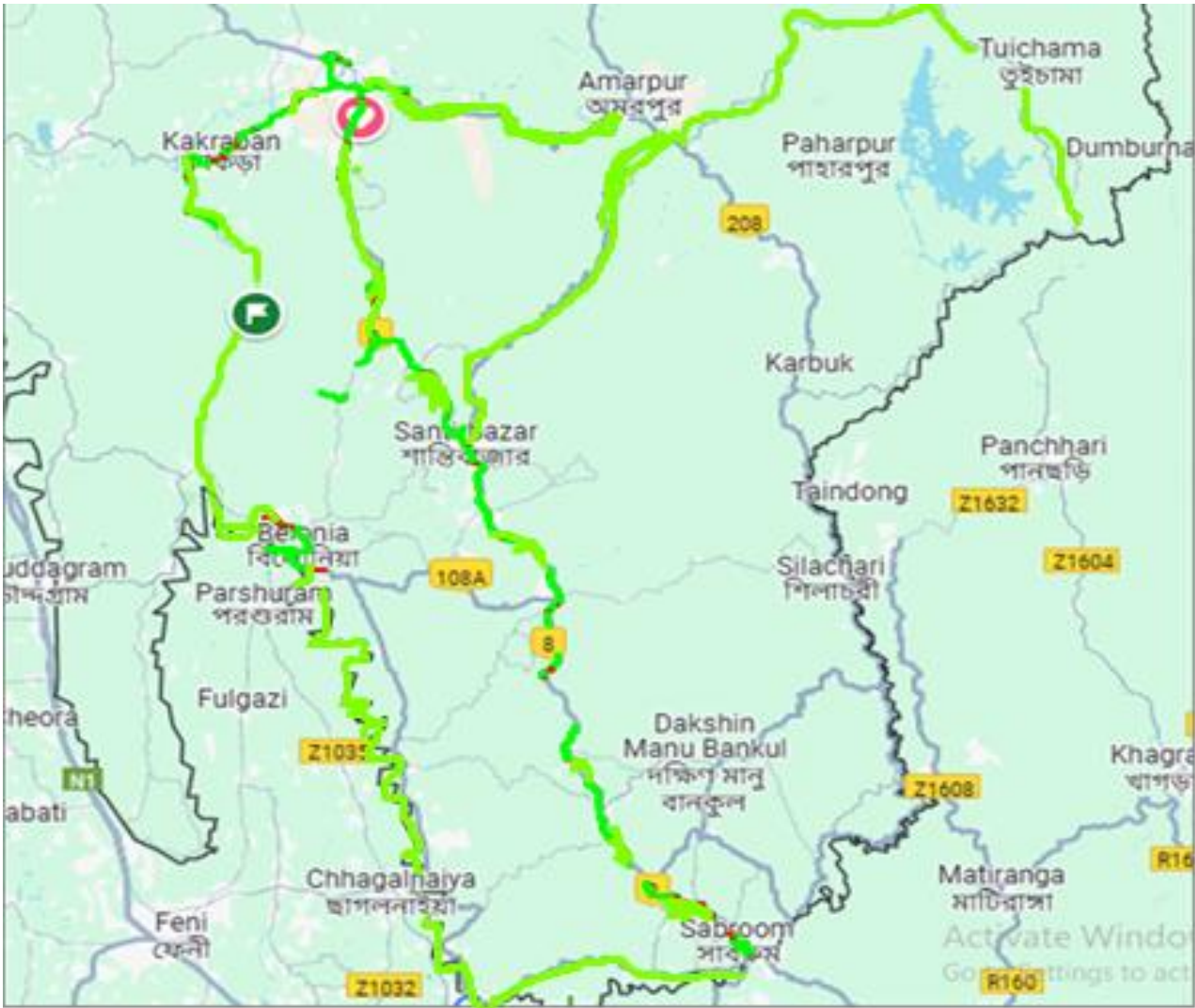
Voice Tests: Calls were made for 120 secs duration with wait time of 15 secs between call in 2G/ 3G on auto mode and 4G/ 5G on auto mode. Three 2G networks, one 3G network, Three 4G networks covering 4 unique TSPs were tested.

Data Tests: Dynamic Data Service Testing was performed along same route in 3G/4G/ 5G on auto mode. 250 MB file were downloaded and 125 MB file were uploaded from FTTP server in TSP's own server. Static Data Service Testing was also performed in 3G/ 4G / 5G on auto mode covering 4 unique TSPs were tested.

| Service | Static Data Service Testing- Specifications |
|----------------|---------------------------------------------------------------------------|
| Download | 250 MB in 3G/ 4G / 5G on auto mode |
| Upload | 125 MB in 3G/ 4G / 5G on auto mode |
| Web Browsing | 3 links of e/m commerce website www.amazon.in, www.flipkart.com and PayTm |
| Video Steaming | 100 Sec Video & 125 sec Timeout |
| Latency | 512 Bytes packet-- 1000 count on TSP own server using Ping. |

| Technology/ TSP | AIRTEL | BSNL | RJIO | VODAFONE-IDEA |
|-----------------|--------|------|-------|---------------|
| 2G | YES | YES | NO | YES |
| 3G | NO | YES | NO | NO |
| 4G | YES | NO | YES | YES |
| TOOL USED | TEMS | TEMS | X-CAL | TEMS |

Voice & Dynamic Data Test Drive Route



Drive Routes: Tripura

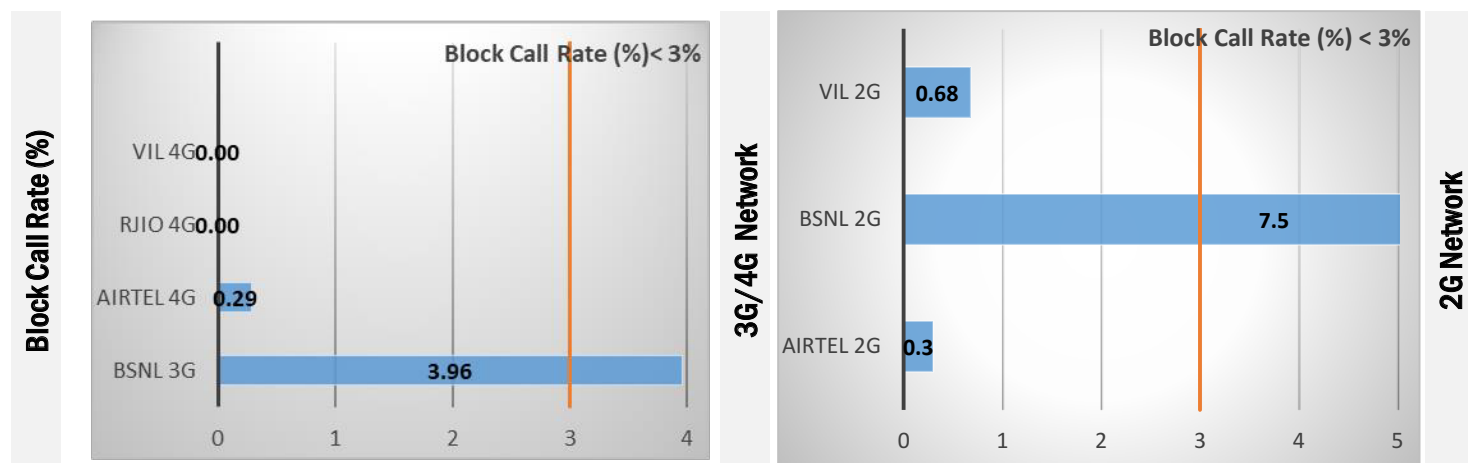
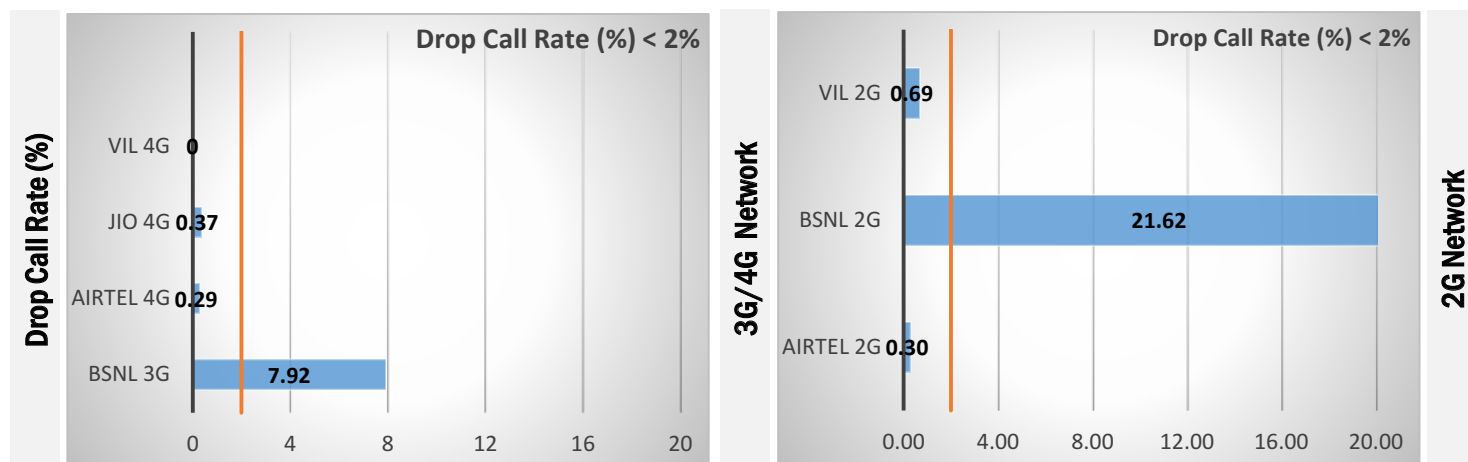
DAY-1–Udaipur Science Centre-Tripura Sundari Temple-Garjee Bazar Higher Secondary School-Santir Bazar District Hospital-Manubazar Post Office-Sabroom SDM Office-Indo Bangladesh Maitree Bridge-East Manughat High School-Poangbari R.D Block-D.M Office(South)-Barpathari Bazar-Jashmura High School-Tulamura Bazar-Ramesh Chowmuhan, Udaipur

DAY-2--Brahmapuri Bus Stop,Udaipur-Maharani Hospital-Gandhari Bazar-Muing Hathai Watch Tower-Gandachara Market-St. Arnold Higher Secondary School-Tui Chakma-Raishyabari RD Block Office
Amarpur Degree College-Industrial Training Institute-Santirbazar-Birchandra nagar market-Dhuptali

Data Service Test- Static Locations

| Static Locations |
|------------------------------|
| Udaipur Science Centre |
| Brahmapuri Bus Stop, Udaipur |

QoS compliance of the TSPs for Voice across technologies 2G/3G/4G-VoLTE:



| KPIs | 2G | | | 3G | 4G-VoLTE | | |
|-------------------|--------|-------|------|------|----------|------|------|
| | AIRTEL | BSNL | VIL | BSNL | AIRTEL | RJIO | VIL |
| Drop Call Rate % | 0.30 | 21.62 | 0.69 | 7.92 | 0.29 | 0.37 | 0.00 |
| Block Call Rate % | 0.30 | 7.50 | 0.68 | 3.96 | 0.29 | 0.00 | 0.00 |

a) All TSPs have met the 2% QoS benchmark of Drop Call Rate (DCR%) except BSNL(2G) & (3G) network.

b) All TSPs have met the 3% QoS benchmark of Block Call Rate (BCR%) except BSNL(2G) & (3G) network.

Coverage

a) Percentage of coverage samples for 2G ≥ -85 dBm.

| TSPs | 2G | | |
|------------|--------|-------|-------|
| | AIRTEL | BSNL | VIL |
| Coverage % | 56.17 | 48.63 | 85.00 |

b) Percentage of coverage samples for 3G ≥ -90 dBm & 4G ≥ -110 dBm.

| TSPs | 3G | 4G | | |
|----------|-------|--------|-------|-------|
| | BSNL | AIRTEL | RJIO | VIL |
| Coverage | 77.06 | 82.75 | 82.71 | 83.00 |

Summary

City Level Summary- Voice

| Voice Call | 2G | | |
|-----------------------|--------|--------|--------|
| | AIRTEL | BSNL | VIL |
| Call Attempt | 336.00 | 160.00 | 146.00 |
| Blocked Call Rate (%) | 0.30 | 7.50 | 0.68 |
| CSSR% (Accessibility) | 99.40 | 93.00 | 99.32 |
| Drop Call Rate (%) | 0.30 | 21.62 | 0.69 |
| Mobility HOSR (%) | 99.20 | 90.58 | 100.00 |
| Rx Quality (%) | 91.94 | 59.96 | 82.00 |

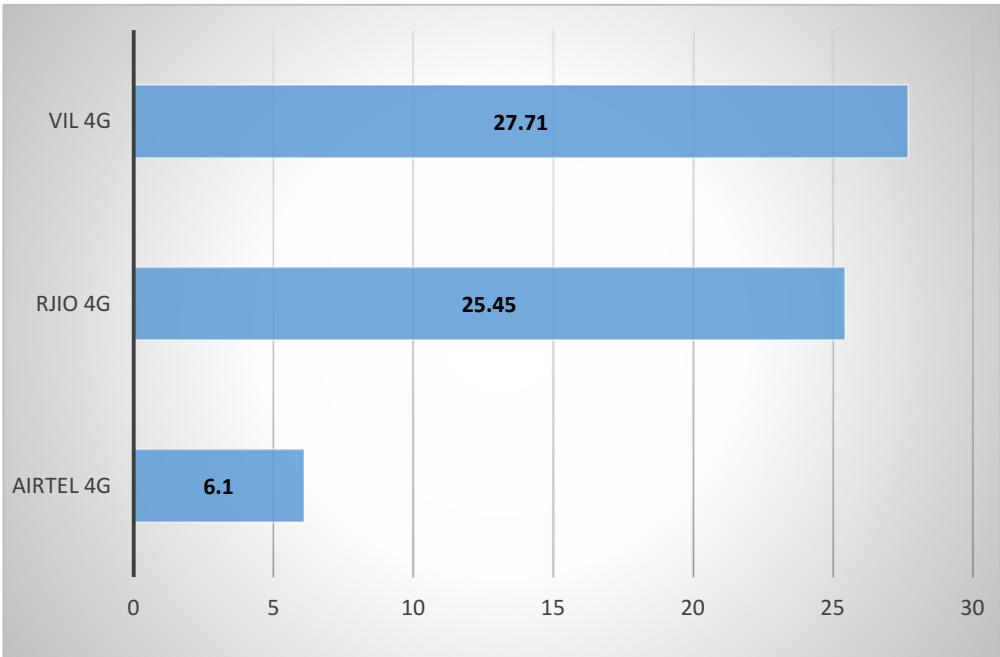
| Voice Call | 3G/4G | | | |
|-----------------------|---------|-----------|---------|--------|
| | BSNL 3G | AIRTEL 4G | RJIO 4G | VIL 4G |
| Call Attempt | 101.00 | 342.00 | 270.00 | 59.00 |
| Blocked Call Rate (%) | 3.96 | 0.29 | 0.00 | 0.00 |
| CSSR% (Accessibility) | 88.12 | 99.71 | 100.00 | 100.00 |
| Drop Call Rate (%) | 7.92 | 0.29 | 0.37 | 0.00 |
| Mobility HOSR (%) | 98.91 | 99.86 | 96.67 | 100.00 |
| Rx Quality (%) | 91.79 | 95.95 | 94.85 | 85.00 |

Dynamic Data was tested for 328 Kms. Download Throughput was tested.

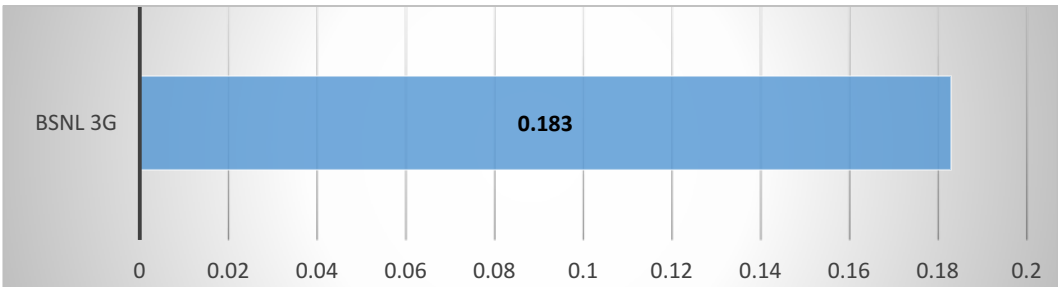
Data Download Performance (Average Throughput in Mbps) - Dynamic Data Testing

4G/3G Network:

4G-Dynamic Download Average Throughput (Mbps)



3G-Dynamic Download Average Throughput (Mbps)



Summary-Data Services Static

City Level Summary-

| Average Data Services Static | 3G/4G /5G | | | |
|------------------------------|-----------|-----------|---------|--------|
| | BSNL 3G | AIRTEL 4G | RJIO 5G | VIL 4G |
| Download throughput in Mbps | 0.84 | 60.07 | 323.53 | 18.1 |
| Upload Throughput in Mbps | 0.73 | 6.89 | 39.06 | 7.82 |
| Video streaming delay (secs) | 5.98 | 0.11 | 0.00 | 0.91 |
| Web Browsing Delay (secs) | 3.11 | 0.13 | 0.05 | 1.90 |
| Latency (msec) | 258.5 | 77.5 | *** | 63.5 |

*** Report not submitted

Summary-Data Services Static

Location Level Summary-

| Location:-Udaipur Science Centre | 3G/4G /5G | | | |
|----------------------------------|-----------|-----------|---------|--------|
| | BSNL 3G | AIRTEL 4G | RJIO 5G | VIL 4G |
| Download throughput in Mbps | 0.39 | 67.44 | 268.01 | 16.1 |
| Upload Throughput in Mbps | 0.07 | 7.98 | 18.64 | 6.98 |
| Video streaming delay (secs) | 6.12 | 0.12 | 0.00 | 0.84 |
| Web Browsing Delay (secs) | 3.25 | 0.13 | 0.06 | 1.83 |
| Latency (msec) | 312 | 73 | *** | 67 |

*** Report not submitted

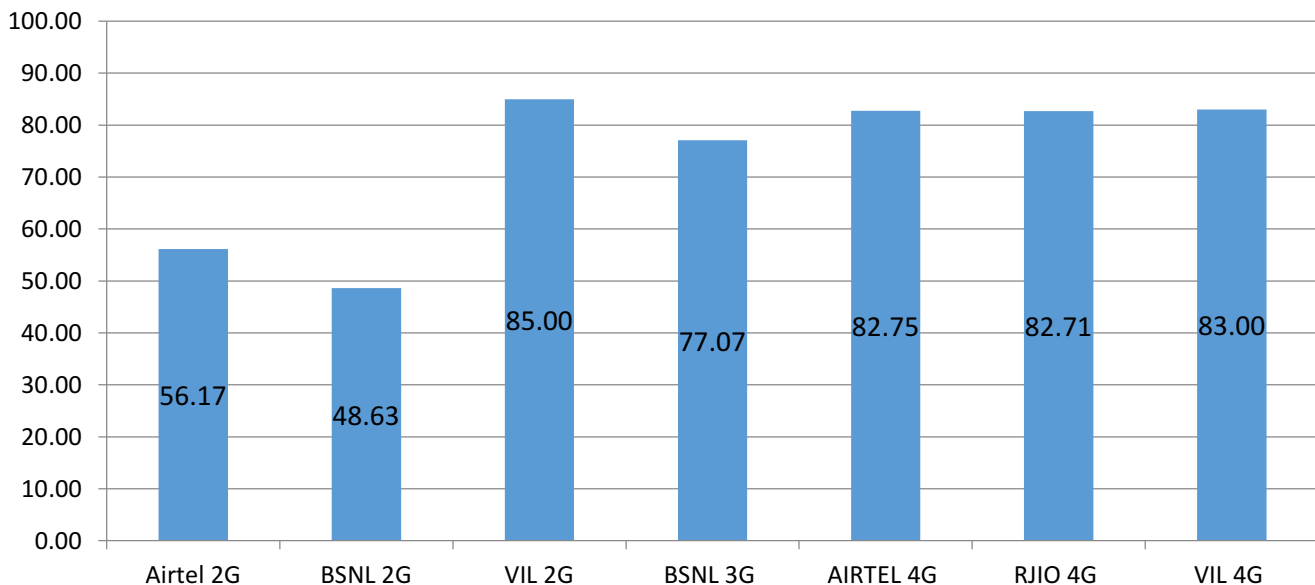
| Location:- Udaipur Brahamabari Bus Stop | 3G/4G /5G | | | |
|-----------------------------------------|-----------|-----------|---------|--------|
| | BSNL 3G | AIRTEL 4G | RJIO 5G | VIL 4G |
| Download throughput in (mbps) | 1.29 | 52.70 | 379.05 | 20.1 |
| Upload Throughput in (mbps) | 1.40 | 5.80 | 59.49 | 8.67 |
| Video streaming delay (secs) | 5.83 | 0.11 | 0 | 0.98 |
| Web Browsing Delay (secs) | 2.96 | 0.14 | 0.05 | 1.98 |
| Latency (msec) | 205 | 82 | *** | 60.0 |

I. Coverage Details

RF Coverage relates to the geographical footprint within the system that has sufficient RF signal strength to provide for a call session. The Coverage rate is calculated on the basis of % of samples in which the Rx level \geq -85 dBm, RSCP is \geq -90 dBm & RSRP \geq -110dBm. The details are as follows.

| TSP | Coverage Rate % |
|-----------|-----------------|
| AIRTEL 2G | 56.17 |
| BSNL 2G | 48.63 |
| VIL 2G | 85.00 |
| BSNL 3G | 77.07 |
| AIRTEL 4G | 82.75 |
| RJIO 4G | 82.71 |
| VIL 4G | 83.00 |

Coverage Rate %



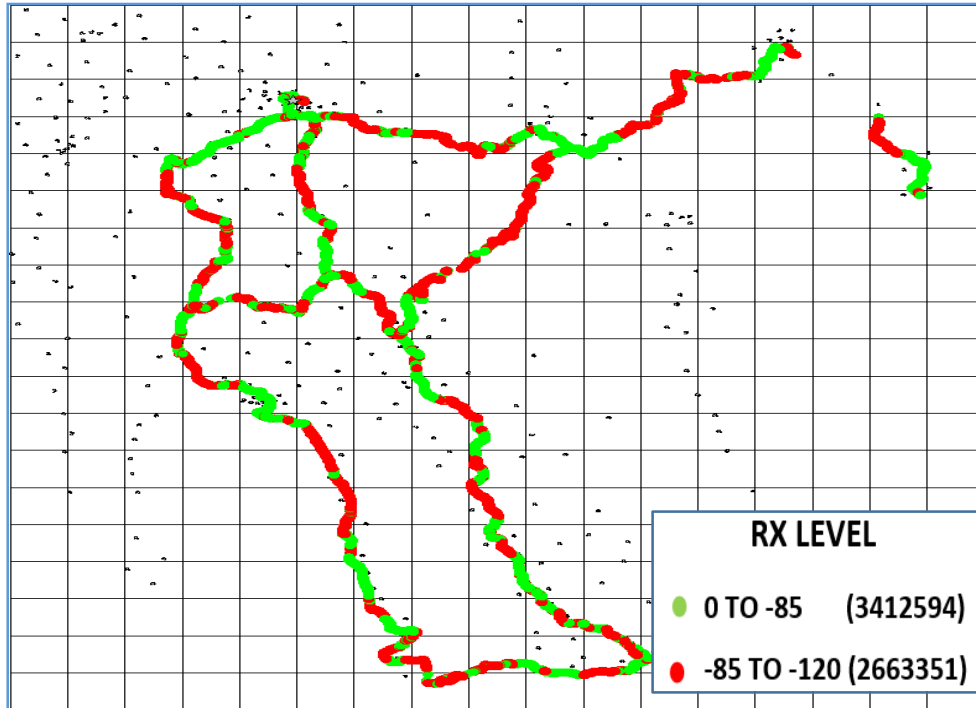
Note- Coverage is the percentage of samples having signal strength more than the threshold value (2G \geq -85 dbm, 3G \geq -90 dbm and 4G \geq -110 dbm). However, these samples are only for the portion of the OADT routes where TSPs have coverage i.e 'no coverage' routes have been excluded.

I. Coverage Details

AIRTEL

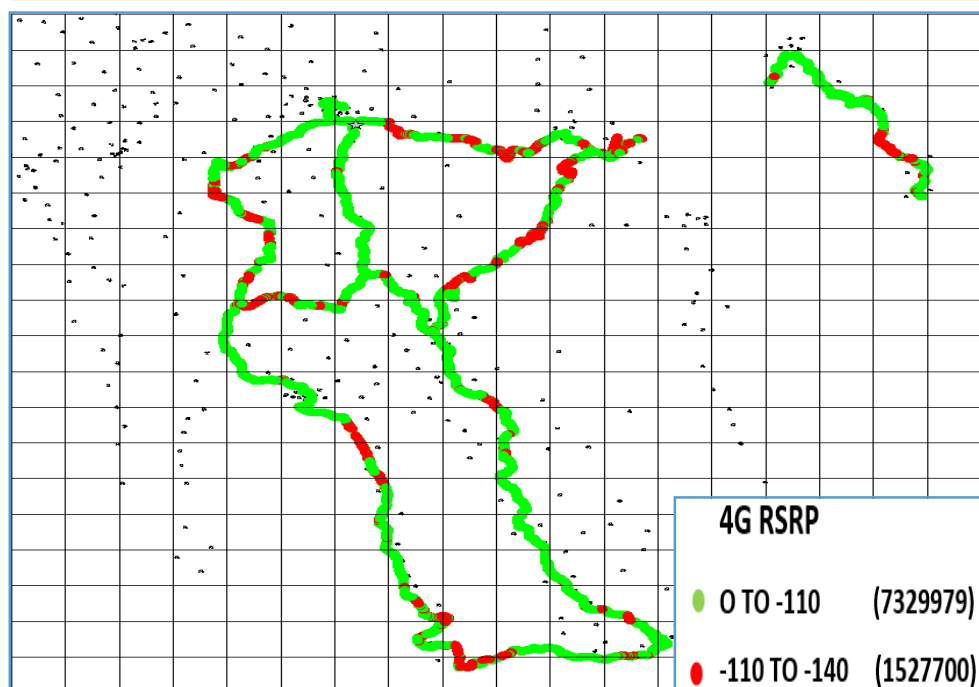
| Technology | Coverage Rate % |
|------------|-----------------|
| 2G | 56.17 |
| 4G | 82.75 |

2G



| Overall Rx Level | Sample % |
|------------------|------------|
| [Max >=-75] | 20.67 |
| [-75 >=-85) | 35.49 |
| [-85 >=-95) | 21.38 |
| [-95 >=Min) | 22.45 |
| Total | 100 |

4G



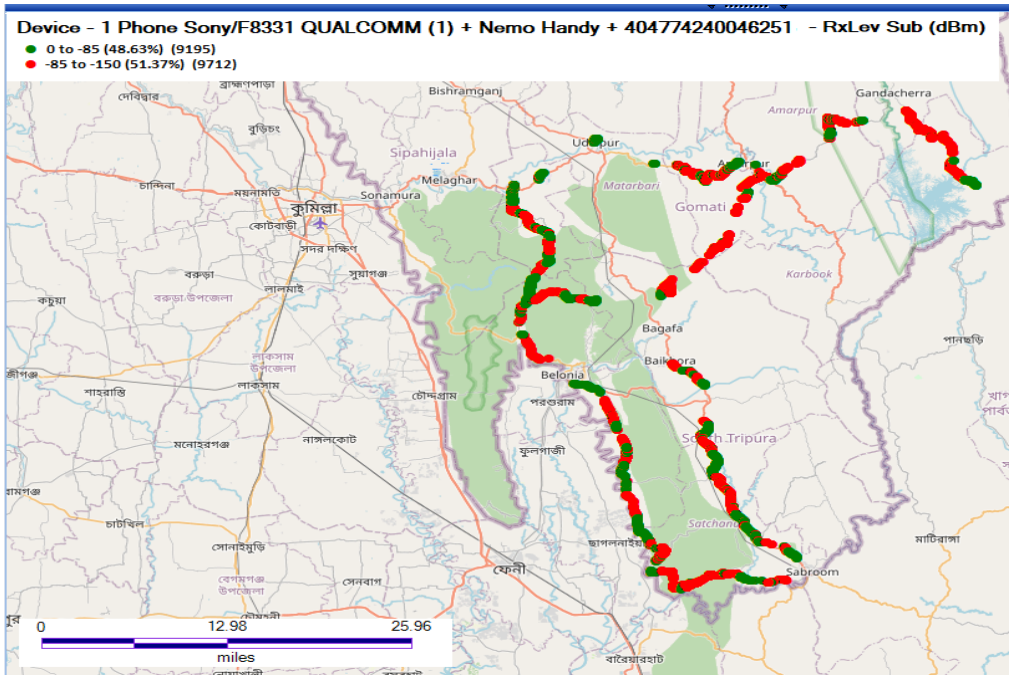
| Overall RSRP | Sample % |
|--------------|------------|
| [Max >=-80] | 8.87 |
| [-80 >=-90) | 26.83 |
| [-90 >=-110) | 47.06 |
| [-110 >=Min) | 17.24 |
| Total | 100 |

I. Coverage Details

BSNL

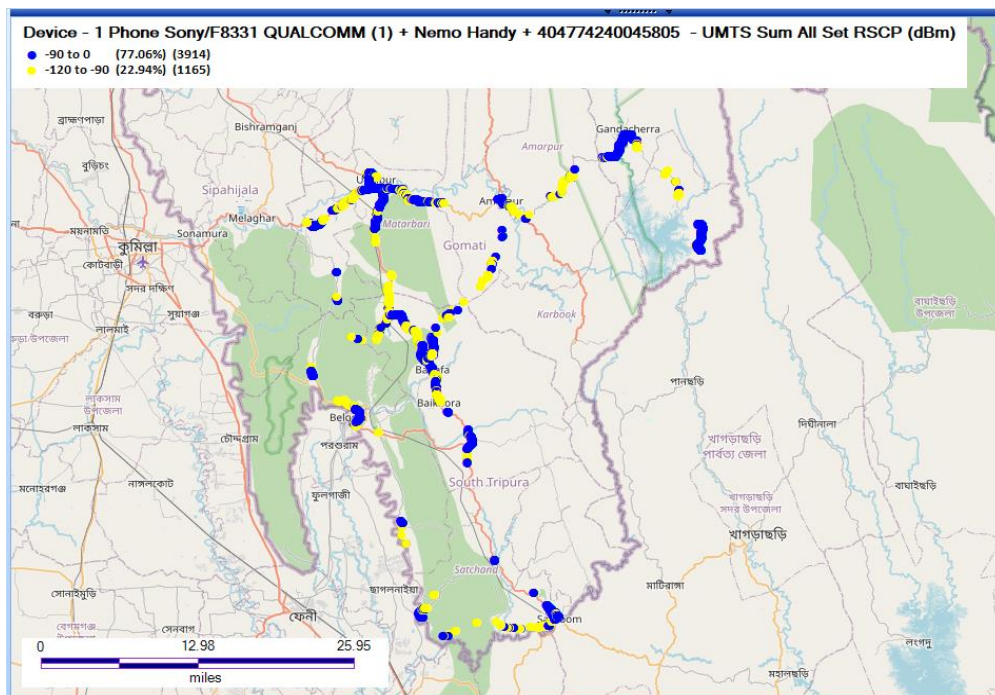
| Technology | Coverage Rate % |
|------------|-----------------|
| 2G | 48.63 |
| 3G | 77.07 |

2G



| Overall RxLevel | Sample % |
|-----------------|------------|
| [Max >=-75] | 20.55 |
| [-75 >=-85] | 28.08 |
| [-85 >=-95] | 37.27 |
| [-95 >=Min] | 14.10 |
| Total | 100 |

3G

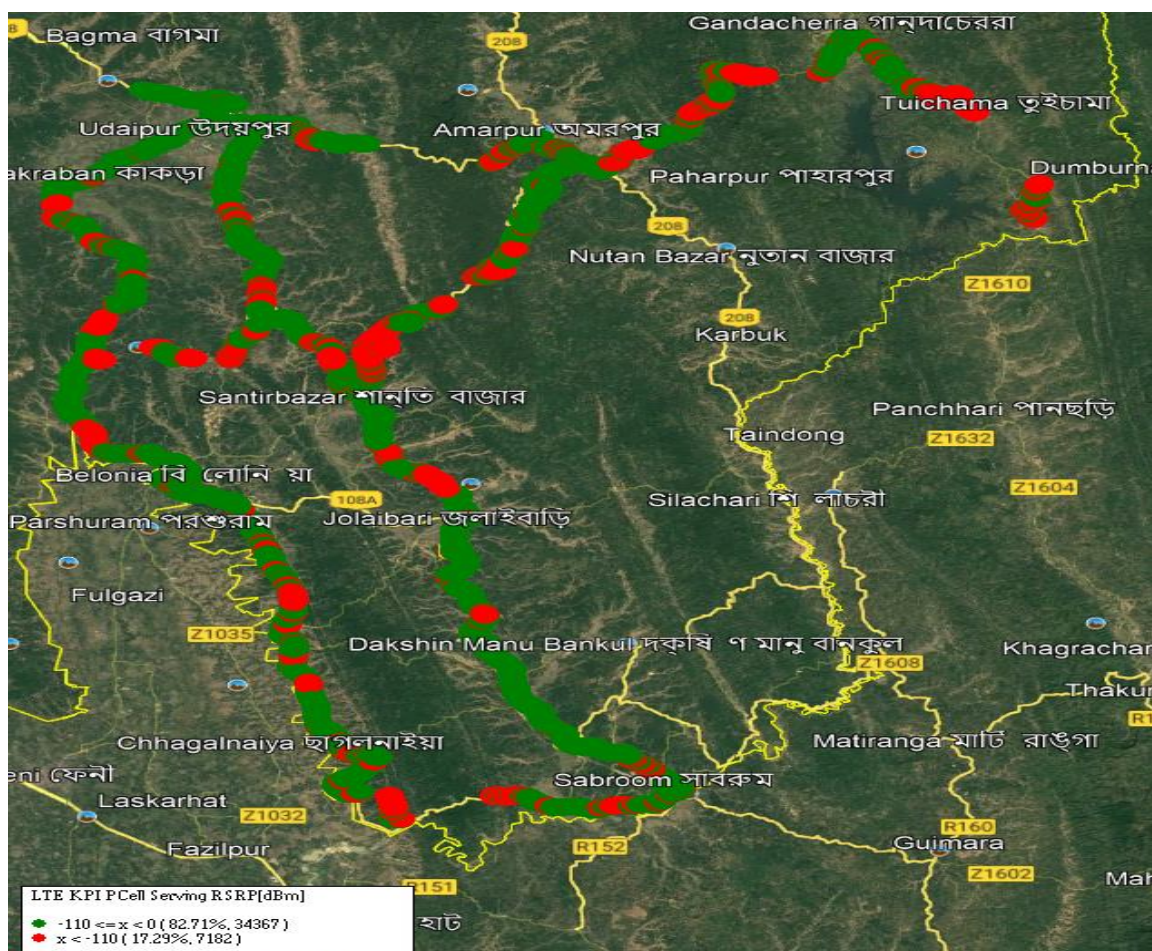


| Overall RSCP | Sample % |
|--------------|------------|
| [Max >=-70] | 57.12 |
| [-70 >=-80] | 7.90 |
| [-80 >=-90] | 12.05 |
| [-90 >=Min] | 22.93 |
| Total | 100 |

I. Coverage Details

RJIO

| Technology | Coverage Rate % |
|------------|-----------------|
| 4G | 82.71 |
| 4G | |



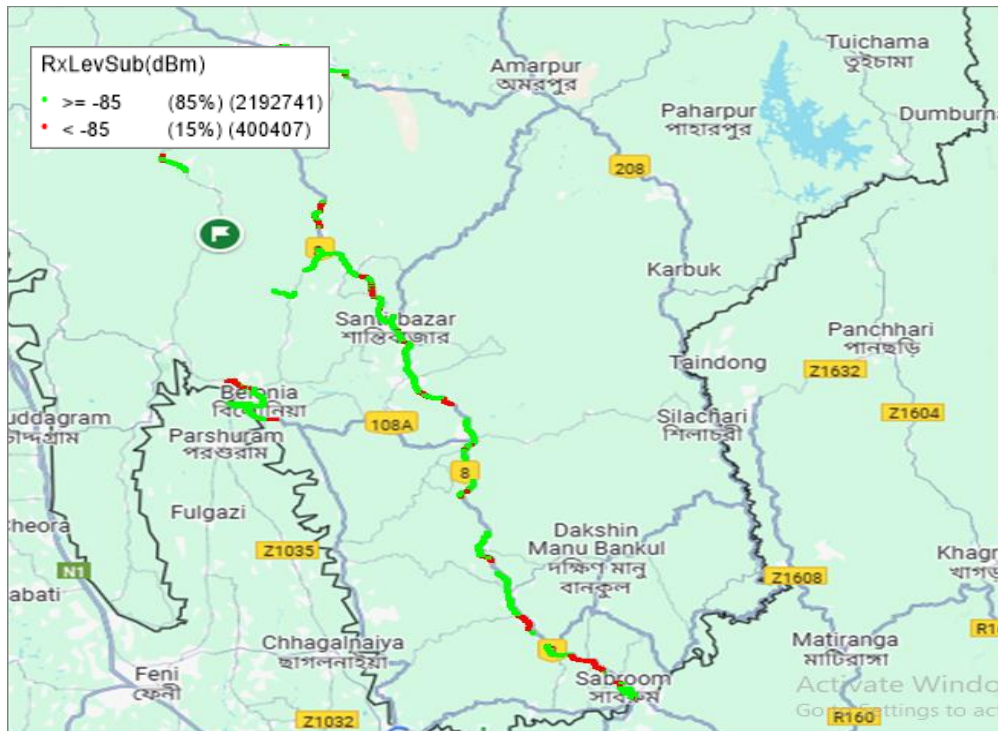
| Overall RSRP | Sample % |
|--------------|------------|
| [Max >=-80] | 16.50 |
| [-80 >=-90) | 15.72 |
| [-90 >=-110) | 50.50 |
| [-110 >=Min) | 17.28 |
| Total | 100 |

I. Coverage Details

VIL

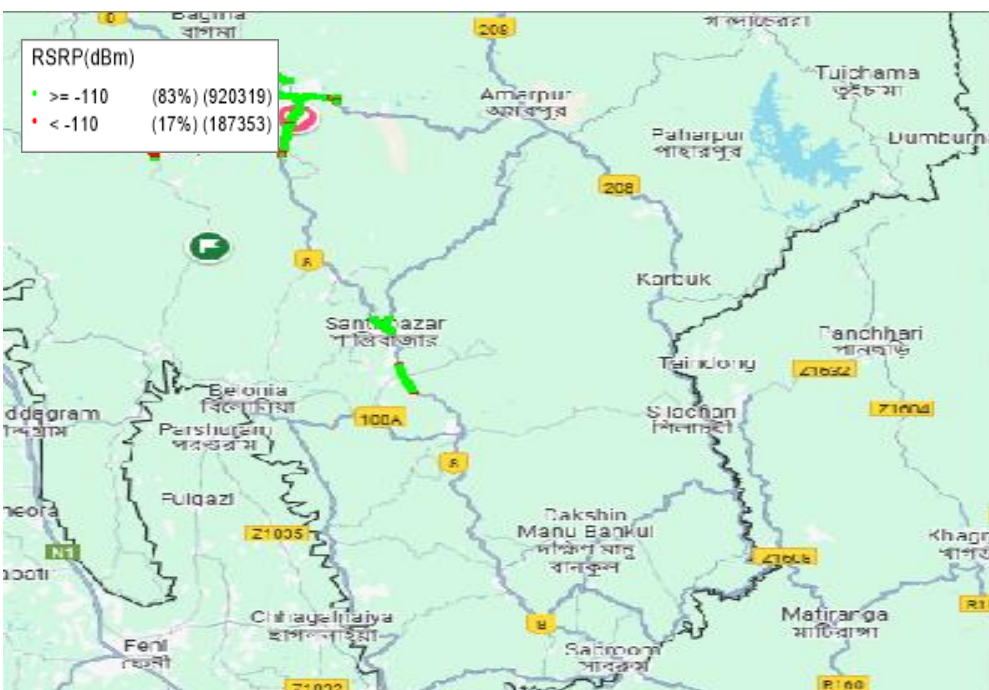
| Technology | Coverage Rate % |
|------------|-----------------|
| 2G | 85.00 |
| 4G | 83.00 |

2G



| Overall RxLevel | Sample % |
|-----------------|------------|
| [Max >=-75] | 54.00 |
| [-75 >=-85) | 31.00 |
| [-85 >=-95) | 9.00 |
| [-95 =Min) | 6.00 |
| Total | 100 |

4G

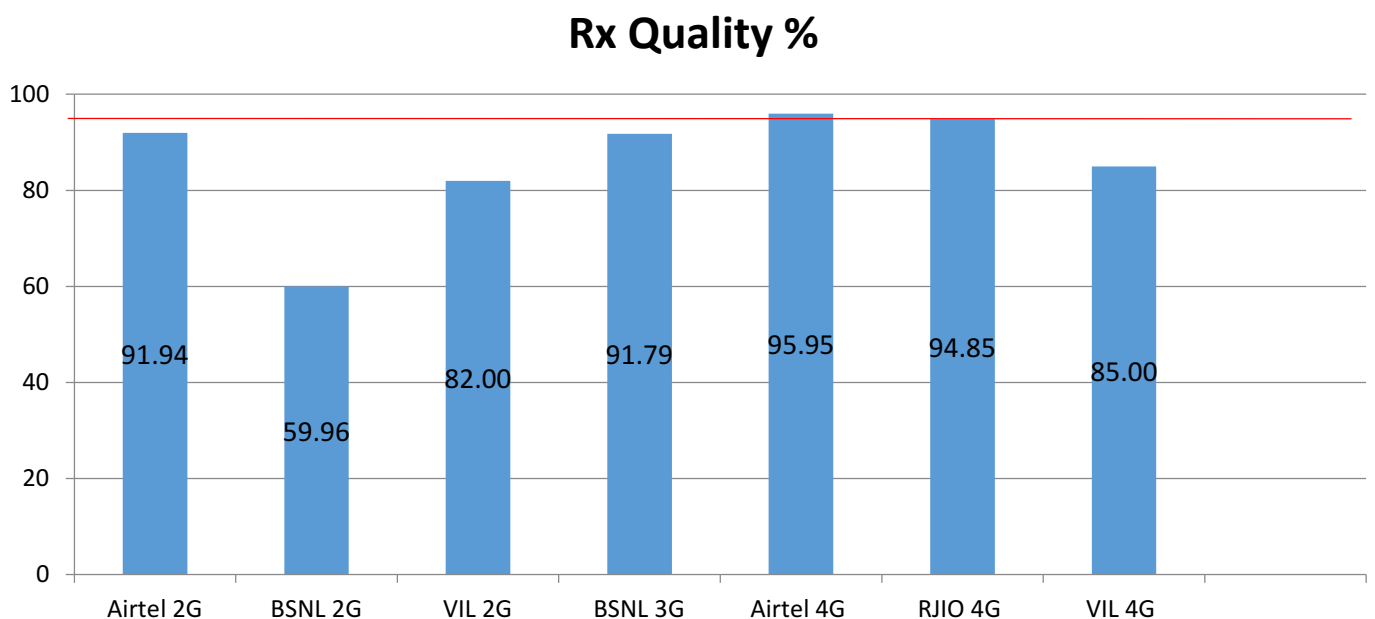


| Overall RSRP | Sample % |
|--------------|------------|
| [Max >=-80] | 33.00 |
| [-80 >=-90) | 31.00 |
| [-90>=-110) | 20.00 |
| [-110 >=Min) | 16.00 |
| Total | 100 |

II. Quality Details

For measuring voice quality, as per the QoS norms, Rx Quality \leq 5 for GSM, Ec/No \geq -14 dBm for 3G and SINR >0 in case of VoLTE is considered to be good, where as quality beyond this benchmark is considered to be bad. The benchmark should usually be $\geq 95\%$.

| TSP | Rx Quality % |
|-----------|--------------|
| AIRTEL 2G | 91.94 |
| BSNL 2G | 59.96 |
| VIL 2G | 82.00 |
| BSNL 3G | 91.79 |
| AIRTEL 4G | 95.95 |
| RJIO 4G | 94.85 |
| VIL 4G | 85.00 |

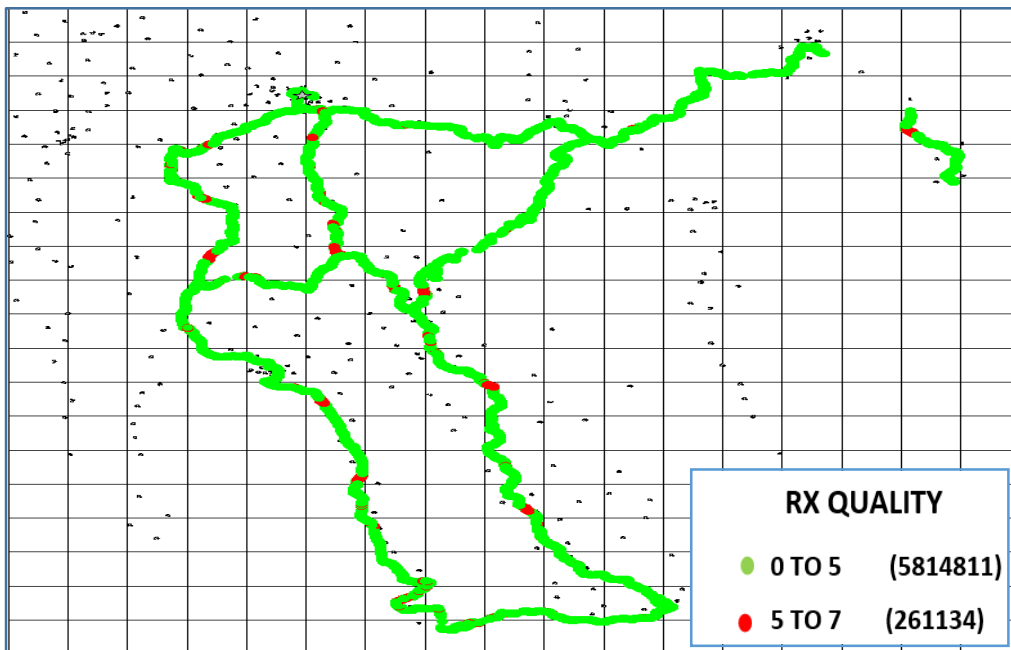


II. Quality Details

AIRTEL

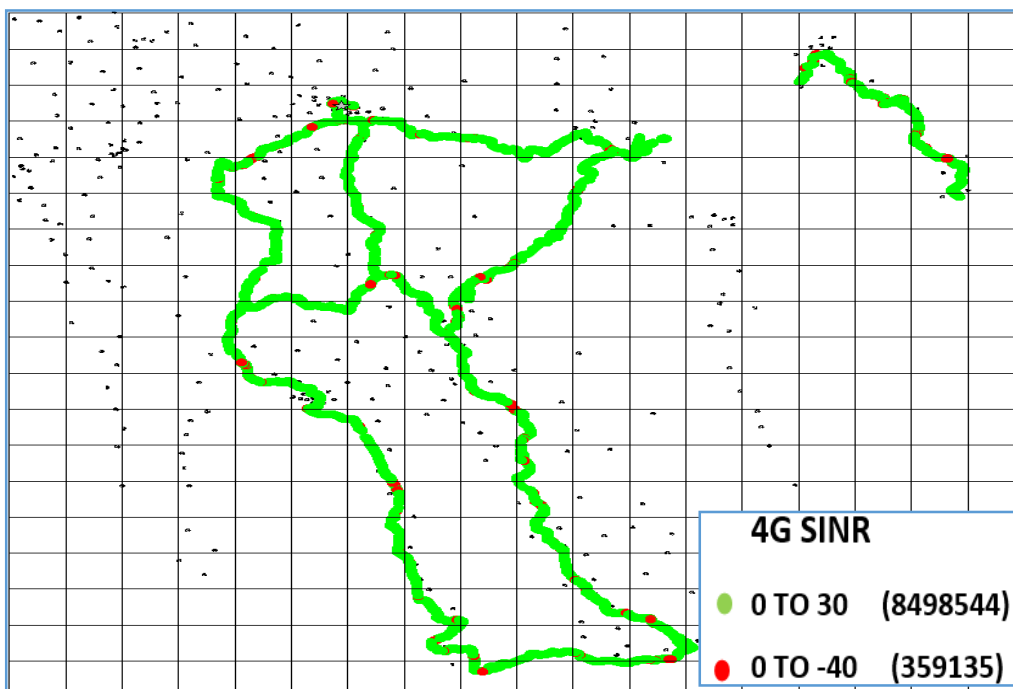
| Technology | Rx Quality % |
|------------|--------------|
| 2G | 91.94 |
| 4G | 95.95 |

2G



| Overall Rx Quality | Sample % |
|--------------------|------------|
| (Min <=2) | 86.79 |
| (2 <=3) | 1.68 |
| (3 <=4) | 3.47 |
| (4 <=5) | 3.76 |
| (5 <=Max) | 4.30 |
| Total | 100 |

4G



| Overall SINR | Sample % |
|--------------|------------|
| (Min <=0) | 4.05 |
| (0 <=5) | 16.03 |
| (5 <=10) | 22.17 |
| (10 <=15) | 23.64 |
| (15 <=Max) | 34.11 |
| Total | 100 |

II. Quality Details

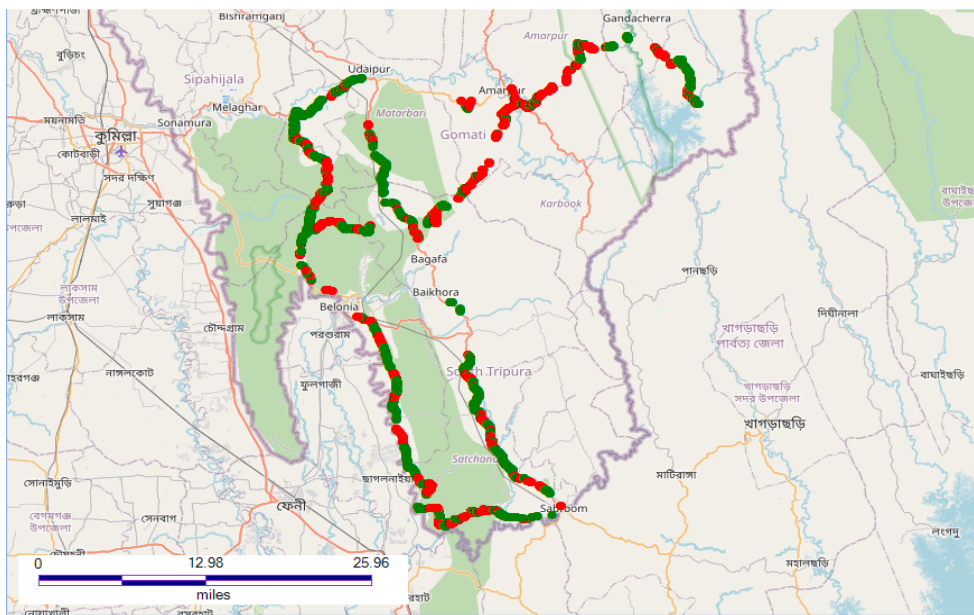
BSNL

| Technology | Rx Quality % |
|------------|--------------|
| 2G | 59.96 |
| 3G | 91.79 |

2G

Device - 1 Phone Sony/F8331 QUALCOMM (1) + Nemo Handy + 404774240046251 - RxQual Sub

● 4 to 10 (33.59%) (6350)
● 0 to 4 (66.41%) (12557)

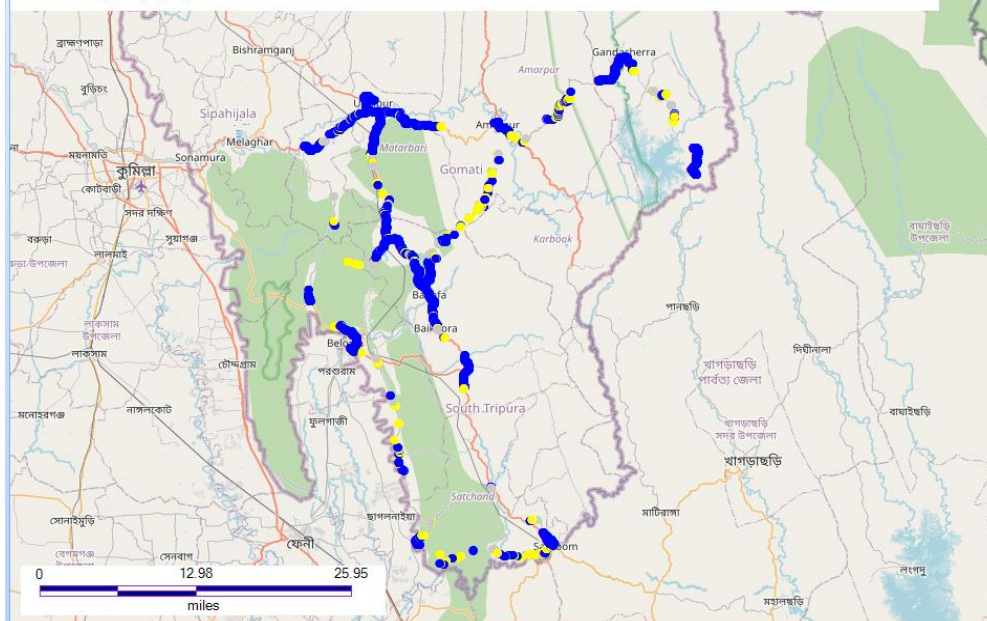


| Overall Rx Quality | Sample % |
|--------------------|------------|
| (Min <=2) | 51.5 |
| (2 <=3) | 8.46 |
| (3 <=4) | 6.45 |
| (4 <=5) | 4.56 |
| (5 <=Max) | 29.03 |
| Total | 100 |

3G

Device - 1 Phone Sony/F8331 QUALCOMM (1) + Nemo Handy + 404774240045805 - UMTS Sum All Set Ec/Io (dB)

● -14 to 0 (91.79%) (4662)
● -20 to -14 (8.21%) (417)

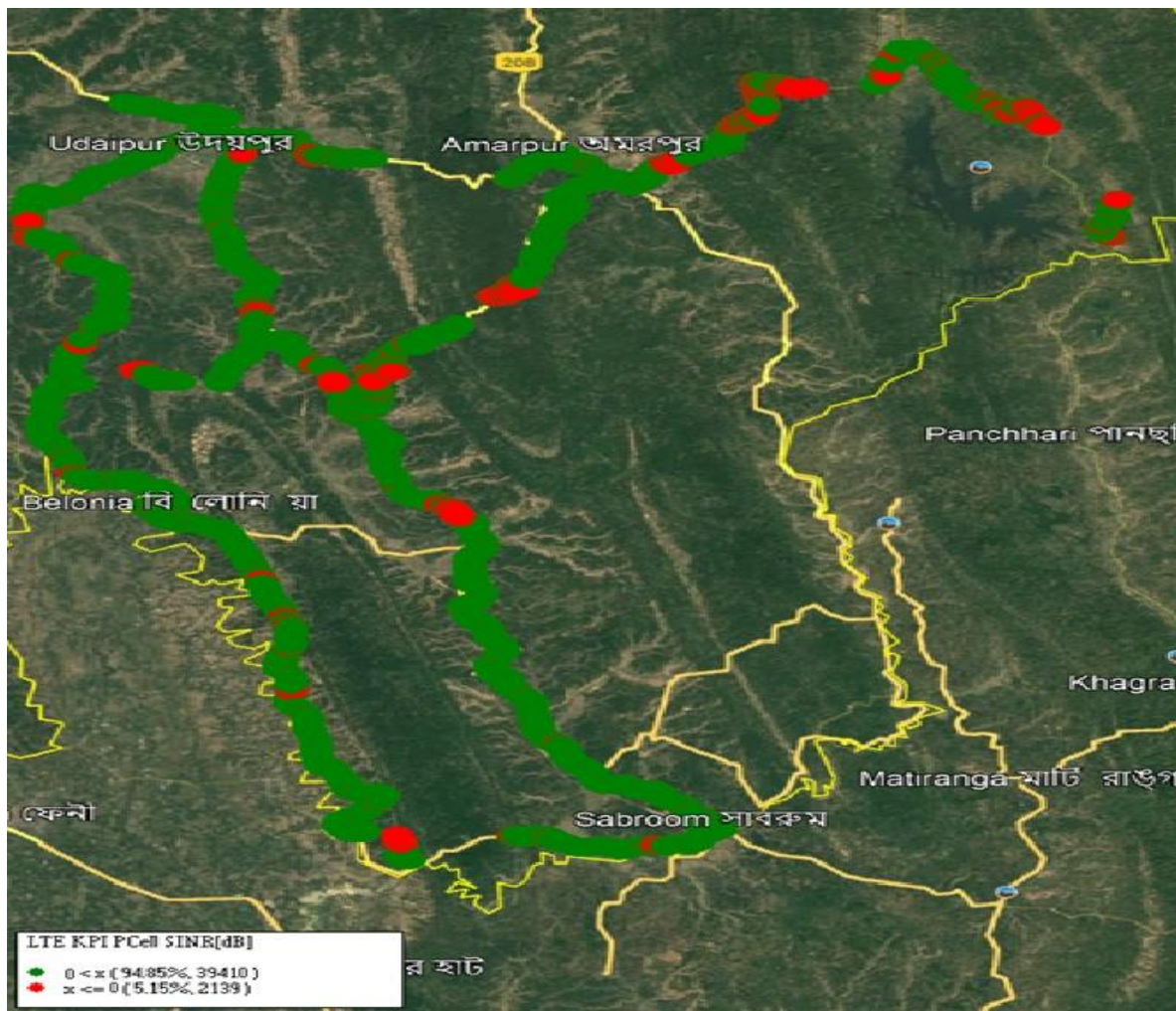


| Overall EcNo | Sample % |
|--------------|------------|
| (Max <=-6) | 11.7 |
| (-6 <=-9) | 60.13 |
| (-9 <=-11) | 8.31 |
| (-11 <=-14) | 11.65 |
| (-14 <= Min) | 8.21 |
| Total | 100 |

II. Quality Details

RJIO

| Technology | Rx Quality % |
|------------|--------------|
| 4G | 94.85 |
| 4G | |



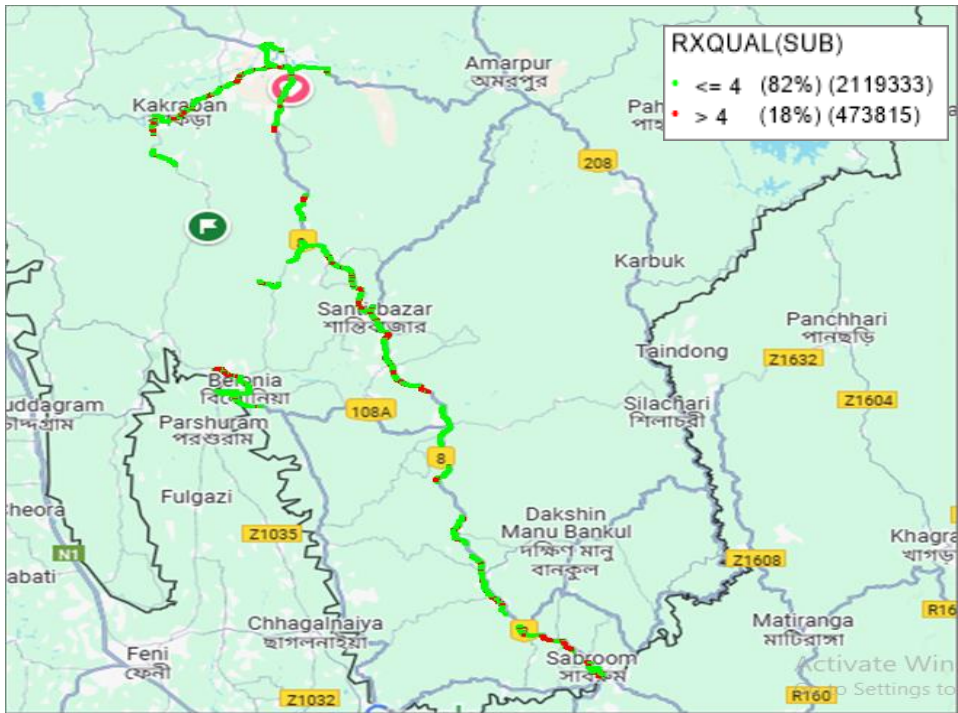
| Overall SINR | Sample % |
|--------------|------------|
| (Min <=0) | 5.15 |
| (0 <=5) | 26.80 |
| (5 <=10) | 24.52 |
| (10 <=15) | 20.70 |
| (15 <=Max) | 22.83 |
| Total | 100 |

II. Quality Details

VIL

| Technology | Rx Quality % |
|------------|--------------|
| 2G | 82.0 |
| 4G | 85.0 |

2G



| Overall Rx Quality | Sample % |
|--------------------|----------|
| (Min <=2) | 49 |
| (2 <=3) | 24 |
| (3 <=4) | 9 |
| (4 <=5) | 15 |
| (5 <=Max) | 3 |
| Total | 100 |

4G



| Overall SINR | Sample % |
|--------------|----------|
| (Min <=0) | 15 |
| (0 <=5) | 27 |
| (5 <=10) | 22 |
| (10 <=15) | 21 |
| (15 <=Max) | 15 |
| Total | 100 |

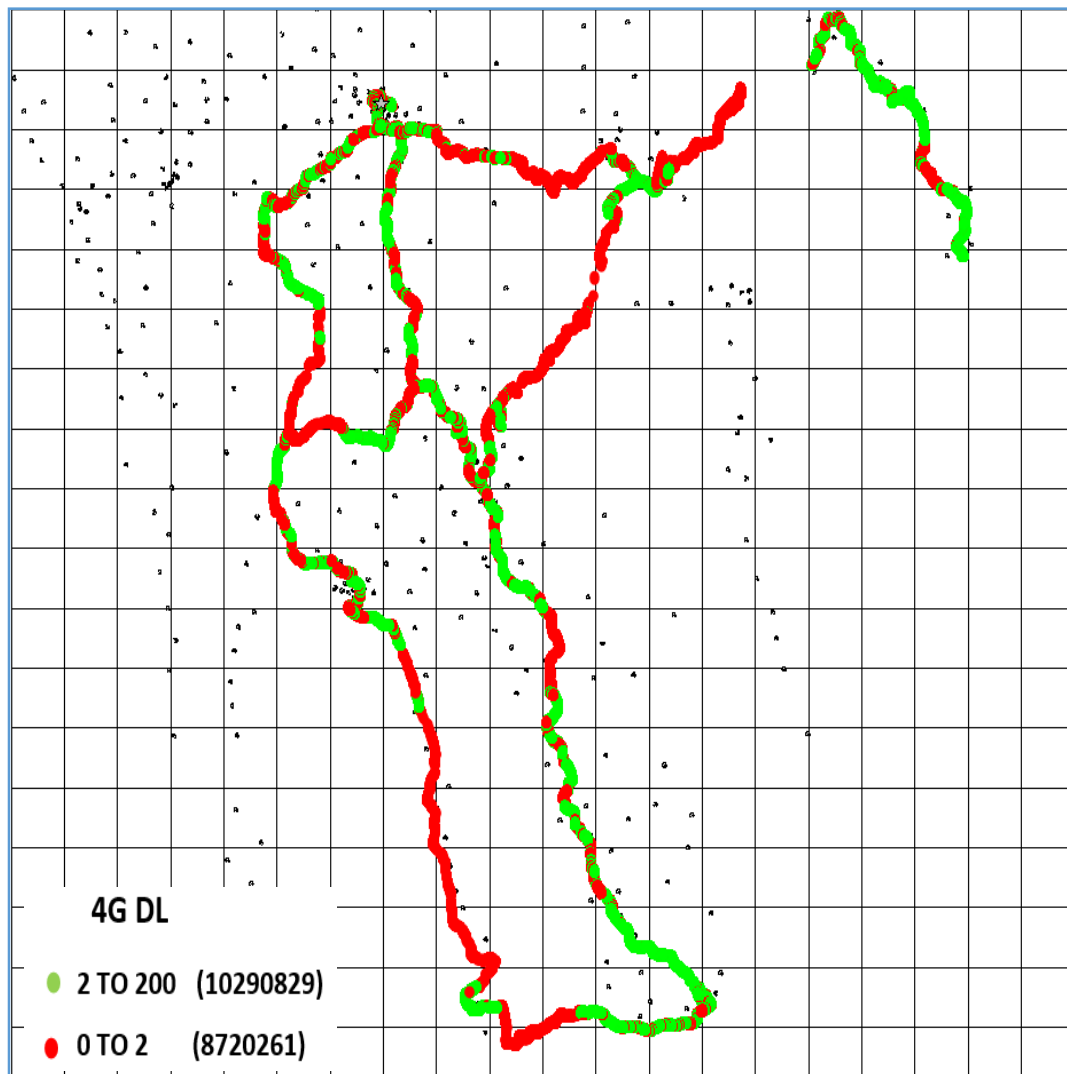
III. Dynamic Data Test- 4G DL Details

AIRTEL

Dynamic Data Testing Complete 328 Kms

| Data KPIs - Overall | 4G |
|------------------------------------|-----|
| Average Download Throughput (Mbps) | 6.1 |

4G



| AVG. DOWNLOAD SPEED (Kbps) | 6.1 |
|----------------------------|------------|
| DL throughput | Sample % |
| 0 to <2 Mbps | 45.87 |
| 2 to <10 Mbps | 34.21 |
| 10 to <=30 Mbps | 13.96 |
| >30 Mbps | 5.97 |
| Total | 100 |

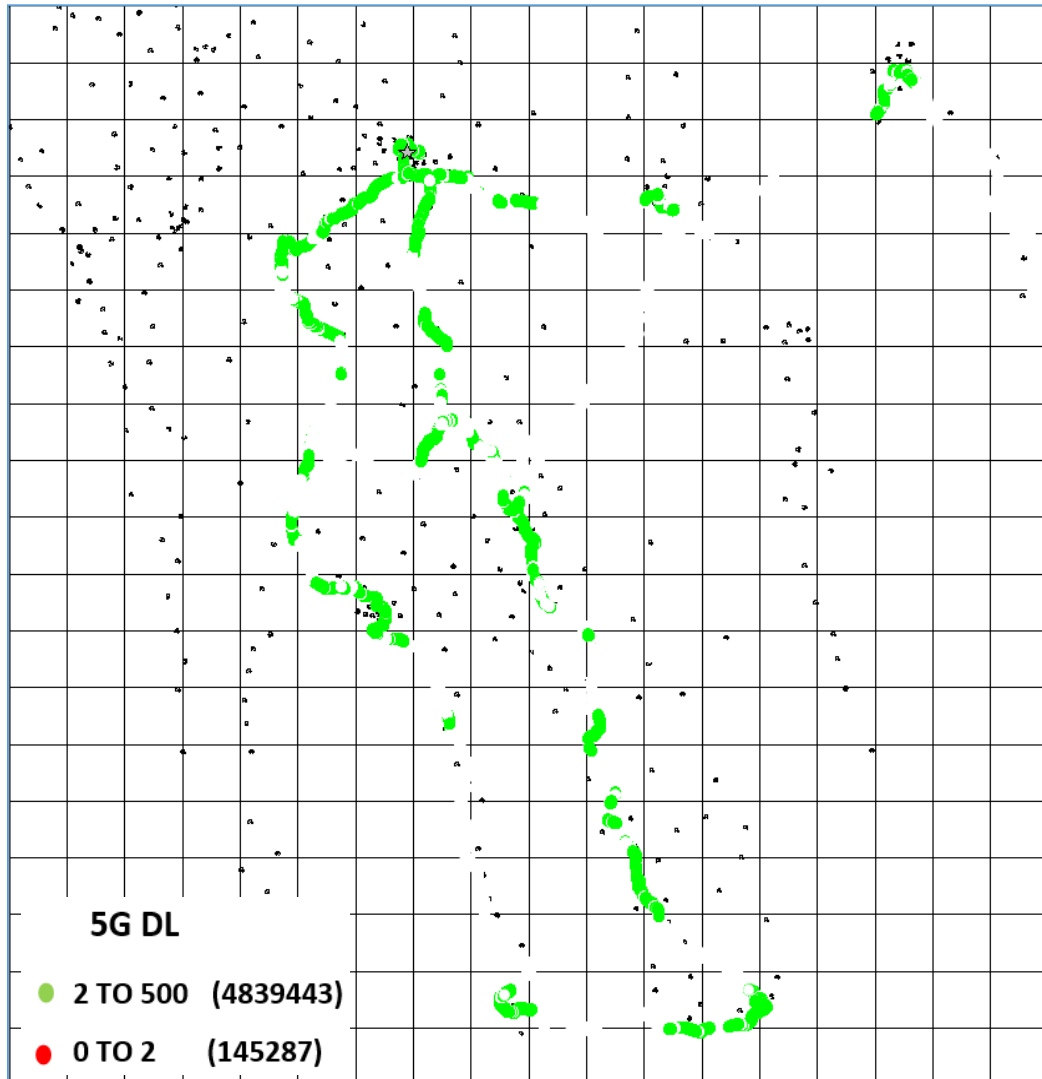
III. Dynamic Data Test- 5G DL Details

AIRTEL

Dynamic Data Testing Complete 328 Kms

| Data KPIs - Overall | 5G |
|------------------------------------|------|
| Average Download Throughput (Mbps) | 51.2 |

5G



| AVG. DOWNLOAD SPEED (Mbps) | 51.2 |
|----------------------------|------------|
| DL throughput | Sample % |
| 0 to <2 Mbps | 2.91 |
| 2 to <10 Mbps | 1.24 |
| 10 to <50 Mbps | 9.16 |
| > 50 Mbps | 86.68 |
| Total | 100 |

III. Dynamic Data Test- 3G DL Details

BSNL

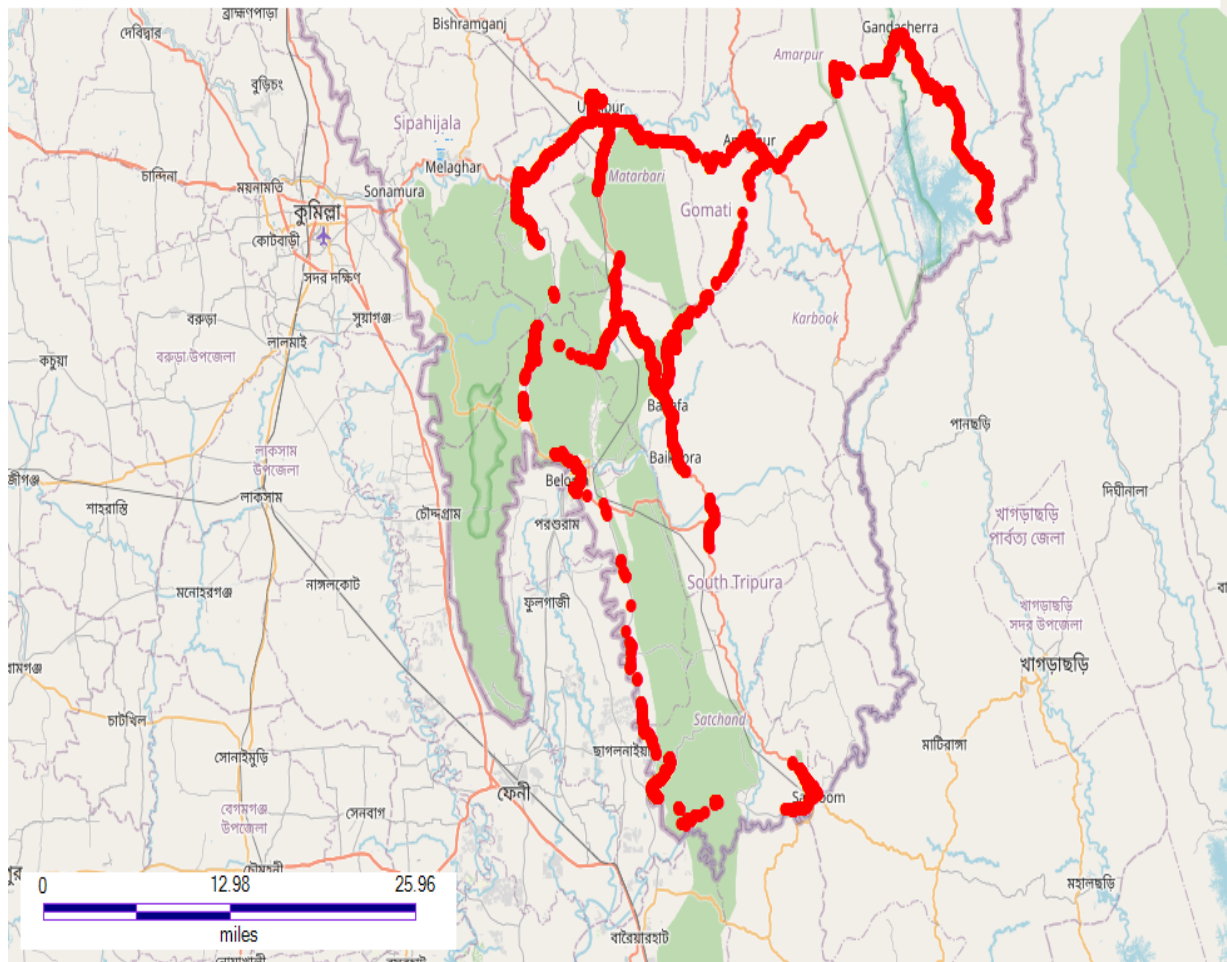
Dynamic Data Testing Complete 328 Kms

| Data KPIs - Overall | 3G |
|------------------------------------|------|
| Average Download Throughput (Mbps) | 0.18 |

3G

Device - 1 Phone Sony/F8331 QUALCOMM (1) + Nemo Handy + 404774240045805 - UMTS Downlink RLC Throughput (kbps)

- 2,048 to 10,240 (0%) (0)
- 0 to 2,048 (100%) (10689)



| AVG. DOWNLOAD SPEED (Mbps) | 0.18 |
|----------------------------|----------|
| DL throughput | Sample % |
| 0 to <2 Mbps | 100 |
| 2 to <=10 Mbps | 0 |
| >10 Mbps | 0 |
| Total | 100 |

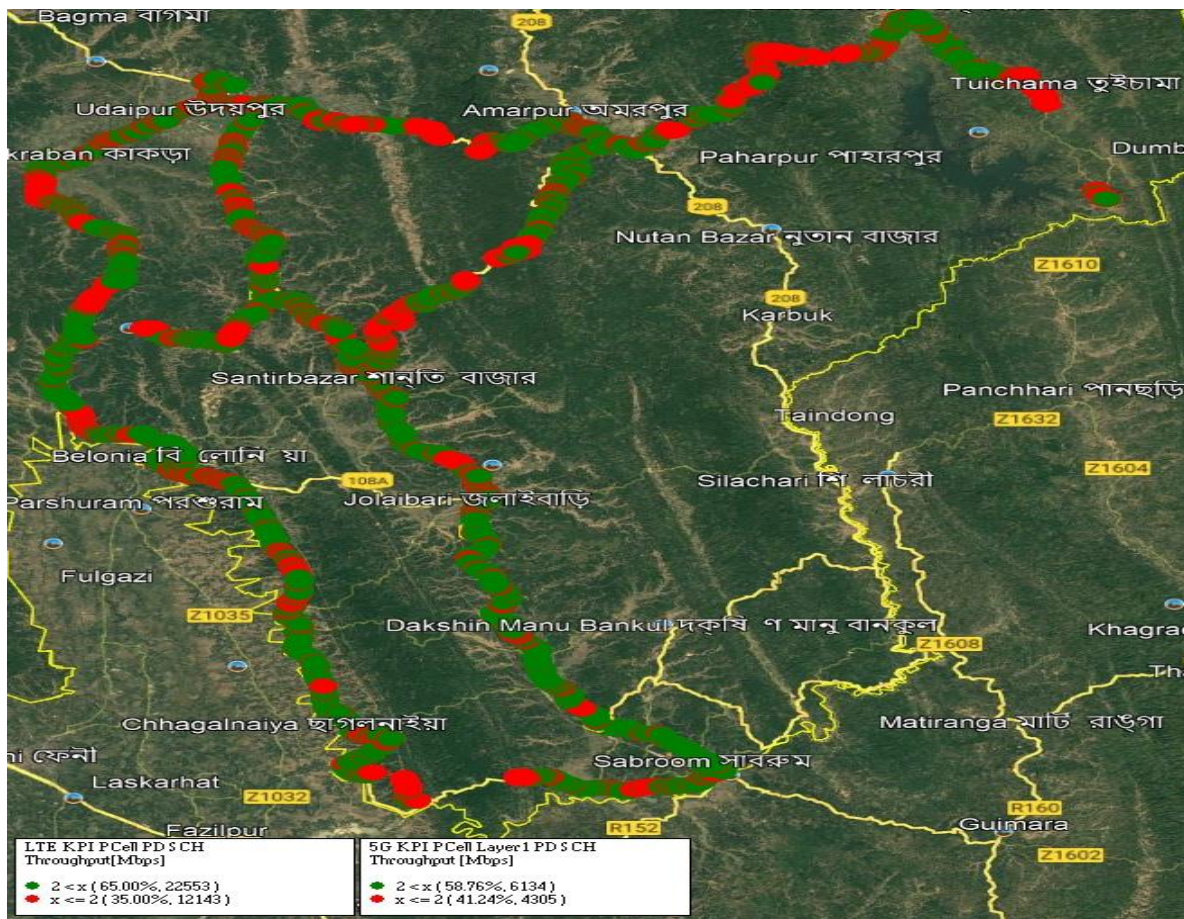
III. Dynamic Data Test- 4G/5G DL Details

RJIO

Dynamic Data Testing Complete 328 Kms

| Data KPIs - Overall | 4G/5G |
|------------------------------------|--------------|
| Average Download Throughput (Mbps) | 25.45/204.27 |

4G/5G



| AVG. DOWNLOAD SPEED (Mbps) 4G | 25.45 |
|-------------------------------|------------|
| DL throughput | Sample % |
| 0 to <2 Mbps | 34.99 |
| 2 to <10 Mbps | 35.80 |
| 10 to <=30 Mbps | 17.24 |
| >30 Mbps | 11.97 |
| Total | 100 |

| AVG. DOWNLOAD SPEED (Mbps) 5G | 204.27 |
|-------------------------------|------------|
| DL throughput | Sample % |
| 0 to <2 Mbps | 41.24 |
| 2 to <10 Mbps | 15.04 |
| 10 to <50 Mbps | 17.11 |
| > 50 Mbps | 26.61 |
| Total | 100 |

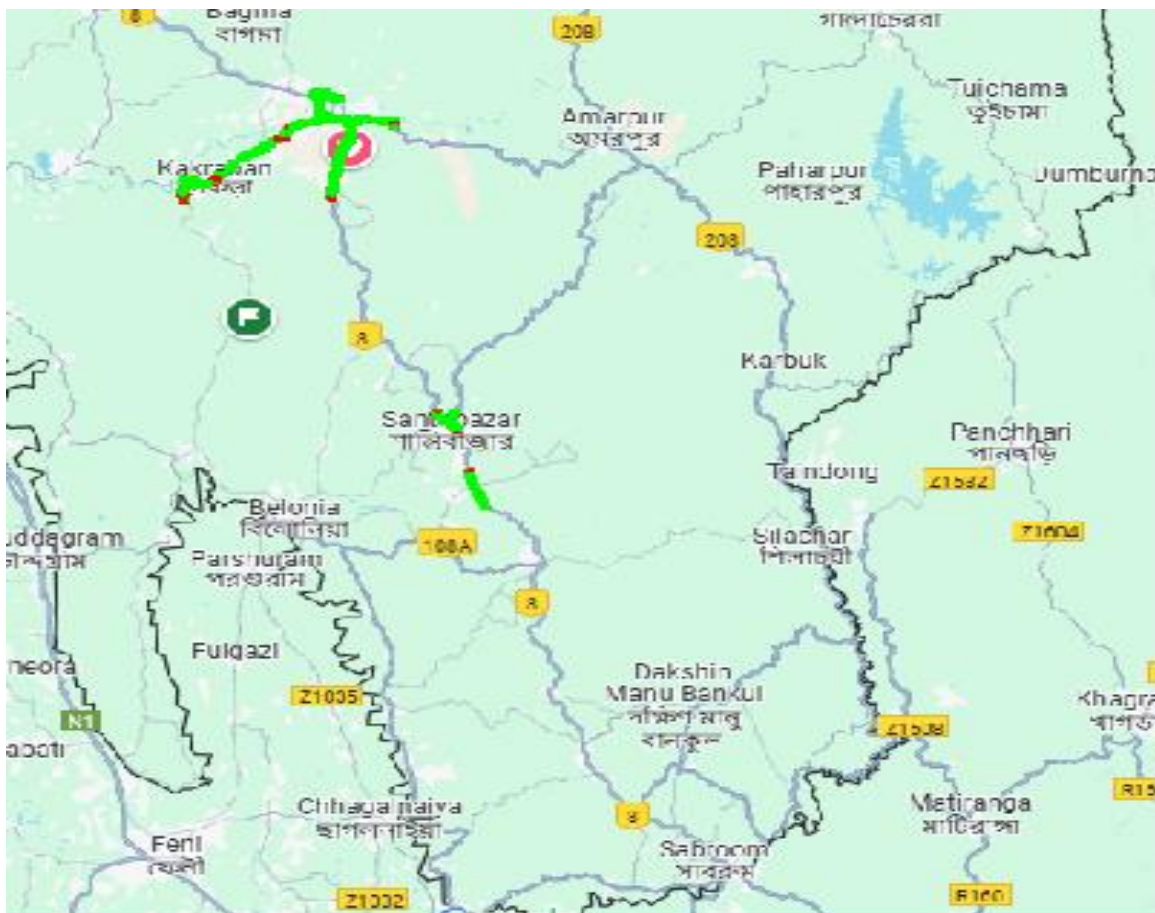
III. Dynamic Data Test-4G DL Details

VIL

Dynamic Data Testing Complete 328 Kms

| | |
|------------------------------------|-------|
| Data KPIs – Overall | 4G |
| Average Download Throughput (Mbps) | 27.71 |

4G



| | |
|----------------------------|----------|
| AVG. DOWNLOAD SPEED (Mbps) | 27.71 |
| DL throughput | Sample % |
| 0 to <2 Mbps | 12 |
| 2 to <10 Mbps | 31 |
| 10 to <=30 Mbps | 40 |
| >30 Mbps | 17 |
| Total | 100 |